

---

# RBM370 Rebate General Ledger Maintenance

---

*Overview*      This program is used to define or maintain General Ledger interface definitions for Rebates.

---

## Explanation

The Rebate General Ledger Definition defines the general ledger accounts to which the rebate accruals and actual rebate payments are posted.

The general ledger account for rebate expenses, provision, adjustment, advances and also lost or held rebate amounts can be defined. The various item levels, item classification, rebate groups, types branch etc.

As an example, the General Ledger accounts for rebate provision and expense can be different by division, where division is setup as on of the item levels.

This maintenance screen will also be used to define what 'item code' is in the credit note transaction generated if the rebate is paid in Accounts Receivable. The user can also define different item codes for the tax component.

### Distribution G/L Interface

#### 1 -Sales

DR      Debtor Control

CR      Sales

CR      Tax

### Rebate Accruals Posting To GL

#### 2 -Accrual

DR      Rebate Expenses

CR      Rebate Provision Account

The above entries will be posted to the GL monthly by taking the Accrual Option in the Rebate module. This data will be posted to the GL monthly by taking the Accrual Posting to G/L Menu Option in the Rebate module then select the Rebates Posting to G/L option (with a transaction type = 02).

#### G/L Interface Sales

##### 3 -Credit Note to Accounts Receivable module

DR     Rebate Provision  
  
DR     Tax Account  
  
CR     Debtors Control Account

The above entries will be created by the Rebate Payments Menu Option in the Rebate module and the Interface to G/L module using the G/L Interface option in the G/L module. The Definitions are defined in G/L Interface – sales.

##### 4 -Accounts Payable Rebate Cheque Payment

DR     Rebate Provision  
  
DR     Tax  
  
CR     Creditor Control Account

---

## Setup Requirements for Rebates

**TMSRB/RBO160-1** reflects when a credit note or A/P invoice is generated. This Control File is used to set definitions for the rebate interface with the distribution module. Definitions must be recognised by both modules for the interface to work.

**TMSRB/RBO160-2** defines the rebate payment type to be used to define which sort of payment to process in A/R so rebate payments are reflected in A/R reports.

**TMSAR/BK-PAYT** holds the rebate payment type which should be set up as well as **TMSRB/RBO160-2**.

**TMSGJ/JNLT** holds Journal types for rebates which should be set up here for Distribution Interface, A/P Credits and A/P Invoices.

**TMSAR/TR-DOCT** holds the Journal type 'H' which should be set up in this Control File.

**Note:** Rebates should be set up first in the G/L Interface Definition as it is an exception to the rule. All exceptions to the rule must be set up first.

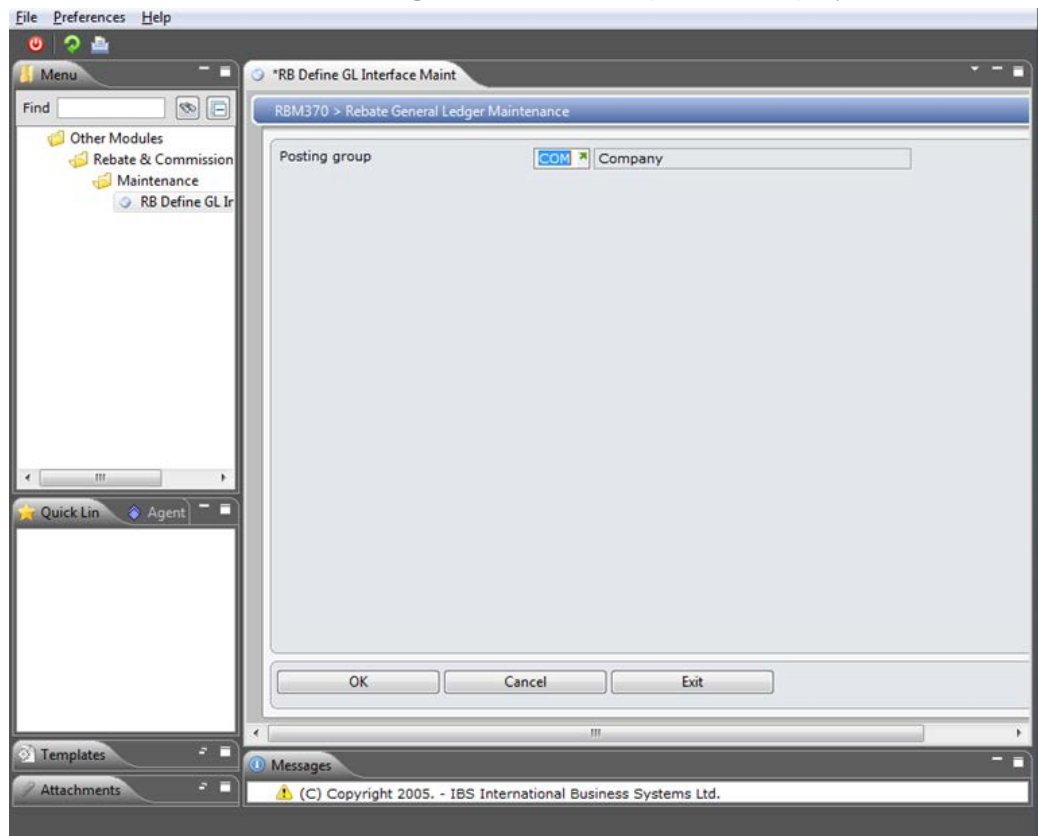
---

## Example 1: Add a Rebate GL Definition

This example describes how to add a rebate GL definition.

1. Select option **RB Define GL Interface Maint** from Other Modules> Rebate & Commissions>Maintenance menu.

**RBM370 Rebate General Ledger Maintenance** panel is displayed.

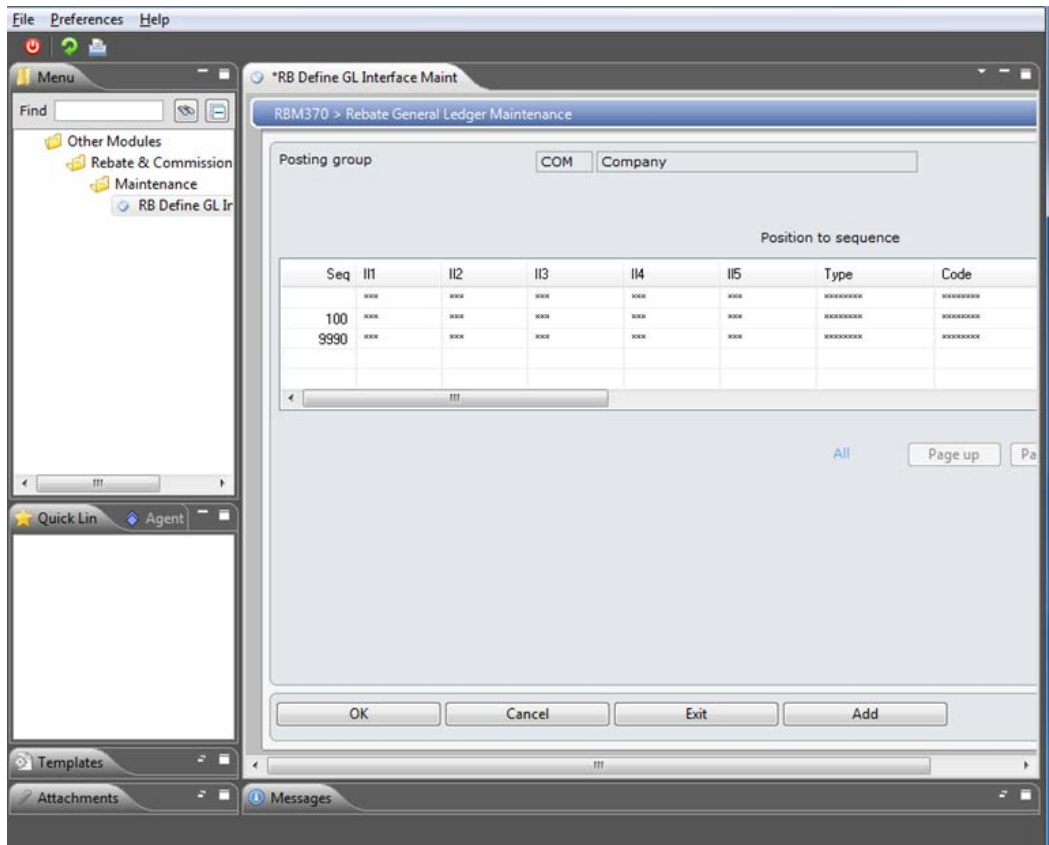


### Relevant Fields

**Posting group** Entry of a Posting Group is mandatory.

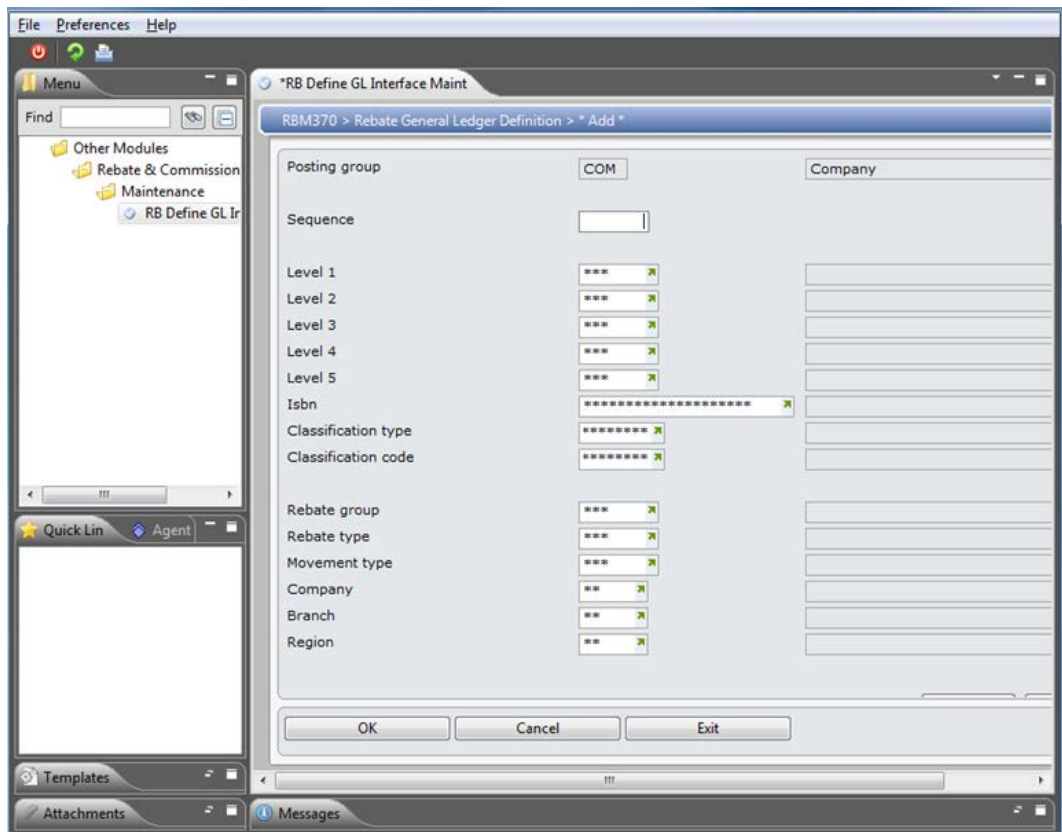
2. Key in the posting group and click **OK**.

**RBM370 Rebate General Ledger Maintenance** panel is displayed.



3. Click **Add** function.

**RBM370 Rebate General Ledger Definition** panel to define the GL definitions is displayed.



## Relevant fields

Level 1-5	<p>These Level codes form part of the Title classification hierarchy. This code is also referred to as the Title Class. There are 5 level hierarchy codes in the Title Masterfile but not all levels have to be used.</p> <p>Indicate which Level codes identify the products belonging to the client which are to be subjected to service charges. Asterisks (*) indicate all Level 1 codes are to be included.</p>
ISBN	<p>The number is alphanumeric and is a Product code or Item code or a Title or International Standard Book Number (ISBN) that uniquely identifies an inventory item in the system.</p>
Item classification type	<p>The Item classifications are user defined and therefore are unlimited.</p> <ol style="list-style-type: none"><li>1. Remember to add the IC-XXX to TMSDS/IC-TYPES to become active.</li><li>2. Add the IC-XXX to TMSDS/PSI-VAR</li><li>3. Add to the Screen Writer Header in Format A, B, C, or D</li></ol> <p>Example: @EDT: \IC-ED</p>
Item classification code	<p>Once a Classification Type has been selected, an individual code belonging to the Type is selected.</p>
Rebate group	<p>A Rebate Group is similar to a Buying Group. Buying Groups created for Rebates will probably be the same or similar to TMSDS/CC-BG, but do not have to be.</p> <p>These codes are for descriptive and selection purposes within the rebate system when reporting or processing rebate definitions. It is not necessary to add this class type to the Customer Masterfile or give customers a value for this Control File.</p>
Rebate type	<p>The Rebate Type and Rebate Groups form part of a hierarchy for classifying Rebate contracts. TMSRB/RB-TYPE is used to define the list of valid rebate types. Each entry will contain a 1-3 character rebate type and its corresponding description.</p> <p>The update sales history flag will determine if the accrual for the rebate type will be included when the rebate are updated in Sales History file. (SAHM00P).</p> <p>The "ignore sales history" flag will determine if tax will be calculated when the rebate is paid. If this flag is set to Yes, the rebate can only be paid by cheque in A/P.</p>
Movement type	<p>Movement Type Definitions define a type of product movement (typically sales, but can be any transaction) which can be used in a rebate definition to accrue rebates.</p>
Company	<p>Rebate company</p>

Branch	Customer branch codes can be included in this definition.
Region	Region in which the company is located. TMSDS/CM-RGN

4. Key in required information and press **Page Down**.

#### Relevant Fields

Sales rep	This is the sales representative (rep) servicing a particular customer or site. A record of sales per rep is kept by the system for reporting.
Major store	A Major Store is a store which is part of a chain of stores, for example Kmart, Myers, etc. and is one of the optional selection criteria.
Discount class	This is the item discount classification code.
Price code	This field determines which price list orders and other transactions are charged at.
Customer	This alphanumeric account number uniquely identifies a customer to the Distribution System. The sequencing of the report can be done.
Customer class type	This is the customer classification type.
Customer class code	<p>Classification codes are a second level of classification types. Entry in this field depends on the selection made in the Classification Type field. In Quote Generation select to print outstanding orders/quotes for a particular customer classification.</p> <p>In Mass Order Entry customers belonging to a Classification code can be selected.</p> <p>In Work with Trading Partner the customer classification code applicable to the trading partner.</p> <p>Copy order forms can be printed for a more specific group of customers by selecting class codes, for a specific classification type, to either be included or excluded in the print run.</p> <p>TMSDS/CC-TYPE includes a flag to indicate multiple codes that are allowed for the classification type.</p>

**Note** The following fields must contain the relevant general ledger account code to be used.

- Advances
- Held

- Held (Overdue)
  - Lost (payment history)
  - Loan (return rate)
  - Adjustment
  - Rebate Expense
  - Rebate Provision
5. Key in required information and press **Page Down**.
  6. Enter the Rebate payment item, this is the item code that will be in the credit note transaction that gets generated for rebate payments via AR.
  7. You can define different item codes for the tax component if required.
  8. Click **OK** to confirm.