

XT UI v4.5.0 Release news

Contents

Introduction	2
Client	3
Support for Aperio view in Windows client	3
Font size adjustment	4
Theme menu images	5
XT Studio	6
Optional installation	6
Documentation	7
Miscellaneous	7

Introduction

XT UI v4.5 is a rather technical release. The system has been upgraded in order to use the latest technology. A lot of code has been refactored in order to fit and take advantage of the new technology.

Upgraded to:

1. Java, OpenJDK 13
2. Latest version of Eclipse
3. Tomcat 9
4. Internal XT Client browser changed to use Chromium platform
5. Latest Apache POI (Office integration)
6. Latest Jtopen (Java classes for IBMi access)

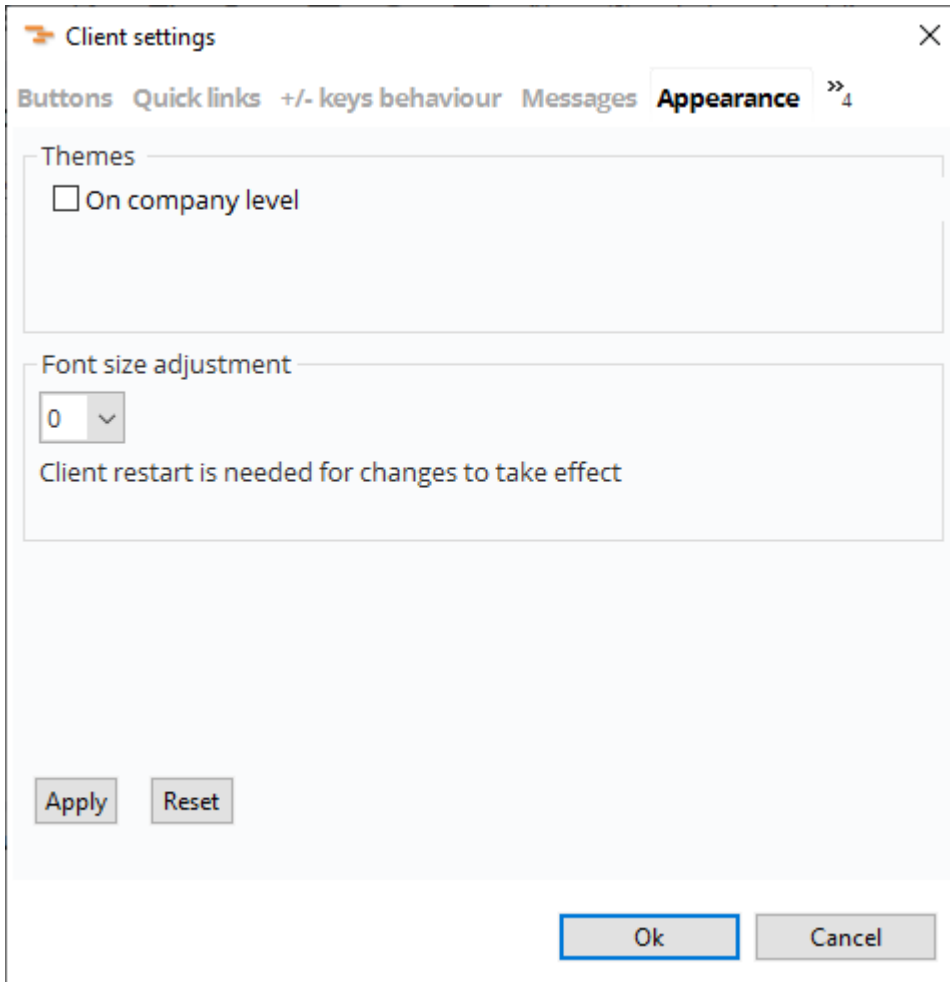
Client

Support for Aperio view in Windows client

The embedded browser in the XT Client has been changed from IE, which is very old, to Chromium. It is now possible to run Aperio view and web pages using modern technology in the Windows client. Earlier this only worked with the thin client.

Font size adjustment

Since XT UI v4.0 fonts have become a bit larger. A new setting, '**Font size adjustment**' has been added to the Client settings, '**Appearance**' page. If the larger font does not fit on the panels, you change adjust it here.

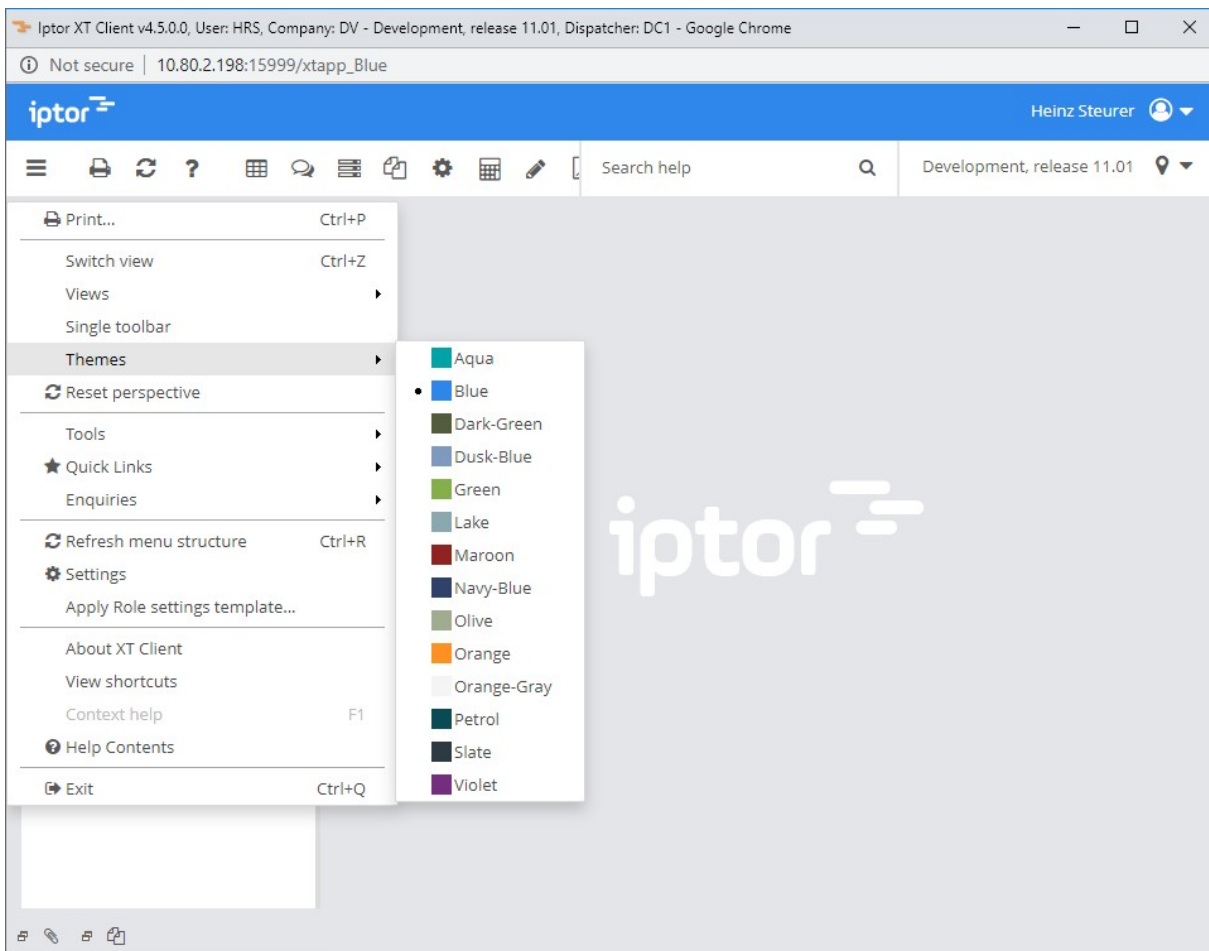


The image shows a 'Client settings' dialog box with a close button (X) in the top right corner. The 'Appearance' tab is selected, indicated by a double arrow and the number '4'. The 'Appearance' tab contains two sections: 'Themes' with a checkbox labeled 'On company level' which is currently unchecked, and 'Font size adjustment' with a dropdown menu showing '0'. Below the dropdown, a message states 'Client restart is needed for changes to take effect'. At the bottom of the dialog, there are four buttons: 'Apply', 'Reset', 'Ok', and 'Cancel'. The 'Ok' button is highlighted with a blue border.

This function is available for the Windows client only. It's not needed for the thin client because browsers have a build in zooming function. (Ctrl-Plus sign / Ctrl-Minus sign).

Theme menu images

Images in the actual theme colors have been added to the 'Themes' menu.



XT Studio

Optional installation

The installation of XT Studio is now optional.

Setup - Iptor XT Platform for MS Windows

Select Components
Which components should be installed?

Select the components you want to install; clear the components you do not want to install. Click Next when you are ready to continue.

Custom installation

New XT installation
 Upgrade XT installation
 Include XTStudio

Current selection requires at least 1,46 GB of disk space.

< Back Next > Cancel

Documentation

- XT UI Installation and Upgrade Guide (updated)
- XT UI Sizing Guide (updated)
- Display Setup for XT Windows Client (updated)
- XT UI Client Themes Guide (updated)

Miscellaneous

- Corrected JIRA issues