

# XT UI Printer Output Guide

## Contents

Introduction .....	2
Display printer output .....	2
Filter printer output .....	3
Export to PDF .....	4
Exporting to Excel .....	5
Security .....	7
Performance .....	8
Limitations .....	8

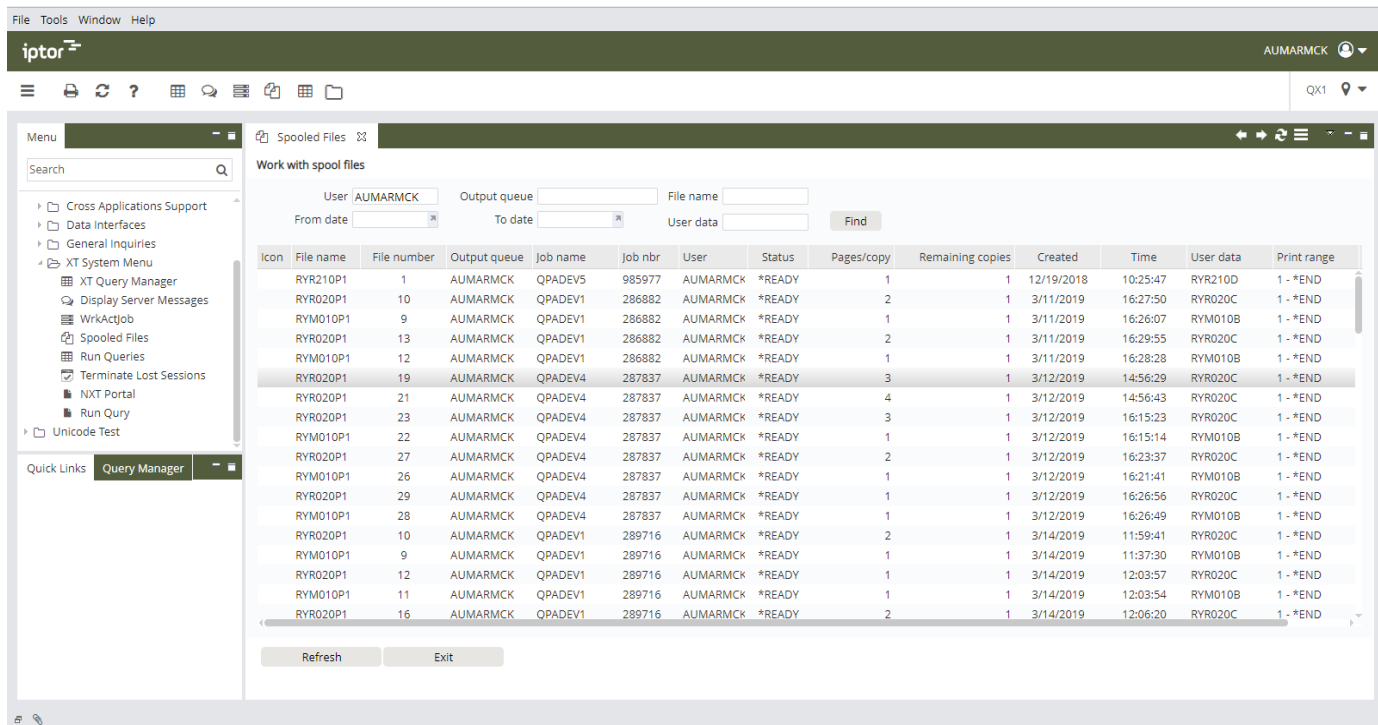
## Introduction

The 'Display printer output' can be used to work with the printer output of the backend application, e.g. IP1. The functionality is similar to 'Work with Spooled Files' on IBMi server.

## Display printer output



Click the icon on the toolbar, alternatively select 'Spooled Files' from the menu structure.



The screenshot shows the 'Spooled Files' window in the iptor application. The window title is 'Spooled Files' and the subtitle is 'Work with spool files'. The interface includes a search bar, a 'Find' button, and a table of spooled files. The table has the following columns: Icon, File name, File number, Output queue, Job name, Job nbr, User, Status, Pages/copy, Remaining copies, Created, Time, User data, and Print range. The table contains 20 rows of data, all with a status of '\*READY'.

Icon	File name	File number	Output queue	Job name	Job nbr	User	Status	Pages/copy	Remaining copies	Created	Time	User data	Print range
	RYR210P1	1	AUMARMCK	QPADEV5	985977	AUMARMCK	*READY	1	1	12/19/2018	10:25:47	RYR210D	1 - *END
	RYR020P1	10	AUMARMCK	QPADEV1	286882	AUMARMCK	*READY	2	1	3/11/2019	16:27:50	RYR020C	1 - *END
	RYM010P1	9	AUMARMCK	QPADEV1	286882	AUMARMCK	*READY	1	1	3/11/2019	16:26:07	RYM010B	1 - *END
	RYR020P1	13	AUMARMCK	QPADEV1	286882	AUMARMCK	*READY	2	1	3/11/2019	16:29:55	RYR020C	1 - *END
	RYM010P1	12	AUMARMCK	QPADEV1	286882	AUMARMCK	*READY	1	1	3/11/2019	16:28:28	RYM010B	1 - *END
	RYR020P1	19	AUMARMCK	QPADEV4	287837	AUMARMCK	*READY	3	1	3/12/2019	14:56:29	RYR020C	1 - *END
	RYR020P1	21	AUMARMCK	QPADEV4	287837	AUMARMCK	*READY	4	1	3/12/2019	14:56:43	RYR020C	1 - *END
	RYR020P1	23	AUMARMCK	QPADEV4	287837	AUMARMCK	*READY	3	1	3/12/2019	16:15:23	RYR020C	1 - *END
	RYM010P1	22	AUMARMCK	QPADEV4	287837	AUMARMCK	*READY	1	1	3/12/2019	16:15:14	RYM010B	1 - *END
	RYR020P1	27	AUMARMCK	QPADEV4	287837	AUMARMCK	*READY	2	1	3/12/2019	16:23:37	RYR020C	1 - *END
	RYM010P1	26	AUMARMCK	QPADEV4	287837	AUMARMCK	*READY	1	1	3/12/2019	16:21:41	RYM010B	1 - *END
	RYR020P1	29	AUMARMCK	QPADEV4	287837	AUMARMCK	*READY	1	1	3/12/2019	16:26:56	RYR020C	1 - *END
	RYM010P1	28	AUMARMCK	QPADEV4	287837	AUMARMCK	*READY	1	1	3/12/2019	16:26:49	RYM010B	1 - *END
	RYR020P1	10	AUMARMCK	QPADEV1	289716	AUMARMCK	*READY	2	1	3/14/2019	11:59:41	RYR020C	1 - *END
	RYM010P1	9	AUMARMCK	QPADEV1	289716	AUMARMCK	*READY	1	1	3/14/2019	11:37:30	RYM010B	1 - *END
	RYR020P1	12	AUMARMCK	QPADEV1	289716	AUMARMCK	*READY	1	1	3/14/2019	12:03:57	RYR020C	1 - *END
	RYM010P1	11	AUMARMCK	QPADEV1	289716	AUMARMCK	*READY	1	1	3/14/2019	12:03:54	RYM010B	1 - *END
	RYR020P1	16	AUMARMCK	QPADEV1	289716	AUMARMCK	*READY	2	1	3/14/2019	12:06:20	RYR020C	1 - *END

## Filter printer output

The top section of the panel allows you to enter the filter for the files to be shown. The user entry fields might be protected or valid for a limited number of user profiles only. Please see the ['Security'](#) section for more information.

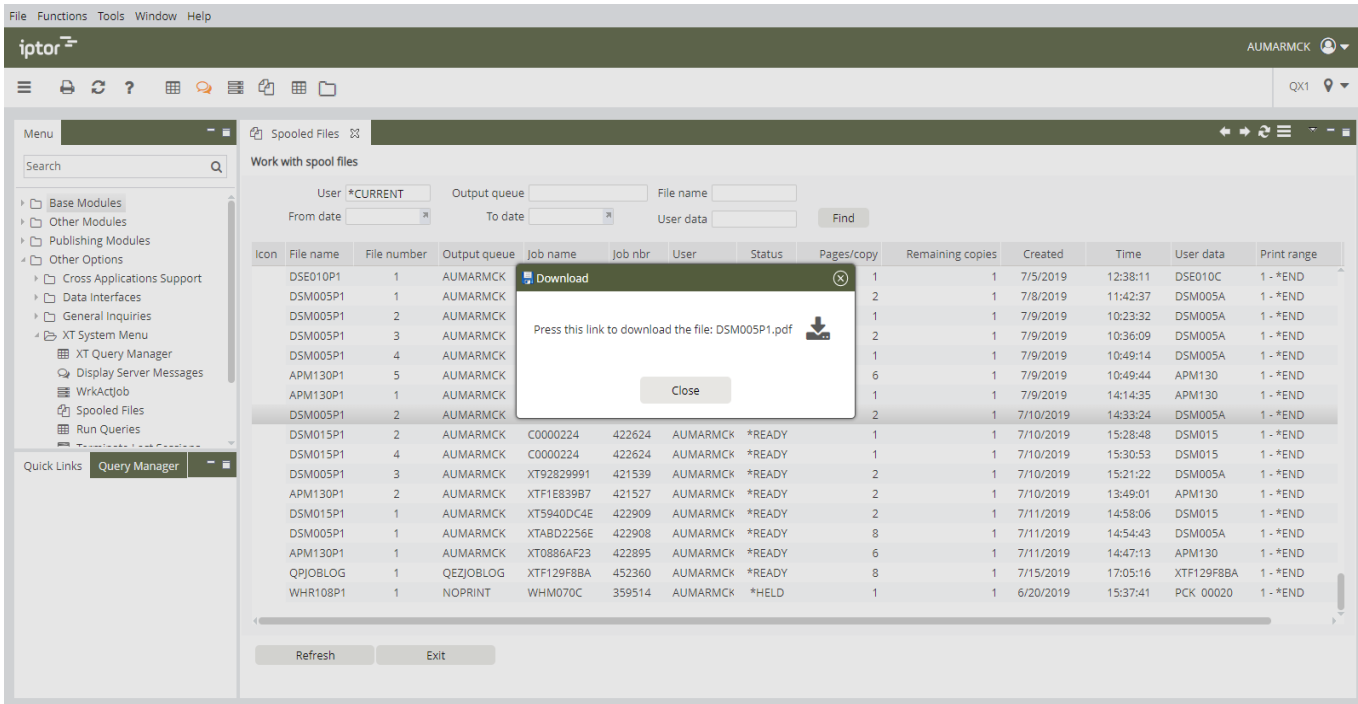
Work with spool files

User	<input type="text" value="SEHEISTE"/>	Output queue	<input type="text"/>	File name	<input type="text"/>
From date	<input type="text"/>	To date	<input type="text"/>	User data	<input type="text"/>

The system will remember you latest user and output queue selections and use it as default for the next sessions. Note! You can remove the default by entering space character and then click 'Find'.

## Export to PDF

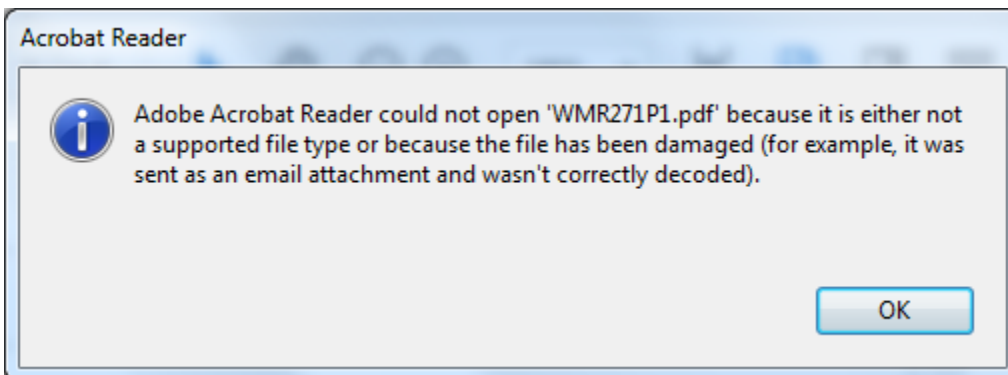
Double-click the printer output or alternatively right click & select 'Save to PDF file'.



The screenshot shows the 'Spooled Files' window in the iptor application. The window title is 'Work with spool files'. It contains a search bar, filters for User, Output queue, File name, From date, To date, and User data, and a 'Find' button. Below these is a table with columns: Icon, File name, File number, Output queue, Job name, Job nbr, User, Status, Pages/copy, Remaining copies, Created, Time, User data, and Print range. A 'Download' dialog box is overlaid on the table, showing the message: 'Press this link to download the file: DSM005P1.pdf' with a download icon and a 'Close' button.

Icon	File name	File number	Output queue	Job name	Job nbr	User	Status	Pages/copy	Remaining copies	Created	Time	User data	Print range
	DSE010P1	1	AUMARMCK					1	1	7/5/2019	12:38:11	DSE010C	1 - *END
	DSM005P1	1	AUMARMCK					2	1	7/8/2019	11:42:37	DSM005A	1 - *END
	DSM005P1	2	AUMARMCK					1	1	7/9/2019	10:23:32	DSM005A	1 - *END
	DSM005P1	3	AUMARMCK					2	1	7/9/2019	10:36:09	DSM005A	1 - *END
	DSM005P1	4	AUMARMCK					1	1	7/9/2019	10:49:14	DSM005A	1 - *END
	APM130P1	5	AUMARMCK					6	1	7/9/2019	10:49:44	APM130	1 - *END
	APM130P1	1	AUMARMCK					1	1	7/9/2019	14:14:35	APM130	1 - *END
	DSM005P1	2	AUMARMCK					2	1	7/10/2019	14:33:24	DSM005A	1 - *END
	DSM015P1	2	AUMARMCK	C0000224	422624	AUMARMCK	*READY	1	1	7/10/2019	15:28:48	DSM015	1 - *END
	DSM015P1	4	AUMARMCK	C0000224	422624	AUMARMCK	*READY	1	1	7/10/2019	15:30:53	DSM015	1 - *END
	DSM005P1	3	AUMARMCK	XT92829991	421539	AUMARMCK	*READY	2	1	7/10/2019	15:21:22	DSM005A	1 - *END
	APM130P1	2	AUMARMCK	XTF1E839B7	421527	AUMARMCK	*READY	2	1	7/10/2019	13:49:01	APM130	1 - *END
	DSM015P1	1	AUMARMCK	XT5940DC4E	422909	AUMARMCK	*READY	2	1	7/11/2019	14:58:06	DSM015	1 - *END
	DSM005P1	1	AUMARMCK	XTABD2256E	422908	AUMARMCK	*READY	8	1	7/11/2019	14:54:43	DSM005A	1 - *END
	APM130P1	1	AUMARMCK	XT0886AF23	422895	AUMARMCK	*READY	6	1	7/11/2019	14:47:13	APM130	1 - *END
	QPJOBLOG	1	QEZJOBLOG	XTF129F8BA	452360	AUMARMCK	*READY	8	1	7/15/2019	17:05:16	XTF129F8BA	1 - *END
	WHR108P1	1	NOPRINT	WHM070C	359514	AUMARMCK	*HELD	1	1	6/20/2019	15:37:41	PCK 00020	1 - *END


If the following message is shown, XT UI has not been able to convert the printer output to PDF.



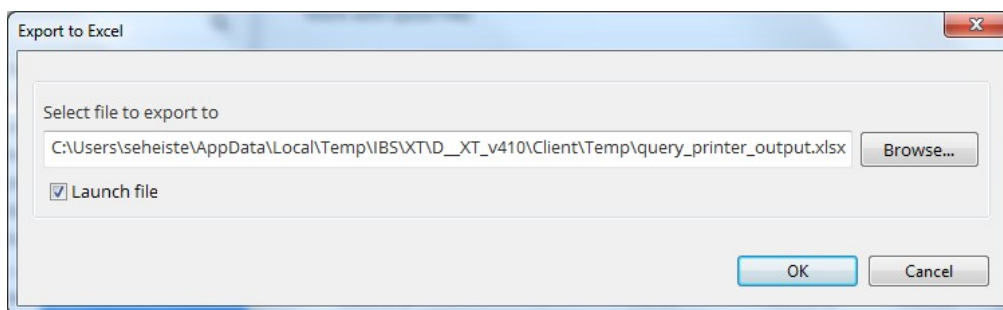
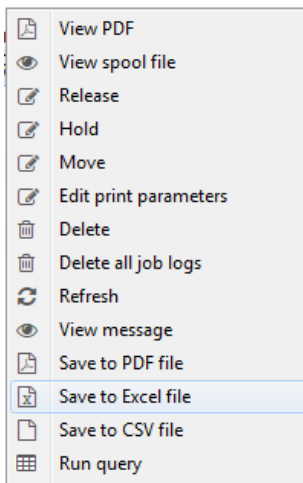
Try to use option 'View spool file' instead.

## Exporting to Excel

If supported by the backend application, printer output can be exported to Excel. The flag icon indicates that export to Excel is possible.

Icon	File name	File number	Output queue	Job name	Job nbr	User
	FMR033P	1	FILE	GL_TRANSAC	444218	SEHEISTE
	AACP305	1	HEINZ	AACC305	381823	SEHEISTE
	AACP317	1	PRT01	AACC317	443964	SEHEISTE
	AACP318	1	PRT01	AACC318	443965	SEHEISTE
	AACP312	1	PRT01	AACC312	443966	SEHEISTE
	AACP316	1	PRT01	AACC316	443967	SEHEISTE

Right-click on the actual file and select option '**Save to Excel file**'.



Note! The export function runs in the background. If large files are exported it might take some time before export is ready.

AutoSave Off | query\_printer\_output.xlsx - Excel | Heinz Steurer

File Home Insert Page Layout Formulas Data Review View Add-ins Help Team Tell me what you want to do

Clipboard Font Alignment Number Conditional Formatting Styles Cell Styles Cells Editing

UPDATES AVAILABLE Updates for Office are ready to be installed, but first we need to close some apps. Update now

A1 Account part 1

	A	B	C	D	E	F	G	H	I	J	K	L	M	N	O	P
360538	HPFLO0	SRS							200801	20080131	4000001	RP	9	4000001	XIC	A/R cor
360539	HPFLO0	SRS							200801	20080131	4000001	RP	9	4000001	XIC	A/R cor
360540	HPFLO0	SRS							200802	20080229	4000002	RP	10	4000002	XIC	A/R cor
360541	HPFLO0	SRS							200802	20080229	4000002	RP	10	4000002	XIC	A/R cor
360542	HPFLO0	SRS							200802	20080229	4000002	RP	10	4000002	XIC	A/R cor
360543	HPFLO0	SRS							200802	20080229	4000002	RP	10	4000002	XIC	A/R cor
360544	HPFLO0	SXN							200801	20080131	4000001	RP	9	4000001	XIC	A/R cor
360545	HPFLO0	SXN							200801	20080131	4000001	RP	9	4000001	XIC	A/R cor
360546	HPFLO0	SXN							200801	20080131	4000001	RP	9	4000001	XIC	A/R cor
360547	HPFLO0	SXN							200802	20080229	4000002	RP	10	4000002	XIC	A/R cor
360548	HPFLO0	DIS							201701	20170927	2	RP	393	462446	CHQ	OLLE'S
360549	HPFLO0	DIS							201210	20160518	48	RP	1389	8000348	CHQ	OLLE'S
360550	HPFLO0	SRS							201210	20150916	10423	AL	1158	10423	XIC	A/R cor
360551	HPFLO0	ADM							201610	20161116	8001170	AL	590	45	AS	A/R bill
360552	HPFLO0	ADM							201610	20161116	8001171	AL	591	46	AS	A/R bill

Sheet1 | Ready | 100%

## Security

There are no restrictions if the IBMi user profile logged on to XT Client has special authorities \*JOBCTL or \*SPLCTL.

Work with spool files

User  Output queue  File name

From date  To date  User data

If \*JOBCTL or \*SPLCTL are removed, the User entry field is protected. Only printer output owned by the logged XT Client user can be selected.

### Allow to select files for additional users

If you want to allow selection of printer output owned by other user profiles than the logged in profile, you can enter a comma separated list in the dispatcher configuration. See below.

Selectable users for printer output and messages (comma-separated)

The user selection field is now open and allows to select data for additional users.

Work with spool files

User  Output queue  File name

From date  To date  User data

### Allow to select output queues that does not exist in the library list

Selectable output queue libraries for printer output (comma-separated)

The above configuration allows to specify BACKUP\_LIB as output queue library even if it does not exist in your job's library list.

Work with spool files

User  Output queue  File name

From date  To date  User data

## **Performance**

It is recommended to keep the number of spooled files in the IBMi system as low as possible. If there are thousands of files matching the search filter, it might take long time to get the result. In worst case XT will not be able to receive all files.

## **Limitations**

Only the most important functions are provided. For more advanced printer output (Spooled files) handling we recommend to use 'IBM iAccess for Windows' (Windows or WEB version), alternatively the 5250 WRKSPLF command.