

XT Client Shortcuts

Introduction

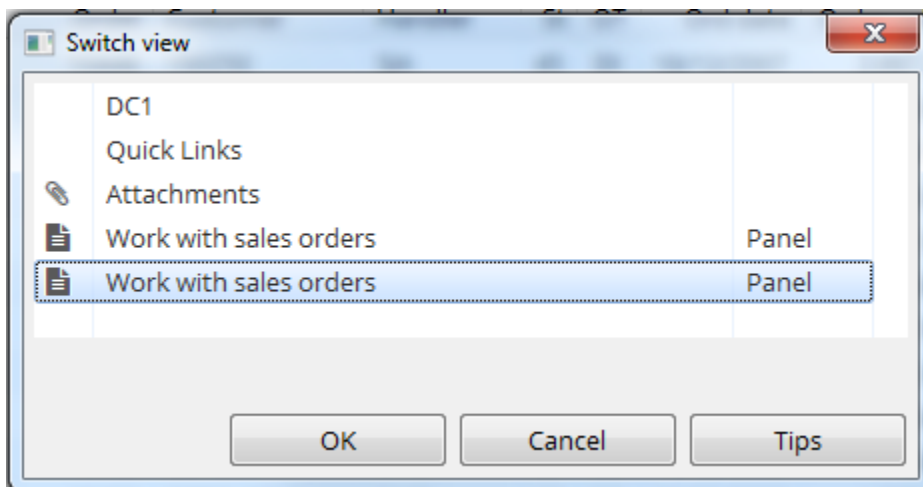
Please find below a list of shortcuts available in the XT Client. Note that help text, (tooltip), is displayed when placing the cursor on a button and the help text include what shortcut that can be used. For example when placing the cursor on top of a Back button, the help text for that button is displayed and tells that F12 can be used. For more information about each shortcut, see sections below.

Shortcuts

Action	Shortcut
Jumping between views and tabs	Ctrl + Z
Display main menu	Ctrl + F9
Display panel menu	Ctrl + F10
Activate pull-down menus	Alt (Windows client), Ctrl-Arrow-Down (Web client)
Help	F1
Ctrl + P	Print
Ctrl + R	Refresh menu structure
Shift + 12	Select enquiry function (if available)
F13 – F24	Mapped enquiry functions (if available)

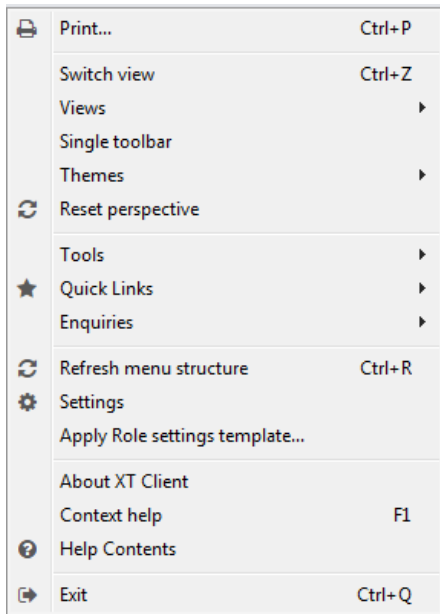
Jumping between views and tabs

Press **Ctrl + Z** to open the view switcher window. Keep down the **Ctrl** - button and toggle between views and tabs with the 'Z' button.



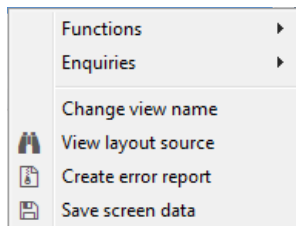
Display main menu

Press **Ctrl + F9** to open the client's main menu. Navigate with arrow keys, select options with the Enter key.



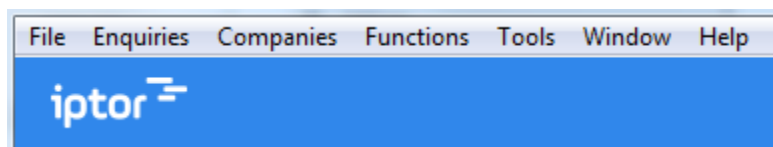
Display panel menu

Press **Ctrl + F10** to open the menu for the active tab (panel). Navigate with **arrow** keys, select options with the **Enter** key.



Activate pull-down menus

Default pull-down menus are not visible. You can activate them by pressing the **Alt** key.



Press the Alt key and the starting letter to jump between menus.

Navigation on panels

Use the **tab** and **arrow** keys to jump between fields and buttons. Hit the Enter key to run the default action or the action behind the button in focus. Quit panel with F3. Back to previous panel with F12. Refresh the panel with F5. To show a list of valid values (for supported fields only), you can use F4.