
EDW390 Work with Trading Partner

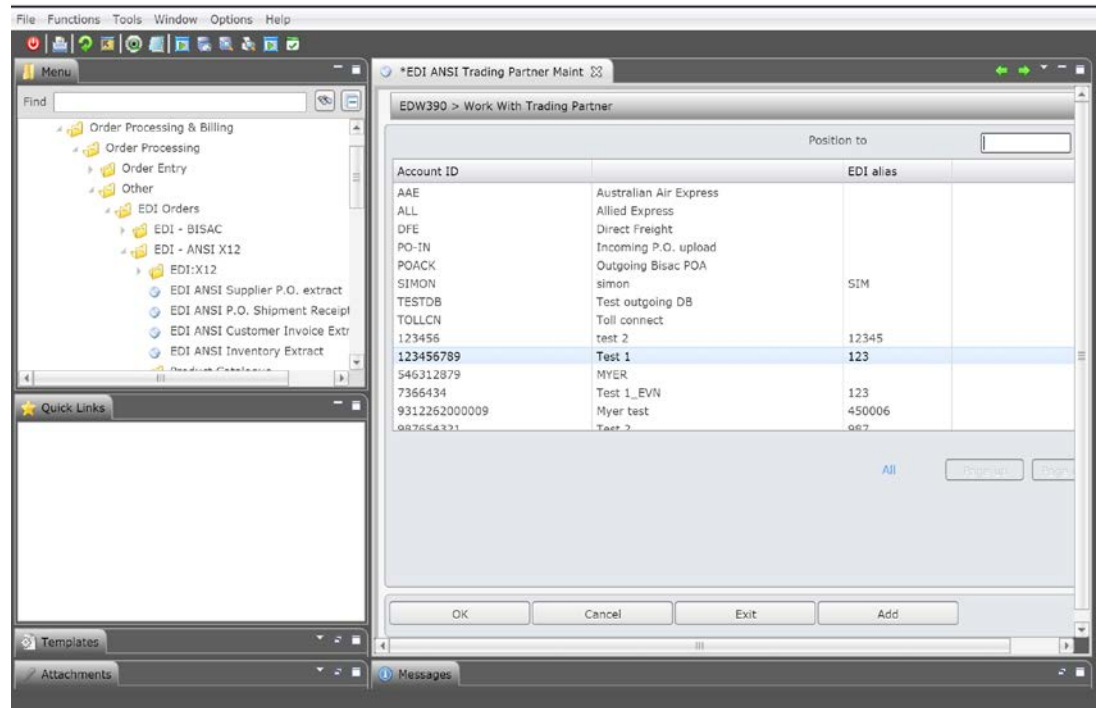
One of the components of the Price Catalogue for Appliecom is a product range definition by Trading Partner. Trading Partner details need to be defined in order to facilitate the price catalogue. Official EDI references need to be carried as well as a link to a “model” customer number for correct price detail extraction.

Each Trading Partner definition is linked to multiple specific titles for catalogue production. Linking by individual titles allows total control as to when products will appear on each Trading Partner’s catalogue.

This process maintains all the EDI account IDs where electronic trading is performed.

1. Select option **EDI ANSI Store Trading Partner Maint** from Base Modules> Distribution> Order Processing & Billing> Order processing> Other> EDI Orders> EDI-ANSI X12> Product Catalogue menu.

EDW390 Work with Trading Partner panel is displayed.



The following options are available:

- **Change** allows you to maintain the trading partner details.
- **Delete** allows you to delete the trading partner details.
- **Display** allows you to inquire on the trading partner details.

2. To add a trading partner click **Add**.

The screenshot shows a software interface for maintaining trading partner information. The main window is titled '*EDI ANSI Trading Partner Maint' and 'EDW390 > Work With Trading Partner > - Add'. On the left, there is a 'Menu' pane with a tree view containing folders like 'Order Processing & Billing', 'Order Processing', 'Order Entry', 'Other', 'EDI Orders', 'EDI - BISAC', 'EDI - ANSI X12', and 'EDI:X12'. Below the menu is a 'Quick Links' section. The main area contains a form with the following fields: 'Account ID' (highlighted in yellow), 'Description' (highlighted in yellow), 'EDI alias', 'Contact name', 'Telephone', 'Email address', 'Customer link' (with sub-fields 'Cust class type' and 'code'), and 'Prod catalogue' (with sub-fields 'Item class type', 'code', and 'Pricing cust'). At the bottom, a message box says 'The account ID cannot be blank.'

Relevant Fields

- Account ID** The standard account number is required for BISAC as it identifies EDI customers and accesses Customer Masterfile records. Used in Batch/EDI File Maintenance.
- Description** A description of the trading partner is given.
- EDI alias** As the trading partner number is quite long the EDI alias is an alternate name referring to the trading partner. The billing number for example could be used as it is an easy to remember number.
- Contact name** This is the name of the contact person for this account.
- Telephone** This is the phone number for the contact person for this account.
- Email address** The email address for the contact person for this account is entered.
- Customer class type** Classification types group customers into specific categories. The customer classification type defaults and can be overridden.
- This is used to select customers for this order. Customer account numbers are validated to ensure they belong to this Classification. If there is an entry in the classification and the major store code then customers must be valid to both. If both of these are left blank, then any customer account can be entered.
- In Quote Generation to select outstanding orders/quotes to

	print for a particular customer classification type enter the type in this field.
	In Work with Trading Partner the customer classification type this trading partner falls under.
Customer class code	<p>Classification codes are a second level of classification types. Entry in this field depends on the selection made in the Classification Type field. In Quote Generation select to print outstanding orders/quotes for a particular customer classification.</p> <p>In Mass Order Entry customers belonging to a Classification code can be selected.</p> <p>In Work with Trading Partner the customer classification code applicable to the trading partner.</p> <p>Copy order forms can be printed for a more specific group of customers by selecting class codes, for a specific classification type, to either be included or excluded in the print run.</p>
Class type	<p>TMSDS/CC-TYPE includes a flag to indicate multiple codes that are allowed for the classification type.</p> <p>In Catalogue Creation/Download this is the classification type to be included in the product catalogue creation.</p> <p>In Work with Trading Partner the title class type this trading partner falls under.</p>
Class code	<p>In Catalogue Creation/Download the class code to be included in the product catalogue creation.</p> <p>In Work with Trading Partner the title class code this trading partner falls under.</p>
Pricing customer	This is the pricing customer used for this trading partner.

3. Key the required fields and Page down.

Relevant Fields

EDI format	The EDI format used by this trading partner is selected from: ANSI X12, BISAC or EDIFACT.
Service provider	This is the service provider used by this trading partner.
Access method	The access method used by this trading partner can be Direct, FTP or Modem.
IP address	This is the trading partners IP address.
FTP script	The FTP script used to transfer data including the file name and library it comes from.
Filename/library	The FTP script used to transfer data including the file name and library it comes from.
Command	The command used to transfer the data must be given.
PO	If using FTP transfer, this records the data coming in and going out. In this field indicate if a Purchase Order (PO) is to be received and/or sent out.
POA	If using FTP transfer, this records the data coming in and going out. In this field indicate if a Purchase Order Acknowledgement (POA) is to be received and/or sent out.
ASN	If using FTP transfer, this records the data coming in and going out. In this field indicate if an Advanced Shipping Notice (ASN) is to be received and/or sent out.

Invoice	If using FTP transfer, this records the data coming in and going out. In this field indicate if an invoice is to be received and/or sent out.
Remittance	If using FTP transfer, this records the data coming in and going out. In this field indicate if a remittance is to b received and/or sent out.
PAD	If using FTP transfer, this records the data coming in and going out. In this field indicate if a PAD is to be received and/or sent out.
Catalogue	If using FTP transfer, this records the data coming in and going out. In this field indicate if a catalogue is to be received and/or sent out.
Manifest	If using FTP transfer, this records the data coming in and going out. In this field indicate if a manifest is to be received and/or sent out.
Database	If using FTP transfer, this records the data coming in and going out. In this field indicate if a database is to be received and/or sent out.

4. Enter all the relevant data.
5. Press **<ENTER>** and the trading partner is added to the system.