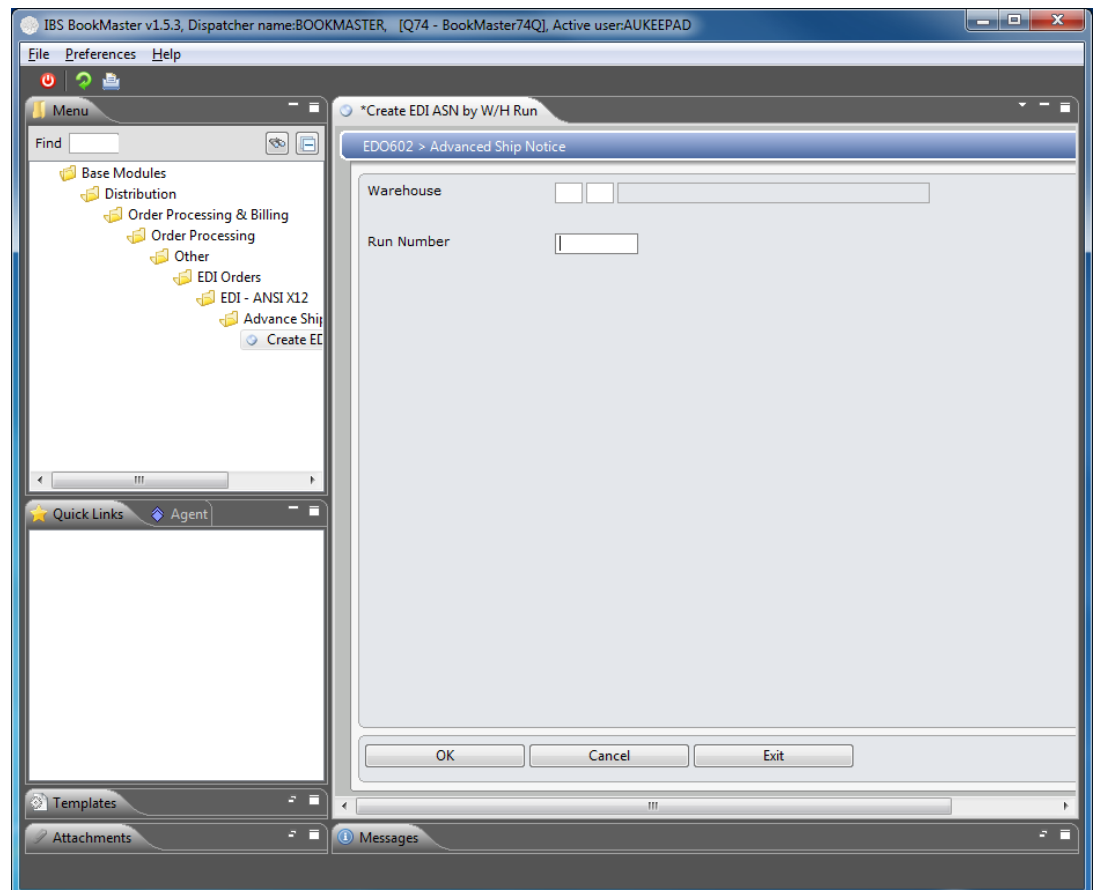

EDO602 Create ASN by Warehouse Run

This program can be run to create the Advance Shipment Notice for a specific warehouse run. It converts dispatched container details into an ANSI X12 format. It can be run after a warehouse run to pick all the orders for that run.

1. Select option **Create EDI ASN by wh/run** from Base Modules> Distribution> Order Processing & Billing> Order processing> Other> EDI Orders> EDI-ANSI X12> Advance Ship Notice.

EDO602 Advanced Ship Notice panel is displayed.



2. Enter the warehouse and Run Number and click OK to create the notice.