
EDM515 Product Range Maintenance

This program maintains a product range by buying group. This is used to validate which titles are to be replenished either by the RPO generation process or those that are manually added to the RPO order.

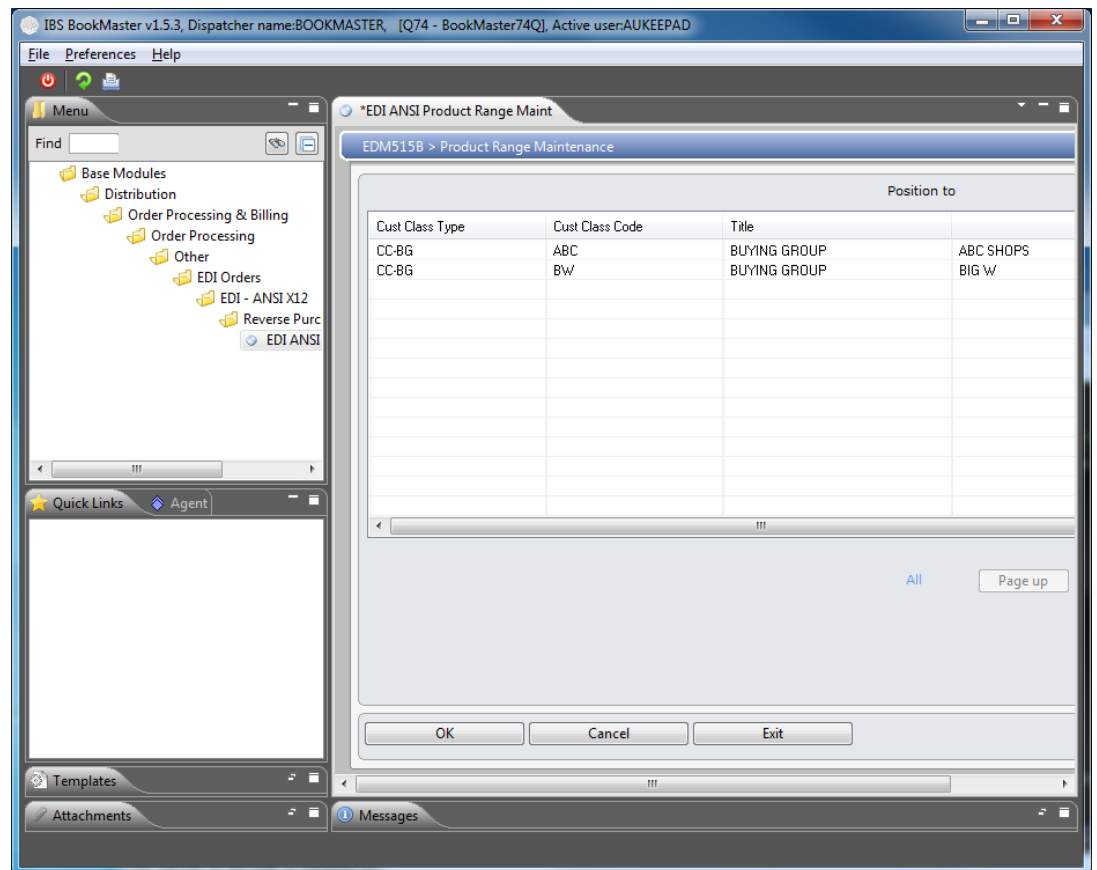
1. Select option **EDI ANSI Product Range Maint** from Base Modules> Distribution> Order Processing & Billing> Order processing> Other> EDI Orders> EDI-ANSI X12> Reverse Purchase Orders menu.

EDM515 Product Range Maintenance panel is displayed.

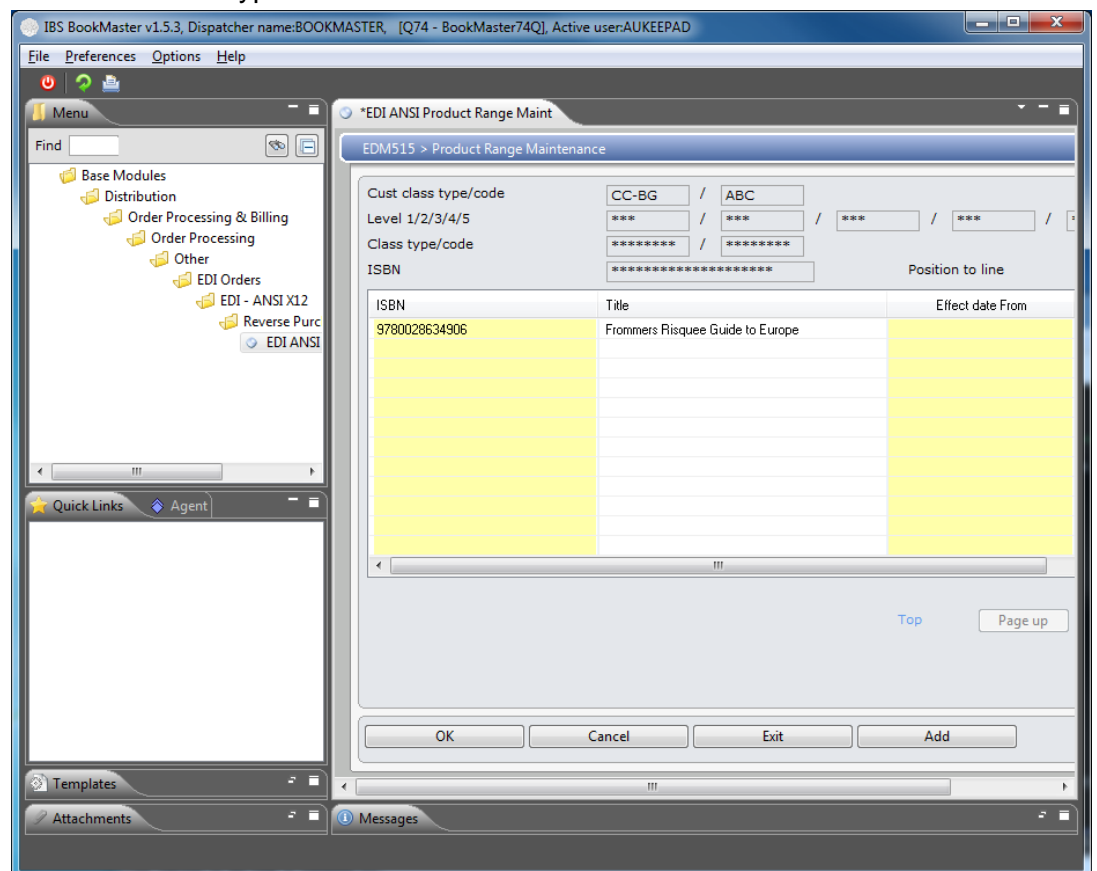
The screenshot displays the IBS BookMaster v1.5.3 application window. The title bar indicates the dispatcher name is BOOKMASTER, the session is [Q74 - BookMaster74Q], and the active user is AUKEPAD. The menu bar includes File, Preferences, and Help. On the left, a 'Menu' pane shows a tree structure with 'Base Modules' expanded, leading to 'Distribution', 'Order Processing & Billing', 'Order Processing', 'Other', 'EDI Orders', 'EDI - ANSI X12', and 'Reverse Purc'. The 'EDI ANSI' option is selected. Below the menu is a 'Quick Links' section with an 'Agent' button. At the bottom are 'Templates', 'Attachments', and 'Messages' tabs. The main window area is titled '*EDI ANSI Product Range Maint' and contains the 'EDM515 > Product Range Maintenance' panel. This panel has a header '<Optional entry, leave blank to select>' and two input fields for 'Customer class type' and 'code'. Below this is a '<Selection>' section with five levels (Level 1 to Level 5), each with a '***' catch-all option and a corresponding input field. There are also input fields for 'Class Type', 'code', and 'ISBN'. At the bottom of the panel are 'OK', 'Cancel', and 'Exit' buttons.

Note If there are no entries against a customer class type and code are currently in the system the following error message displays: **Customer class type cannot be blank**. These fields can only be left blank to select when entries exist in the system.

Asterisks *** indicate a catch all, meaning the system will include all valid definitions for that field.



2. Select a class type.



Relevant Fields

Effective from date The date the price code becomes effective.

Effective to date This is the date up until when the product is effective.

3. Click **Add** to go to the bottom of the list and add additional ISBNs.