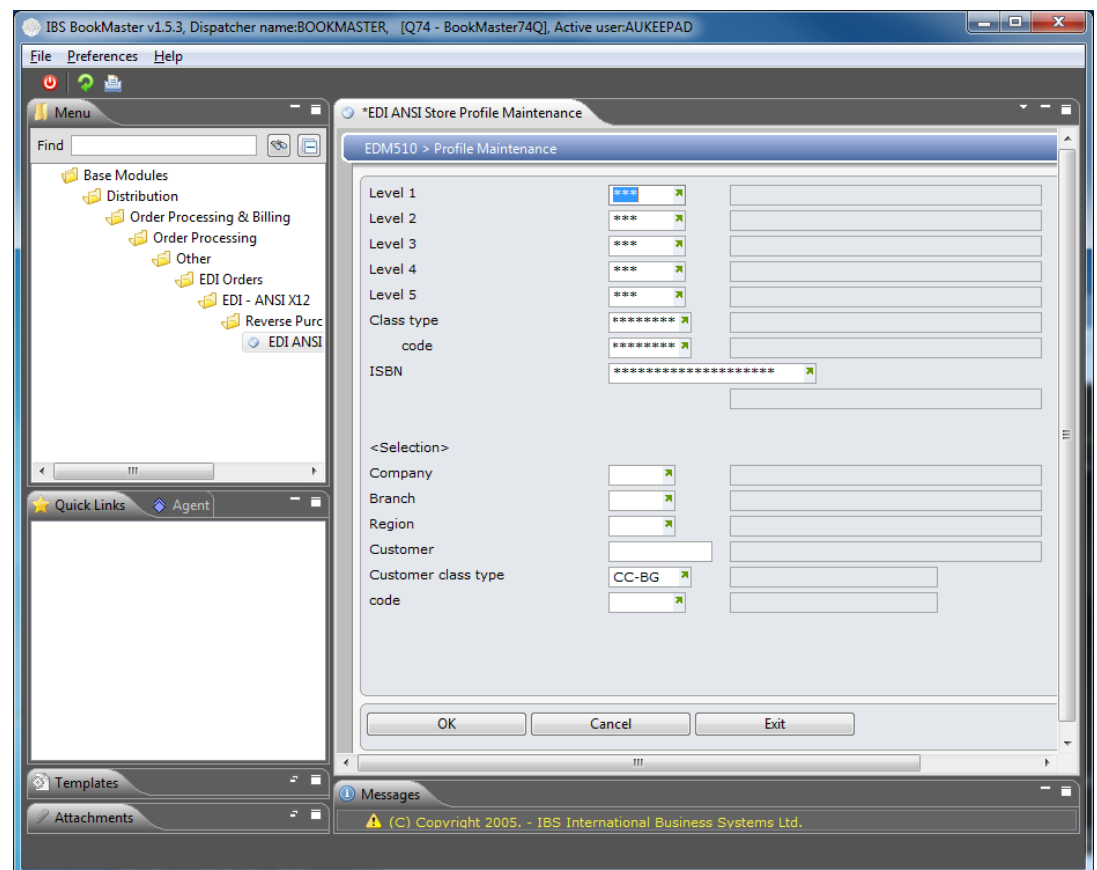

EDM510 Store Profile Maintenance

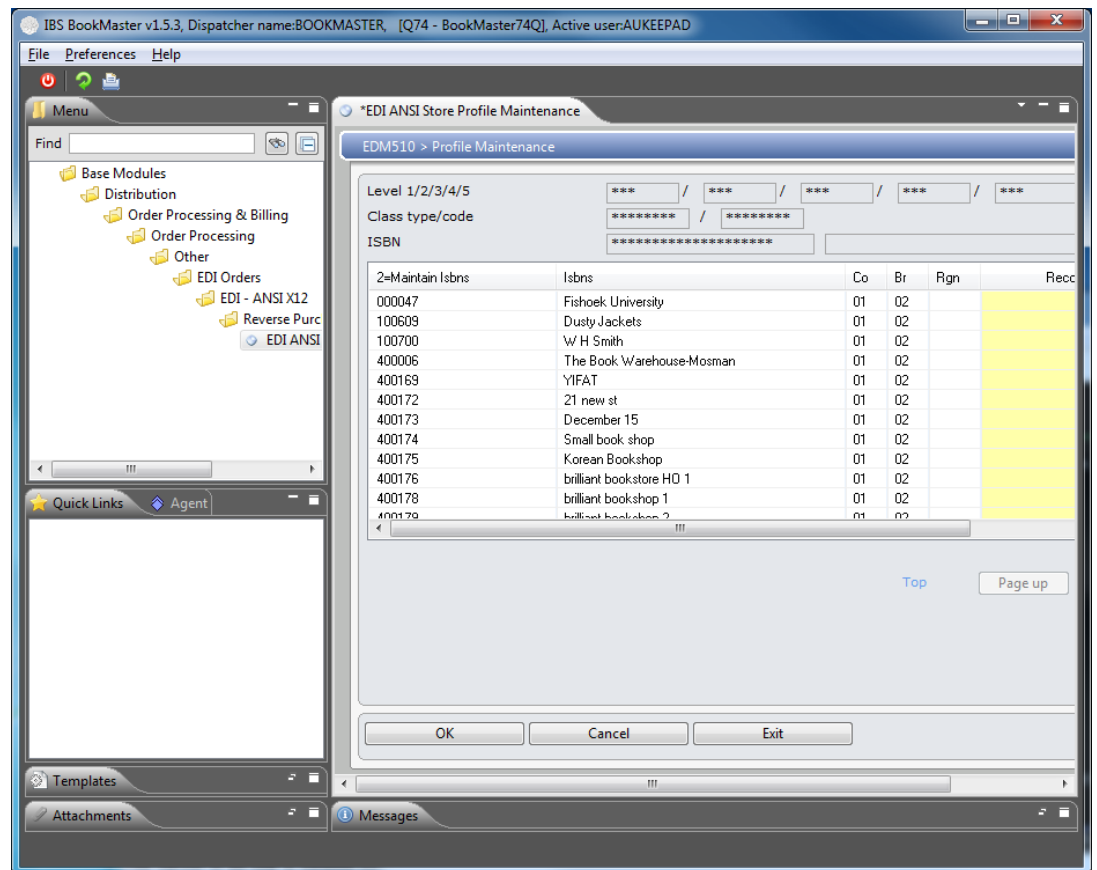
This program maintains the Profile Definition file (EDPRF00P) which contains each of the product categories and the recommended retail sales level of a store. The title hierarchy is used to maintain these details and all the stores for a group can be entered at the same time. The Profile Maintenance shows product range at store level and the store recommended budget level. Select products for maintenance for selected stores. This allows for product selections and customer selections.

1. Select option **EDI ANSI Store Profile Maintenance** from Base Modules> Distribution> Order Processing & Billing> Order processing> Other> EDI Orders> EDI-ANSI X12> Reverse Purchase Orders menu.

EDM510 Profile Maintenance panel is displayed.

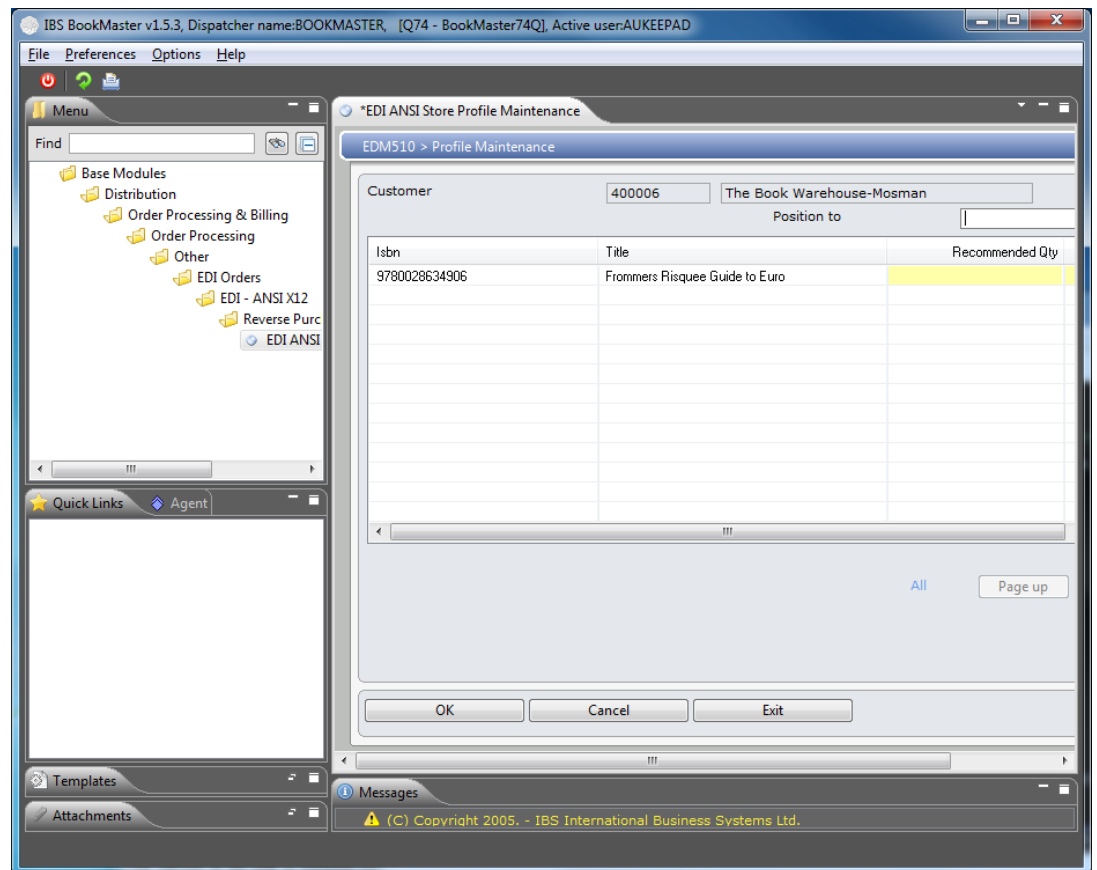


The system defaults asterisks *** meaning it will include all titles within the levels and classifications.



The Recommended Quantities and Values on the above screen are totals per store of the quantities and values entered against each title within the title detail screen for the selected store.

2. Select a customer to display for maintenance of the ISBN profile within a selected customer. The following panel is displayed.



Relevant Fields

Recommended value

Entry of the recommended value is optional. Enter the recommended value in dollars. The recommended budget by value and the value of products you wish to hold must be entered. For example: \$200 in Store X and \$100 in Store Y.

Recommended qty

Enter the recommended quantity in units. This is usually used for individual titles and is optional.

3. Enter the quantities and values against the items required and press <ENTER>.

These values are the total quantities and values which are used to determine the stock replenishment level to be suggested when replenishment orders are generated.

The system also totals the quantities and values for all titles for the store and displays only the totals for the store on the main screen.