
DSW500 Document Export Management

Overview

This program provides the following facilities:

- manage IBM POWER SYSTEM files to be exported to PC
- export historical sales data to PC
- Automate data transfer to Info mark.

Explanation

This is a download Master file to store information to be exported to a PC.

TMSDS/DE-ACTN has been provided to store the action type and program name.

There are programs to manage IBM POWER SYSTEM files which need to be exported to PC. The program provides the following functionality:

- To export IBM POWER SYSTEM files to PC. *(Option 1)*
- Allow to change IBM POWER SYSTEM file's attribute.*(Option 2)*
- Copy IBM POWER SYSTEM file to other user. *(Option 3)*
- Delete record in download Masterfile as well as physically delete IBM POWER SYSTEM file from download library. *(Option 4)*
- Display Detail file's attribute*(Option 5)*
- Hold IBM POWER SYSTEM file instead of exporting them to PC and this will change the record status to H=Held. *(Option 6)*
- To release held record and change the record status from H=Held to R=Ready. *(Option 7)*
- Allow querying the physical file to be exported to PC. The command used to query the physical file will be "runqry *n download library/file name". Download library is defined in *******/DATALIB**.

The process to export IBM POWER SYSTEM files to the PC is as follows:

- Export program checks the status of the file to avoid possible conflicts and unauthorized access.

- It then checks existence of the “to folder” and the user authority.
- If there are no errors program starts CL command CPYTOIMPF (Copy To Import File) which does actual conversion into comma delimited format. In this time “from file” is locked and the status is set to S- Send.
- To folder usually should be the part of the integrated file system on IBM POWER SYSTEM which can be mapped and accessed from the user’s PC as a network drive and it can have all essential security options.
- After successful sending operation the program deletes “from file” and also the record from the download Masterfile.
- If for some reason the operation failed the status is changed to F- Failed.
- **Add** also allows IBM POWER SYSTEM files to be exported to the PC, the library and database to be used in the export is nominated using this function.

Setup Requirements

Control Files that need to be established specifically for use by this process are:

TMSDS/DE-ACT Action code used for document export

TMSDS/DE-APPL Application path (Ext Data Pgm to call by user)

TMSDS/DE-AS400 IBM POWER SYSTEM files to be exported to PC

TMSDS/DE-CLTP Document exchange client path

TMSDS/DE-DFLT Default document prefix

TMSDS/DE-EXCH Document exchange defaults

TMSDS/DE-PRFIX Prefix and format options used in document export

TMSDS/DE-STS Status for document export

DS/DE-NUMBER Number file

Examples

This section illustrates examples concerning:

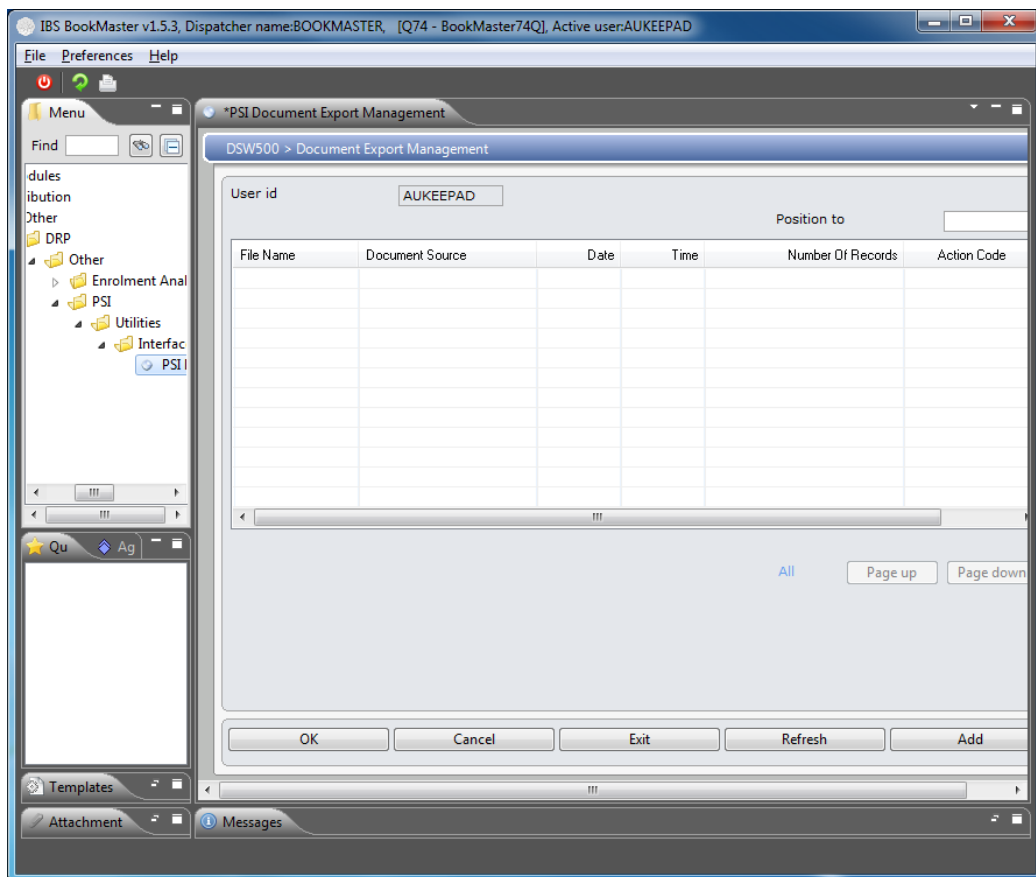
[Example 1: Export Files to the PC](#)

Example 1: Export Files to the PC

This example describes how to export files to the PC.

1. Select option **PSI Document Export Management** from Base Modules> Distribution> Other> DRP> Other> PSI> Utilities> Interface Options menu.

DSW500 Document Export Management main panel is displayed.



Options

- Display** Access Document Export Management in inquiry mode to inquire on document export management details.
- Hold** Access Document Export Management in inquiry mode to change status of file from ready to hold.
- Release** Access Document Export Management in inquiry mode to change status of file from hold to ready.
- Query** This is used to query on a selected file in document export management.
- Export** Export Historical Sales Data to PC and is available on the Sales Analysis Inquiry by Customer Level
- Change** Access Document Export Management in change mode to maintain document export management file details.

Copy	Access Document Export Management in copy mode to copy document export management file details.
Delete	Access Document Export Management in delete mode to delete document export management file details.

Functions

Add	This is used to export files to the PC via function key.
---------------------	--

2. Click **Export**.

The data downloads to the PC and can be found in the folder defined within this program in the form of a spreadsheet.

Note To copy/delete/display/hold/release/query a file, export files to PC via function key, and maintain a file to be exported, select the formula and click on the corresponding option.

Cross References

- DSO595A – Build informark data - Main
- DSO596A – Build informark distribution channel - Main
- DSO924A – GUI reporting - Export to CSV and print report