
DSR385 Moving Annual Total Report

<i>Overview</i>	This report displays monthly sales and returns values recorded for a selected customer sequenced by branch
<i>Purpose</i>	This panel allows you to: Print moving annual total report

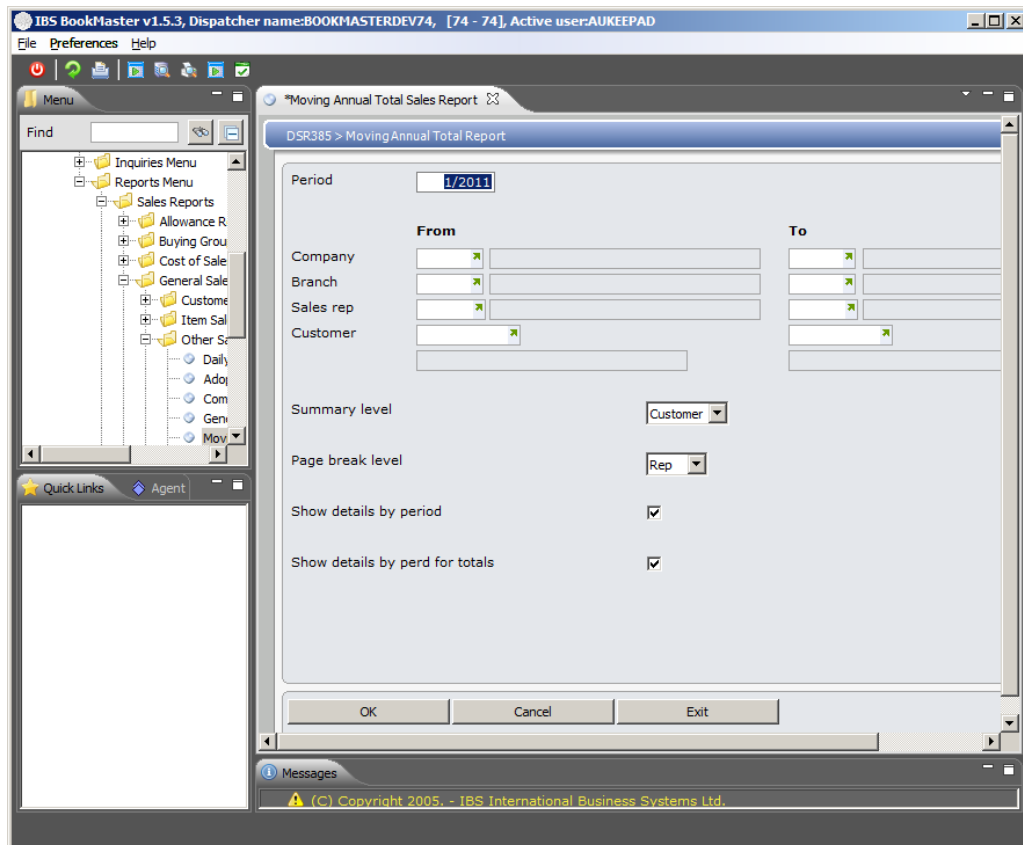
Follow up

Printouts

This is printout program.

Selection of the following is required:

- Period
- Company
- Branch
- Sales representative
- Customer
- Summary level(Customer or Sales Representative)
- Page break level(Sales Representative or Branch)
- Show details by period flag
- Show details by period for totals flag



Click **OK**.

Moving Annual Total report gets generated.

This report displays following information

- Company
- Branch
- Sales representative
- Period
- Customer
- Gross Sales quantity and value where gross sales are calculated as net - returns
- Returns quantity and value which are MTD this year
- Net quantity and value which are MTD this year
- Returns % which uses gross value figure
- Customer total

TMS DEVELOPMENT - RELEASE 7.5

REPORT : DSR225

RUN DATE : 19/06/09

RUN TIME : 21:30:18

MOVING ANNUAL TOTAL REPORT

COMPANY: 01 R7.2 TAILOR MADE SYS

BRANCH : 02 NSW N.S.W.

PAGE : 5

PERIOD : 8/1998

REF : 02

ALBERT BLACK

CUSTOMER	PERIOD	GROSS SALES		RETURNS	NET		RETURNS
		QTY	VALUE	QTY	VALUE	VALUE	%
0000100600 Shearers Bookshops	8/1998	822	11,345.60		.00	822	11,345.60
	7/1998	589	10,469.88		.00	589	10,469.88
	CUSTOMER TOTAL:	1411	21,815.48		.00	1411	21,815.48
0000100601 Shearers Bookshops	7/1998	224	1,707.35		.00	224	1,707.35
	CUSTOMER TOTAL:	224	1,707.35		.00	224	1,707.35
0000100604 Hotline Books Pty Ltd	8/1998	633	9,480.45		.00	633	9,480.45
	7/1998	431	5,251.44		.00	431	5,251.44
	CUSTOMER TOTAL:	1064	14,731.89		.00	1064	14,731.89
	8/1998	3994	55,044.68		.00	3994	55,044.68
	7/1998	3606	58,626.63		.00	3606	58,626.63
	REP TOTAL:	7600	113,671.31		.00	7600	113,671.31
	8/1998	3994	55,044.68		.00	3994	55,044.68
	7/1998	3606	58,626.63		.00	3606	58,626.63
	BRANCH TOTAL:	7600	113,671.31		.00	7600	113,671.31