
DSO359 Create PSI Master from Outstanding Orders

Overview This program creates the PSI Masterfile from the Outstanding Order file for the following document types: B=Backorder, F=Forward Orders, R=Reservation Orders.

Explanation

This generates suggested Orders for items with backorders, forwards orders and reservation quantities but no sales forecast.

TMSDS/IM-IBOR indicates if the item is to be included in generating the PSI record. So items such as Out of Prints can be prevented from being written to the PSI Masterfile.

Examples

This section illustrates examples concerning:

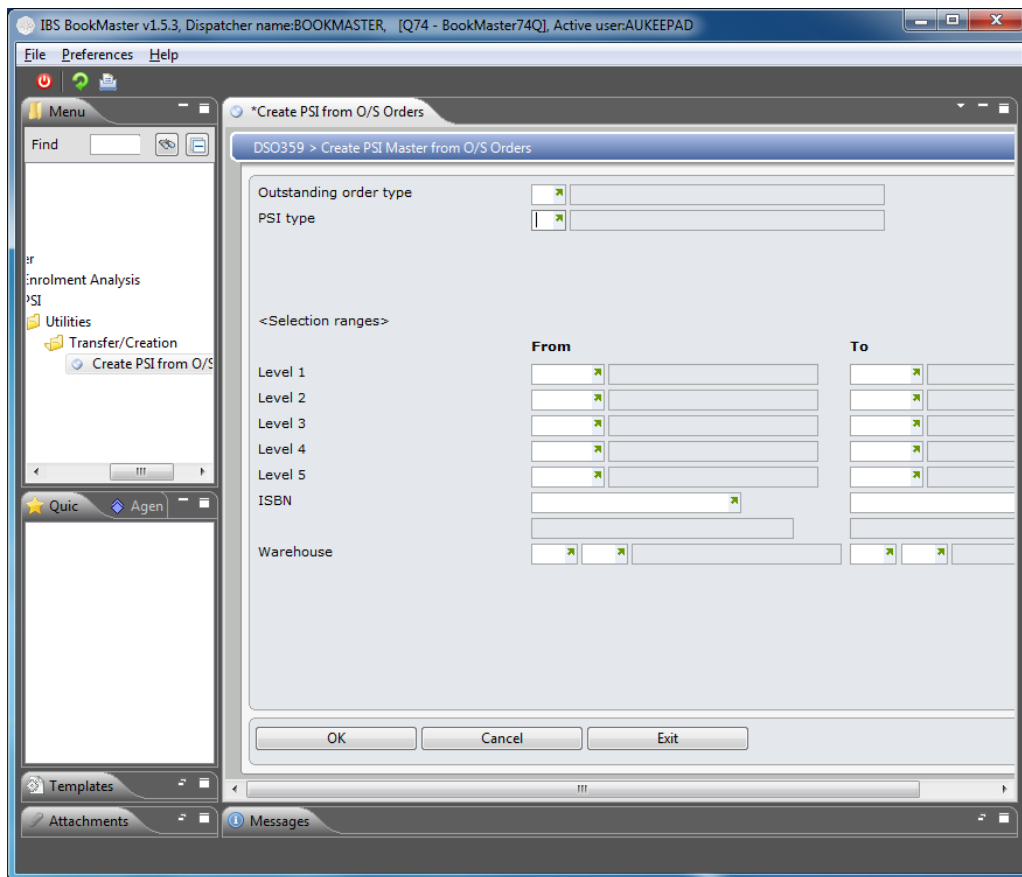
[Example 1: Creation of PSI Masterfile from Outstanding Orders](#)

Example 1: Creation of PSI Masterfile from Outstanding Orders

This example describes how to create PSI Masterfile from outstanding orders.

1. Select option **Create PSI from O/S Orders** from Base Modules> Distribution> Other> DRP> Other> PSI> Utilities> Transfer/Creation menu.

DSO359 Create PSI Master from Outstanding Orders main panel is displayed.



Relevant Fields

Outstanding order type

Select an outstanding order type that is required in the transfer to PSI based on **TMSDS/OS-DT**.

PSI type

Select the PSI type to be used in the suggested order generation or leave blank to accept all. These are user defined PSI types definitions that define major Businesses by Groups. Example: Export, Retail, Inter-company, Projects.

Warehouse

If warehouse codes are not entered, the program selects all the Outstanding orders for the warehouses linked to the entered PSI Type based on **TMSDS/PSI-WH**.

2. Key in required fields and click **OK**.

Suggested Order is generated.