
DSO153 Upload Production Data

Overview

This program is used to upload the production data from a CSV file with an option to transfer data into the forecast file.

Explanation

This uses the PSI Purchase input file (DSPMPIOF) which holds the production data from the Supplier.

This is used to compare the planned sales and purchases data in PSI with confirmed or actual production data from the supplier to assist in making the sales and purchase plan to be more accurate in relation to the actual products that the supplier will be able to provide.

The production data is used in PSI maintenance program DSM152 to compare against PSI suggested order quantities.

TMSDS/PSI-FCST determines the Production data ID the record type, the forecast ID to be used, the Type of sale and the Bond type Warehouse code.

TMSDS/PSI-UPD contains the Supplier code and the File identification number.

Example: Production File layout

File ID	FTxxx0114
File Name	Arrival Forecast
Description	Delivery information calculated in Arrival Forecast creating system Supply In information (including delivery date) based on week/year to To location Arrive Forecast is composed of 2 information, "Past record information" and "Plan information". "Past record" is created from shipping record of delivery facility and defined I/V information and PEC SW-I/V is reflected. Date item is used with execution date (ETA is plan base), week item is calculated based on execution date. "Plan information" is created from answer in frame in SNP. Week item is used with plan week of answer in frame and date item is calculated based on plan week.
Record Unit	1 record by every PSI Plan year week/FROM Location/TO Location/Destination/Transport method/Production Model Number/Official Model Number/Sales warehouse In week/ Plan status/IV number on-site/PEC IV number. As Past record is made from I/V detail unit ⇒ IV unit, it is made from unit of FROM, To, Destination, Sales warehouse In. Plan is made from unit of

	From, To, Destination, Transport method, model, sales warehouse In.
Note	<p>Period subject to this I/F is previous week of sales IN standard - all week subject to PSI (W + 36). Quantity 0 record is out of transmission. The data of past record (On the ocean or Defined I./V) is created based on I/V. ETD and ETA -- Set ETD and ETA on I/V. Sales Warehouse In Date -- Calculate based on ETA in I/V considering L/T of every destination. ETD Week and Sales warehouse In week -- Calculate week applied to the above ETD and sales warehouse In Date.</p> <p>The data of Plan (delivery definition or PSI definition or PSI notice) is created based on answer in frame. ETD Week -- Calculate based on delivery standard year week (receipt standard or ETD standard) considering L/T of To Location. ETD -- Calculate date within the above ETD week applied to ETD the day of week (#1) set up as default value of From or To Location. Sales warehouse In week -- Set purchase year week. Sales Warehouse In Date -- Calculate date within the above purchase year week applied to Sales Warehouse In Date the day of week (#1) set up as default value of From or To Location. ETA--Calculate data considering L/T set up as default value of From or To Location. #1:Set up default value based on the standard ship at the time of calculating transportation L/T set up by SNP for every From or To location.</p> <p>Use destination code that express the place of last destination with United Nation code (UL/ LOCODE)</p> <p>Set up method of model number In layout of Arrival Forecast, 4 model number (Permanent model number, Production model number, APO model number and Main model number) as item. Regarding Permanent model number, shipped model number is set up in case of one of past record or set up same value with Production model number in case of planned one. Regarding Production model number, uniform Production model number is set up. Regarding APO model number, APO model number applied to Production model number is set up. Regarding Main mode number, Main model number applied to Production model number is set up.</p>

Examples

This section illustrates examples concerning:

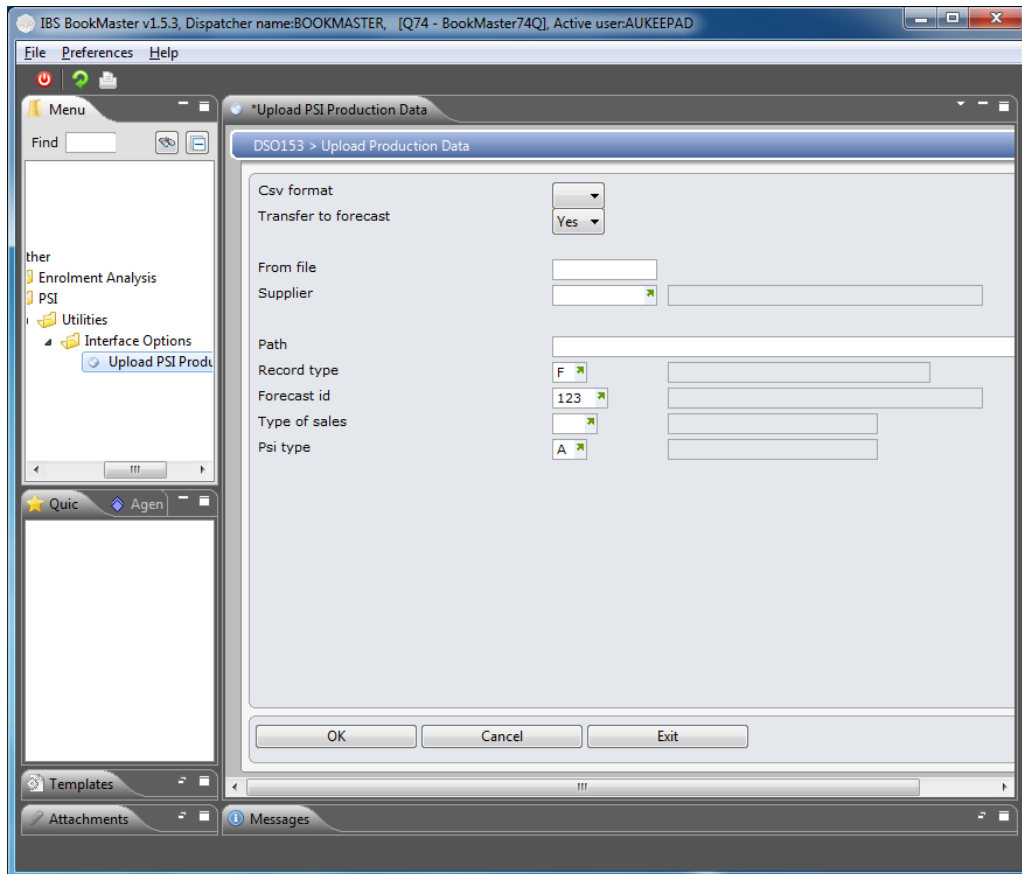
[Example 1: Upload Production Data from a CSV File](#)

Example 1: Upload Production Data from a CSV File

This example describes how to upload production data from a CSV file.

1. Select option **Upload PSI Production Data** from Base Modules> Distribution> Other> DRP> Other> PSI> Utilities> Interface Options menu.

DSO153 Upload Production Data panel is displayed.



Relevant Fields

From File	Enter the External File identification code to be used in the transfer procedure. TMSDS/PSI-FCST determines the Production data ID the record type, the forecast ID to be used, the Type of sale and the Bond type Warehouse code.
Supplier	Enter the Supplier Code to be used in the transfer procedure.
Transfer to Forecast	Should the production data be transferred into a Forecast File?

2. Key in required fields and click **OK**.

The data is now uploaded into a pre-defined Forecast ID that was established in **TMSDS/PSI-FCST**.

The production data can now be viewed in PSI maintenance program DSM152 to compare against PSI suggested order quantities.