
DSM620A Notice Board Message Maintenance

Overview

On the Website - A 'message board' displays at the top of the page at the log in/language selection page and at the first page after log in. Messages that are for all customers (customer type = blank or is null) or for this customer type display. Messages display from the most recent effective date to oldest, with a header and message text below the header. When a customer arrives at the site (before logging in) any messages tagged as 'for all customer types' or matching the anonymous customer's type are displayed. When a customer logs in, any additional messages for this customer type are displayed.

Examples

This section illustrates examples concerning:

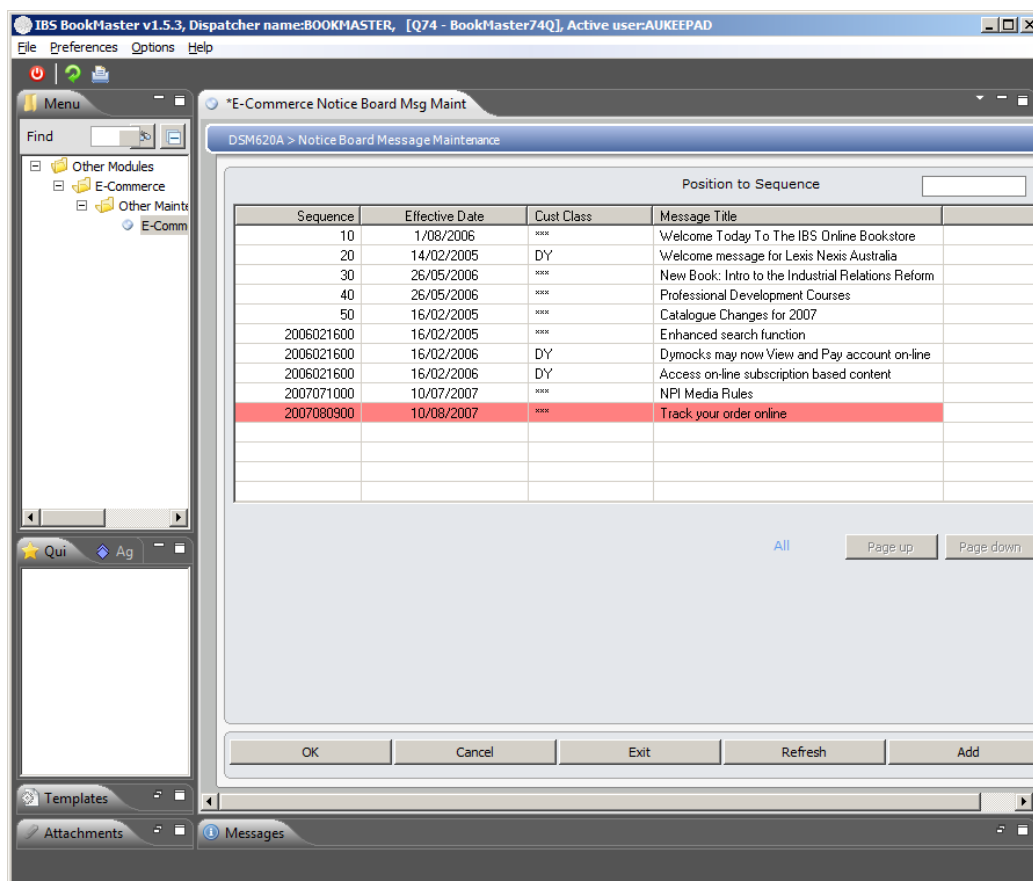
[Example 1: Notice Board Message Maintenance.](#)

Example 1: Notice Board Message Maintenance

This example describes how to retrieve notice board messages.

1. Select option **E-Commerce Notice Board Msg Maint** from Other Modules> E-Commerce> Other Maintenance menu.

DSM620A Notice board message maintenance panel is displayed.



Relevant fields

Sequence

This sequence number is defaulted from the number file.

Effective date

This is the starting date from which this message takes effect.

Cust class

This determines the customer class code to use in the selection. Once the customer classification type has been entered a search on this field for the relevant code is available. Note: If this field is left as ***, the system selects all customer class codes.

In Notice Board Message Maintenance select a valid customer classification code. Customer classification codes are established in **TMSDS/MSG-CTYP**.

Message item

A meaningful message of a maximum of 50 characters can be entered as the item line.

Options

Change

Access DSM620B Notice board message maintenance in Change mode which displays fields from DSNB00P.

Delete

Access DSM620B Notice board message maintenance in Delete mode which deletes selected record from DSNB00P.

Functions

Add

Access DSM620B Notice board message maintenance in
Add mode which adds record in Notice Board Message File.

Note To add/change/delete message to and from notice board, select the formulae and click the corresponding option.