
XAM145 Work with Form Panels

Overview Use this panel to work with form panels.

Examples

This section illustrates examples concerning:

[Example 1: Work with Form Panels](#)

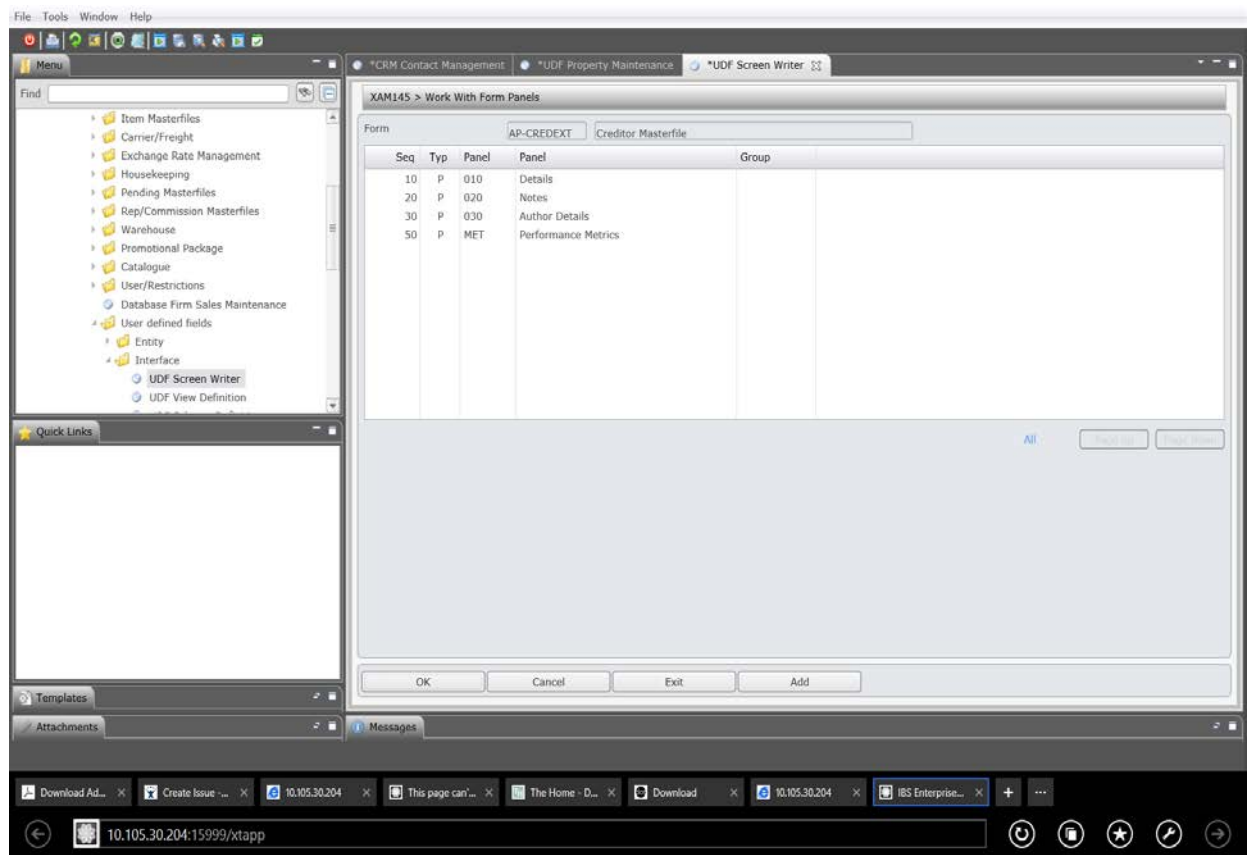
Example 1: Work with Form Panels

1. Select option **UDF Screen Writer** from Base Modules> Distribution>Masterfiles>Database Management> Database Management>User defined fields>Interface menu.

XAM140 Work with Form panel will be displayed.

2. Select a record and click **Detail**.

XAM145 Work with Form Panels panel will be displayed.



Options

Detail

Steps into maintenance screen for Panel Details where you set up properties to be displayed on this panel.

Panel

Steps into Work with Form Panels where you select description, sequence and F/P (function/panel) type.

Copy

Copies an existing panel's information into a new panel id.

Delete

The selected input Panel or Function. Highlight the required Panel or Function select OK, next screen displays. Select **Ok** to confirm deletion or Cancel to undue the delete option.

Move

Allows the panel position to be changed.

Functions

Add

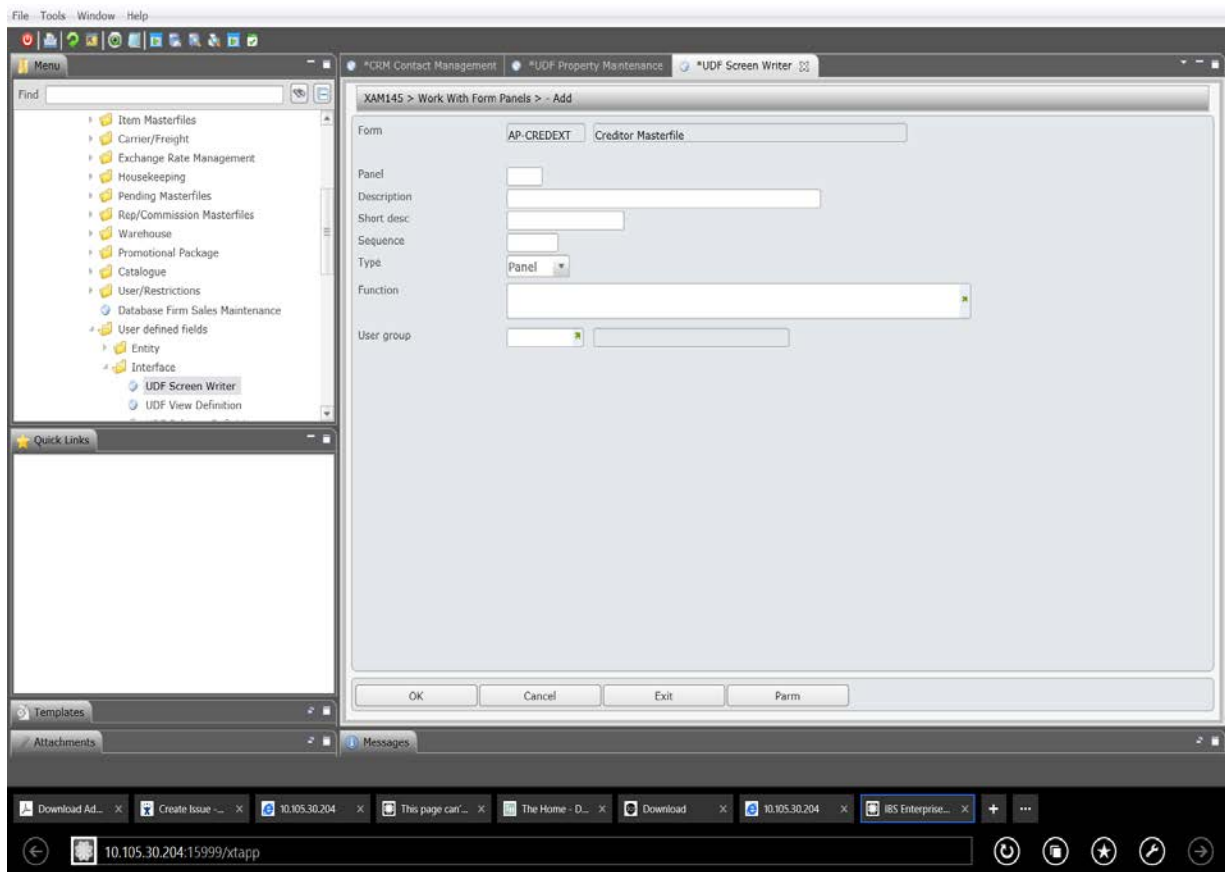
Creates a new panel or function for this form.

Header

Takes you back to the header information

3. Click **Add** to create a new panel.

XAM145 Work with Form Panels panel will be displayed in add mode.



Relevant fields

Panel

This is the panel identification number to be used by the user.

Description

This is the description for this panel.

Short desc	A brief description, maximum 15 characters, that displays on the screen.
Sequence	In what sequence should this panel be displayed? First, second, third, etc. Sequence identifies the order in which variables need to be passed into this form. The Sequence number defaults to be between current and previous sequence if the cursor is on an existing sequence.
Type	Valid types are Function and Panel.
Function	Context Context can be used to link a function. It can call another form or command when the cursor is positioned on this property and F2 is pressed during data entry. Note that the F2 context function will only work if data has already been keyed in this field. For example a context of #AUTHOR (*SAME) would call up the AUTHOR form, passing this property value as the variable (indicated by *SAME). Other variables could also be passed if desired. Function For a Function you are also prompted for the function command line. A hash (#) is used to indicate call of another form. Syntax for passing variables and is shown in the example. #FORM01 (&PARM01, &PARM02) Other commands could also be called as functions. Example: CALL PGM001 (&PARM01, & &PARM02)
User group	User access group can be entered for the panel to restrict access to only users in the group code.

4. Click **OK** to confirm and you are returned to the previous screen displaying the list of panels and functions.