

---

# XAM130 Work with Entity Details

---

*Overview*      This program allows you to work with Entities.

---

## Examples

This section illustrates examples concerning:

[Example 1: Work with Entity Details](#)

---

### Example 1: Work with Entity Details

1. Select option **Database Management** from **Distribution** menu.
2. Select **UDF Entity Maintenance** from **User Defined Fields**.

**XAM120 Work with Entity** panel will be displayed.

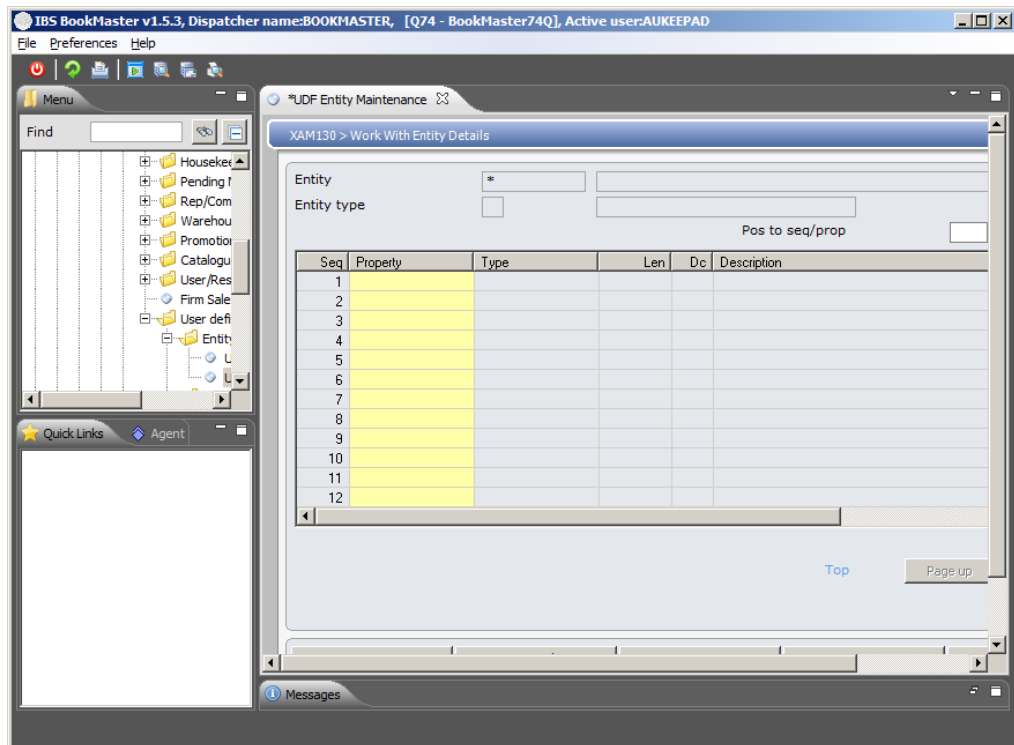
3. Select **Add** to create a new entity

**XAM120 Work with Entity** panel will be displayed in add mode.

4. Enter the **Entity ID** and **Description**.
5. Click **OK**

**XAM130 Work with Entity Details** panel will be displayed.

**Note** To maintain entity details for an existing entity, select the entity and right click **Detail**.



## Functions

**Ins**

To insert a property before the current line. This is used once properties have been added to an entity. It can be used to move the position of a property. Place the cursor on the property and click **Ins** for a new line to appear above the existing property.

**InsNew**

Is used to add a new Property to the Property as well as attaching the property to the Entity.

**Delete**

To delete an Entity.

## Relevant fields

**Ky**

The Ky column allows selection of one or more properties which make up this entity. Key fields are always mandatory. This links the main file that is being used. Example: DSCM00P Customer Masterfile.

**M**

The M column allows you to flag some properties as mandatory entries for this entity.

**Occur**

This shows how many values allowed for this property.

**Linkage 1**

Linkage fields allow connection of this data back to a base TMS file/field. The data is not stored again, but simply references to that base data. At present linked fields only allow retrieval/display of data, but not maintenance via Extended database. Example: **APCM00P** Creditor Masterfile