

---

# XAM120 Work with Entity

---

## Overview

This program allows you to maintain entities. Entities are a user defined label for a group of fields to be added to the database. Example: a new table.

---

## Examples

This section illustrates examples concerning:

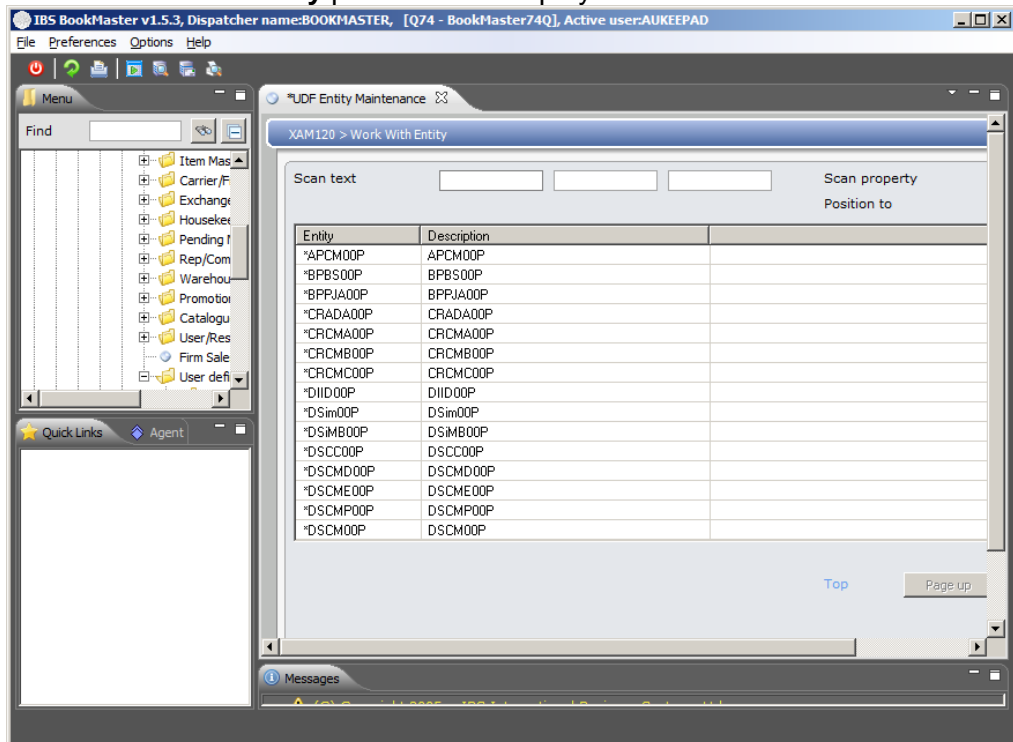
[Example 1: Add an Entity](#)

---

### Example 1: Add an Entity

1. Select option **UDF Entity Maintenance** from Base Modules>Distribution>Masterfiles>Database Management> Database Management>User defined fields>Entity menu.

XAM120 Work with Entity panel will be displayed.



## Options

[Details](#)

Displays the maintenance screen for Entity Details.

[Header](#)

Accesses the description header.

[Copy](#)

Copies the selected entity information into a new entity.

[Delete](#)

Deletes the entity. However if any properties are attached,

Inquiry  
Entry

they must be deleted first.

Displays the Entity Details.

Accesses the data entry screen to maintain data in this entity. This is a handy tool for entry of data on entities which are to be used as validation tables. **Note 1:** that this should not be used for entities which are also defined as properties with an Entity data type, as that would cause key mismatch problems. **Note 2:** that Detail and Entity options are not available for base Bookmaster files (Identified with '\*' prefix, and has entity type of 'D'). **Note 3:** Entry option also not available for 'Function entities ('@' prefix and entity type 'F').

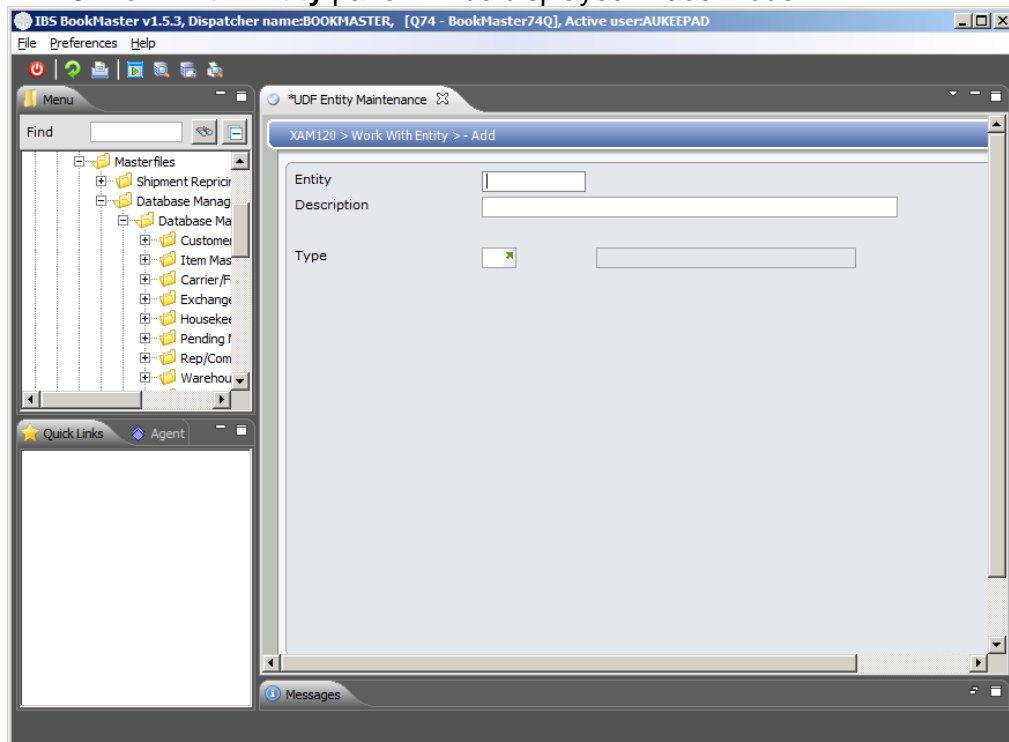
## Functions

### Add

Add a new Entity.

2. Select **Add** to create a new entity.

**XAM120 Work with Entity** panel will be displayed in add mode.



3. Enter the **Entity ID** and **Description**.

Type – U = UDF data. D= Database (base IBS file) F= Function, I= Index (future release) as defined in \*\*\*\*\*/EP-ENTYP.

4. Click **OK**

**XAM130 Work with Entity Details** panel will be displayed.