
WIM500 Background Job Manager

Overview

This program is used to manage the background jobs, stock replenishments, interface with 3rd party software and deal with suspended web orders. It is possible to run or hold these jobs simultaneously or each job can be dealt with individually as and when required.

The panel will display current job status and data queue library the status applies to. The status can be 1=Run or 2=Hold.

Jobs managed by this program are defined in the control file TMSWH/WI-QUEUE with the initial value set up.

Examples

This section illustrates examples concerning:

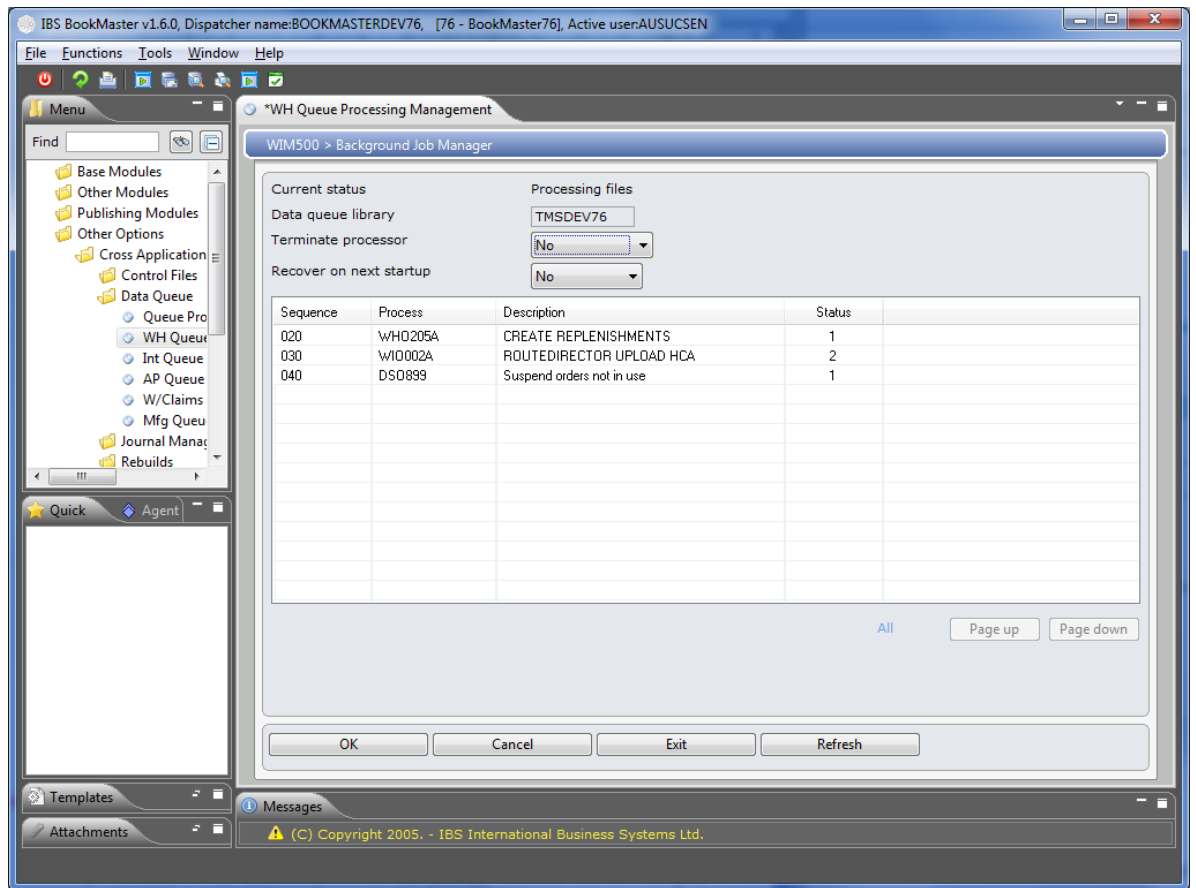
[Example 1: Activate/deactivate background jobs](#)

Example 1: Activate/deactivate background jobs

This example describes how to activate or deactivate background jobs.

1. Select option **WH Queue Processing Management** from Other Options> Cross Applications Support> Data Queue menu.

WIM500 Background Job Manager panel is displayed.



Options

Run

Use this option to run and activate a job.

Hold

Use this option to deactivate a job by putting it on hold.

Relevant Fields

Terminate/
Activate
Processor

This determines whether to activate the processor. Valid choices are:

0=No or 1=Yes. Once the processor has been activated this field will change to terminate processor to enable you to stop the processor.

- Run or hold jobs appropriately by selecting the relevant option.

Note Initial value set in TMSWH/WI-QUEUE control file is overridden by the choice user make in the above step.