
WHM080 Warehouse Order Maintenance by Pick Key

Overview

This program allows to work with warehouse orders by picking key and warehouse status like: A = Available To Process, C = Transaction Complete, P = Picker Assigned, R = Replenishing, T = Transmitted To W/H, W = Available To Warehouse

Examples

This section illustrates examples concerning:

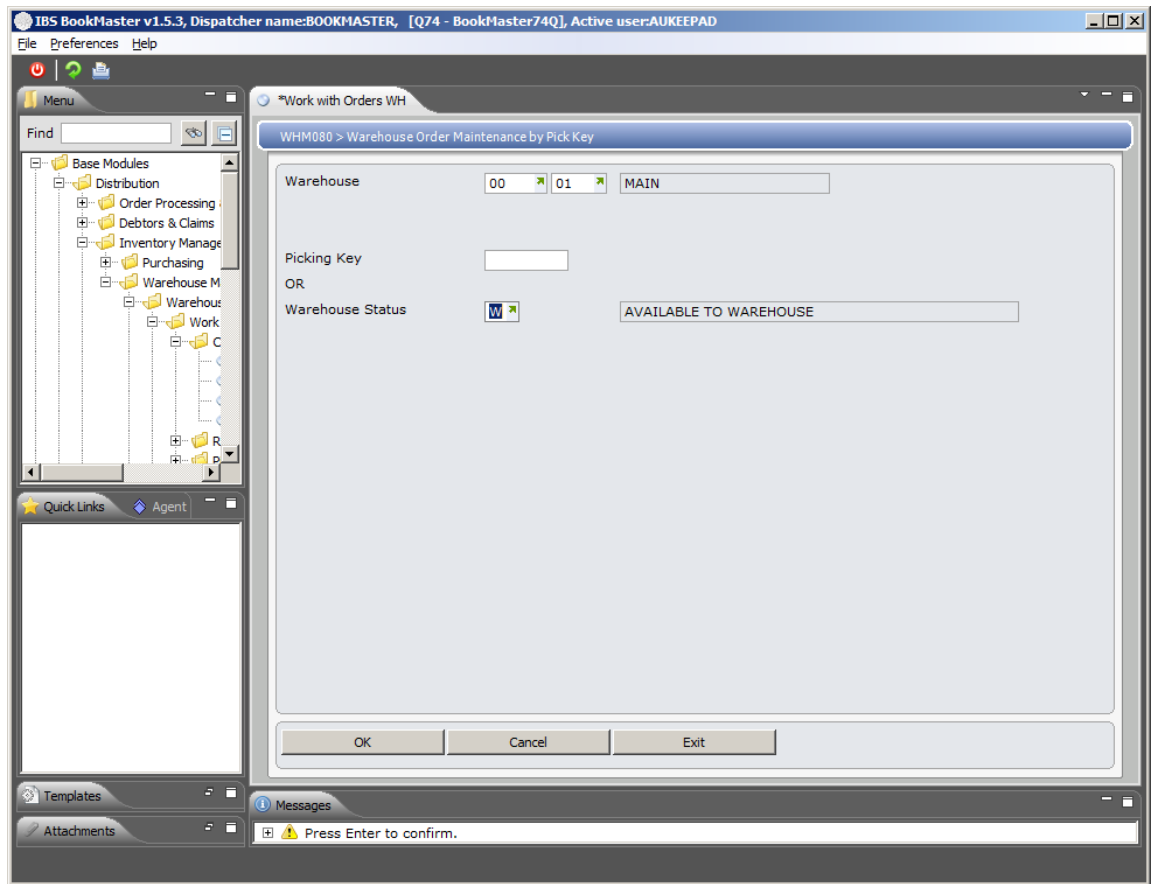
[Example 1: Display Warehouse Order Details by Warehouse Status](#)

Example 1: Display Warehouse Order Details by warehouse details

This example describes how to select pick plan.

1. Select option **Work with Orders WH** from Base Modules> Distribution> Inventory Management> Warehouse Management> Warehouse Control> Work Management> Control menu.

WHM080 Warehouse Order Maintenance by Pick Key panel is displayed.



Relevant Fields

Warehouse

The Warehouse code is made up of warehouse location and branch code. The default is set up in **TMSWH/WH-DFT** and can be changed if required.

Picking key

In Release Orders to Pick, the Picking Key is the Picking Slip Number.

In Work with Orders, a valid Picking Slip number can be selected or left blank to select the order status instead.

Order status

Order status

In Build Order Replenishment W/F, this order status is mandatory. This relates to records with the status of **W**=Available for Warehouse.

Valid statuses are:

D=In pick only

K=K-In progress and D-in pick

P=P-Pending, K-In progress and D-In pick.

Replenish for orders

In Create Replenishment Run, a choice can be made of how to replenish an order:

N=Replenish all titles in that warehouse location. Titles for replenishments are not from orders. This uses **TMSWH-PUT-**

FULL and TMSWH-RULE-RPL.

D=Replenish orders where orders in pick are greater than available.

K=Replenish titles where orders in process are greater than available.

2. Enter warehouse and warehouse status and click **OK**.

Note To display inquiries/warehouse order details by pick key, select the title and click on the corresponding option.

WHM080 Warehouse Order Maintenance by Pick Key panel is displayed.

IBS BookMaster v1.5.3, Dispatcher name:BOOKMASTER, [Q74 - BookMaster74Q], Active user:AUKEEPAD

File Preferences Help

Menu

Find

Base Modules

- Distribution
- Order Processing
- Debtors & Claims
- Inventory Manage
- Purchasing
- Warehouse M
- Warehouse
- Work
- C
- R
- D

Quick Links

Agent

Templates

Attachments

Messages

Work with Orders WH

WHM080 > Warehouse Order Maintenance by PickKey

Warehouse: 00 01 MAIN MAIN WAREHOUSE

Warehouse Status: W AVAILABLE TO WAREHOUSE

Pos to:

Pick Key	Typ	Date	Customer Number	Customer Name	Total Amount	Tc
00016506	A		300116	Mrs Anna Mendes	229.69	
00016509	A		300116	Mrs Anna Mendes	489.54	
00016843	A		000135	Dymocks Head Office	110.00	
00016844	A		100206	Dymocks Head Office	259.88	
00016850	A		300121	Carlisle Middle Scho	.00	
00016841	C		300121	Carlisle Middle Scho	61.00	
00016324	A		100500	University Co-Operat	25.35	
00016325	A		100500	University Co-Operat	25.35	
00016494	A		300116	Mrs Anna Mendes	34.10	

All Page up Page down

OK Cancel Exit

Options

Orig
Document

Access DSI120 Transaction Inquiry to inquire on transaction details.

Display
Header

Access DSI125 Transaction Header Inquiry to inquire on transaction details.

WHS
Document

Access WHI120 Order Inquiry by Pick Key to inquire on order details like Pick Key, Order Category, Scan Check Category, Floor spot code, Preferred Delivery date.

Containers

Access WHI160 W/H Order Inquiry by Container to inquire on order details.

Relevant Fields

Pick key

In Release Orders to Pick, the Picking Key is the Picking Slip

Number.

In Work with Orders, a valid Picking Slip number can be selected or left blank to select the order status instead.

Date Enter the completed date of transactions or leave as the defaulted current date.

Customer number A Region Description that can be included in the definition.
For example: '100800' = David Jones

Total amount The total value of the order displays.

Total Weight The total weight of the order in kilograms displays.

Order details get displayed.