
WHM060 Warehouse Run Control

Overview

This option Warehouse Run Control, displays by run the warehouse movement transactions both completed and in progress for all warehouse runs outstanding.

When a run is created using the Pick plan selection option, the run details can be viewed from this screen.

This option should be used by the warehouse operations manager as an overview of the work-in-progress in the Warehouse.

Explanation

Reactive Replenishments

Reactive replenishments (not pro-active replenishments) are generated by the warehouse background processor to enable merging of replenishment demand, that is, rather than replenishing the same product multiple times for different picking runs, consider existing outstanding replenishment activity and generate transactions to address the balance. Merging is available only in warehouses using RF for movements (**TMSWH/USE-RF**) and where merging is explicitly requested (**TMSWH/MRG-RPL**).

TMSWH/MRG-RPL determines whether to merge reactive replenishments or whether to hold a merged run. When replenishments are required for the selected warehouse and its not to be merged with other picking run (as per **TMSWH/MRG-RPL**), the system will generate replenishment transactions immediately. Optional merging of reactive replenishments minimises the time spent by staff picking from bulk. Merging of replenishments ensures that each title is picked from a bulk location once only, satisfying total order requirements.

Also, based on **TMSWH/PCK-HOLD**, it is possible to split a picking run into those orders immediately pickable (**P** status) and those awaiting replenishment (**R** status). The background processor then generates the replenishment activity into a separate new or existing "M"erged run (if merging is enabled) or as part of the R-run (if merging not enabled). If no M-run is generated or the R-run contains no replenishment activity, then the background processor is not active.

Replenishments are merged by run priority and device type. Merging considers excess quantity on existing transactions but does not increase the 'to be replenished' quantity (requested quantity) of an existing movement. So it is possible that the same product may be 'pulled' from the same location multiple times in a single M-run.

Where the same product is being replenished by runs of differing priority for the same device type, the transaction is linked to the run with the highest priority. For example, item A is already being replenished for 100 units (one carton) for a priority 5 order requiring only 40 units. If a priority 3 order is released to pick and requires 50 units to be replenished, then that 50 is already satisfied from the excess of the existing transaction. Merging identifies the highest priority order and forces the replenishment transaction to

run at that priority – in this case 3. If no existing priority 3 M-run exists for this device type, the background processor will generate a new M-run.

An M-run remains open whilst transactions are outstanding and the background processor may add transactions with every Release to Pick.

On a technical level, the system uses file WHRQI to summarize the replenishment demand by product, device type and run priority, and WHRQD to identify the picking slips themselves. WHO210 builds WHRQI and WHRQD and WHO205 uses WHRQI to create/merge the M-runs.

The warehouse background processor calls programs found in **TMSWH/WI-QUEUE** after the specified time delay. It must contain an entry for program WHO205 (Create Replenishments) even if the warehouse is not configured to perform replenishment activity because it is this job that also reverses orders if location stock cannot be found. This background processor is submitted to job queue TMSJOBQ (via job description TMSJOBQD) along with several other background processors so the job queue must allow sufficient Maximum Active jobs.

Whilst 'release to pick' still generates warehouse run number(s), it is also possible to process the transactions not by warehouse run number but rather by warehouse zone based 'release number'.

Warehouse Run Control

If RF is not being used (**TMSWH/USE-RF**) the replenishment report can be reprinted and movements confirmed. **HINT:** All warehouses should have an entry in this Control File. A generic entry may be used by entering **** under the warehouse heading.

The System caters for applying different putaway rules for Returns and Receipts by using the Generated Putaway columns: receipts putaway and returns putaway in **TMSWH/USE-RF**: This gives the user greater flexibility to choose between a putway list and using the RF device.

Example: A large shipment has been received and the warehouse management has chosen to use the RF devices for the putaway. The returns are small in quantity and therefore, the putaway list can be used.

TMSWH/RCT-RUN contains the Goods Inwards permanent run number, the run description and the default priority. This predefined run number (8 characters) is reserved for Receipts and Returns. This Run Number is user defined and should be specified outside the normal range of run numbers.

The warehouse defaults if setup in **TMSWH/WH-DFT**. If the warehouse run on the screen below is complete for all movements WHO226 completes the run.

If Cubing is in use, the cubing logic will be applied when this process is run. Refer to **Database Warehouse** for and overview of the Cubing functionality and the set up requirements.

Picking Slips can print if the Warehouse Run is at status **P**, yet picking slips have not been printed. This is used only when releasing Held picking runs from Run Control.

When printing picking slips, if the printing type is I (Immediate when available), generate picking slips by individual picking slip. If not I generate picking slips by run so they can be printed by run.

An invoice number is generated for all picking slips in the pick run. An invoice number will be allocated for all DC customers on **TMSWH/DSPINVP**, consolidation flag is X and status of order is D.

De-select run

Note: If using paper picking slips it is possible to de-select the run even though the picking slips have printed. In this case picking slips printed should be destroyed as the system will not allow them to be confirmed.

A run can be reversed even though an order on the run has been completed. The system ignores the completed orders when validating for the reverse process and does not check the 'completed' figures against the run.

Reversing of a warehouse run is not allowed if any orders in the run have started picking and the status is A= "Waiting for Invoice to Print" in the Warehouse Transaction File. If RF picking is used and assigning is done for individual zones instead of the entire picking slip, Warehouse Transaction File will have the Picked status once the picking has started.

Putaway runs are not allowed to be reversed.

Examples

This section illustrates examples concerning:

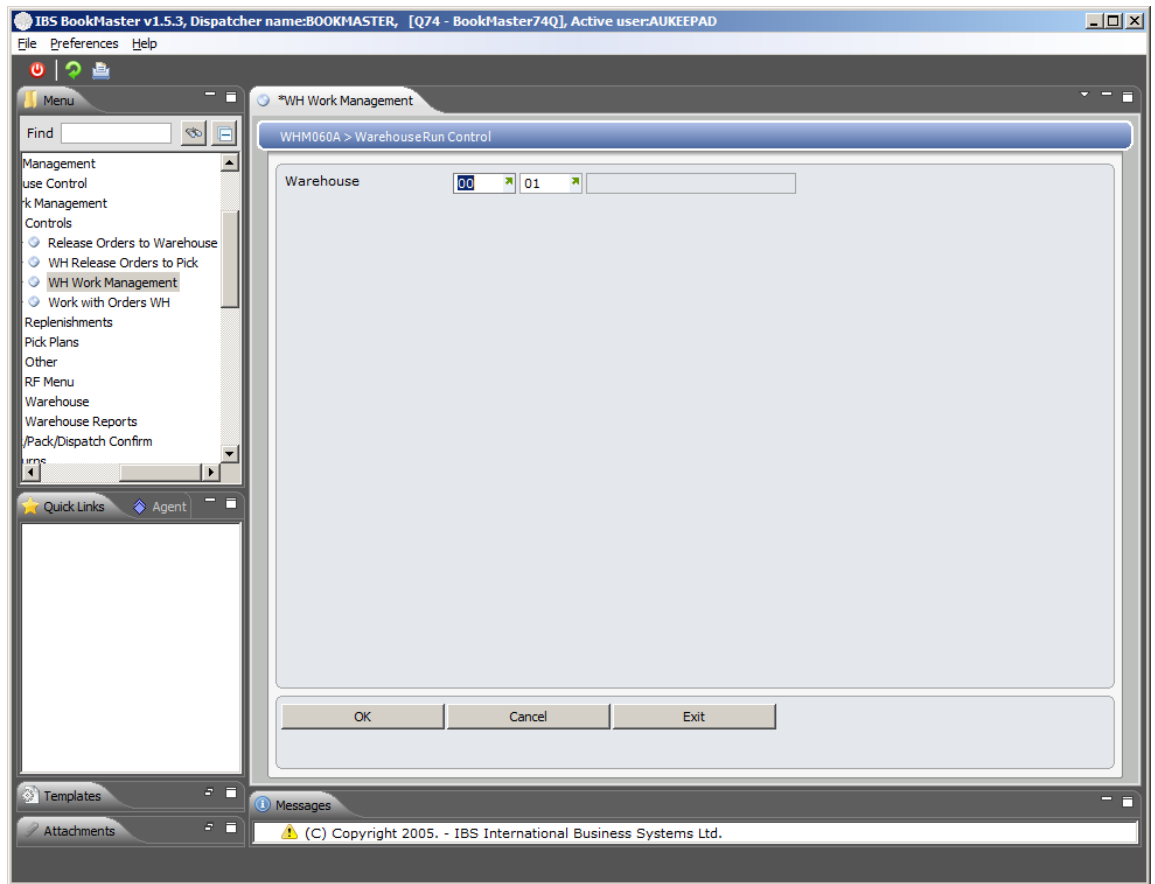
[Example 1: Maintain Warehouse Run Control Details](#)

Example 1: Maintain Warehouse Run Control Details

This example describes how to maintain warehouse run control details.

1. Select option **WH Work Management** from Base Modules> Distribution> Inventory Management> Warehouse Management> Warehouse Control> Work Management> Controls menu.

WHM060A Warehouse Run Control selection panel is displayed.



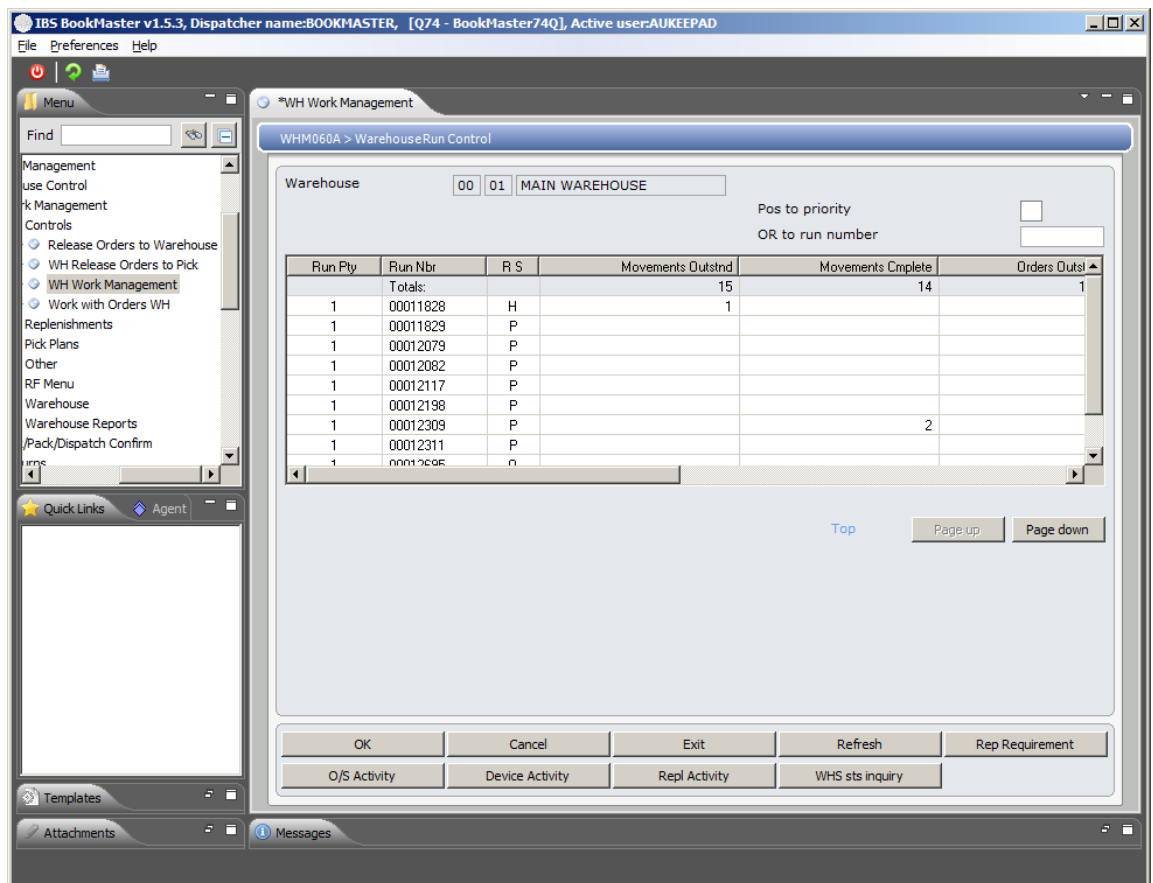
Relevant Fields

Warehouse

The Warehouse code is made up of warehouse location and branch code. The default is set up in **TMSWH/WH-DFT** and can be changed if required.

2. Enter valid warehouse and click **OK**.

WHM060A Warehouse Run Control main panel is displayed.



Options

Orders

Access WHI180 Warehouse orders by Run number to display warehouse order details.

O/S trans

Access WHI230 Transactions by Run Number to view outstanding transactions.

Completed trans

Access WHI230 Transactions by Run Number to view completed transactions.

Reprint

Click Reprint to allow the user to reprint the Replenishment Report for any run with the status of R or reprint the picking slips for runs with a status of P.

Confirm

Used to confirm the entry of the container for the Receipts/Putaway function. Access WHE050 Warehouse Movement Confirmation to confirm the warehouse movement.

Change

Access Warehouse run control to change run control details. It is used to view the orders or transactions on a run or make priority changes. Note: if the run status = M and the movement outstanding are greater than zero then it will not be possible to change the priority. This option is only useful for RF.

Hold

The Hold Option places the run on hold and the Run Status changes to H until released. No transactions are allocated to devices when the status is H. This option is used with RF processing and whether or not to merge replenishments and whether to hold a merged run is determined by the set up in TMSWH/MRG-RPL.

De-select run	The De-select run Option cannot be used unless a run is held (H) or is in progress. This reverses the status of the picking slips on this run from A to W. This action will remove the run from the Warehouse Run Control Screen and place it in the Warehouse Run selection screen. When reversing an order the system also clears the carton number on the Warehouse Transaction Header file (WHTRA00P), deletes picking related Container files (WHCA00P and WHCSC00P via WHO480) and deletes all containers for an order regardless of status.
Display	Access Warehouse run control to display run control details.
Release	<p>This option is used when a run has been placed on hold to change the run priority or to prevent the RF device from picking that run for a particular reason.</p> <p>Orders are released to pick stage if they are ready to pick.</p> <p>The Release Option releases a selected run for picking</p>

Function

Rep requirement	Access WHI280 Replenishment Requirement Inquiry to view replenishment requirement.
O/S Activity	Access WHI110 Warehouse Activity Outstanding to view O/S activity details.
Device Activity	Access WHI190 Warehouse Activity by Device Type to view the warehouse activity details.
Repl Activity	Access WHI270 Replenishment Activity Inquiry to view replenishment inquiry.
WHS sts inquiry	Access WHI060 Warehouse Status Inquiry to view warehouse status.

Relevant Fields

Run nbr	The run number generated by the Release Order to Pick process displays. This could be a Replenishment Run or a Warehouse Movement run.
Run status	<p>The current status of the run displays:</p> <p>C Completed: displays if partial run is complete.</p> <p>H Held: Check to ensure that all incomplete transactions change to status H for that particular run number used with RF device.</p> <p>M Merged replenishing, replenishments are merged from different runs per run priority, for reactive replenishments only.</p> <p>P Picking, currently being picked.</p> <p>Q Queued for dispatch.</p> <p>R Replenishing: Replenishments required before stock can be picked.</p> <p>T Putaway: Returns and Receiving processing.</p> <p>U Updating: Intermediate stage of processing.</p>
Movements outstand	The total incomplete warehouse transactions outstanding for the run display. The total of the movements outstanding for all runs

	displayed is given at the bottom of the screen.
Movements complete	The total completed warehouse movements for the run displays. The total of the movements completed for all runs displayed is given at the bottom of the screen.
Orders outstand	The total number of orders outstanding for the run display. The total number of orders outstanding for all runs displayed is given at the bottom of the screen.
Orders complete	The total number of completed orders for the run display. The total number of orders completed for all runs displayed is given at the bottom of the screen.
Lines outstand	The total number of incomplete outstanding lines for the run display. At the bottom of the screen the total number of lines outstanding for all runs is displayed.
Lines complete	This is the total number of completed lines for the run. The total number of lines completed for all runs displayed is given at the bottom of the screen.
Units outstand	The total number of units outstanding for the run displays. The total number of units outstanding for all runs displayed is given at the bottom of the screen.
Units complete	This is the total number of units complete for the run. The total number of units completed for all runs displayed is given at the bottom of the screen.

3. Select a run number and Click **Change**.

Note To perform inquiries/ reprint picking slips for runs/ warehouse movement confirmation/ place the run to hold/ deselect run/ display run control details/release run for picking, select the title and click on the corresponding option.

WHM060A Warehouse Run Control panel is displayed in change mode.

IBS BookMaster v1.5.3, Dispatcher name:BOOKMASTER, [Q74 - BookMaster74Q], Active user:AUKEEPAD

File Preferences Help

Menu

Find

Management
use Control
k Management
Controls
Release Orders to Warehouse
WH Release Orders to Pick
WH Work Management
Work with Orders WH
Replenishments
Pick Plans
Other
RF Menu
Warehouse
Warehouse Reports
Pack/Dispatch Confirm

Quick Links Agent

Templates

Attachments

Messages

WHM060A > WarehouseRun Control

Warehouse 00 01 MAIN WAREHOUSE

Run 00011828 SELECT

Run priority 1 (Valid values : 1-9)

Run status H HELD

Pick plan code 00011828

Restrict to dev type PPR PAPER

	Completed	Total
No of Replenishments		1
No of Pick Orders		
No of Pick Lines		
No of Pick Units		

	Date	Time	User
Run Creation	14/01/10	9:12:01	AUANNSTE
Replenished			
Picked			
Last Changed	25/02/10	14:30:32	AUPETROB

OK Cancel Exit

Relevant Fields

Run priority

In Release Orders to Pick, the entry in this field defaults from Order Category Maintenance but can be overridden to change the sequence in the Warehouse Run Control. Runs are placed in order of priority, including Cleanup Runs and Order Replenishment Runs, the highest being 1. The lower the priority number, the higher the priority.

Run number

The run number generated by the Release Order to Pick process displays. This could be a Replenishment Run or a Warehouse Movement run.

Run status

The current status of the run displays:

C Completed: displays if partial run is complete.

H Held: Check to ensure that all incomplete transactions change to status H for that particular run number used with RF device.

M Merged replenishing, replenishments are merged from different runs per run priority, for reactive replenishments only.

P Picking currently is being picked.

Q Queued for dispatch.

R Replenishing: Replenishments required before stock can be picked.

T Putaway: Returns and Receiving processing.

U Updating: Intermediate stage of processing.

Creation date	Transaction document creation date.
Warehouse	The Warehouse code is made up of warehouse location and branch code. The default is set up in TMSWH/WH-DFT and can be changed if required.
Pick plan code	When selecting a Pick Plan for maintenance, either one plan is selected or the field is left blank to select all current pick plans. Plan codes are specified when generating a plan.
Restrict to device type	In Release Orders to Pick for RF warehousing, the default in this field is taken from Order Category Maintenance but can be overridden if required. This field is used to assign the run to a device type which is used for picking the goods.
Number of replenishment No of pick orders	<p>This is the total number of replenishments done.</p> <p>Maximum no of orders for all selected orders</p> <p>In Release Orders to Pick this is one of five Optional Limit fields used to restrict the number of orders released to pick. When the total number of orders released to pick equals this limit, the current order continues onto the picking run but no further orders are released.</p> <p>Maximum no of orders</p> <p>In Batch Document Print this is one of five Optional Limit fields used to restrict the number of orders released to the warehouse. When the total number of orders released to the warehouse equals this limit, no further orders are released.</p> <p>NB Valid only when generating from a Standard Plan.</p>
No of pick lines	<p>Maximum no of lines for all selected orders</p> <p>In Release Orders to Pick this is one of five Optional Limit fields used to restrict the number of orders released to pick. When the total number of order lines released to pick equals or exceeds this limit, the current order continues onto the picking run but no further orders are released.</p> <p>Maximum no of lines</p> <p>In Release Orders to Warehouse this is one of five Optional Limit fields used to restrict the number of orders released to the warehouse. When the total number of order lines already released to the warehouse equals or exceeds this limit, the current order continues through to the warehouse but no further orders are released.</p> <p>NB Valid only when generating from a Standard Plan.</p>
No of pick units	<p>Maximum no of units for all selected orders</p> <p>In Release Orders to Pick this is one of five Optional Limit fields used to restrict the number of orders released to pick. When the total number of units released to pick equals or exceeds this limit, the current order continues onto the picking run but no further orders are released.</p> <p>Maximum no of units</p>

In Batch Document Print this is one of three Optional Limit fields used to restrict the number of orders released to the warehouse. When the total number of units already released to the warehouse equals or exceeds this limit, the current order continues through to the warehouse but no further orders are released.

NB Valid only when generating from a Standard Plan.

4. Make required priority changes and click **OK**.

Cross Reference

- WHE050A – Non-RF movement confirmation