
WHE140 Warehouse Stock Count

Overview

This program performs cycle counts of a selected location and puts in discrepancy any stock that is not counted or over counted. **TMSWH/SADJ-DFT** is used to determine the stock adjustment code to be used in this menu. The parameter on the menu is used to link the code.

Explanation

When the operator finishes stock counting for the location, the system will ask whether there are more items in the location.

- If more items, then writes off/up only counted items from Location ISBN File.
- If no more items, confirms to the operator that uncounted items on Location ISBN file will be written off. Write off uncounted items if they want to, and write off/up counted items.

For some movements, we wish to make the putaway movement by container, but require the stock to then be stored as units, rather than remaining in the carton quantities in which they were picked up. The existing putaway action code P will retain the carton quantity, but using code I would require individual putaway confirmations per item. This new flag, single only, on the zone definitions file will be similar to a "P" however, will break the carton into singles at putaway time,

When the transaction status turns to C update is complete, the user ID date and time stamp is updated into the Warehouse Movements File.

- Validation is performed on the item hierarchy for the Item location extension.
- Retrieves the physical warehouse
- Includes Alt item, Barcode and TUN lookup for item

Examples

This section illustrates examples concerning:

[Example 1: To Take Stock Count from Selected Location](#)

[Example 2: To Take Inventory Count from Selected Location](#)

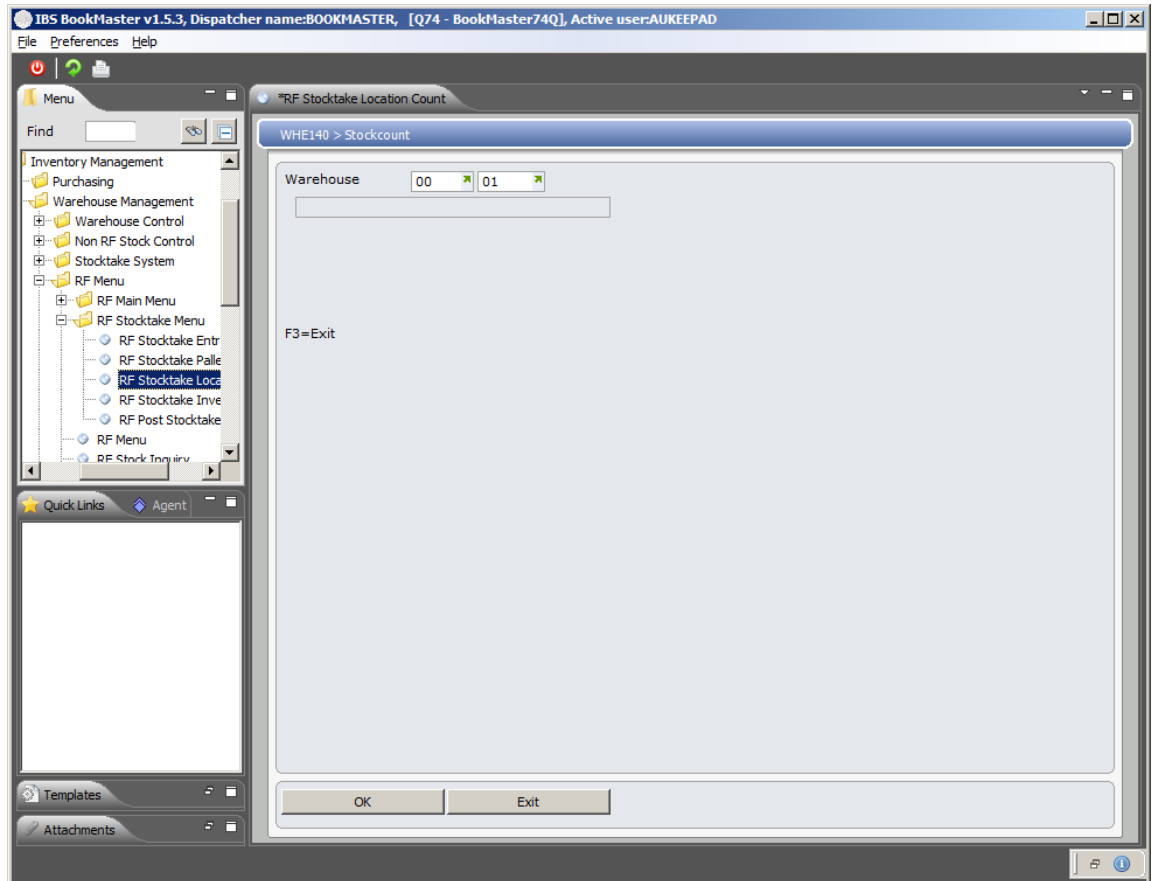
[Example 3: To Take Post Stock Count from Selected Location](#)

Example 1: To Take Stock Count from Selected Location

This example describes how to count the stock from particular warehouse location.

1. Select menu RF Stocktake Location Count from Base Modules> Distribution> Inventory Management> Warehouse Management> RF Menu> RF Stocktake Menu.

WHE140 Stockcount panel is displayed.

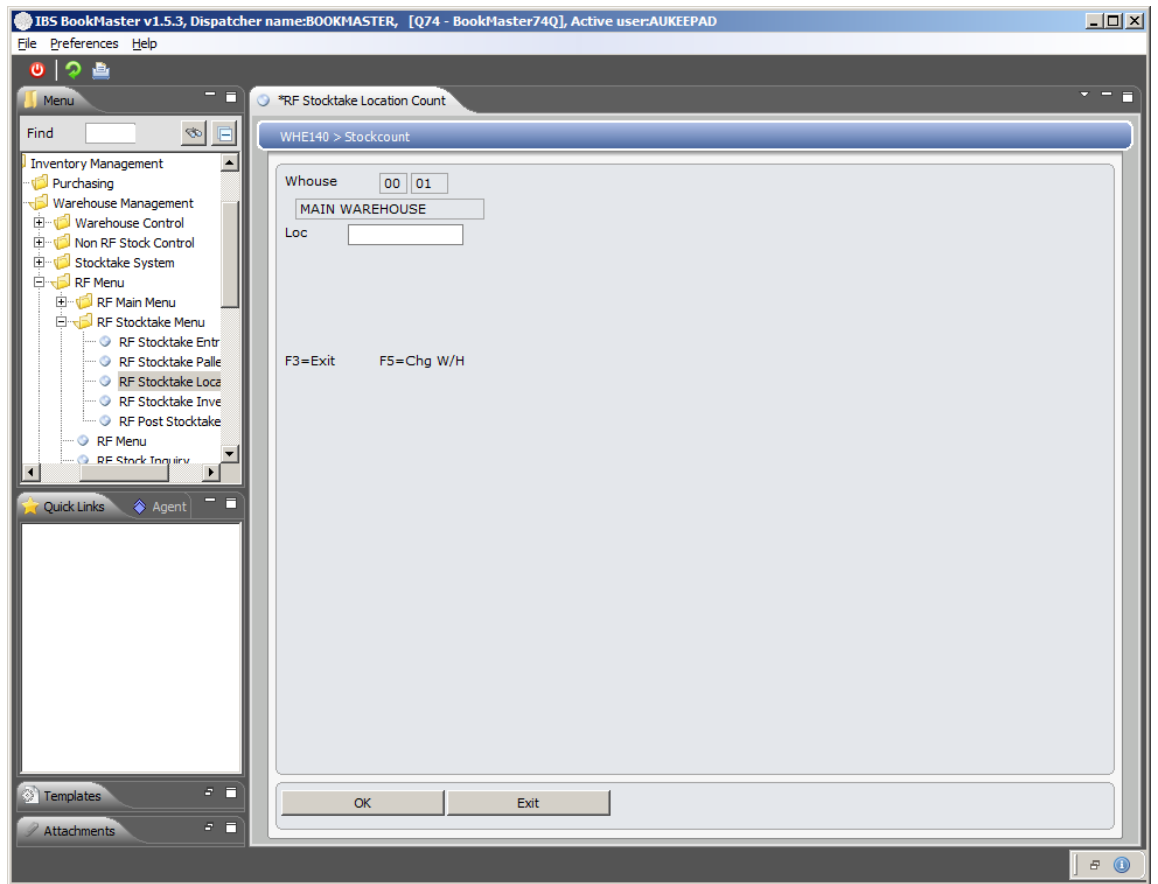


Relevant Fields

Warehouse

Name of the warehouse from whose location, stock count is to be done.

2. Enter or scan the warehouse. Click **OK** to confirm the selection. Following panel is displayed.



Functions

Chg W/H

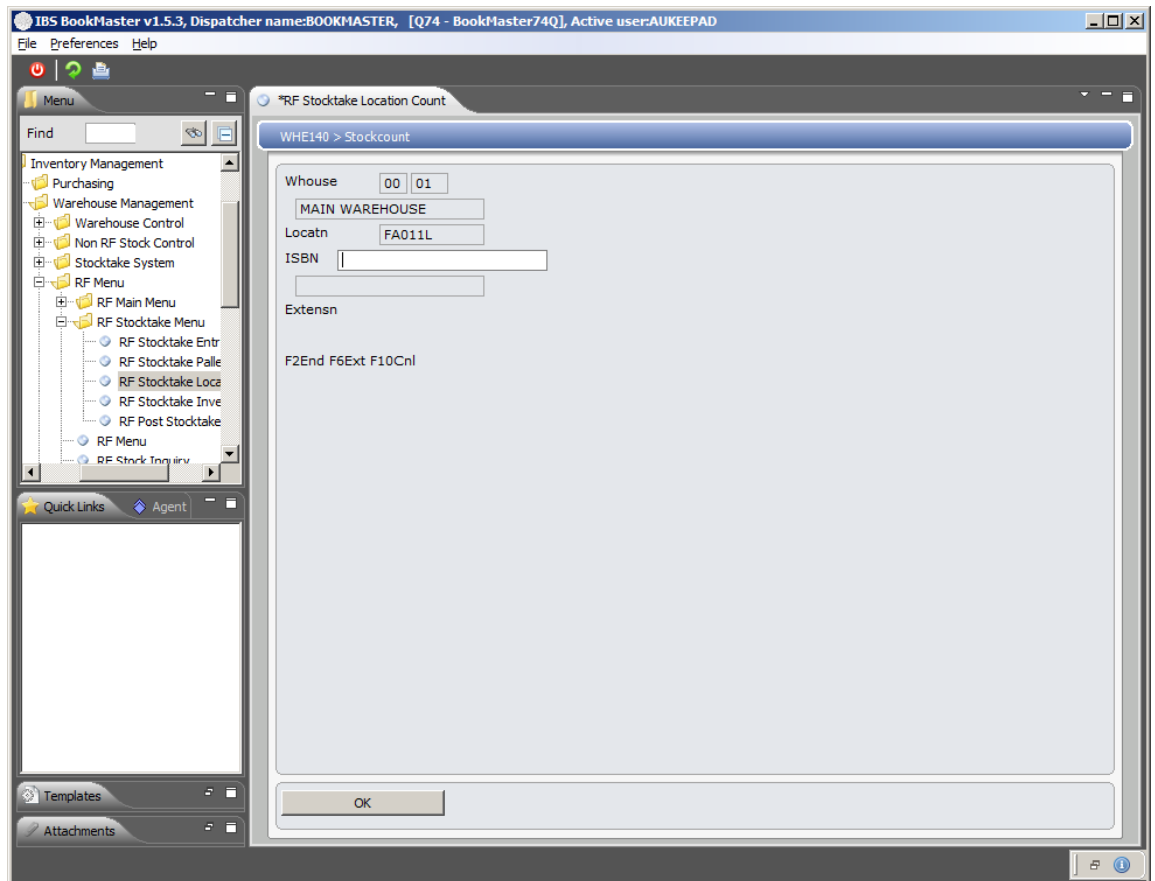
This function is used to change previously selected warehouse.

Relevant Fields

Loc

Specify location from selected warehouse from where stock count is to be taken.

3. Scan/Enter warehouse location. Click **OK** to confirm warehouse location selection. Following panel is displayed.



Functions

End

This function is used to end the count. This will returns the operator to the input panel for the item.

Ext

This function is used only if item extension is to be used.

Relevant Fields

Item

This is item which is to be counted.

4. Scan/Enter item to be counted. Click **OK** to confirm the selection.

Relevant Fields

Ctn Qty

Total number of items available or counted in a single carton.

NoOfCtn

Total number of cartons counted in the selected warehouse location.

5. Scan/Enter carton quantity and total number of cartons. Click **OK** to confirm the selection. System will prompt for the next item in the location to be counted. Once all items have been counted click function **End** to end the count.
6. Indicate whether there are any more items in this location to be counted by selecting **Y** or **N** to complete adjustment.

If **Yes** is selected and only 2 out of 5 item in this location have been counted then system will adjust only 2 items counted.

If **No** is selected and only 2 out of 5 items in this location have been counted then system will write off any other stock and adjust the counted stock.

If **Yes** then a discrepancy transaction is generated with the stock adjustment code that was defined in **TMSWH/SADJ-DFT** and matching the menu parameter for this stocktake count type. A transaction is generated in the warehouse stock discrepancy file and the warehouse movements file. The discrepancy for those items can then be corrected in the discrepancy process.

If **No** then no discrepancy is generated.

Note that this stock has been placed in reserved discrepancy field.

Example 2: To Take Inventory Count from Selected Location

This example describes how to take inventory count from particular warehouse location.

1. Select menu RF Menu from main menu Warehouse Management of Distribution menu. Select menu option Inventory Count.

Process is same as explained in [Example 1: To Take Stock Count from Selected Location](#). Only parameters are different. The process is completed exactly in same way as explained above.

Example 3: To Take Post Stock Count from Selected Location

This example describes how to take post stock count from particular warehouse location.

1. Select menu RF Menu from main menu Warehouse Management of Distribution menu. Select menu option Post Stock Count.

Process is same as explained in [Example 1: To Take Stock Count from Selected Location](#). Only parameters are different. The process is completed exactly in same way as explained in example 1.