
WHE108 Pre-dispatch Confirmation

Overview

This function is used to scan cartons as they come down the picking conveyor line to check if the order is fully picked. Labels must be printed at the Picking Confirmation stage of Order Processing so that the cartons can be labeled. Label details are then either scanned by barcode scanners or RF equipment or entered on the screen, depending on the system setup. The purpose of this option is to ensure all cartons for one order are dispatched together. Multiple carton orders are kept on hold awaiting the rest of the order if all cartons do not arrive together. Cartons are given a status depending on what stage of the picking/packing process they have been through. Carton status codes are: O for Opened and P for Packed.

Explanation

When accumulating weight for a picking slip, if not all cartons on the picking slip have actual weight yet, then rather than having a partial Actual Weight total, use sum of calculated weights.

NB. Carton calculated weight must be accumulated as the carton is 'packed' (eg. during RF picking or interface upload.).

Example: where the invoice is printed before all cartons have been weighed. In this case, cubing pre-calculates carton weights (including carton type packaging), and recalculates during carton confirmation. So by printing the total calculated weight on the invoice, at least that can be reconciled to the container enquiry. When we printed partial Actual Weights, we could not reconcile this to anything.

When processing dispatch 2 at the last carton of the picking slip, if any cartons for the picking slip did not have actual weight, update actual weight on those cartons with calculated weight and recalculate total weight on invoice on the Distribution Header file summing container actual weight on the Container Master file.

When determining the last container for the order, if not all picking transactions on the order are completed, regards as it is not the last container. This will allow for non-cubed orders to dispatch via this program.

If it is set to skip Dispatch 1 according to TMSDS/PRT-LAB, TMSDS/PRT-INV, TMSDS/PRT-CON & TMSWH/ENT-WGHT, and it is called with dispatch stage 1, stop processing as this program processes under assumption there is no dsp 1. Determine if a picking device for an order is paper or RF, and look up TMSDS/PRT-LAB & TMSDS/PRT-CON accordingly.

An example of using Carton Dispatch Stage 1 is:

A customer's order consists of three cartons. The forklift or trolley has open cartons on it, the status of these cartons is O for Open. When two cartons are full, these are scanned (or details are entered) and placed on the conveyor line 1. Once scanned or recorded as having been packed, the status of these two cartons is now P for Packed.

At the Dispatch Point 1, the two packed cartons are scanned again to see if they can be dispatched. But, because the system knows this order consists of three cartons, and one carton still has a status of O for Open, a large N for No will display on the screen. This indicates that these two packed cartons cannot be dispatched as there is one still outstanding. The status of the packed containers changes to W for Waiting for other cartons. The operator then moves these packed cartons down the first conveyor line awaiting the last carton.

When the third carton is full, it will be scanned and placed on the conveyor line. At Dispatch Point 1 this carton is then scanned again, however this time the system will present a big Y for yes on the screen to let the operator know that the carton should be moved to the other conveyor line to be dispatched. Dispatching takes place at Dispatch point 2.

The operator will periodically scan the other cartons on the first conveyor line. This time a Y for yes will display when the two W status cartons are scanned and these cartons will be moved to the other conveyor line (Dispatch point 2). The status of all three cartons will change to L for Labeled indicating that the full order is ready for dispatch. TMSDS/PRT-CON 1 = Dispatch Stage 1

Pre-dispatch Confirmation

On the initial screen override the default warehouse if required.

The carton number will not be accepted unless it is entered in the thirteenth space in the field.

The carton number can be obtained from Container Details Inquiry WHI130.

At the bottom of the screen

(#) of cartons banked displays the number of cartons scanned (W=Waiting status) but awaiting the balance of cartons for an order to be packed.

(#) ready to dispatch displays the number of cartons that can be dispatched. This relates to the status W cartons with no other cartons in order status O=Open or P=packed.

Examples

This section illustrates examples concerning:

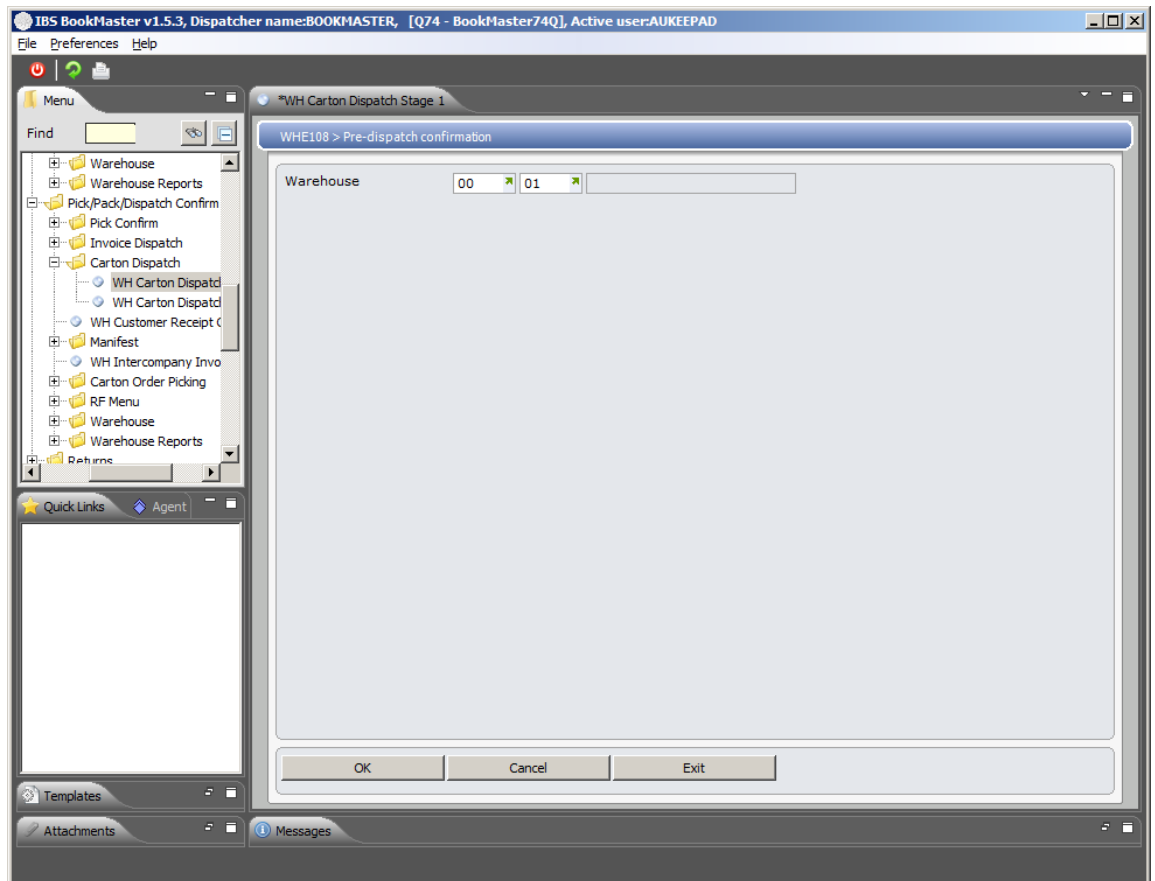
[Example 1: Pre-dispatch Confirmation](#)

Example 1: Pre-dispatch Confirmation

This example describes how to confirm pre-dispatch.

1. Select menu option **WH Carton Dispatch Stage 1** from Base Modules> Distribution> Inventory Management> Warehouse Management> Warehouse Control> Pick/Pack/Dispatch Confirm> Carton Dispatch menu.

WHE108 Pre-dispatch Confirmation selection panel is displayed.



Relevant Fields

Warehouse

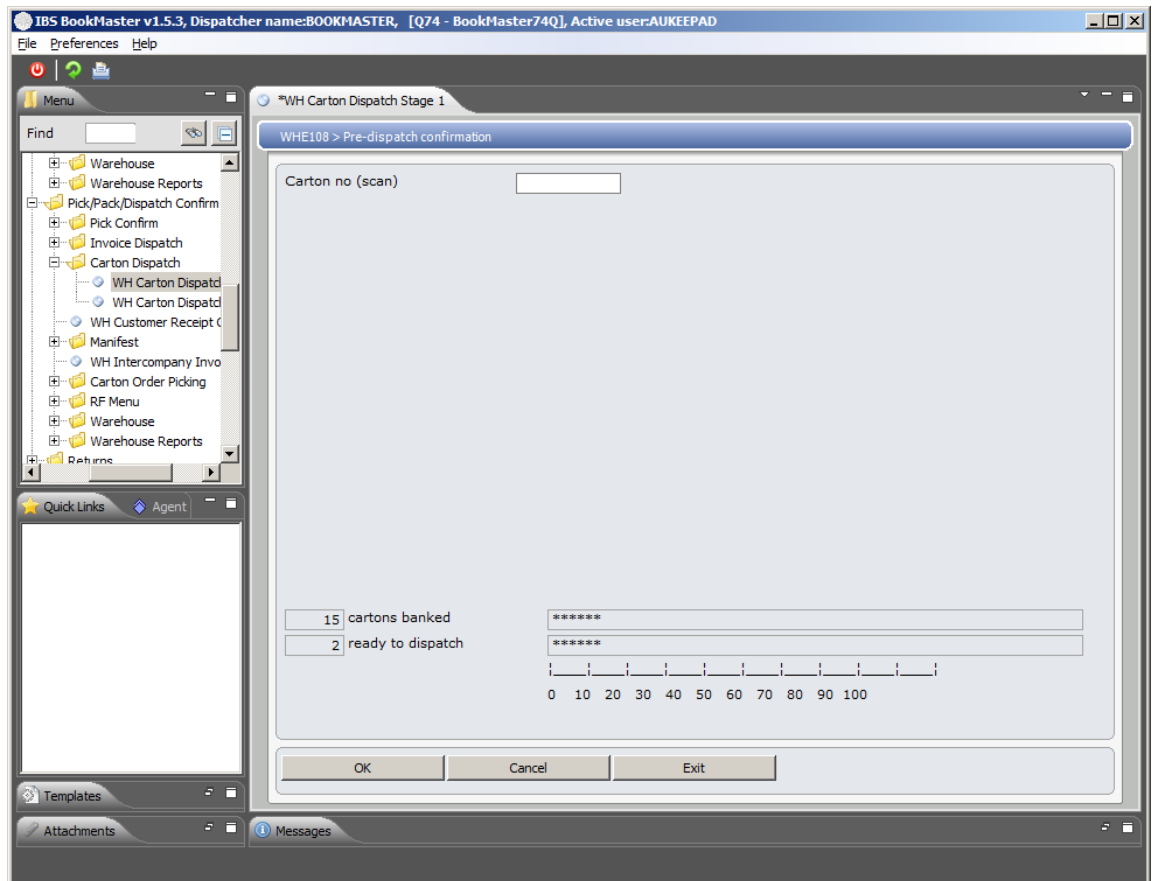
This code consists of a Warehouse Location (2 characters) and Branch Code (2 characters). In DSM280 this is the logical warehouse code and in DSM281 it is the Physical Warehouse code

Note: This code once created cannot be changed.

If when in Add mode an existing warehouse is selected, the system displays the following message: This warehouse already exists on the warehouse masterfile.

2. Enter valid warehouse and click **OK**.

WHE108 Pre-dispatch Confirmation panel is displayed.



Relevant Fields

Carton no

This is the carton for an order have now been scanned at Dispatch Point 1 meaning they are all packed and accounted for and ready for dispatch. The carton number can be obtained from Container Details Inquiry WHI130.

At the bottom of the screen

(#) of cartons banked displays the number of cartons scanned (W=Waiting status) but awaiting the balance of cartons for an order to be packed.

(#) ready to dispatch displays the number of cartons that can be dispatched. This relates to the status W cartons with no other cartons in order status O=Open or P=packed.

Graph, from (0) to (100)

A graph, from (0) to (100), will display the percentages of the above values.

3. Enter valid carton number and click **OK**.

Pre-dispatch get confirmed.

A Y will display on the screen when the system detects that all cartons for an order have now been scanned at Dispatch Point 1 meaning they are all packed and accounted for and ready for dispatch. The cartons will now have the status of L for Labeled.

An N displays if not all cartons are ready for dispatch.