
WHE081 Picking Container Audit Scan

Overview

This Picking Container Audit Scan process is used for audit control purposes, allowing all picking carton labels to be scanned before being released to the warehouse for picking.

A successfully scanned container creates a Container Audit Entry of type WHS (released to warehouse) capturing user, date, time and carton status.

This is used in warehouses where cubing is in use and each picking carton has a dispatch label followed by picking labels.

Examples

This section illustrates examples concerning:

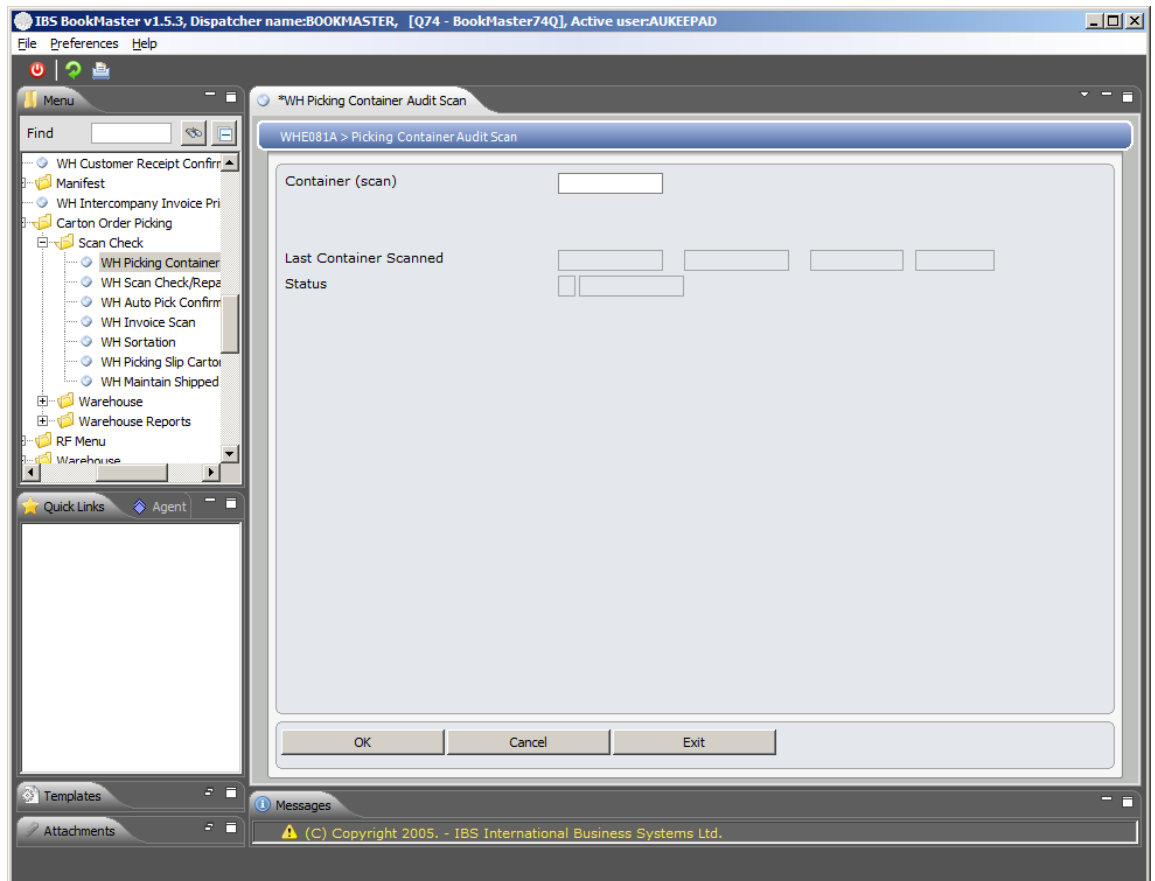
[Example 1: Picking Container Audit Scan](#)

Example 1: Picking Container Audit Scan

This example describes how to pick container audit scan.

1. Select option **WH Picking Container Audit Scan** from Base Modules> Distribution> Inventory Management> Warehouse Management> Warehouse Control> Pick/Pack/Dispatch Confirm> Invoice Dispatch menu.

WHE081A Picking Container Audit Scan selection panel is displayed.



Relevant Fields

Container

WH movement initial entry screen - To override the priority and select a particular container to move, scan the container number here.

If this field is left blank then the transactions with the highest run priority will be selected.

Pick confirm - Scan/enter the container to confirm movement out.

Note: If the container ID is not entered, an error message is displayed, Cntnr can't be blank. Enter a valid code.

Or the Container scanned/entered is different from the one allocated to the Device, an error message is displayed.

In Repack Orders entry of a From Container is mandatory.

In Ad Hoc Movement scan/enter the container and if the container is already opened for the Device selected the message Cntnr already opened displays. Change the entry to be valid.

Putaway confirm - Scan/enter the container to confirm.

WHE030 ISBN Putaway Confirm - Displays the current container that the title resides on.

2. Enter valid container and click **OK**. Depending on status of container following panel is displayed

WHE081A Picking Container Audit Scan panel is displayed.

3. Click **OK**. If the container has already been sorted/shipped a message displays on the screen. The last container scanned displays along with the user, date and time the container was scanned. The status of the container also displays for example labeled, packed, open.