
WHE080 Scan Check by Container

Overview

The scan check/repack by container program ensures carton contents reflect picking instructions (as a result of 'cubing').

Explanation

This function is not instructional, meaning the operator is not advised what a carton should contain. The operator must empty the carton and scan each title as it is repacked into the carton.

On completion of a container, the current contents of the container will be used to complete picking transactions and the container status will be updated to P=Packed and a dispatch label printed.

If the scanned container is a tote (containing multiple orders' picks) the system will instruct the operator to repack a tote's contents into separate cartons (packaging types) per order. If all orders are complete, tote container is set to P=Packed.

To avoid creating a separate run per tote use the link for a batch container (tote) to multiple picking slips thus eliminating the existing dependence on the run number itself.

On completion of the last container of an order an invoice will print and the order will be complete.

TMSWH/SCN-QTY determines whether to allow quantity entry or not.

A facility is provided to accept a container ID or "Permanent License plate" or "SSCC"

The Container Scan Check file provides a facility to QA the container which may be invoiced, or partial completed in Warehouse Transaction file for the order depending on the following:

TMSWH/SCN-CNTR Container stage After De-Consolidation and **TMSWH/SCN-INST** Scan check instructions.

After scan check optionally print invoice for normal carton when it is the last carton for the picking slip. Allow facility to be able to dispatch automatically after scan check.

TMSWH/SCN-DSPT Determines whether to dispatch automatically after scan check.

TMSWH/SCN-INVP Defines whether to print an invoice for a normal carton when it is the last carton for the picking slip.

An Over pick Putaway report prints when each over picked title is scanned. Note: Since we cannot be sure of the location from which stock was over picked, stock is always returned to the lowest picking sequence location contained on the original picking slip.

If automatically repacking a message displays Return to Conveyor.

If one of more titles has been short picked (Unders) during the scan check then the corrective picking slip program (WHR116) will:

- a. create outstanding pick slip and allow resumption of scan check posit corrective picking, OR
- b. Short ship the carton to invoke standard backorder logic.

During dispatch confirmation for Direct to Invoice orders it assumes picking has been done and updates files for dispatch processing as per DSE101 Dispatch Confirmation. If short picked, a credit and re-invoice is done.

Performs after carton contents have been confirmed and stock updates performed (via pick-to-light P2L interface). Revises stock to reflect scanned carton contents.

Credit the original invoice (printed prior to last carton check weigh) and re-invoice based on the scanned carton contents, if they differ to the P2L confirmed contents.

For location stock accuracy, record tote stock in a container (post picking and pre deconsolidation) then record packing-bench stock (post tote deconsolidation scan and pre-shipper confirmation).

Allows the tote to be scanned by permanent license plate or Bookmaster assigned container ID.

Automatically advance confirmed shipper cartons to a sorted state, since QA cartons are manually moved to the dispatch lane – not conveyed.

Records item/location discrepancy if corrective action (re-pick short) is unable to find the short quantity.

To de-consolidate the tote, this program calls WHO486 (Tote De-consolidation) to transfer stock from the tote container to packing bench and release IPO's that had been dependent on the tote picking. Once the tote container has been fully de-consolidated, the permanent license plate number from the tote is de-assigned and the tote status is changed to 'P' on the WHCM00P. When scanning a Tote at QA, the details need to be recorded against the dispatch container, rather than the Tote container, so that it is possible to gather statistics on totes for the customer/order level. This update will allow matching the individual scanned item/quantity to the pick slips – and therefore identify which pick slip had any under/over attributed to it.

Examples

This section illustrates examples concerning:

[Example 1: Scan Check by Container](#)

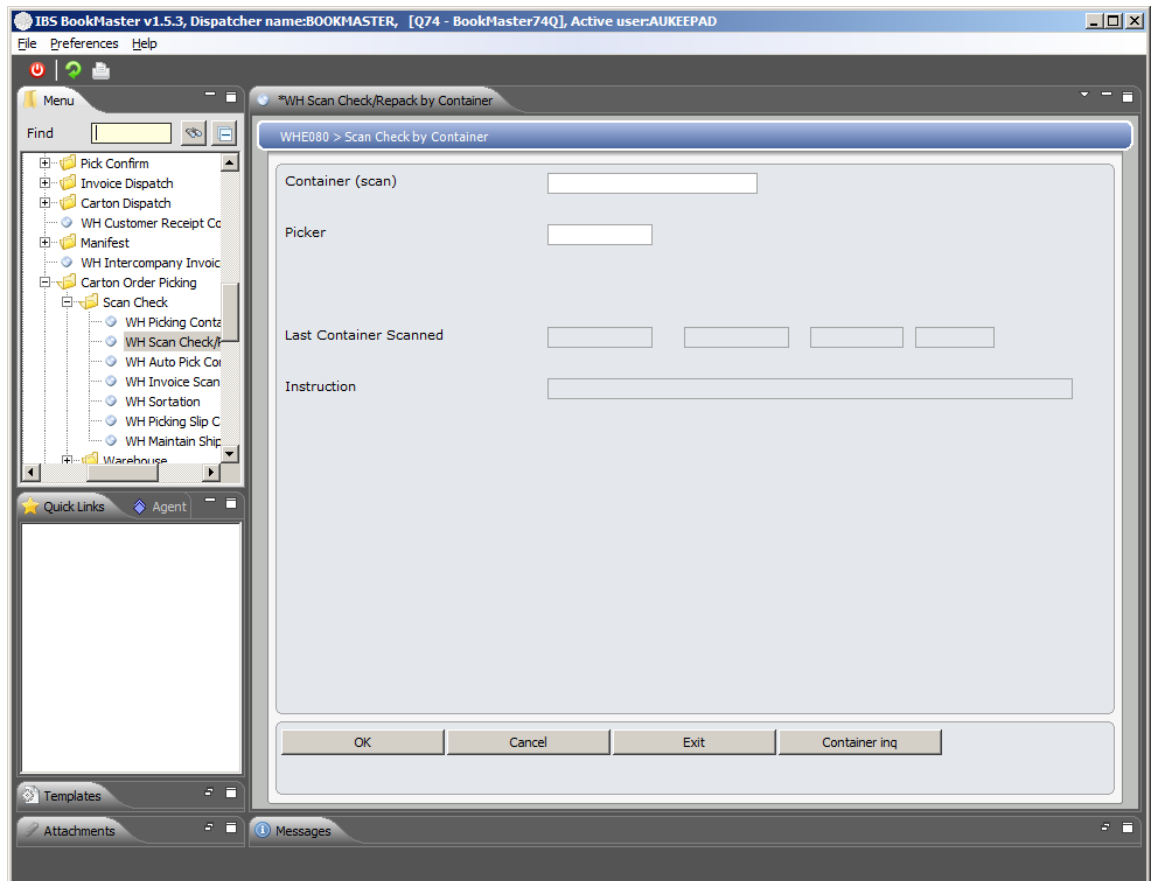
[Example 2: Container Details Inquiry](#)

Example 1: Scan Check by Container

This example describes how to scan check by container.

1. Select option **WH Scan check/repack by container** from Base Modules> Distribution> Inventory Management> Warehouse Management> Warehouse Control> Pick/Pack/Dispatch Confirm> Carton Order Picking> Scan Check menu.

WHE080A Scan Check by Container selection panel is displayed.



Functions

Container inq

Access WHI130 Container Details Inquiry to inquire on container details.

Relevant Fields

Container(Scan)

WH movement initial entry screen - To override the priority and select a particular container to move, scan the container number here.

If this field is left blank then the transactions with the highest run priority will be selected.

Pick confirm - Scan/enter the container to confirm movement out.

Note: If the container ID is not entered, an error message is displayed, Cntnr can't be blank. Enter a valid code.

Or the Container scanned/entered is different from the one allocated to the Device, an error message is displayed.

In Repack Orders entry of a From Container is mandatory.

In Ad Hoc Movement scan/enter the container and if the container is already opened for the Device selected the message Cntnr already opened displays. Change the entry to be valid.

Putaway confirm - Scan/enter the container to confirm.

WHE030 ISBN Putaway Confirm - Displays the current container

that the title resides on.

Picker

This is the picker assigned.

2. Key in required fields and click **OK**.

WHE080 Scan Check by Container panel is displayed showing the instruction.

Functions

Pick slip

This will create an outstanding pick slip and allow resumption of scan check posit corrective picking, if one of more titles has been short picked (unders) during the scan check

New carton

This is used for packing in to the new container.

Short ship

This will short ship the carton to invoke standard backorder logic. if one of more titles has been short picked (unders) during the scan check

Complete

It is used to scan check by container.

3. Click **OK**.

WHE080B Scan Check by Container panel is displayed.

Functions

Complete

It is used to scan check by container.

4. Click Complete.

WHE080C Scan Check by Customer - Recount panel is displayed.

5. Enter item and count quantity and click **OK**.

WHE080B Scan Check by Container panel is displayed showing the instruction.

6. Click **OK**.

Scan check by container is completed.

Example 2: Container Details Inquiry

This example describes how to inquire on customer details.

1. Repeat steps 1 as in [Example 1: Scan Check by Container](#)
2. Click Container Inq.

WHI130 Container Details Inquiry panel is displayed.

Please refer WHI130 for further details.

Cross Reference

- WHE160A – Pick confirmation for cubed orders
- WIE110A – HCA Route Director Invoicing