
TMM000 Mfg Data Queue Processor - Controller Interface

Overview

The data queue processor must be activated for jobs to be processed through the manufacturing system. This updates the queue processor for recovery of purchase receipts, allows for document type 'TF', document sub-type 'SC' for scanner processing for scanner transactions and removes the code for processing cost calculation if the value of stock is negative processing.

Examples

This section illustrates examples concerning:

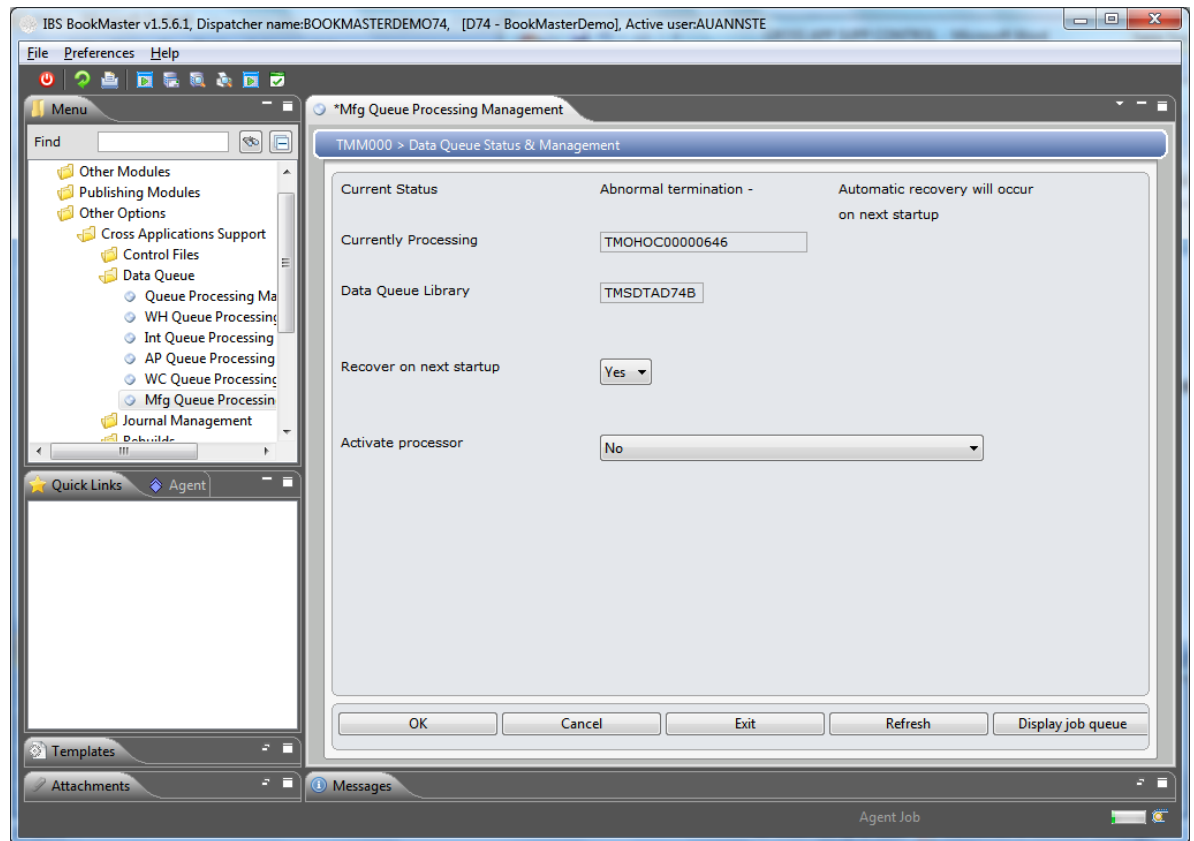
[Example 1: Activation/deactivation of data queue processor](#)

Example 1: Activation/deactivation of data queue processor

This example describes how to activate or deactivate data queue.

1. Select option **Mfg Queue Processing Status & Management** from Other Options>Cross Applications Support> Data Queue menu.

TMM000 Data Queue Status & Management panel is displayed.



Functions

[Display Job queue](#) Work with job queue.

2. Set activate processor as Yes and click **OK**. Data Queue processor is activated.

Cross Reference

- TMO015 - Scanned transaction update.
- TMO000 - Data Queue processor.