

---

# DSW153 Work with Warehouse Stock Allocation

---

*Overview* This program is primarily used to automatically allocate the total forecast quantity into the various warehouses based on user defined item attributes using the IC Code. An example of this will be to classify a product as consumable or non-consumable. Different allocation rules can be setup by specific customer or by any of the customer levels.

---

## Explanation

The following control files will need to be set-up:

**TMSDS/FCST-AGE** – defines the % take-up by the number of years the book has been used.

**TMSDS/OF-STYP** – defines the % take by subject type of core or elective.

**TMSDS/ENL-ALLC** – defines which title classification is used to set-up the supply allocation by warehouse.

**TMSDS/OS-RSVBN** – defines which customer (school) will be updated with their reservation order when the actual sales order is raised.

---

## Process

The original and adjusted forecast quantities are generated by running program DSO143. The user will need to enter the calendar year that relates to the enrolment and the default delivery period that will be used if the first sell date on the enrolment data is blank. ORERA00P is the database that stores the forecast data by item. Record types 1 and 2 are the original and adjusted forecast respectively.

Before the adjusted forecast quantities are reviewed by school, the user will need to define the stock allocation % by main warehouse and by business centers using DSW153 program. The stock allocation definition can be done by the various customer levels and by the item type of consumable and non-consumables within the selected customer level.

The adjusted forecast quantities are displayed, reviewed, and amended by calendar year, school, and item type of consumables / non-consumables using DSM630 program. When the forecast quantities have been finalised, reservation orders are generated by taking function key F10 on the same screen.

A PSI type will be assigned to each warehouse. Suggested orders will be generated for each PSI type, which in effect is each warehouse using the current PSI suggested order generation program DSO582. The suggested order quantities generated will take into account the current stock on hand in the warehouse, the stock holding policy, the outstanding orders, reservation quantities generated from DSM630 previously, and the supplier lead time.

An order indication report DSR320 can be produced to list the suggested orders by supplier by period. The user can, at this point, still review and modify the suggested order quantities using the current PSI maintenance screen DSE152 prior to generating the POs.

When the suggested order quantities have been reviewed and finalised, the POs can be automatically generated by running DSO635 program.

---

## Examples

This section illustrates examples concerning:

[Example 1: Warehouse Stock Allocation](#)

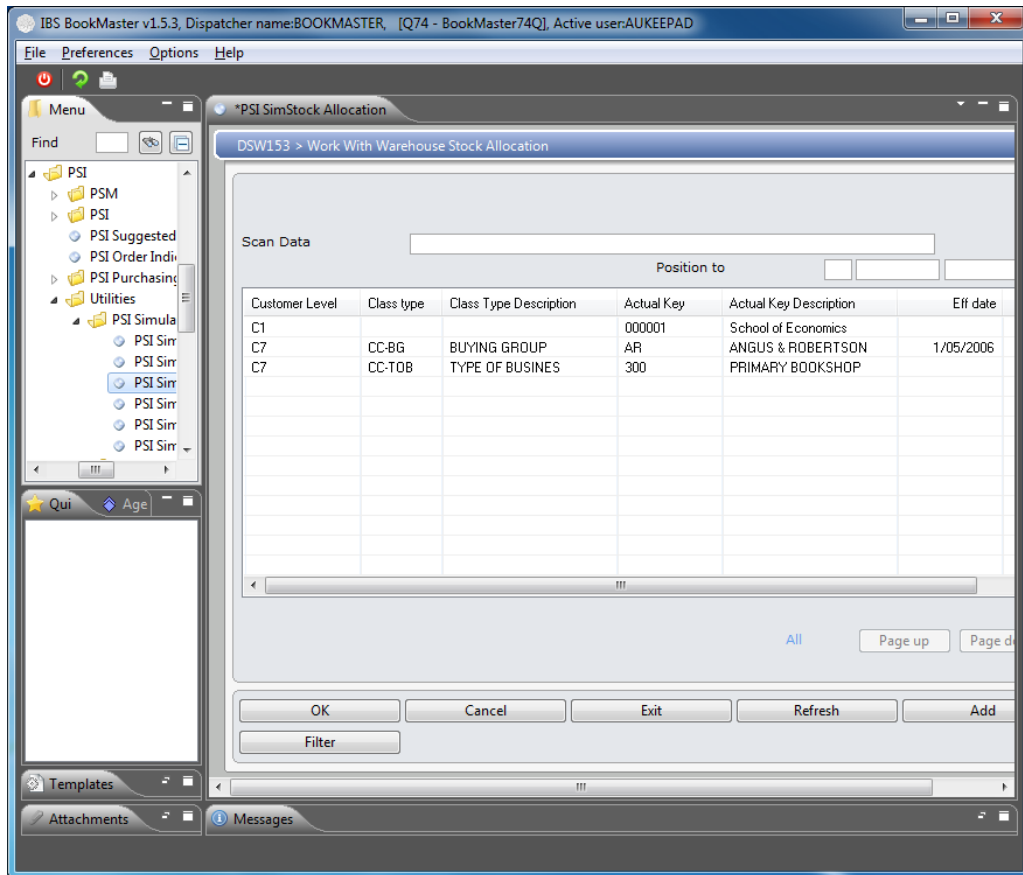
---

### Example 1: Warehouse Stock Allocation

This example describes how to perform warehouse stock allocation.

1. Select option **PSI Sim Sales Allocation** from Base Modules> Distribution> Other> DRP> Other> PSI> Utilities> PSI Simulation menu.

**DSW153 Work with Warehouse Stock Allocation** main panel is displayed.



## Options

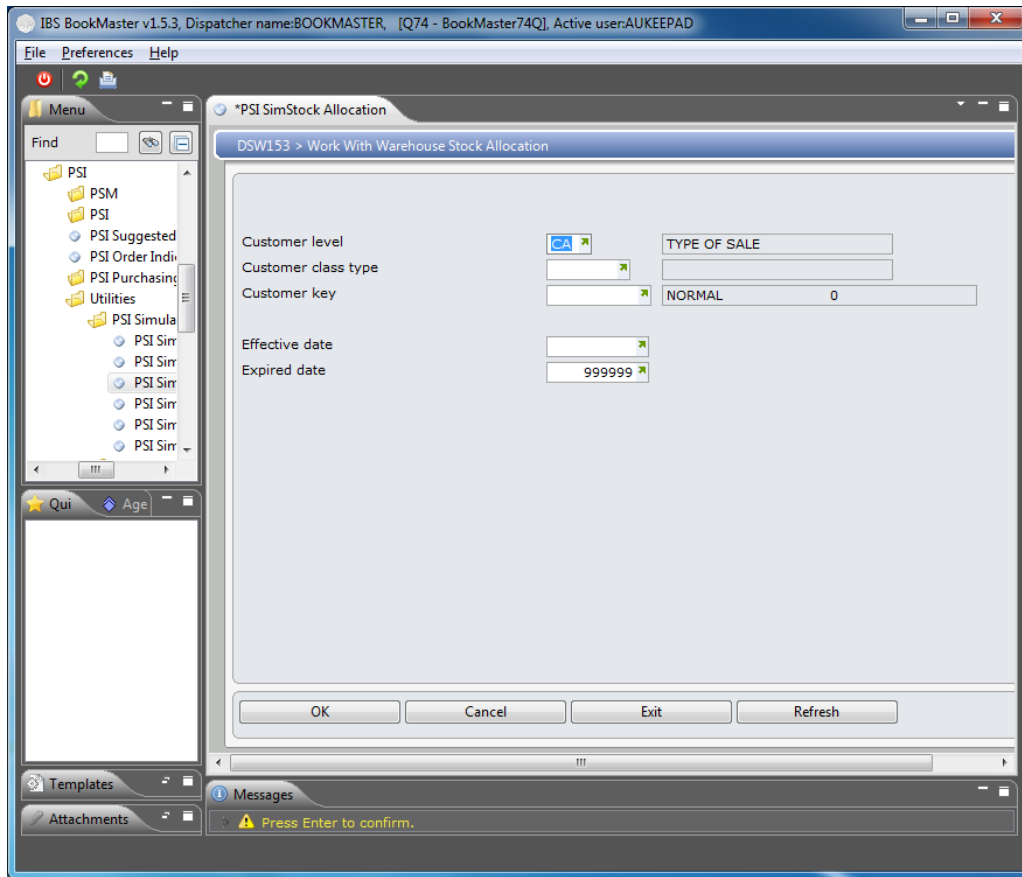
- [Change](#) Access Work with Warehouse Stock Allocation in change mode to change selected stock allocation details.
- [Copy](#) Access Work with Warehouse Stock Allocation in copy mode to copy selected stock allocation details.
- [Delete](#) Access Work with Warehouse Stock Allocation in delete mode to delete selected stock allocation details.
- [Display](#) Access Work with Warehouse Stock Allocation in inquiry mode to inquire on selected stock allocation details.

## Functions

- [Add](#) Access Work with Warehouse Stock Allocation in add mode to add new stock allocation details.

2. Click **Add**.

**DSW153 Work with Warehouse Stock Allocation** panel is displayed in add mode.



## Relevant fields

### Customer level

Customer level

Select the Customer level.

### Default filtering level

In PSI Screen Writer Definition the key level that is to be used to access sales data from SAHM00P. This will define the levels when the PSI data can be filtered using the Filter Function.

### Customer class type

Select the customer classification if the Customer Level is C5 or C7.

### Customer key

Select a valid customer or classification when C1 to C7 is selected on the previous field.

### Effective date

#### Effective date

In Price Simulation Maintenance, the effective date indicates to the system when a particular price becomes effective. If expired, the price is retrieved from the Title Master file.

In Copy Price Simulation, enter the date from which this new PSM ID should start.

Enter the starting date for the stock allocation to begin.

#### Active date

In Copy Price Simulation, the active date of the PSM ID to be

copied.

In the case of transferring Approved Prices and printing a PSM Approved report, the Active Date is the date prices become effective.

Also used by PSM Detail Definition Report to determine the date the prices become effective.

### Expired date

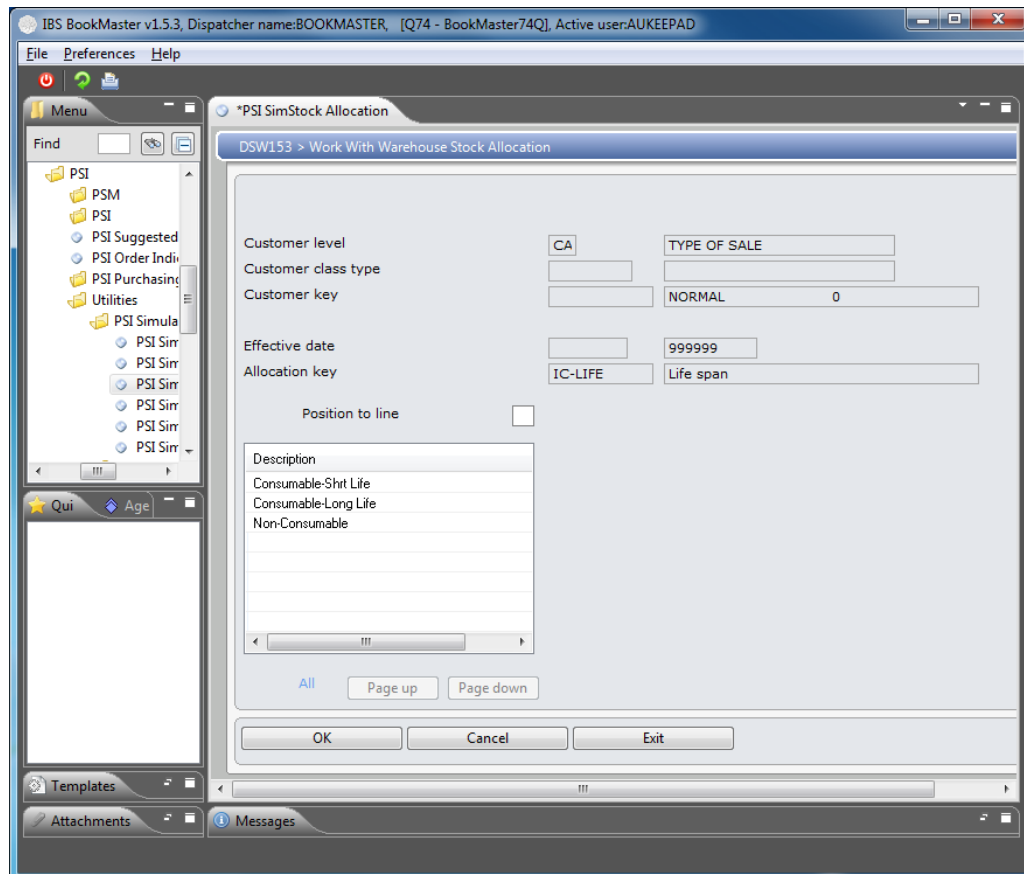
In Copy Price Simulation, enter the date on which this PSM ID should terminate.

In Stock Ratio Maintenance, entry of the expiry date is mandatory. This is the date the stock ratio expires.

Enter the ending date when the stock allocation is no longer required or leave to default to 99/99/99.

3. Key in required fields and click **OK**.

**DSW153 Work with Warehouse Stock Allocation** panel is displayed in add mode.



### Options

#### Display

Access Work with Stock Allocation to display warehouse stock allocation percentage details.

#### Change

Access Work with Stock Allocation to change warehouse stock allocation percentage details.

## Delete

Access Work with Stock Allocation to delete warehouse stock allocation percentage details.

### Relevant Fields

#### Allocation key

The allocation key defaults from **TMSDS/ENL-ALLC**.

4. Select one or all of the allocations which are created in **TMSDS/IC-LIFE** and click **Change**.
5. Key in required fields and click **OK** to return to previous panel.
6. Click **OK** to confirm addition of stock allocation.

Stock is allocated to selected warehouse.

**Note** To delete/display/change percentage stock allocation, and delete/display/change/copy customer specific allocation rule, select the formula and click on the corresponding option.