
DSW130A Catalogue Maintenance

Overview

Before titles can be added to a catalogue the catalogue needs to be defined.

Once the catalogue has been defined by establishing the various Control Files, titles can be added to a catalogue. The maintenance program is used to Add titles, change catalogue details in relation to these titles, delete an item from a catalogue. A display or inquiry option is also available to view a titles catalogue details. Once titles have been added to catalogue the next step is 'Catalogue Sequence Update'.

Examples

This section illustrates examples concerning:

[Example 1: Add a Catalogue](#)

[Example 2: Change Catalogue Details](#)

[Example 3: Delete Catalogue Details](#)

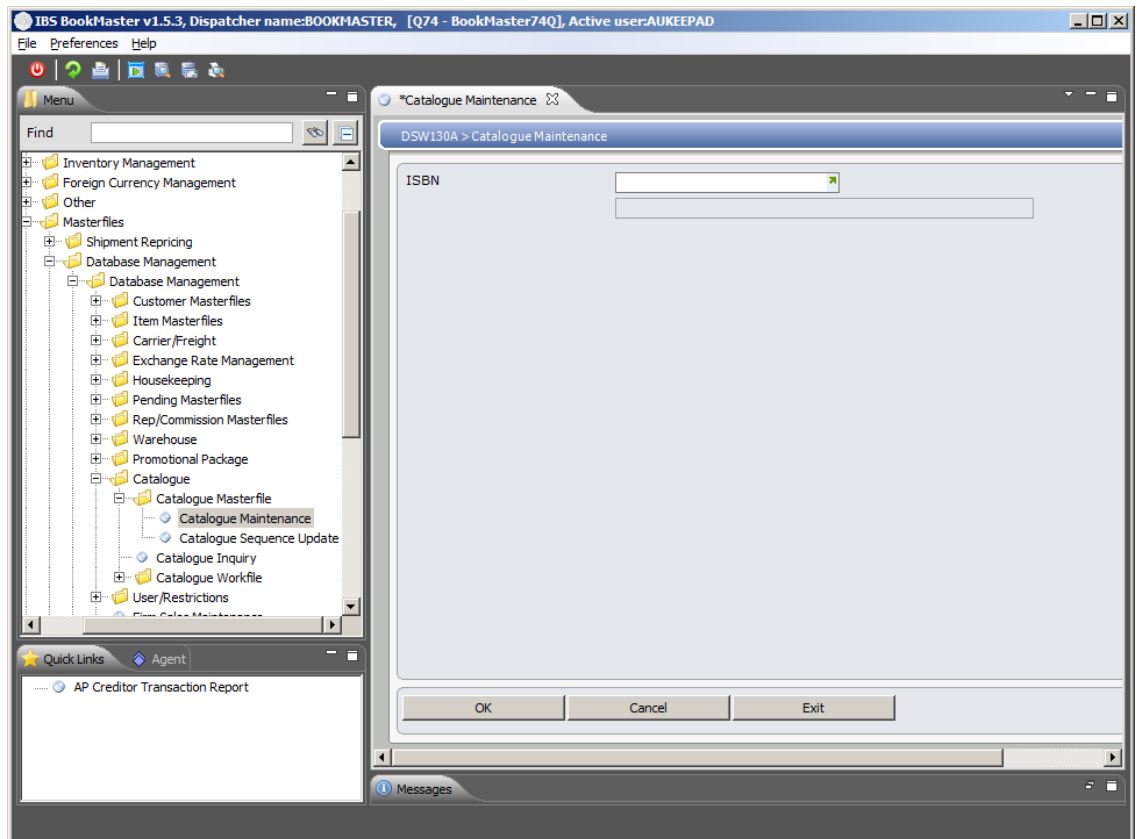
[Example 4: Display Catalogue Details](#)

Example 1: Add a Catalogue

This example describes how to add a catalogue.

1. Select option **Catalogue Maintenance** from Base Modules>Distribution>Masterfiles>Database Management>Database Management>Catalogue>Catalogue Workfile menu.

DSW130A Catalogue Maintenance panel is displayed.

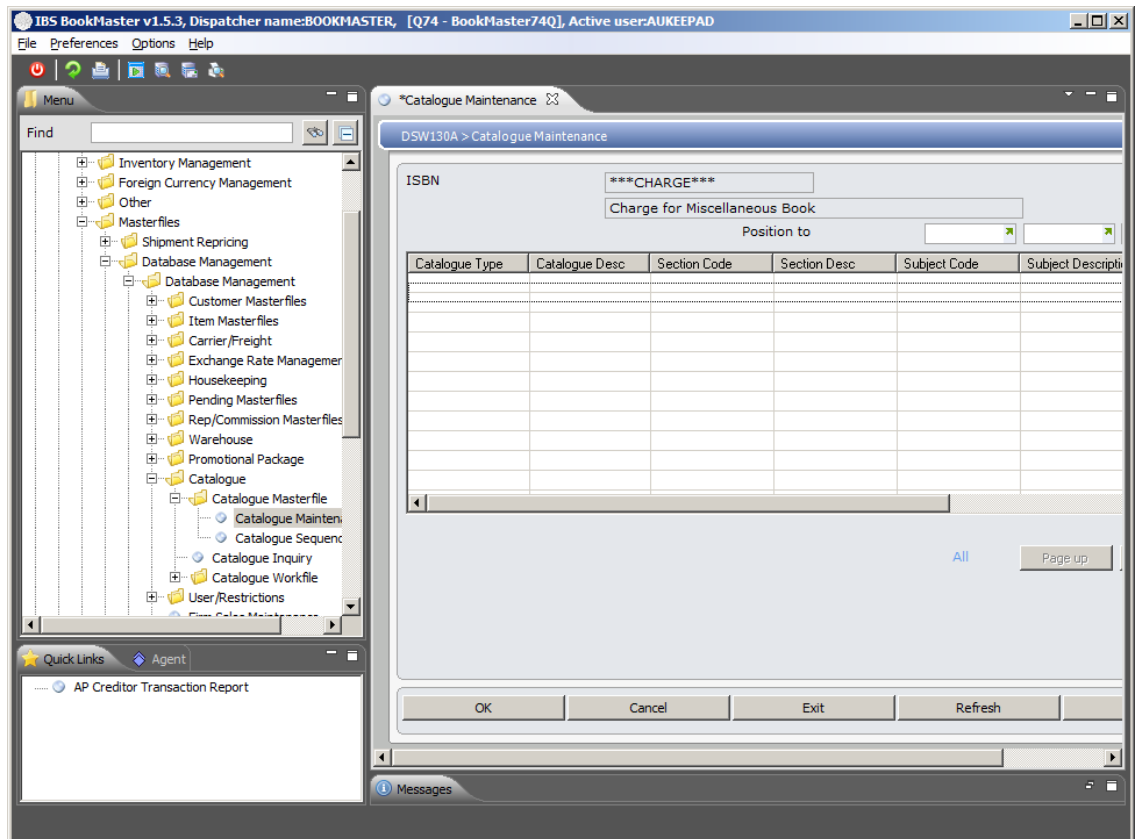


Relevant Fields

Item Enter item which is to be added to catalogue.

2. Enter item and click **OK**.

DSW130A Catalogue Maintenance main panel is displayed.



Options

- Change** Access DSW140A Catalogue Maintenance in change mode to change the sequence number.
- Delete** Access DSW140A Catalogue Maintenance in delete mode to delete the record.
- Display** Access DSW140A Catalogue Maintenance in inquiry mode to display the record.

Functions

- Add** Access DSW140A Catalogue Maintenance in add mode to add the record.

3. Click **Add**.

DSW140A Catalogue Maintenance panel is displayed in add mode.

Refer DSW140A for further details.

Example 2: Change Catalogue Details

This example describes how to change catalogue details.

1. Repeat steps 1 and 2 as in [Example 1: Add a Catalogue](#)
2. Select a record and click **Change**.

DSW140A Catalogue Maintenance panel is displayed in change mode.

Refer DSW140A for further details.

Example 3: Delete Catalogue Details

This example describes how to delete catalogue details.

1. Repeat steps **1** and **2** as in [Example 1: Add a Catalogue](#)
2. Select a record and click **Delete**.

DSW140A Catalogue Maintenance panel is displayed in delete mode.

Refer DSW140A for further details.

Example 4: Display Catalogue Details

This example describes how to display catalogue details.

1. Repeat steps **1** and **2** as in [Example 1: Add a Catalogue](#)
2. Select a record and click **Display**.

DSW140A Catalogue Maintenance panel is displayed in display mode.

Refer DSW140A for further details.

Cross Reference

- DSM015 – Item Masterfile Maintenance