

---

# DSR836 Monthly Operations Statistic Report

---

<i>Overview</i>	This report is used for analysis of monthly sales broken down into document type. The report is selected by period and shows the number of complete and incomplete invoice orders processed.
<i>Purpose</i>	This panel allows you to: Print monthly operations statistic report

---

## Follow up

---

### Printouts

This is printout program.

Selection of the following is required:

- Period
- Summary level which can be by one of the following:

Document

Type of sale

Class

Division

Group

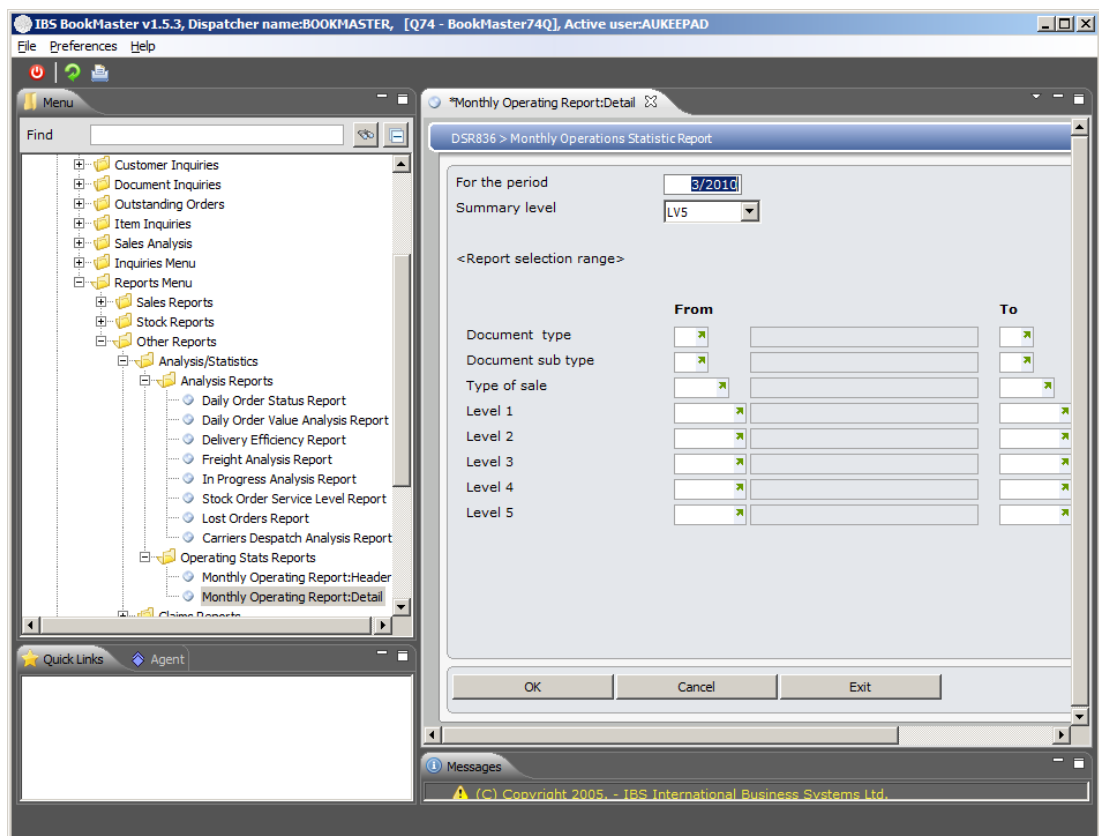
Category

Sub-category

A further optional range selection can be made from:

- Document type
- Document sub-type
- Type of sale

- Class
- Division
- Group
- Category
- Sub-Category



Click **OK**.

Monthly operations statistic report gets generated.

This report displays following information

- Document
- Type of sale
- Class, Division, Group, Category, Sub-category
- Complete units and lines

- Total units and lines

\* \* \* E N D O F R E P O R T \* \* \*