
DSR190 Sales by Customer/Item

<i>Overview</i>	The Sales by customer/item report shows monthly and yearly sales for both current and last year, by customer. The report is by Class, Division, Group, Category and ISBN showing MTD quantity and amount and YTD quantity and amount. A new page is started when the customer or division changes. Selection is by Period with an optional Branch range and a yes/no flag to indicate whether to show costs.
<i>Purpose</i>	This panel allows you to Print Sales by Customer/Item Report.

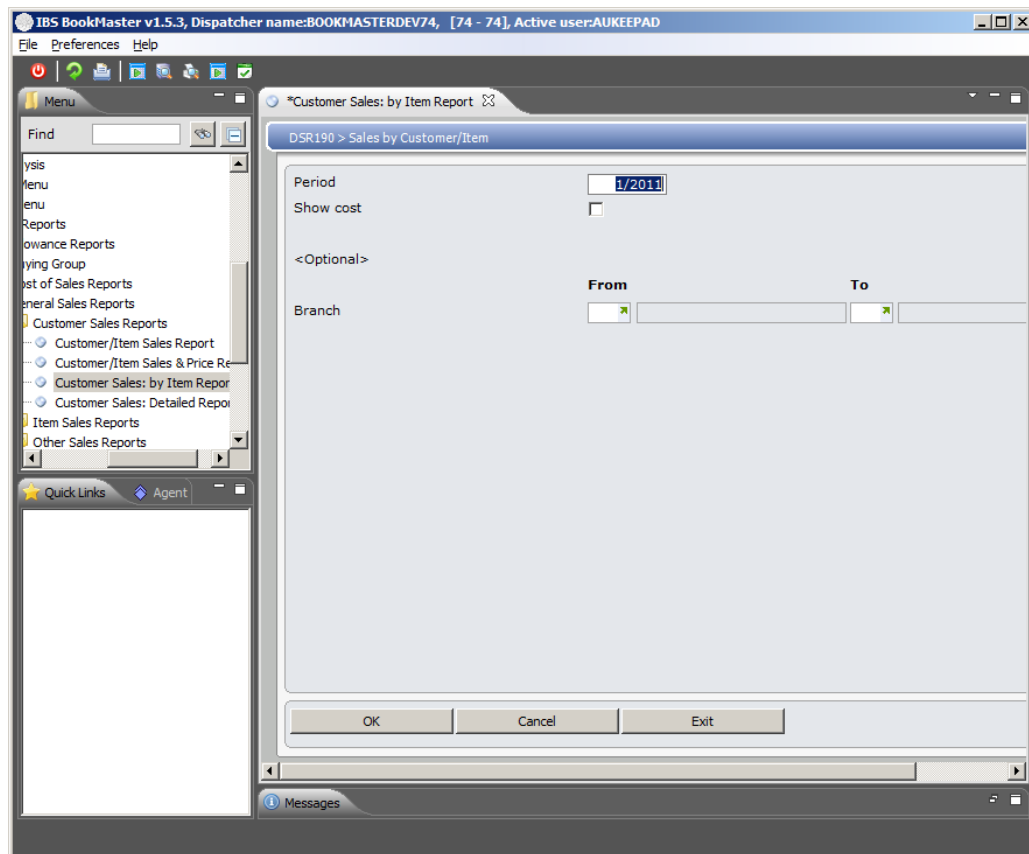
Follow up

Printouts

This is printout program.

Selection of the following is required:

- Period
- Show cost
- Branch range



Click **OK** to produce the report.

This report displays the following information:

- Period
- Customer
- Class
- Division
- Group
- Category
- ISBN and item
- Totals are given for Category, Group, Division, Class and Customer

