
DSR167 Stock Order Service Level

<i>Overview</i>	<p>This report provides analysis of ordered versus shipped deliveries. It includes a summary comparison of quantity and value for a nominated item hierarchy, for selected customers, warehouses and items.</p> <p>Report summary and break levels used in the Summary level and Page break fields are defined in TMSDS/DSR167</p>
<i>Purpose</i>	<p>This panel allows you to</p> <p>Print Stock Order Service Level Report.</p>

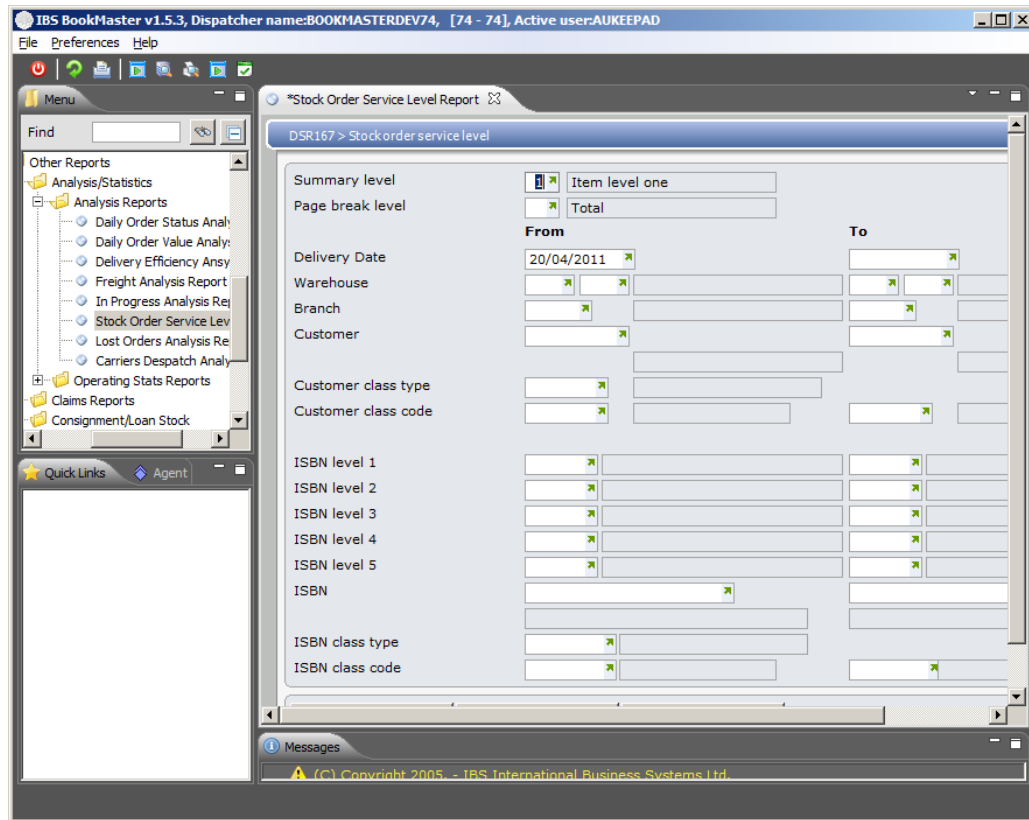
Follow up

Printouts

This is printout program.

Selection of the following is required:

- Summary level
- Page break level
- Delivery date range
- Warehouse range
- Branch range
- Customer range
- Customer Class type
- Customer Class code range
- Item Hierarchy levels 1 – 5 range
- Item range
- Item Class type
- Item Class code range



Click **OK** to produce the report.

This report displays the following information:

- Item Level 1
- Branch
- Description
- Ordered Quantity
- Shipped Quantity
- Quantity Percentage
- Lines
- Ordered Value
- Shipped Value
- Value Percentage
- Variance
- Grand Total

