
DSO580 Budget Breakdown by Allocation

Overview

This program is used to store, maintain and breakdown the budget by allocation from a higher sales analysis level to lower sales analysis level.

The budget breakdown depends on the allocation definition created in program DSM510 Budgeting by Allocation. The generated budget records are created in Sales Analysis History Masterfile.

Examples

This section illustrates examples concerning:

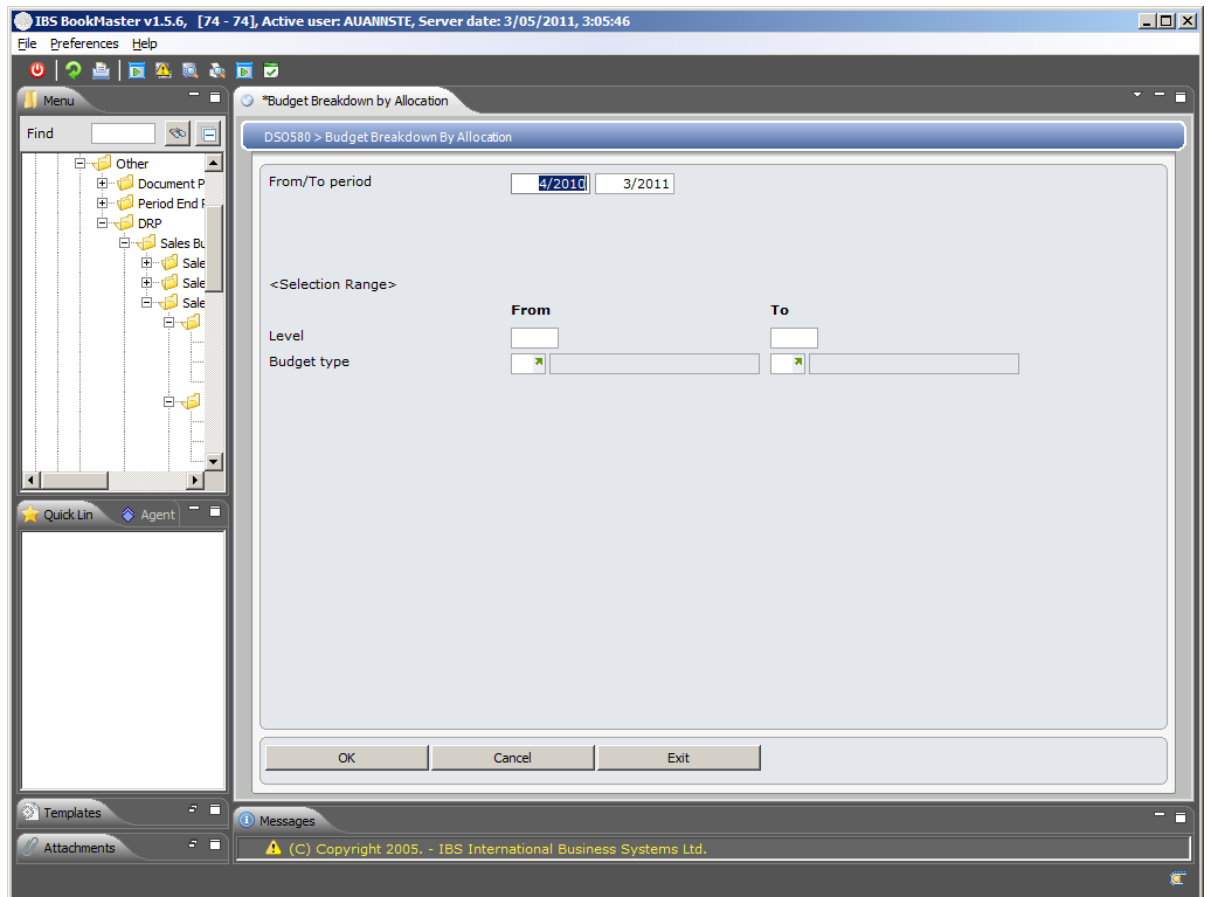
[Example 1: To Breakdown the Budget by Allocation](#)

Example 1: To Breakdown the Budget by Allocation

This example describes how to breakdown or store or maintain the budget by allocation.

1. Select option **Budget Breakdown by Allocation** from Base Modules> Distribution> Other> DRP> Sales Budgets/Forecast> Sales History Budget Summary> Process menu.

DSO580 Budget Breakdown By Allocation panel is displayed.



Relevant Fields

From/To period The period range, for which the budget breakdown by allocation is applicable, defaults but can be overridden.

Level A range of Levels can be selected for inclusion in this allocation. The levels must be valid in Budgeting allocation header file.

2. Key in all the required fields. Job processing panel is displayed. Change the job queue if required and select to run the process in batch or real time. Click **OK** to confirm the selection. Message 'job Completed' is displayed to indicate completion of process.

dso580p1.pdf - Adobe Reader

File Edit View Document Tools Window Help

2 / 2 66.7% Find

TMS DEVELOPMENT - RELS 7.4.3 Budget Breakdown by Allocation

REPORT : DSO580
 RUN DATE : 3/05/11
 RUN TIME : 15:06:01

From Level	To Level	Lvl	Seq	Description
A 0 NATIONAL/TOTAL	D 0 BRANCH/TOTAL	A10	00010	National To Branches
A 6 NATIONAL/TITLE	B 6 COMPANY/TITLE	B10	00101	B10 010
	B 6 COMPANY/TITLE	C10	00100	C10 100
	B 6 COMPANY/TITLE	D10	00100	D10 100
A 0 NATIONAL/TOTAL	B 0 COMPANY/TOTAL	1	00001	This is test
A 6 NATIONAL/TITLE	I 6 REP/TITLE	1	00020	Phil/Alex test
	I 6 REP/TITLE	1	00030	Phil/Alex test
A 0 NATIONAL/TOTAL	I 0 REP/TOTAL	800	00010	TOTAL TO REP
A 1 NATIONAL/DIVISION	I 1 REP/DIVISION	990	00010	rep by division

*** END OF REPORT ***

14.69 x 16.58 in