

---

# DSO147 Analyse Store Order Requisition

---

*Overview*      The report provides suggested stock transfers between hubs and satellites based on the requirements and current stock availability.

*Purpose*      This panel allows you to:  
                 Print report of store order requisition

---

## Follow up

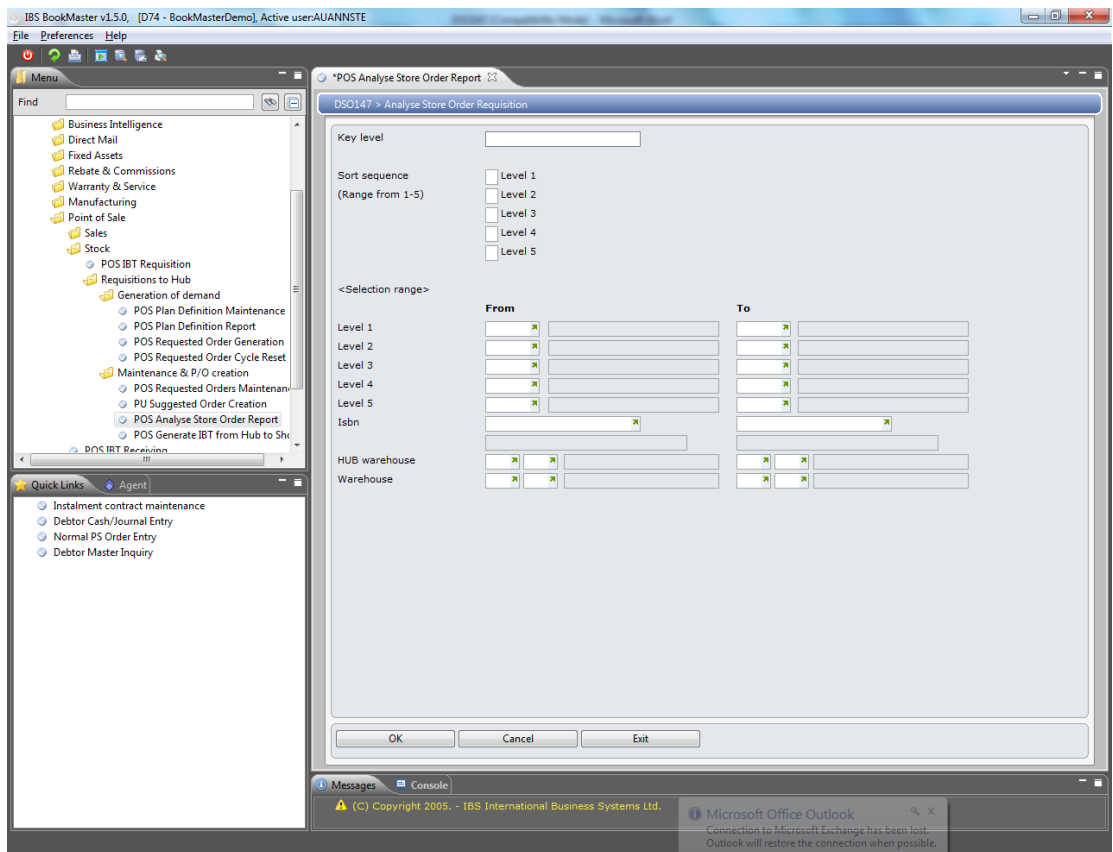
---

### Printouts

This is a printout program.

Selection of the following is required

- Key level
- Sort sequence
- Item hierarchy levels
- Item
- HUB warehouse
- Warehouse



## Relevant Fields

### Key level

This is a name given to the order.

### Sort sequence

This determines in which sequence you want to analyse the levels. Enter 1–5 next to the levels in the order you want them to display on the report.

Note: Not all 5 levels need to be included.

### Level 1 - 5

Enter the level codes or range of codes for all the levels 1–5 to be included in the analysis.

### ISBN

Enter the title or range of titles to be included in the analysis.

### HUB warehouse

Enter the HUB warehouse code or range of codes to be included in the analysis.

### Warehouse

Enter the Distribution warehouse code or range of codes to be included in the analysis.

Key in required fields and click **OK** to produce the report.

This report shows following information:

- ISBN
- Title
- Warehouse
- Warehouse description
- Suggested stock transfer quantity

- Requested quantity
- Outstanding order
- Forward order
- Reserved
- On Hand quantity
- Transfer
- On board
- On order

