
DSO144 Purchase Order Creation

<i>Overview</i>	<p>This program is used to consolidate suggested orders by the main warehouse</p> <p>It includes: Backorder Acceptance, Substitute item, Partial delivery, Consolidated orders</p> <p>The physical warehouse is used on the Purchase Order header and the logical warehouse on the Purchase Order detail.</p>
<i>Purpose</i>	<p>This panel allows you to:</p> <p>Create a Purchase Order</p>

Examples

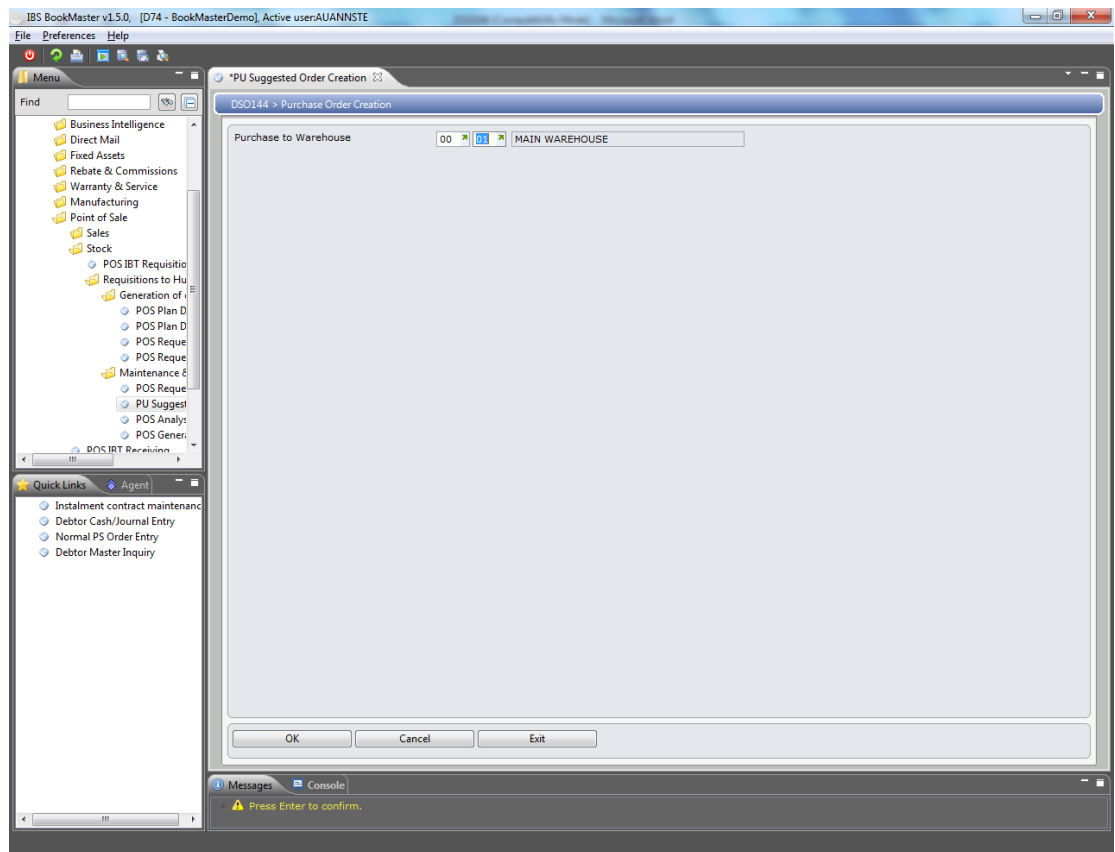
This section illustrates examples concerning:

[Example 1: Create a Purchase Order](#)

Example 1: Create a Purchase Order

This example describes how to create a purchase order.

1. Select menu option **PU Suggested Order Creation** from **POS: Requisitions** menu.
DSO144 Purchase Order Creation panel is displayed.



Relevant Fields

Purchase to Warehouse

In Requested Order Cycle Reset enter the hub warehouse/satellite warehouse combination for which you want to reset the requested order cycle. Once the warehouse has been entered the status for the warehouse displays in the Status field.

G=GENERATION IN PROGRESS

A=ACTIVE

In Requested Order Generation and Retail Order Requisition enter the hub warehouse/satellite warehouse combination for which you want to generate requested orders.

In Retail Receipts Entry this is the warehouse into which to receipt retail titles.

Purchase to Warehouse

In Purchase Order Creation enter the hub warehouse/satellite warehouse combination for which the purchases are to be made to.

2. Select the required warehouse and click **OK**.

Purchase Orders are created.