
DSM448 Restriction Type Maintenance

Overview

This program is used to create and maintain order restrictions types. They are used in conjunction with order restriction definitions and outline what restrictions are applicable to a specific order.

Explanation

A restriction is a constraint which will apply to an order and will vary depending on how it is set up. A restriction could be used to prevent the sale of a title to a certain group of customers, allow the sale of a title to one customer only or show a warning message when a particular product is ordered.

First an order restriction type is set up to determine the kind of restriction. This includes:

- Specifying whether the restriction will be allowed to be viewed using the Restriction Inquiry option within Order Processing.
- If a customer or product that has been defined as a restriction will be allowed to still enter the restricted product, or if a warning message will display when they do so, or if they will not be permitted to enter the product at all.
- If the restriction type is to be based on a certain customer.
- Entering text outlining why the restriction is in place and any action which needs to be taken.

After setting up the restriction type a definition is entered which determines how the restriction works, for example, what customers, debtors, titles it is applicable to and so on.

All order entry functions check the order restriction definition. If an order restriction is applicable to an order, an error message will display. The restriction can be inquired upon using an option button only if it has been set up to allow this to occur.

If a restriction prevents the sale of a product the system forces the order line to zero quantities as well as the delivery and back order quantities and generates a text line with a restriction message. This restriction message attaches to the order line and prints on the invoice/advice sent to the customer.

Examples

This section illustrates examples concerning:

[Example 1: Addition of a Restriction Rule](#)

[Example 2: Changing Restriction Type Definition](#)

[Example 3: Copy Restriction Type Definition](#)

[Example 4: Delete a Restriction Type Definition](#)

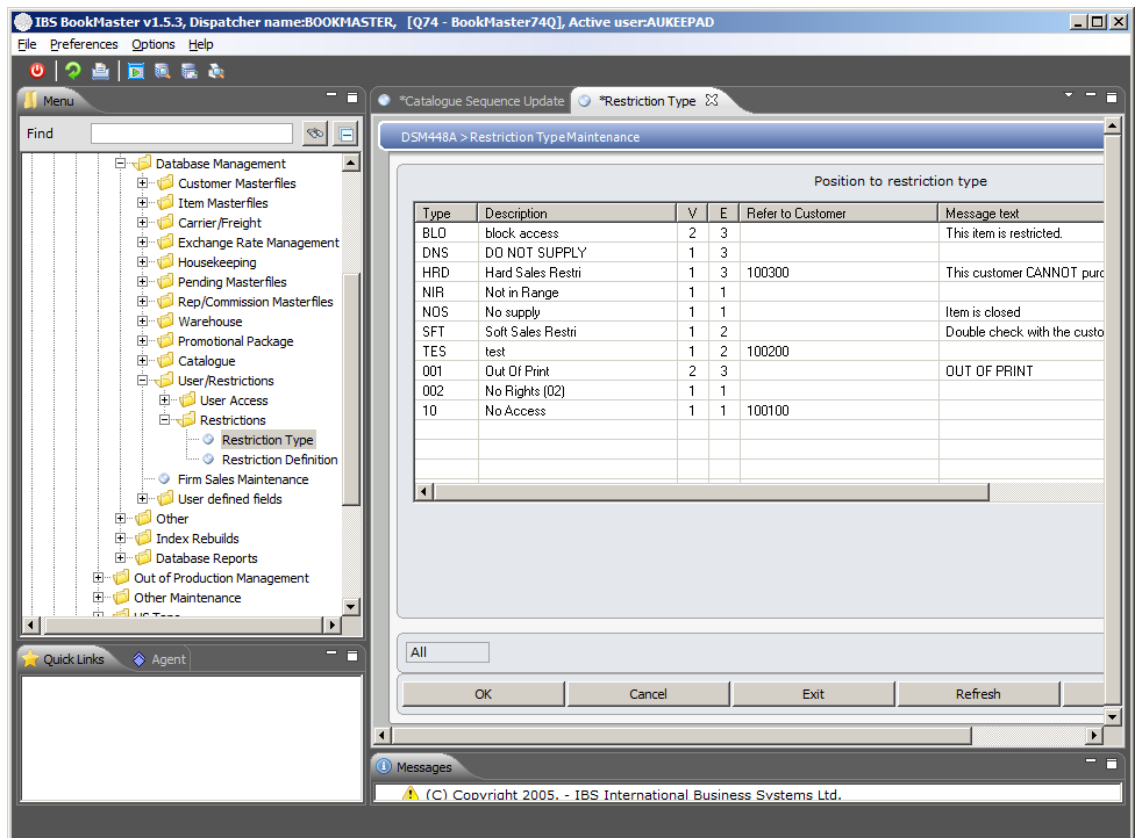
[Example 5: Display a Restriction Type Definition](#)

Example 1: Addition of a Restriction Type

This example describes how to add a restriction type.

1. Select option **Restriction Type** from Base Modules> Distribution> Masterfiles> Database Management> Database Management> User/Restrictions>Restrictions menu

DSM448A Restriction Type Maintenance panel is displayed.



Options

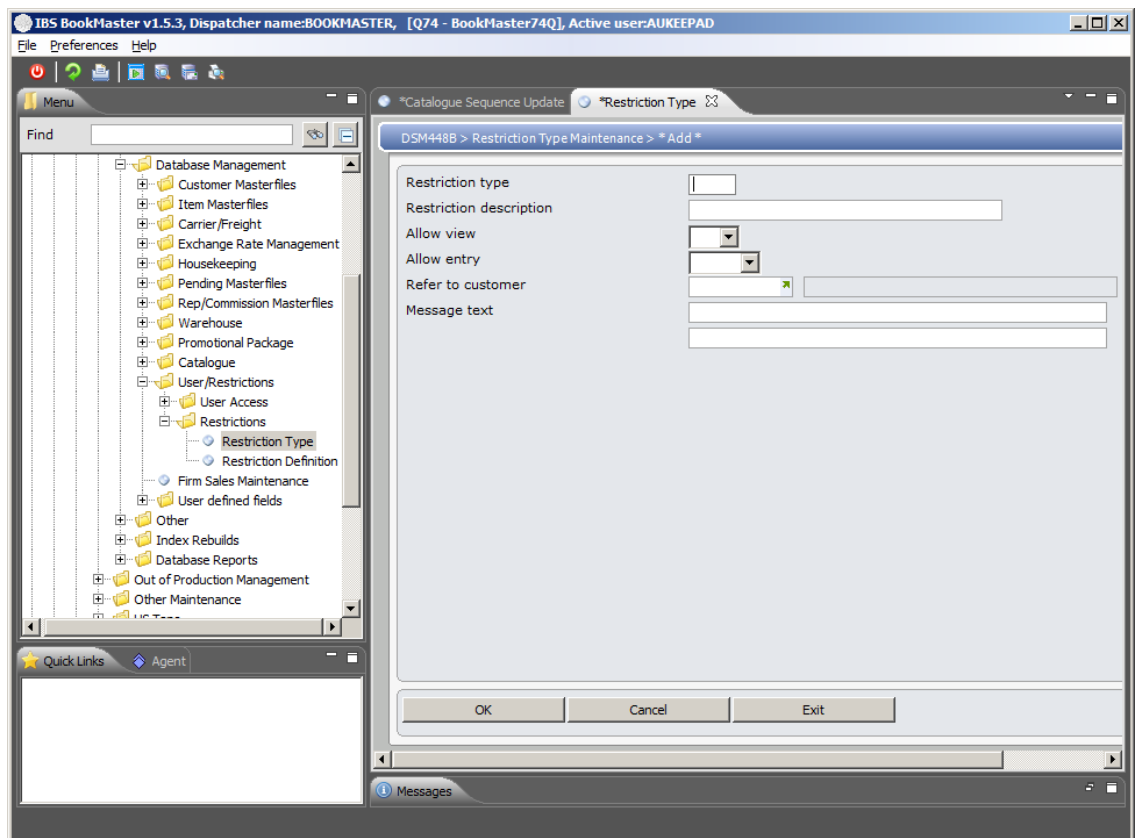
- Change** Access DSM448B Restriction Type Maintenance in change mode to maintain the restriction type details.
- Copy** Access DSM448B Restriction Type Maintenance in copy mode to copy the restriction type details to new one.
- Delete** Access DSM448B Restriction Type Maintenance in delete mode to delete the restriction type details.
- Display** Access DSM448B Restriction Type Maintenance in inquiry mode to inquire on restriction type details.

Functions

- Add** Access DSM448B Restriction Type Maintenance in add mode to add a new restriction type details.
- More messages** This function when selected displays all the lines of the message text accompanying each restriction type.

2. Click Add.

DSM448B Restriction Type Maintenance panel is displayed in add mode.



Relevant Fields

- Restriction type** This code is used to identify the restriction type to the system.

Restriction description	Enter a description relating to the type of restriction entered.
Allow view	Indicate whether a view of what is being restricted is allowed. For example, if specific titles cannot be sold to a particular branch, indicate if they still allowed to view the title by flagging this field, or indicate if the title should not appear. Titles cannot be viewed or entered in e-Commerce if this field is equal to No or the Allow entry field is equal to No. Titles can be viewed if this field is equal to No and the “allow entry” field is equal to Yes or warning.
Allow entry	This determines whether entry of the restriction is permitted. 1=Yes: entry is allowed, the system will accept the sales order 2=Warning: entry is allowed with a warning message but the system will accept the sales order. 3 =No: entry is allowed but the system forces the order line to quantities to zero.
Refer to customer	An optional entry field used to enter a “refer to” customer. This is the customer off whom goods that have been restricted can still be purchased.
Message text	Indicate the rights or reason for the restriction.

3. Key in required fields and click **OK**.

Addition of restriction type is completed.

Example 2: Changing Restriction Type Definition

This example describes how to change a restriction type definition.

1. Repeat steps **1**, **2** and **3** as in [Example 1: Addition of a Restriction Type](#)
2. Select a type and click **Change**.

DSM448B Restriction Type Maintenance panel is displayed in change mode.

3. Make required changes and click **OK**.

Example 3: Copy Restriction Type Definition

This example describes how to copy an existing restriction type definition to another.

1. Repeat steps **1**, **2** and **3** as in [Example 1: Addition of a Restriction Type](#)
2. Select a type and click **Copy**.

DSM448B Restriction Type Maintenance panel is displayed in copy mode.

3. Enter sequence number in which to copy existing details.

Example 4: Delete a Restriction Type Definition

This example describes how to delete a restriction rule definition.

1. Repeat steps **1**, **2** and **3** as in [Example 1: Addition of a Restriction Type](#)
2. Select a type and click **Delete**.

DSM448B Restriction Type Maintenance is displayed in delete mode.

3. Click **OK** to confirm deletion.

Example 5: Display a Restriction Type Definition

This example describes how to delete a restriction rule definition.

1. Repeat steps **1**, **2** and **3** as in [Example 1: Addition of a Restriction Type](#)
2. Select a type and click **Delete**.

DSM448B Restriction Type Maintenance is displayed in inquiry mode.