
DSM255 Carrier Freight Zone Maintenance

Overview

Freight Zones and their minimum freight charges can be defined for each Carrier in a nominated currency. This maintenance program enables the definition of freight charges for a particular zone. This may be a fixed amount per order value or order weight, or a percentage rate. Multiple charges can be entered by using break values.

The Carrier Masterfile is used, together with the instructions on the Carrier Zone Definition and the Zone Charges definitions, to retrieve the correct freight charges for the customer order.

Examples

This section illustrates examples concerning:

[Example 1: Add Carrier Zone Details](#)

[Example 2: Add a Carrier Zone Definition](#)

[Example 3: Add Zone Charges](#)

[Example 4: Maintain Carrier Zone Details](#)

[Example 5: Delete Carrier Zone Details](#)

[Example 6: Maintain selected Carrier Zone Definition](#)

[Example 7: Delete a Carrier Zone Definition](#)

[Example 8: Maintain selected Carrier Zone Charges](#)

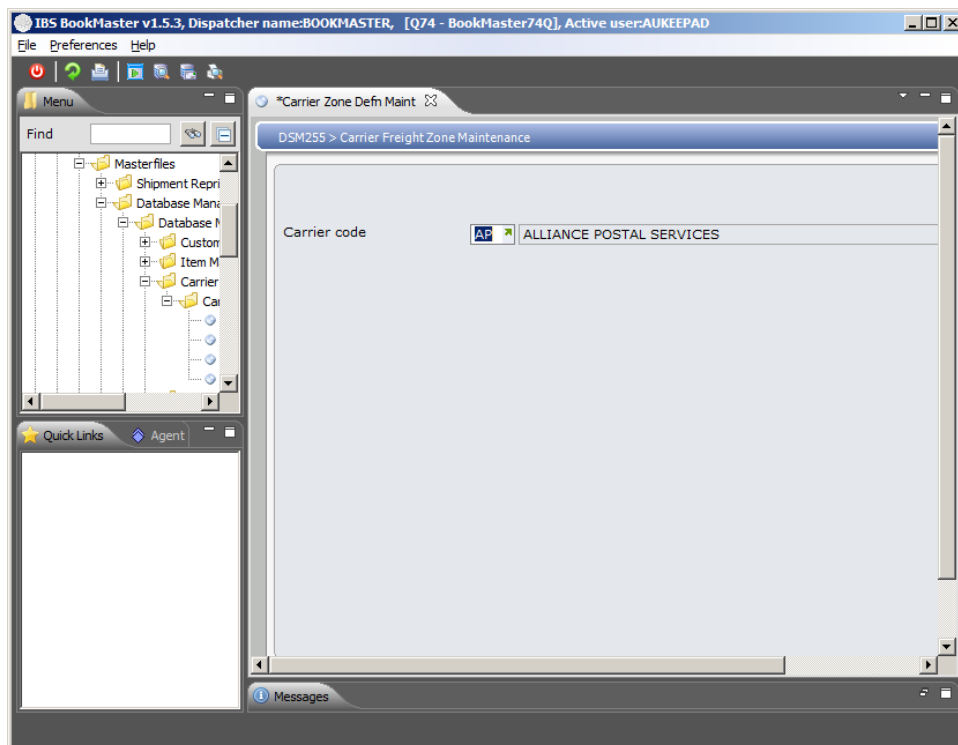
[Example 9: Delete Carrier Zone Charges](#)

Example 1: Add Carrier Zone Details

This example describes how to add carrier zone details.

1. Select option **Carrier Zone Defn Maint** from Base Modules>Distribution>Masterfiles>Database Management>Database Management>Carrier Masterfiles>Carrier Masterfiles menu.

DSM255 Carrier Freight Zone Maintenance panel is displayed.

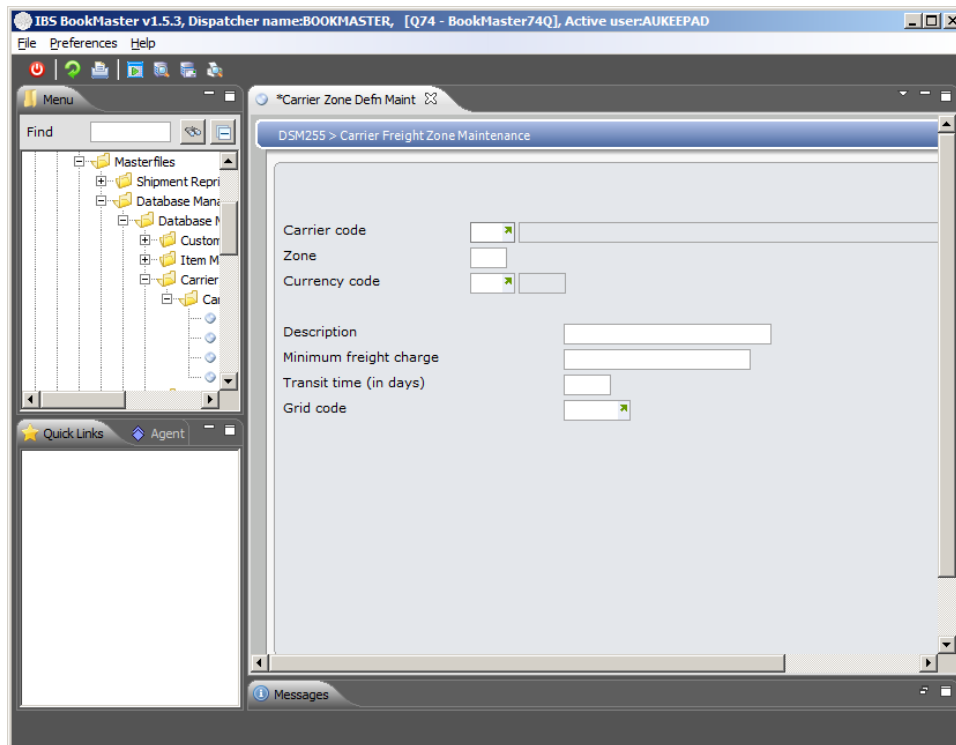


Function

Add Access Carrier Freight Zone Maintenance for addition of a new carrier zone.

2. Enter valid carrier code and click **Add**.

DSM255 Carrier Freight Zone Maintenance panel is displayed.



Relevant Fields

Zone

This field resides on the Carrier Zone Definition and the Carrier Zone Charges Maintenance programs (Database Management Module), and is used during the auto freight calculation routine.

Based on the instructions on the carrier's master file the system is able to establish in which zone the customer resides.

The carrier zone field contains a two character code which uniquely identifies a zone for this carrier to the system. Each zone holds a minimum freight charge, as well as a scale of charges, based on the weight or value of the shipment.

Currency code

This represents the currency in which transactions take place.

Description

A description of the zone is given.

Minimum freight charge

If the calculated freight for a customer order is below this minimum charge, the freight amount is adjusted up accordingly. This is the minimum amount you wish to charge for freight for the cost zone.

Transit time (in days)

The transit time is the number of days the delivery should take from the time of collection to the time of delivery, by this Carrier, within this zone. This is important for the delivery window.

Grid code

The entry of a Grid Code is mandatory. Grid codes represent a collection of Postcodes and are used to

determine into which module a carton is to be placed.

Grid code is a way to map delivery area and is used to determine the rules in assigning the carrier to deliver the products.

3. Key in required fields and click **OK**.

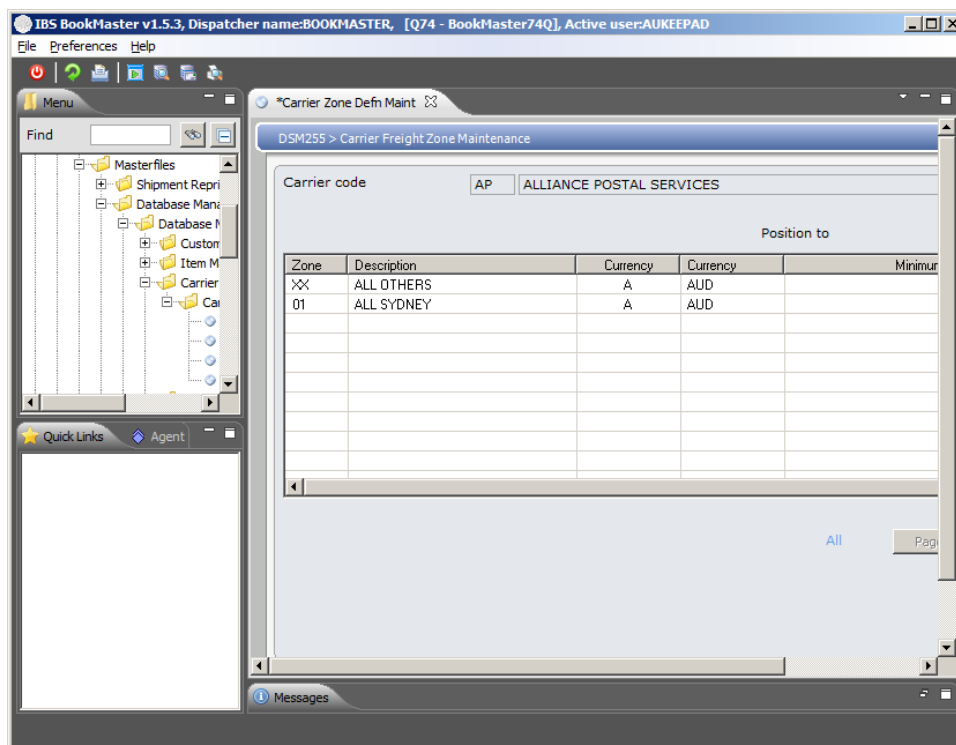
Carrier Zone Details are added.

Example 2: Add a Carrier Zone Definition

This example describes how to add a carrier zone definition.

1. Repeat step 1 as in [Example 1: Add Carrier Zone Details](#)
2. Enter existing carrier code and click **OK**.

DSM255 Carrier Freight Zone Maintenance panel is displayed.



Options

[Maintain](#)

Access Carrier Freight Zone Maintenance in change mode to maintain details of selected carrier zone.

[Delete](#)

Access Carrier Freight Zone Maintenance in delete mode to delete details of selected carrier zone.

Definition

Access Carrier Zone Definition Maintenance in add mode to add a carrier zone definition.

Charges

Access Carrier Zone Charge Maintenance in add mode to add carrier zone charges.

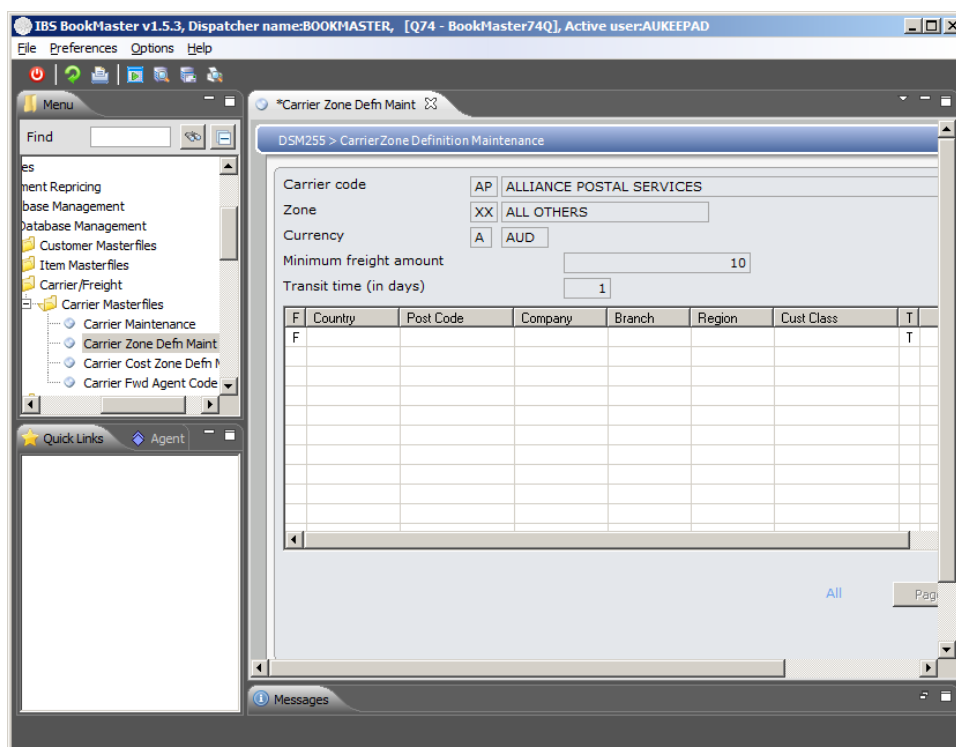
Functions

Add

Access Carrier Freight Zone Maintenance in add mode to add another carrier zone details.

3. Select a zone and click **Definition**.

DSM255 Carrier Zone Definition Maintenance panel is displayed.



Options

Maintain

Access Carrier Zone Definition Maintenance in change mode to change the details of selected carrier zone definition.

Delete

Access Carrier Zone Definition Maintenance in change mode to change the details of selected carrier zone definition.

Functions

Add

Access Carrier Zone Definition Maintenance in add mode to add a carrier zone definition.

4. Click **Add**.

If the Carrier Masterfile **HAS** been flagged to include specific codes or parameters in the Zone Definition, these fields are accessible on the following screen. If no entry is permitted in a field it means the Carrier Masterfile has not been defined with that as one of the criteria. **DSM255 Carrier Zone Definition Maintenance** panel is displayed.

IBS BookMaster v1.5.3, Dispatcher name:BOOKMASTER, [Q74 - BookMaster74Q], Active user:AUKEEPAD

File Preferences Help

Menu

Find

Masterfiles

- Shipment Repri
- Database Mana
- Database M
- Custom
- Item M
- Carrier/
- Car

Quick Links Agent

DSM255 > CarrierZone Definition Maintenance

Carrier code AP ALLIANCE POSTAL SERVICES

Zone XX ALL OTHERS

Currency A AUD

Minimum freight charge 10.00

Transit time (in days) 1

	From	To
Country		
Post code		
Company		
Branch		
Region		
Cust class		
Class type		

Messages

Relevant Fields

- | | |
|-------------------|---|
| Country | Indicate the country range for which this carrier zone definition is applicable. |
| Postcode | Specify the postcode range for which this carrier zone definition is applicable. |
| Company | Specify the company code range for which this carrier zone definition is applicable. |
| Branch | Indicate the branch range for which this carrier zone definition is applicable. |
| Region | Indicate the region range for which this carrier zone definition is applicable. |
| Cust class | Indicate the customer classifications range for which this carrier zone definition is applicable. Customer classifications group customers into categories based on various criteria, such as, buying groups, major stores etc. |
| Class type | Customers can be categorised into several customer classification types, for example, by account type, buying group and so on.

For restriction rule maintenance indicate the range of customer class types to be included in the definition. |

Class type

In Carrier Zone Definition Maintenance and Carrier Masterfile Maintenance when adding a carrier definition if the previous field is flagged as Yes to use a Customer Class, this field becomes mandatory.

Customer class type

In Pending Department Definition Maintenance the department can be authorised to review pending transactions that belong to a specified Customer Classification Type. Once the Classification Type has been selected a range of codes within that type can be nominated as applicable to the authorisation requirements.

To the pending department add a user defined reason code to be used by the Customer Classification Type pending definition. In **TMSDS/PEND-DSC** add this user defined reason code. In **TMSDS/PEND-DOC** add the document type that the pending system must recognize as part of this pending check. **TMSDS/SEQ-PDOC** must also be set up indicating the search sequence is by document type.

5. Click **OK**.

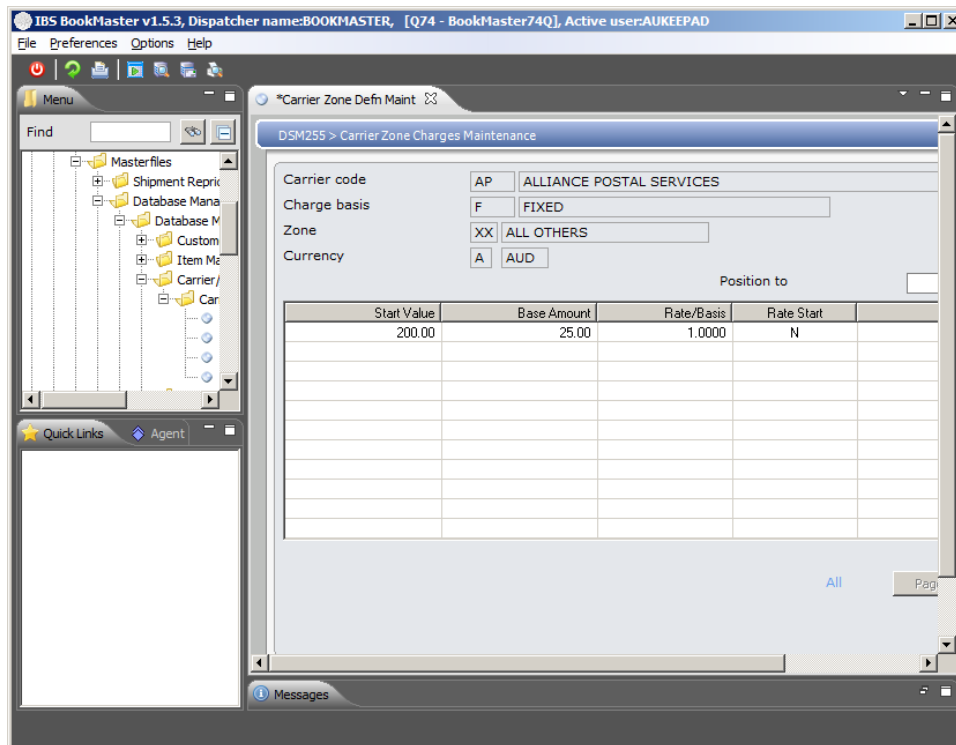
Carrier zone definition is added.

Example 3: Add Zone Charges

This example describes how to add zone charges.

1. Repeat step **1** and **2** as in [Example 1: Add Carrier Zone Details](#)
2. Select a zone and click **Charges**.

DSM255 Carrier Zone Charges Maintenance panel is displayed.



Options

[Maintain](#)

Access Carrier Zone Charges Maintenance in change mode to change the charge details of selected carrier zone.

[Delete](#)

Access Carrier Zone Charges Maintenance in delete mode to delete the details of selected carrier zone charges.

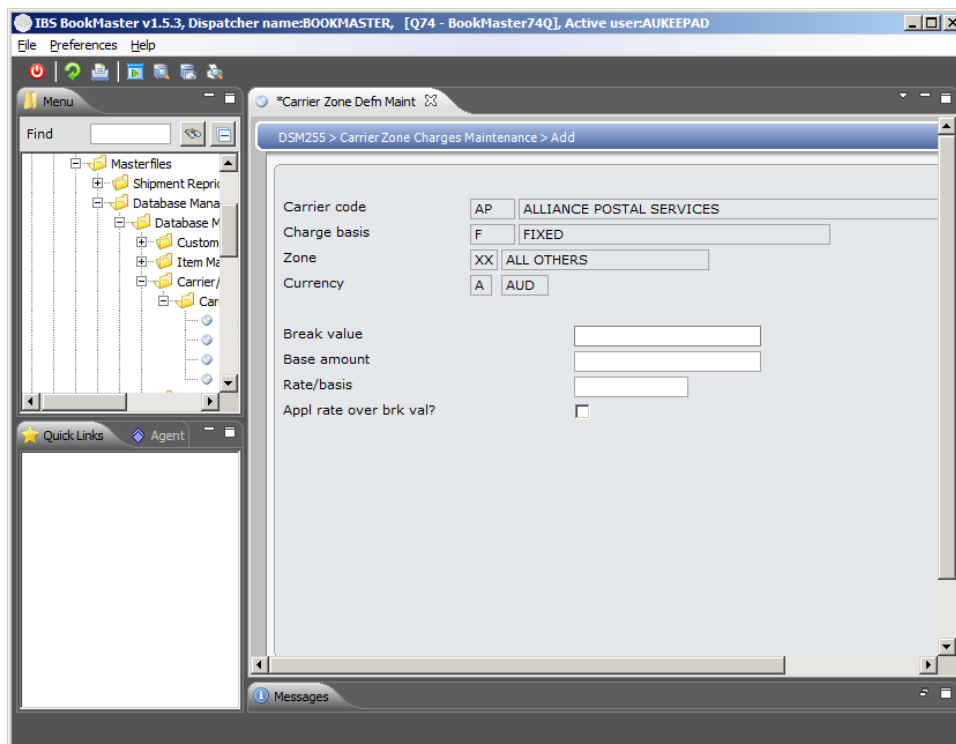
Functions

[Add](#)

Access Carrier Zone Charges Maintenance in add mode to add carrier zone charges.

3. Click **Add**.

DSM255 Carrier Zone Charges Maintenance panel is displayed in add mode.



Relevant Fields

Break value

Freight charges increase as the weight or value of the goods goes up. In this field enter the value over which additional freight charges must be calculated according to the percentage rate defined. To define multiple charges the break value fields are used.

For example:

Up to 1kg = \$10.00

From 1kg up to 5kg = \$15.00

If the Charge Basis is weight, the break values are in kilograms.

If the Charge Basis is percentage of invoice value, the break values are in amounts.

Base amount

Base amount

In Carrier Zone Charges Maintenance the base amount is the freight amount applicable to the break value.

For example:

If the break value is \$200 and the Base Amount is \$25 and the Rate Basis is 1% then for every extra dollar the invoice is over \$200, an additional 1% of the invoice value is added as freight charges.

Amount/Rate

In Agent Commission Maintenance depending on the Method of calculation chosen, either the Amount of the Flat Rate must be entered or the Percentage must be entered.

Rate/basis

Freight can be charged at a certain rate per invoice value/amount per kilogram (depending on the Charge Basis). This field is used to specify the rate as a percentage to be used as the basis for calculating freight charges.

Appl rate over brk val

This determines whether the Rate in Rate/basis applies only if the weight/value equals or exceeds the break value. Entry in this field is mandatory. This flag is used to determine if you want to apply the rate over the break value.

4. Key in required fields and click **OK**.

Charges for selected zone get added.

Example 4: Maintain Carrier Zone Details

This example describes how to maintain carrier zone details.

1. Repeat step 1 and 2 as in [Example 1: Add Carrier Zone Details](#)
2. Select a zone and click **Maintain**.

DSM255 Carrier Freight Zone Maintenance panel is displayed.

3. Make required changes and click **OK**.

Example 5: Delete Carrier Zone Details

This example describes how to delete carrier zone details.

1. Repeat step 1 and 2 as in [Example 1: Add Carrier Zone Details](#)
2. Select a zone and click **Delete**.

DSM255 Carrier Freight Zone Maintenance panel is displayed.

3. Click **Delete** to confirm deletion.

Example 6: Maintain selected Carrier Zone Definition

This example describes how to maintain carrier zone definition.

1. Repeat step 1, 2 and 3 as in [Example 2: Add a Carrier Zone Definition](#)
2. Select a zone and click **Maintain**.

DSM255 Carrier Zone Definition Maintenance panel is displayed.

3. Make required changes and click **OK**.

Example 7: Delete a Carrier Zone Definition

This example describes how to delete a carrier zone definition.

1. Repeat step **1**, **2** and **3** as in [Example 2: Add a Carrier Zone Definition](#)
2. Select a zone and click **Delete**.

DSM255 Carrier Zone Definition Maintenance panel is displayed.

3. Click **Delete** to confirm deletion.

Example 8: Maintain selected Carrier Zone Charges

This example describes how to maintain carrier zone definition.

1. Repeat step **1** and **2** as in [Example 3: Add Zone Charges](#)
2. Select a record and click **Maintain**.

DSM255 Carrier Zone Charges Maintenance panel is displayed.

3. Make required changes and click **OK**.

Example 9: Delete Carrier Zone Charges

This example describes how to delete carrier zone charges.

1. Repeat step **1** and **2** as in [Example 3: Add Zone Charges](#)
2. Select a record and click **Delete**.

DSM255 Carrier Zone Charges Maintenance panel is displayed in delete mode.

3. Click **Delete** to confirm deletion.