
DSM150 Suggested Order Cycle Reset

Overview

This program is used in DRP and Point of Sale.

In DRP when a Requirements Generation is run, reports can be used to check the resulting Suggested Order Quantities. If the figures are not acceptable, possibly due to Purchase Plan parameters needing to be maintained, these figures can be cleared from the Cycle database, the maintenance can be done to the Purchase Plan or whatever adjustments are needed can be done and the Requirements Generation can be re-run. If the Maintenance program is accessed immediately after a reset, the system displays a message indicating no details for the entered Cycle exist as the reset has cleared the Cycle database.

This program is used to clean out any purchase planning cycles that no longer require generating.

In Point of Sale, This program allows you to reset the requested order cycle for the selected hub, warehouse/satellite warehouse combination.

Examples

This section illustrates examples concerning:

[Example 1: To Reset Suggested Order Cycle](#)

Example 1: To Reset Suggested Order Cycle

This example describes how to reset suggested order cycle.

1. Select option PP Suggested Orders Cycle Reset from Base Modules> Distribution> Inventory Management> Purchasing> Purchase Planning> Plan Generation menu.

DSM150 Suggested Order Cycle Reset panel is displayed.

IBS BookMaster v1.5.6, Dispatcher name:BOOKMASTERDEMO74, [D74 - BookMasterDemo], Active user:AUANNSTE

File Preferences Help

Menu

Find

Base Modules

Distribution

Order Processing & I

Debtors & Claims

Inventory Managem

Foreign Currency M

Other

Document Printin

Period End Proce

DRP

Sales Budge

Other

Purchase

Plan

Sug

Purc

Quick Links

Agent

Templates

Attachments

Messages

Press Enter to confirm.

PP Suggested Orders Cycle Reset

DSM150 > Suggested OrderCycle Reset

Cycle number

Status

Period

Sequence

Level 1

Level 2

Level 3

Level 5

Isbn

Stock status

OK

Cancel

Exit

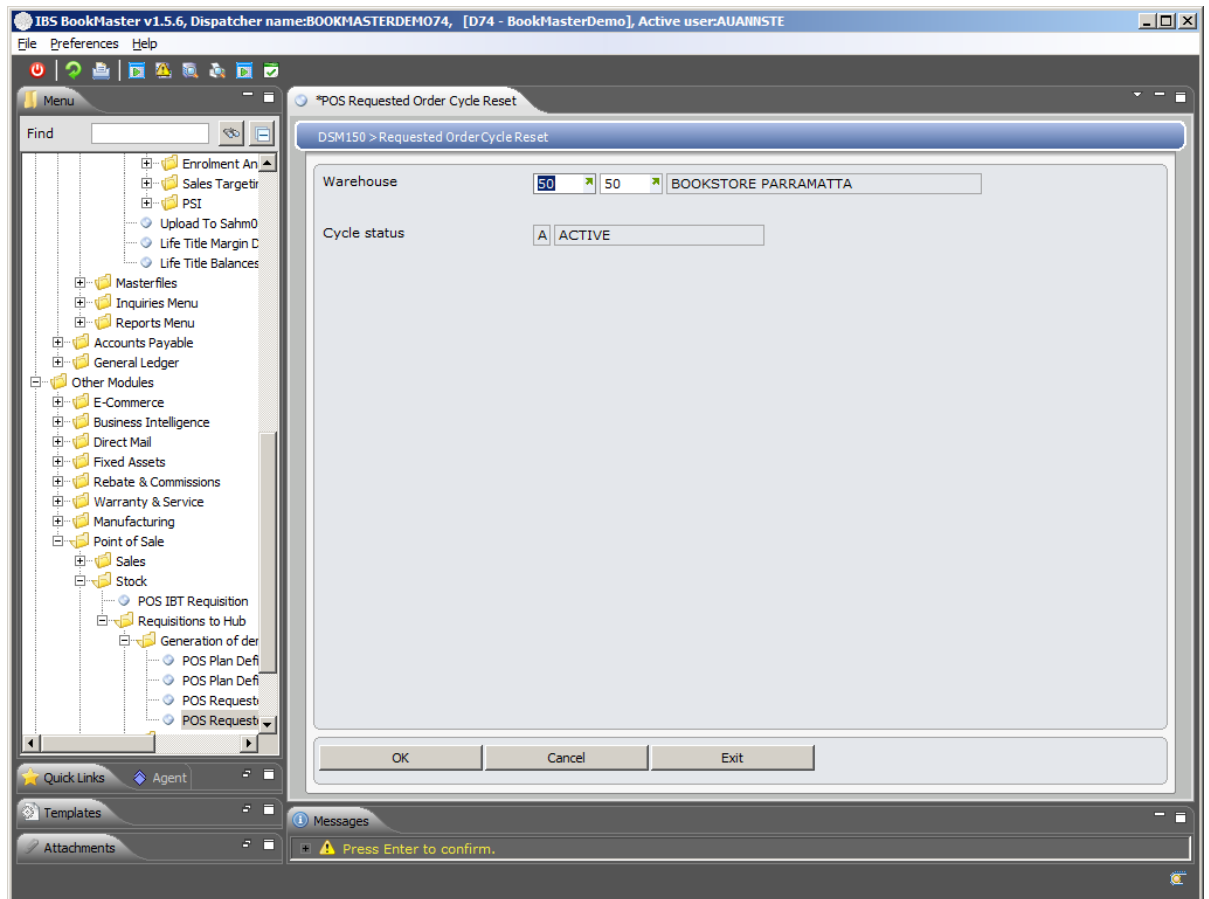
Relevant Fields

Cycle number

This is suggested order requirements cycle number which is to be reset.

2. Select cycle number which is to be reset and click **OK** to confirm the selection. Job processing panel is displayed. Change the job queue if required and select to run the process in batch or real time. Click **OK** to confirm the selection.

This process is also used in **POS Requested Order Cycle Reset**. Here this program allows reset of the requested order cycle for the selected hub warehouse/satellite warehouse combination. When selected through the POS menu, a panel is displayed.



Relevant Fields

Warehouse

Enter the hub warehouse/satellite warehouse combination to which to reset the requested order cycle.

Cycle status

Once the warehouse has been selected, status is displayed. G=Generation is in progress, A=Active, C=Complete.

This completes the process of reset of suggested or requested order cycle.