
DSM146 Suggested Order Maintenance Type 2

Overview

Details of Suggested Order Quantities per Cycle, per item, can be changed and new details can be added. As this option can only be used for National Requirements and not individual Branch/Warehouse Requirements, the warehouse is not specified.

Details are to be amended prior to the creation of purchase orders. For example the supplier can be changed, the Suggested Order Quantity can be amended and the Shipping Method can also be changed.

Examples

This section illustrates examples concerning:

[Example 1: To Change Details within an Existing Cycle](#)

[Example 2: To Add an Item to Suggested Order](#)

[Example 3: To Delete Suggested Order Item Details](#)

[Example 4: Price & Availability Inquiry for an Item](#)

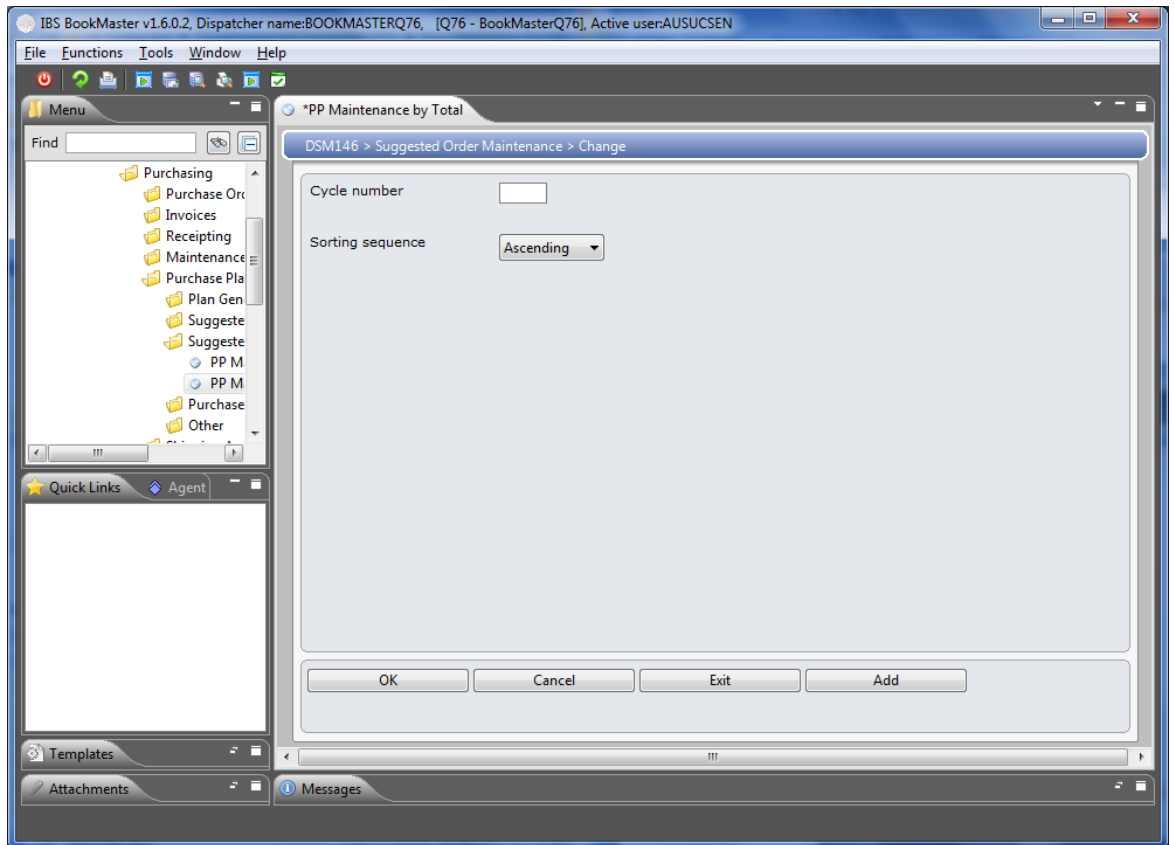
[Example 5: To Maintain Warehouse Stock Level Definition](#)

Example 1: To Change Details within an Existing Cycle

This example describes how to maintain suggested order details within an existing cycle.

1. Select option **PP Maintenance by Total** from Base Modules> Distribution> Inventory Management> Purchasing> Purchase Planning> Suggested Orders Maintenance menu.

DSM146 Suggested Order Maintenance panel is displayed.



Functions

Add/Change

This function is used to add new cycle for suggested orders. By default it is in change mode.

Relevant Fields

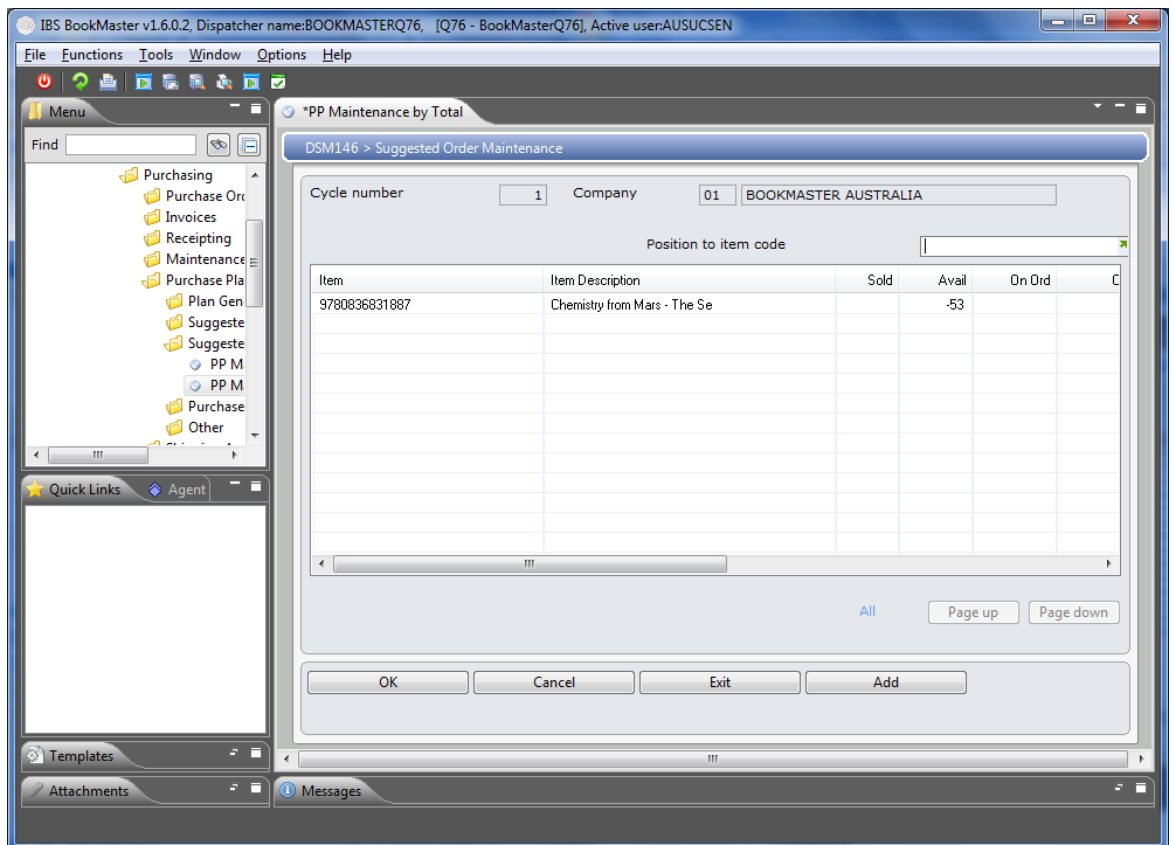
Cycle number

This is cycle number for which to make changes.

Sorting sequence

Select whether the items contained in this cycle number are to display in ascending or descending sequence.

2. Select cycle number and sorting sequence and click **OK** to confirm the selection. Panel showing all items included in the cycle are displayed.



Functions

[Add](#)

Access DSM147 Suggested Order Maintenance in add mode to add new suggested order.

[More detail](#)

This function is used to display more information for the item.

Options

[Change](#)

This option is used to access each listed item for review of suggested order details. This displays warehouses nominated to be included in the suggested order maintenance.

[Delete](#)

This option is used to delete selected item record.

[P&A Inq](#)

Access DSI311 Price and Availability inquiry to display pricing details as well as stock availability details.

[Min/Max](#)

Access DSM070 Warehouse Stock Levels Definition Maintenance to maintain the details on the Warehouse Stock Levels Definition File for the item selected.

Relevant Fields

[Item](#)

This is the item included in the suggested order cycle.

[Sold](#)

This is the sold amount.

[Avail](#)

This is the stock on hand figure at the time of generating suggested order quantities.

[On ord](#)

If there are existing purchase orders not yet received and the on order figure is included in the calculations for the purchase plan used, then this figure is displayed.

Cust ords	The various types of purchase orders included in the purchase plan parameters are consolidated and the quantities displayed in this column.
Min	If the purchase plan is maximum/minimum re-order plan by warehouse, the minimum and maximum quantity is displayed.
Max	If the purchase plan is maximum/minimum re-order plan by warehouse, the minimum and maximum quantity is displayed.
Supplier	In suggested order maintenance, supplier defaults from the supplier file. The sequence of suppliers is followed taking into account requirements like a match to the shipping method previously selected. Which supplier to be selected depends on the criteria set in the purchase plans. It is usually the preferred supplier.
Ord	This quantity is based on the parameters set on the purchase plan used for this cycle. It can be maintained if required.

3. Select item and click option **Change**. Make the necessary changes. Click **OK** to confirm the changes.

Example 2: To Add an Item to Suggested Order

This example describes how to add new item to a suggested order.

1. Repeat steps 1 and 2 from [Example 1: To Change Details within as Existing Cycle](#). Click function **Add**. Following panel is displayed.

DSM147 Suggested Order Maintenance add panel is displayed.

Please refer to **DSM147 Suggested Order Maintenance** for further information.

Example 3: To Delete Suggested Order Item Details

This example describes how to delete item details for an suggested order.

1. Repeat steps 1 and 2 from [Example 1: To Change Details within as Existing Cycle](#). Select item and click option **Delete**. Following panel is displayed.

DSM147 Suggested Order Maintenance delete panel is displayed.

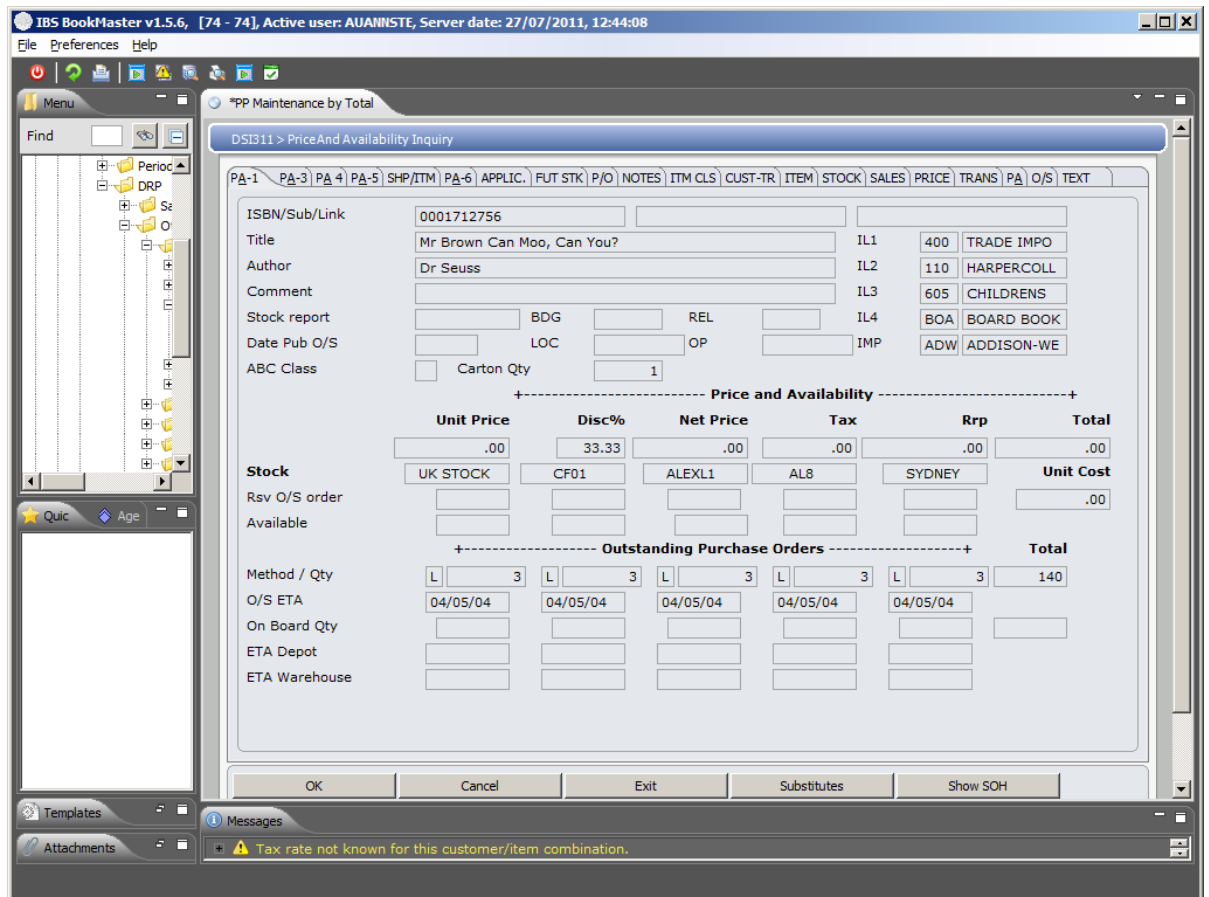
Please refer to **DSM147 Suggested Order Maintenance** for further information.

Example 4: Price & Availability Inquiry for an Item

This example describes how to view price and availability details for selected item.

1. Repeat steps 1 and 2 from [Example 1: To Change Details within as Existing Cycle](#). Select item and click option **P&A Inq**. Following panel is displayed.

DSI311 Price And Availability Inquiry main panel is displayed.



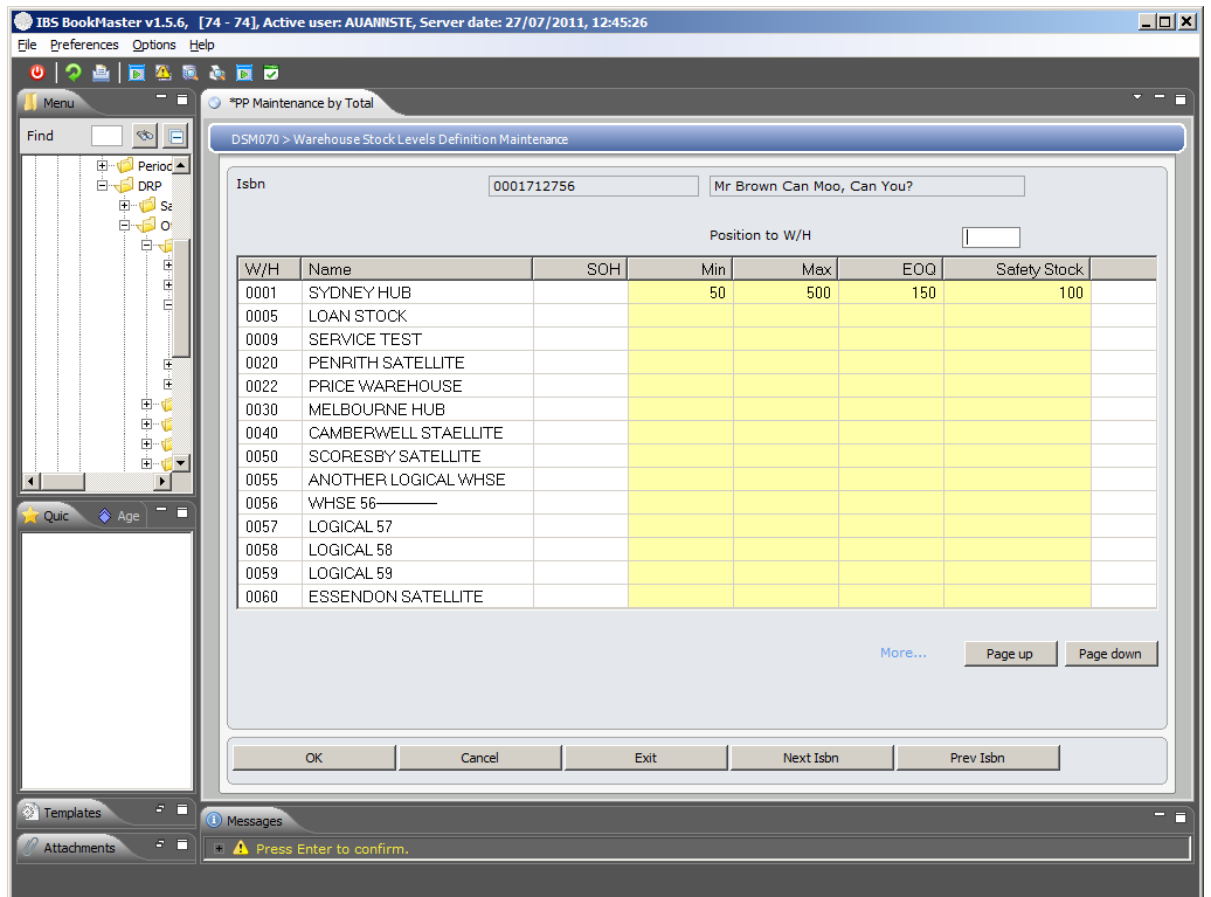
Please refer to **DSI311 Price And Availability Inquiry** for further information.

Example 5: To Maintain Warehouse Stock Level Definition

This example describes how to maintain warehouse stock level definitions for particular item.

1. Repeat steps 1 and 2 from [Example 1: To Change Details within as Existing Cycle](#). Select item and click option **Min/Max**. Following panel is displayed.

DSM070 Warehouse Stock Levels Definition Maintenance main panel is displayed.



Please refer to **DSM070 Warehouse Stock Levels Definition Maintenance** for further information.