
DSM000 DS Data Queue Processor Manager

Overview

This program displays current job status, job number and library the status applies. This program maintains data queue status. Interface management control file is used to drive this queue via the standard order processing queue.

Examples

This section illustrates examples concerning:

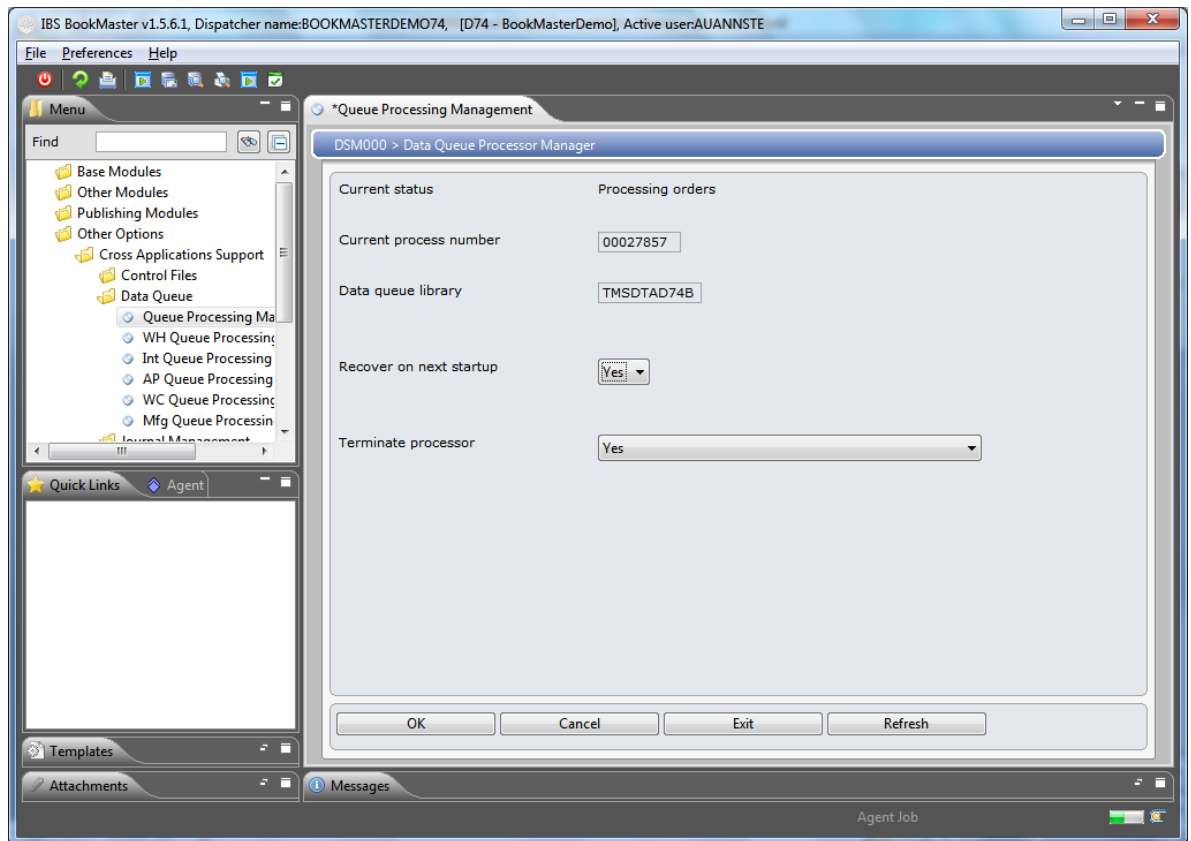
[Example 1: Activation/deactivation of data queue processor.](#)

Example 1: Activation/deactivation of data queue processor

This example describes how to activate or deactivate data queue.

1. Select option **Queue Processing Management** from Other Options> Cross Applications Support> Data Queue menu.

DSM000 Data Queue Processor Manager panel is displayed.



2. If the status is active (processing orders) you can deactivate it by setting Terminate processor to 'Yes'. To activate set Activate processor as 'Yes' and click OK. Data Queue Processor will be activated.

Cross Reference

- DSM012 - Interface - data queue processor manager.
- DSO012 - Interface - Data Queue processor.
- DSCEOD - End of day processing.