

---

# DSE108 RF Dispatch Confirmation

---

## Overview

At this stage of the dispatching process, all cartons for an order have been accounted for and are at Dispatch Stage 2 for the final processing. This option is used to scan or enter the label barcode, invoice barcode and carton barcode. This completes the process of dispatching the goods onto the truck and flags the order with a status of C for Complete.

Note. This is necessary only if RF picking or Pick/Pack Confirm by Container is used. And is not required where Scan Pack is the last time a carton is handled.

---

## Explanation

Consignment Notes can be consolidated and automatically generated by establishing flags on TMSDS/EDI-CONN. If auto generate is in place the consignment note will print when the last carton has been scanned. TMSDS/PRT-CON 2=Dispatch Stage 2

This stage also provides for a program call (DSE108A) via TMSDS/WI-PGM, for the following parameters: -Containers (10), major store (3), customer (6), command (2). This prompts the dispatcher to check each Title for pricing.

You can decide whether a scan of each Title is necessary. This is done by checking for selected customers and checking the carton contents to find all Titles that are not priced. If any no price Titles are found then force the user to scan all Titles in the carton, and after each scan either display a message saying the Title is already priced or print a zebra pricing label to be attached to the Title. Then return to processing through the rest of DSE108 as normal.

This stage validates the cartons scanned to check whether the warehouse interface has completed calculating the number of cartons. It does this by checking that the number of cartons does not equal to 99999 as this number is the temporary number assigned by the warehouse interface (WIO200) while it calculates the correct number of cartons. This is required due to the timing problem where the warehouse interface may be updating the cartons while the Dispatch Stage 2 is scanning a carton on this order.

A new carton number and carton details can be automatically created from a batch of small orders. This in turn creates separate carton details for each order in the batch and the newly generated numbers will become part of the relevant carton tracking information. All cartons with a purpose equal to BCH are split into a separate carton per order. This is performed at Dispatch Stage 1 only. The carton number is allocated automatically by utilizing the number file WH-CNTNR and TMSWH/PCK-RPCK. The number file WH-CNTNR allocates a seven digit number to the carton and TMSWH/PCK-RPCK allocates a prefix to the number.

Dispatch Stage 2 need not be used in environments where no dispatch staging area exists, that is, where scan pack is the last time a carton is handled. The Packer and Checker can be entered and when Confirm Container is selected the carton weight can be captured (Control File TMSWH/ENT-WGHT determines when to input carton weights). When Complete Order is selected to complete the picking slip and invoice is produced.

This stage also provides for an additional option in TMSDS/PRT-INV to print invoices at scan pack time (Flag =4) this works with Pick/Pack by Container (WHE100).

Accommodates the picking merge and invoice merge, as setup in control file TMSDS/CM-OCON.

For merging for ASN orders, OCON needs to be set up as 'Automatic'" invoicing.

## Examples

This section illustrates examples concerning:

[Example 1: Dispatch Confirmation](#)

[Example 2: Change Carrier](#)

[Example 3: Override Weight](#)

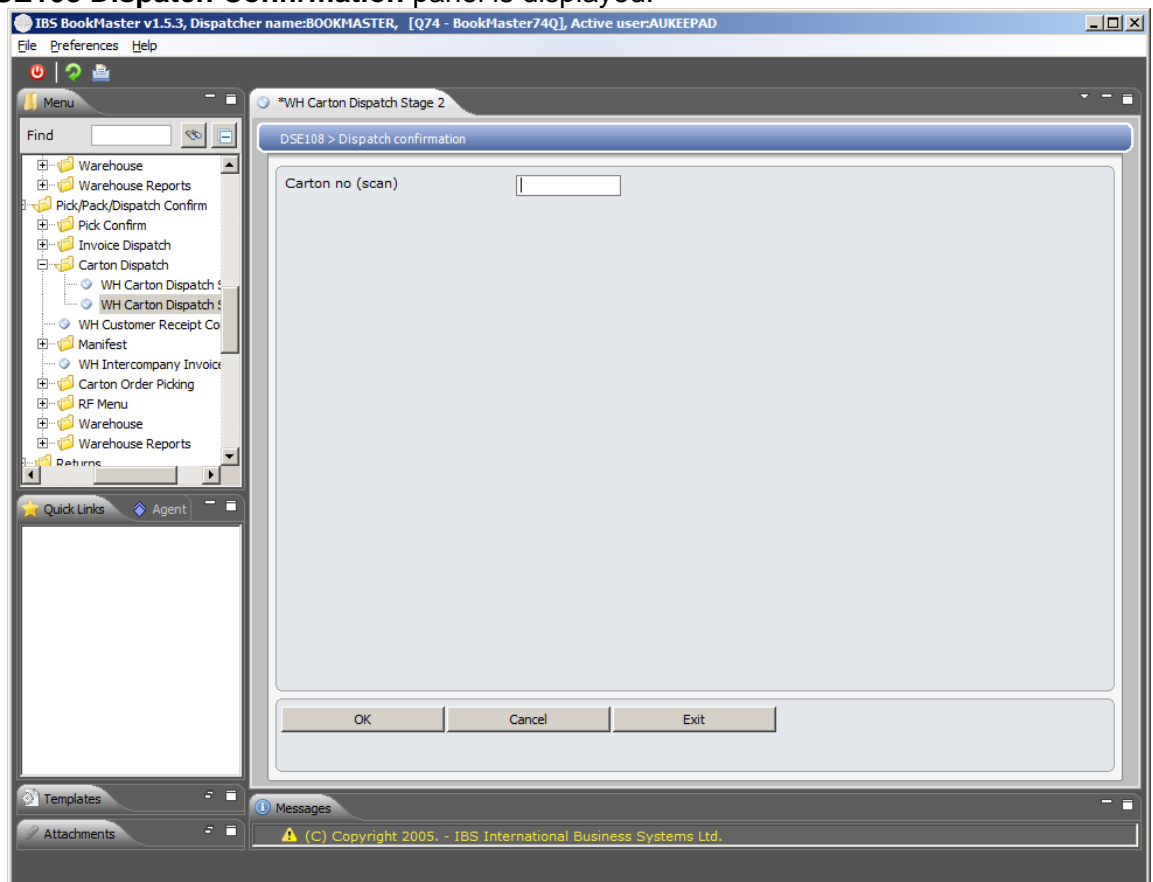
[Example 4: View Instructions](#)

### Example 1: Dispatch Confirmation

This example describes how to confirm dispatch.

1. Select option **WH Carton Dispatch Stage 2** from Base Modules> Distribution> Inventory Management> Warehouse Management> Warehouse Control> Pick/Pack/Dispatch Confirm> Carton Dispatch menu.

DSE108 Dispatch Confirmation panel is displayed.



#### Relevant Fields

**Carton no**

This is the carton number scanned from the barcode on the

carton label.

2. Click **OK** to confirm the scanned and entered details.

**DSE108 Dispatch Confirmation** panel is displayed.

#### Functions

[Change Carrier](#)

The Carrier code can also be changed by clicking Change carrier.

The next screen will display. This displays the current carrier code and name.

[Override Weight](#)

From the Despatch confirmation screen select the option Weight override.

The next screen will display to enter the new weight value.

[View Instructions](#)

If there is a warehouse instruction, the system will display the following message Warehouse instruction exists, Press F10 to view. To view this instruction, select F10 and the next screen will display.

#### Relevant Fields

[Label no](#)

This is the label number scanned in from the label. It starts at the 13th character. When label validating is in place, TMSWH/VALP-LAB must have WHO400 entered as the validating program. If not validating remove this program from control file.

[Invoice](#)

This is the invoice number scanned from the barcode. This field is mandatory.

3. Key in required fields and click **OK**.

Dispatch is confirmed.

---

### Example 2: Change Carrier

This example describes how to change the carrier.

1. Repeat steps **1** and **2** as in [Example 1: Dispatch Confirmation](#)
2. Click Change carrier.

**DSE108 Dispatch Confirmation** panel is displayed.

---

### Example 3: Override Weight

This example describes how to override weight.

1. Repeat steps **1** and **2** as in [Example 1: Dispatch Confirmation](#)
2. Click Override weight.

**DSE108 Dispatch Confirmation** panel is displayed.

---

### Example 4: View Instructions

This example describes how to view instructions.

1. Repeat steps **1** and **2** as in [Example 1: Dispatch Confirmation](#)

2. Click View instructions.

**DSE108 Dispatch Confirmation** panel is displayed.

---

## Cross Reference

- WHE100B – Complete order confirmation
- WHE105B – Scan Pack by run
- WHE108 – RF Pre-despatch confirmation - (Decision Point 1)
- WHE110A – Carton dispatch confirmation
- WHE180F – Pick/Pack confirm - Complete order confirmation
- WIO200 – Warehouse interface Rapid pick upload