

---

# DSE107 Dispatch Confirmation: by Carton

---

## Overview

This function handles barcode scanner style input of multiple cartons being dispatched with tracker details being recorded against the original transaction.

Depending on how the menu call is established this program can:

- Display a dispatch screen, designed for quick entry by small handheld scanners bypassing the detail screen. Dispatch is confirmed when the Tracking Reference is scanned.
- Allow for quick dispatch of multiple documents in the one consignment. A More Documents function is used to enter multiple document numbers for the one consignment. The header details if Tracking Reference and Carrier will be the same for each document. No detail screen will be displayed and dispatch is confirmed from the Header Screen.

---

## Examples

This section illustrates examples concerning:

[Example 1: Record Dispatch Details](#)

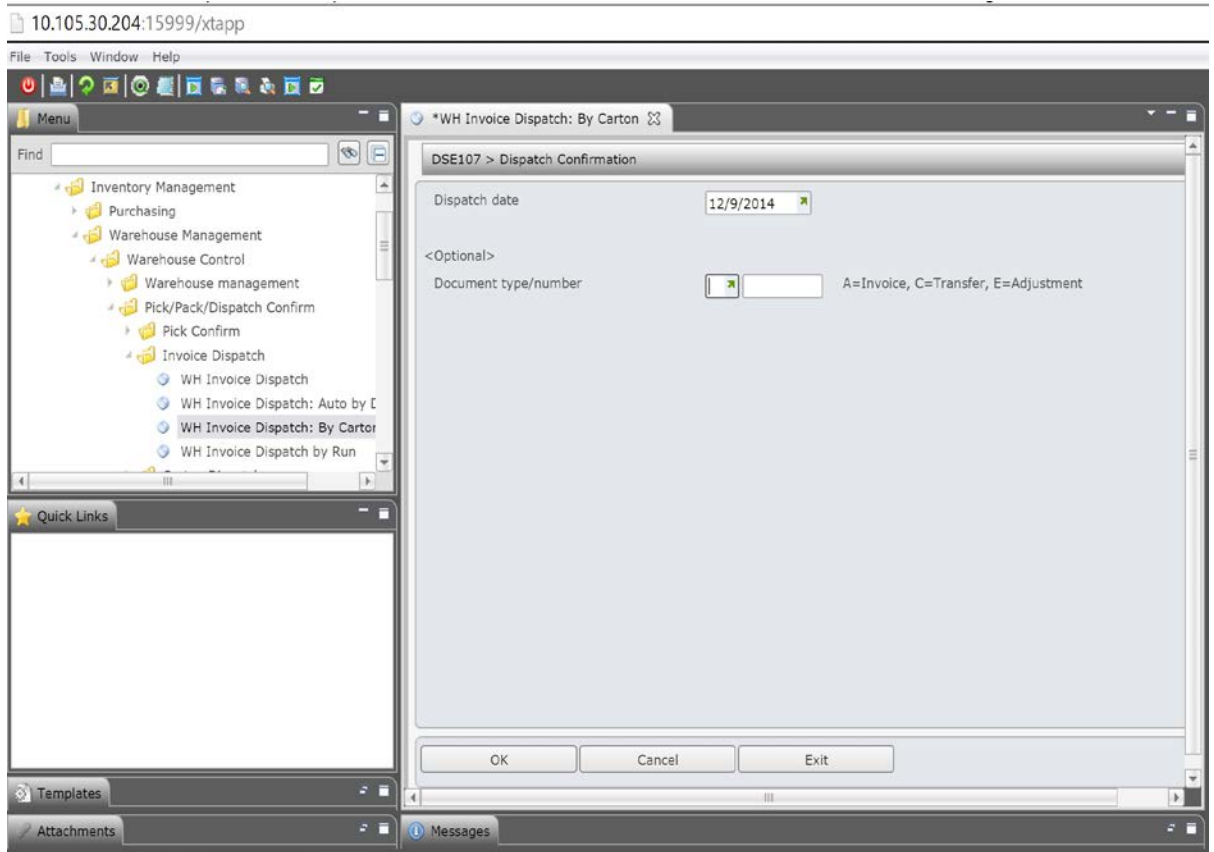
---

### Example 1: Record Dispatch Details

This example describes how to record dispatch details.

1. Select option **Invoice Dispatch: By Carton** from Base Modules> Distribution> Inventory Management> Warehouse Management> Warehouse Control> Pick/Pack/Dispatch Confirm> Invoice Dispatch menu.

**DSE107 Dispatch Confirmation: By Carton** selection panel is displayed.



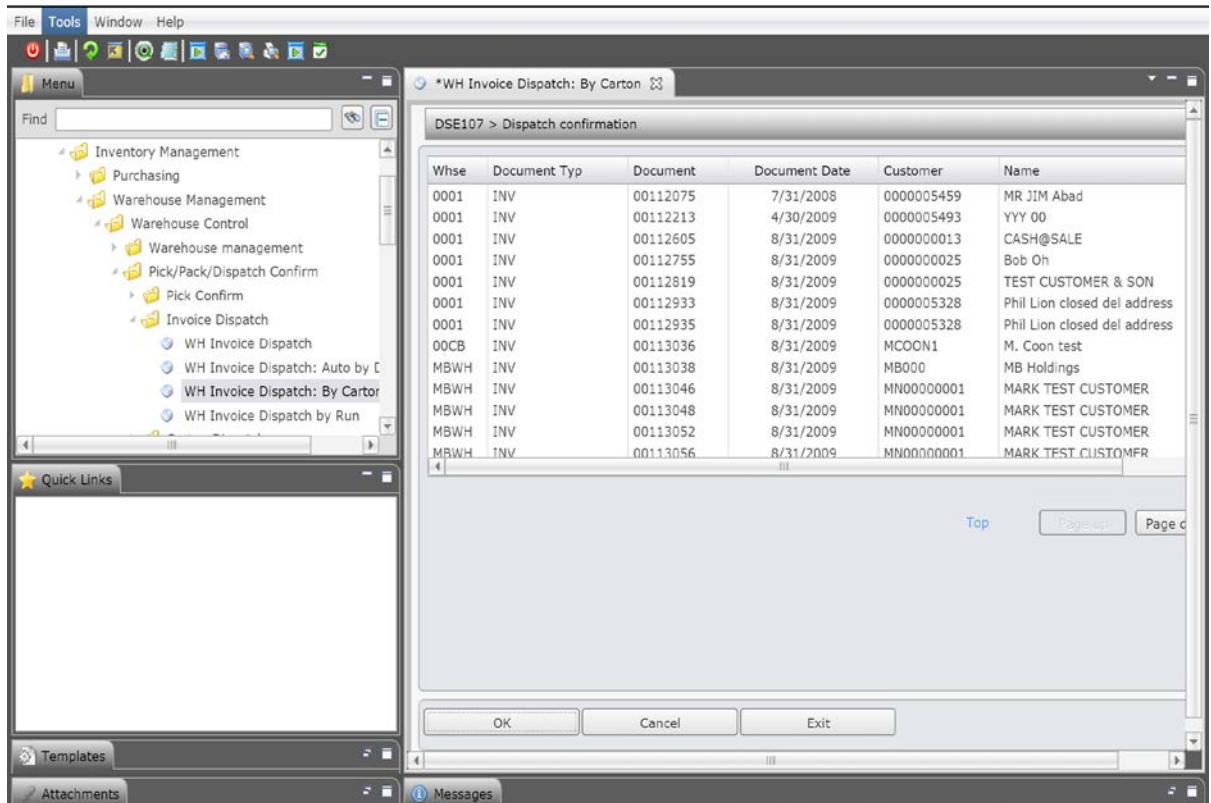
## Relevant Fields

**Dispatch date** The date for which you want to confirm invoice dispatch by carton.

**Document type/number** An optional entry of the document type and number belonging to the goods you want to dispatch.

2. Key in required fields or leave blank to select all and click **OK**.

**DSE107 Dispatch Confirmation: By Carton** main panel is displayed.



## Options

### Select

This is used for the selection of a document for dispatch confirmation.

## Relevant Fields

### Document type/number

Optionally enter the document type and document number/s, or leave blank to select all. Valid document types are: A=Invoice as processed via Sales Order Entry

C=Transfer as processed via DSE005A TRANSFER PICKING SLIP

E=Adjustment as processed via DSE005A WRITE OFF PICKING SLIP

Although you can search for a list of valid Document Types, selecting a code other than A, C or E will result in the system displaying the message Invalid Transaction Type.

### Date

Date of dispatch/order checking. The dispatch date is defaulted to the current system date but may be overridden.

### Customer

Customer

The Customer Account applicable to the payment or transaction is entered. Note that a closed account can still have cash allocations. Note that a closed account can still have cash allocations.

Enter customer number on which to print details

In Selective Customer History Report, select the customers for which to print follow up notes.

3. Select transaction to be dispatched.

**DSE107 Dispatch Confirmation: By Carton** panel is displayed.

10.105.30.204:15999/xtapp

File Tools Window Help

Menu

Find

- Inventory Management
  - Purchasing
  - Warehouse Management
    - Warehouse Control
      - Pick/Pack/Dispatch Confirm
        - Pick Confirm
        - Invoice Dispatch
          - WH Invoice Dispatch
          - WH Invoice Dispatch: Auto by I
          - WH Invoice Dispatch: By Carton
          - WH Invoice Dispatch by Run

Quick Links

Templates

Messages

\*WH Invoice Dispatch: By Carton

DSE107 > Dispatch Confirmation

Document number A 00112755 NORMAL ORDER

Warehouse 0001 SYDNEY

Deliver to 0000000025 Bob Oh

Number of cartons

Labels/carton

Total weight

Carrier MK TEST CARRIER CB 'K' INVOICE WE

Picker  Date

Tracking reference

Print con-note No

Volume

Volumetric weight

Number of pallets

Forwarding agent

Delivery run

Delivery stop

Truck number

Packer  Date

Dispatcher/checker  Date

**Relevant Fields**

Number of cartons

The number of cartons you are dispatching.

Total weight

The total weight of the goods for dispatch.

Tracking number

A tracking number is used to track the goods through the warehouse.

4. Click **OK**.

Dispatch gets confirmed.