

---

# DSE081 IBT Receipt Entry

---

<i>Overview</i>	This inter-warehouse transfer function is used by satellites to receive stock from hubs once a requisition has been made.
<i>Purpose</i>	This panel allows you to: <ul style="list-style-type: none"><li>IBT Receiving</li><li>Outstanding Item Details Inquiry</li><li>Transaction Details Inquiry</li></ul>

---

## Explanation

It also enables the user to monitor the stock received via stock transfers into the designated warehouses.

On receipt of the stock, the appropriate warehouse location can be determined, as well as the stock quantity to be allocated to the selected location.

The pricing is determined by the Hub. The stores (Satellite) selling prices and unit pricing is automatically calculated and can be modified during the receiving process.

The new selling prices will come from the current hub selling prices using the Price and Tax Retrieval program DSO936.

Satellite selling prices will be automatically created based on the selling prices entered here using DSO926 Extended Price Update. Secondary prices can be updated automatically from primary prices using the formula from the Auto Pricing module. Primary prices are created in DSAPD00P Auto Pricing Details File during the receiving process. Then DSO300 Auto Pricing - Price Calculation is called to create the secondary prices. At the end of the receiving process DSO920 Auto Price Update is called to update the auto price on the Price Masterfile. This allows the user to review the impact on the Gross Profit of any change in the landed cost from the latest IBT receipts.

The new unit costs will come from the unit cost of the product being transferred from the hub.

Movements are allowed out of a location even if it exceeds the number of different items specified on the dimension definition maintenance.

---

## Examples

This section illustrates examples concerning:

[Example 1: IBT Receiving](#)

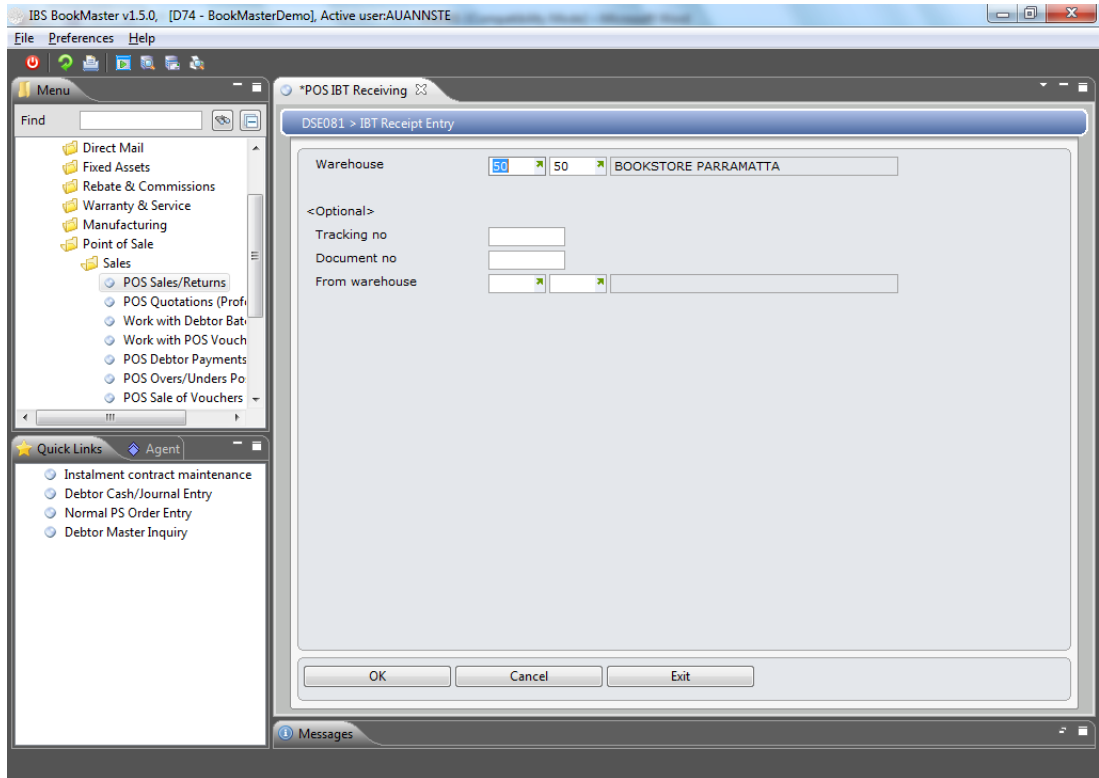
[Example 2: Outstanding Item Details Inquiry](#)

[Example 3: Transaction Details Inquiry](#)

## Example 1: IBT Receiving

This example describes how to perform IBT receiving.

1. Select menu option **IBT Receiving** from **Point of Sale** menu.
2. **DSE081 IBT Receipt Entry** selection panel is displayed.

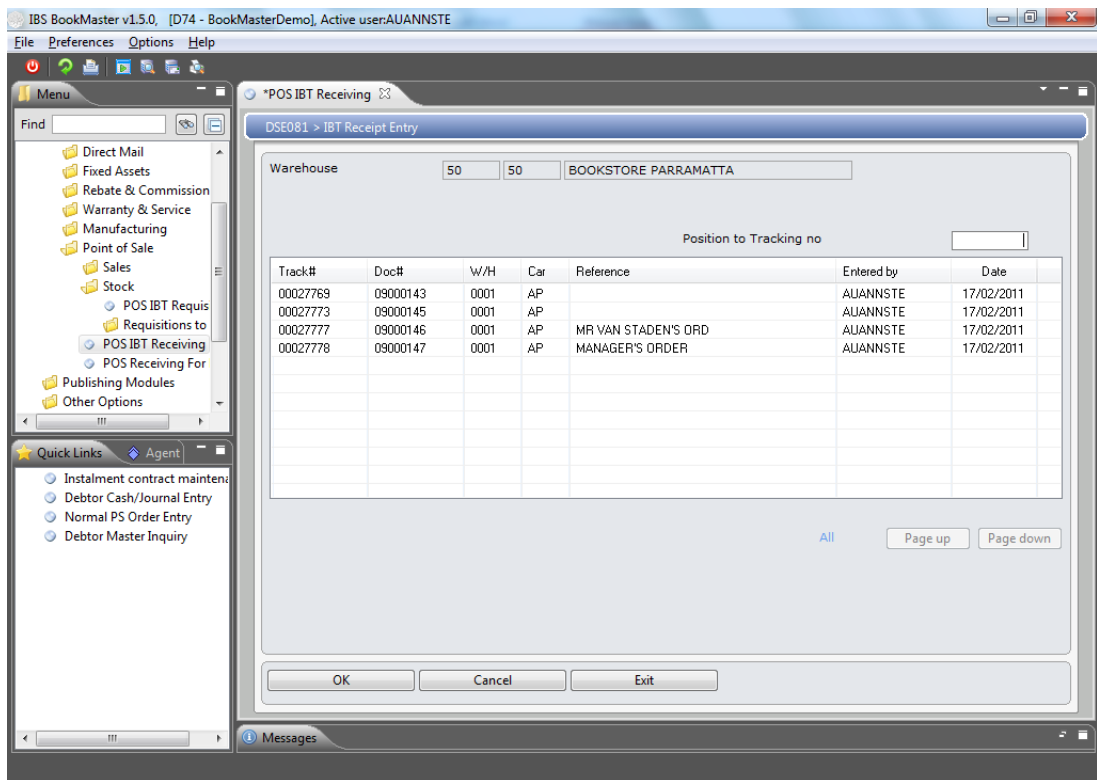


### Relevant Fields

#### Warehouse

Enter the Warehouse into which stock is to be received.

3. Key in required fields and click **OK** to view all outstanding transfers awaiting receipt in the selected warehouse.
4. **DSE081 IBT Receipt Entry** main panel is displayed.



## Options

[Select](#)

Access DSM147 Suggested Order Maintenance to change the selected item details.

## Relevant Fields

[Document number](#)

If entering a return the original invoice number must be entered. Press Override first to allow entry in this field.

[Warehouse](#)

Enter the HUB warehouse code or range of codes to be included in the analysis.

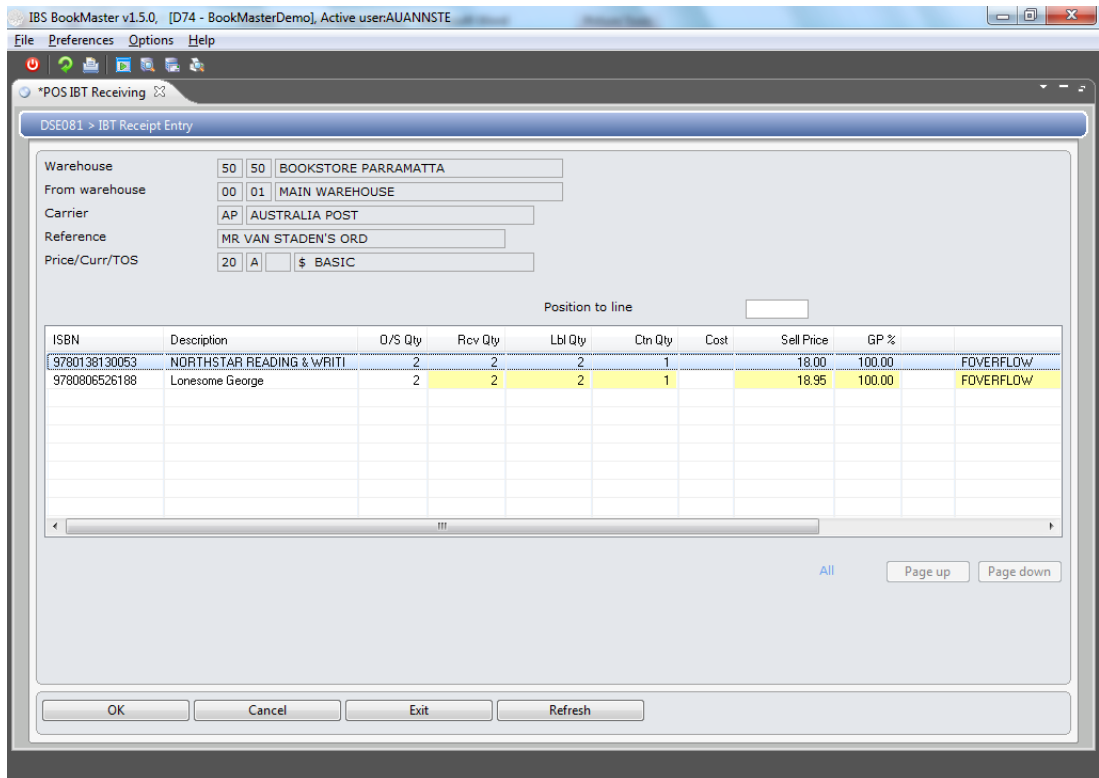
[Carrier](#)

This determines the carrier transferring the stock.

[Reference](#)

A reference is given to the order/stock transfer/voucher so it is easy to track.

5. Select a record and click **Select**.
6. DSE081 IBT Receipt Entry panel is displayed.



## Options

### Line Details

Access DSI076 Outstanding Item Detail Inquiry to inquire on outstanding item details.

### Orig Document

Access DSI120 Transaction Inquiry to inquire on transaction details.

## Functions

### More Details

This is used to get more item and location details.

## Relevant Fields

### Item

Enter or scan the ISBN being purchased by the customer. TMSDS/OM-VI determines whether to check for an alternate item or barcode if the given ISBN does not exist on the Title Masterfile. In IBT Receipt Entry the Item defaults and cannot be overridden.

### Received quantity

The quantity that can be received defaults.

### Label quantity

When the stock has been receipted labels will be printed.

### Carton quantity

If selected to do so on the previous screen the carton quantity for each title defaults on the screen. This is the amount of cartons received for each title.

### Cost

The current cost and selling prices will be from the satellite warehouse. The new unit costs will come from the unit cost of the product being transferred from the hub.

### Sell price

The current cost and selling prices will be from the satellite warehouse. The new selling prices will come from the current hub selling prices using the price retrieval program. The new selling prices can be modified prior to receipting.

GP%

The current GP% displays and the new GP% is computed.  
The new GP% can be modified prior to receipting.

7. Key in required fields and click **OK** to confirm the receipt entry.

---

### Example 2: Outstanding Item Details Inquiry

This example describes how to inquire on outstanding item details.

1. Repeat steps **1**, **2** and **3** as in [Example 1: IBT Receiving](#)
2. Select a record and click **Line Details**.

**DSI076 Outstanding Item Detail Inquiry** panel is displayed.

Refer DSI076 for the further details.

---

### Example 3: Transaction Details Inquiry

This example describes how to inquire on transaction details.

1. Repeat steps **1**, **2** and **3** as in [Example 1: IBT Receiving](#)
2. Select a record and click **Orig Document**.

**DSI120 Transaction Inquiry** panel is displayed.

Refer DSI120 for the further details.