

---

# DSE075 Inter-warehouse in transit Stock Transfer

---

|                 |   |
|-----------------|---|
| <i>Overview</i> | The Stock Transfer program is used for inter-warehouse stock transfers as well as stock transfers between internal warehouses. This program is not used by Loan or Consignment Warehouses for the purpose of stock transfers. |
| <i>Purpose</i>  | This panel allows you to:<br>Transfer stock between two warehouses using different methods.   |

---

## Explanation

When transferring stock across warehouses the relevant business unit (logical warehouse) stock levels will be updated by nominating from and to logical warehouses.

There are three different methods of processing Inter-warehouse stock transfers by using different parameters within the same Inter-warehouse Stock Transfer program. The different types are: **Stock Transfer: Picking Slip** (menu option 1), **Stock Transfer: Invoicing** (menu option 2) and **Stock Transfer: Already Delivered** (menu option 3).

**IBT Requisitions** from the Point of Sale module are also handled by this program.

Access to the various processes is gained by selecting the sending warehouse and the receiving warehouse, as well as the Carrier code. You can select to have documents and picking slips printed immediately or in the next batch run. The reference and text fields can be completed for additional information or instructions.

Items are transferred by entering the ISBN and Transfer Quantity. The stock details of each item can be accessed for reference.

---

## Transfer with Picking Slip

- Sending warehouse enters Stock Transfer details
- Produce a Picking Slip and follow Picking Slip procedures
- Confirm stock picked
- Update stock on the system
- Dispatch the stock with documentation
- Requesting warehouse receives stock

For stock transfer via Picking Slip, picking slips are produced. Picking slips are then used to transfer required stock from warehouse to warehouse. It also allows for transfers to be corrected if variances exist between the file and actual stock values. Stock is updated after corrections have been made and the production of final documents has taken place.

Warehouse stock that has a status of **H** for held can be transferred. An example of when this would be required is if the returns location has been used to hold returned stock that

has been damaged or second rate and this stock needs to be transferred to the damaged warehouse.

---

## Already Sent Transfer

- Already Sent
- Stock Update
- Capture Serial Number at time of transfer entry.

This option is used where the stock has already been physically moved to the other warehouse but the stock quantities have not been updated on the computer. Using this Already Delivered option, the stock is updated immediately, however, there is no validation on warehouse and stock availability.

As the movement has already been made the option for picking slips is unnecessary however you still have the ability to print the invoices immediately or in the next batch run.

Whilst providing an 'invoice' log of the transfer, the system picks stock according to current allocation rules which may not reflect the physical location from which it was picked.

Entry requirements are similar to both the Transfer with Picking Slip and Transfer with Invoice.

---

## Direct Transfer

- Stock transfer from/to warehouse
- Update stock
- Capture Serial Number at time of transfer entry.

This option is used to transfer stock between warehouses, using invoices instead of picking slips (the immediate picking slip option has been removed) which results in stock being updated at time of entry. The invoice can be printed immediately or in the next batch run.

The header screen selections are similar to those for transfers using Picking Slips except for the Immediate Picking Slip print flag.

---

## Examples

This section illustrates examples concerning:

[Example 1: To Transfer Stock between Warehouses](#)

[Example 2: IBT Requisitions](#)

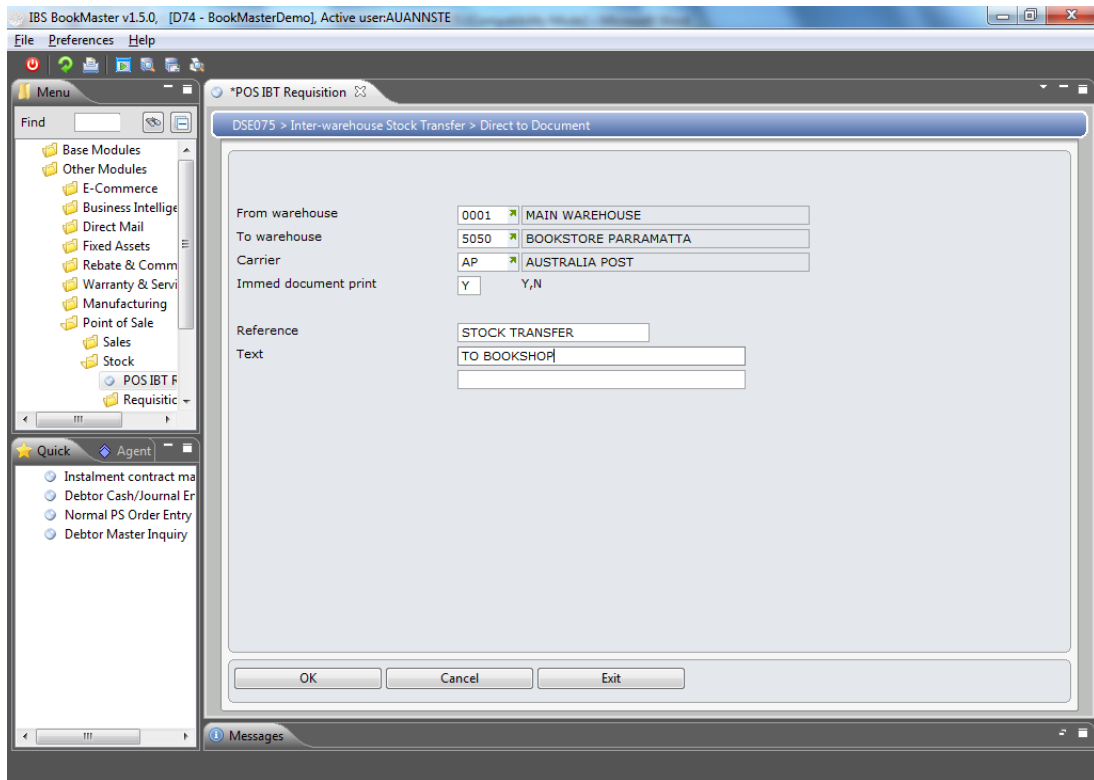
[Example 3: Display Stock](#)

---

### Example 1: To Transfer Stock between Warehouses

This example describes how to transfer stock between warehouses.

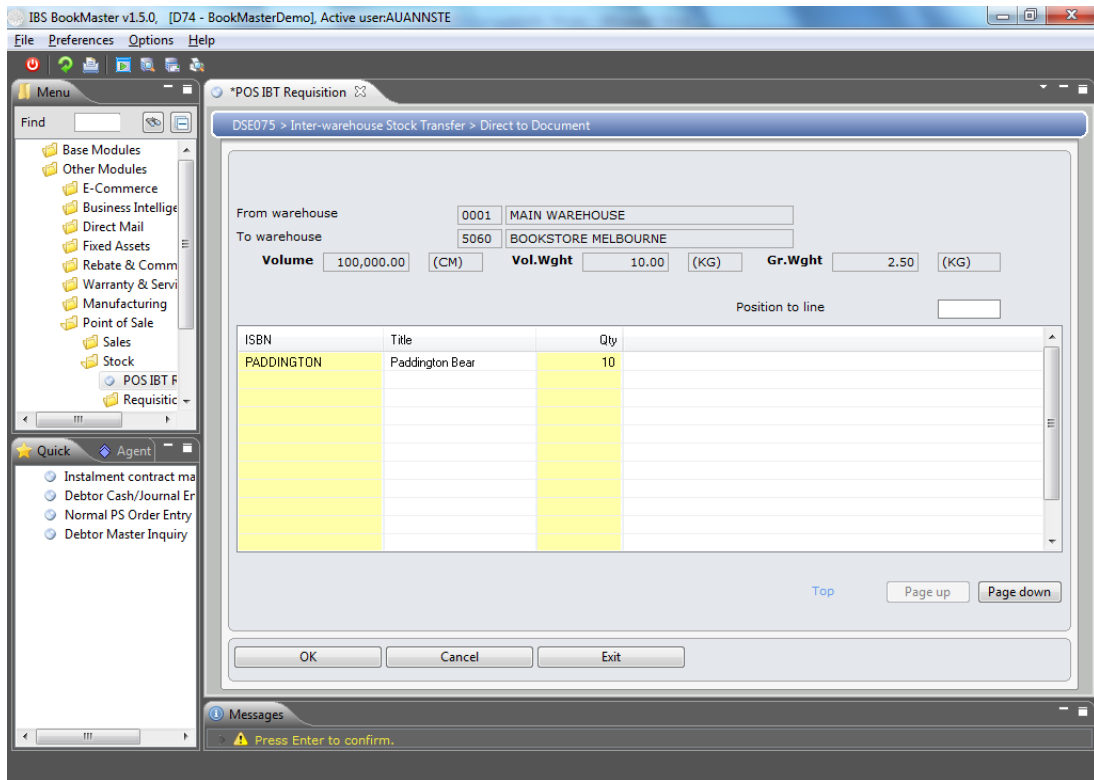
1. Select menu option **Stock Transfers** from menu **Warehouse Management**. Select menu option **Stock Transfer: Picking Slip**. Following panel is displayed.



### Relevant Fields

- From warehouse** Name of the warehouse from which stock is being transferred.
- To warehouse** Name of the warehouse code to which the stock is being transferred.
- Carrier** Name of the valid carrier responsible for transporting the stock in this transfer. This is mandatory. Carriers can be advised of the transfer details which enables accurate charge calculations.
- Immed document print** When processing a stock transfer, flag value **Yes** instructs the system to print invoices immediately. Flag value **No** will print invoices in the next batch run.
- Immed picking slip** When processing a stock transfer, flag value **Yes** instructs the system to print picking slips immediately. Flag value **No** will print picking slips in the next batch run.
- Reference** An optional entry field used to record a reference for this stock transfer.
- Text** An optional entry field used to record additional text relevant to the stock transfer.

- Key in all the fields and click **OK** to confirm the selection. Following panel is displayed.



### Relevant Fields

**ISBN**

This is an item to be transferred from one warehouse to another warehouse.

**Qty**

Total quantity of each item which is to be transferred. This can not be greater than available stock.

**Volume**

Total volume including all items to be transferred.

**Vol. Wght**

Total volume weight of all items selected for transfer.

**Gr. Wght**

This is gross weight of items selected for transfer.

### Options

**Display stock**

Access item stock inquiry to determine stock levels prior to determining quantity to transfer.

3. Enter the item and quantity of each item to be transferred. Click **OK** to confirm. Items and their corresponding quantities are transferred to specified warehouse. Held stock i.e. with status **H** can also be transferred.

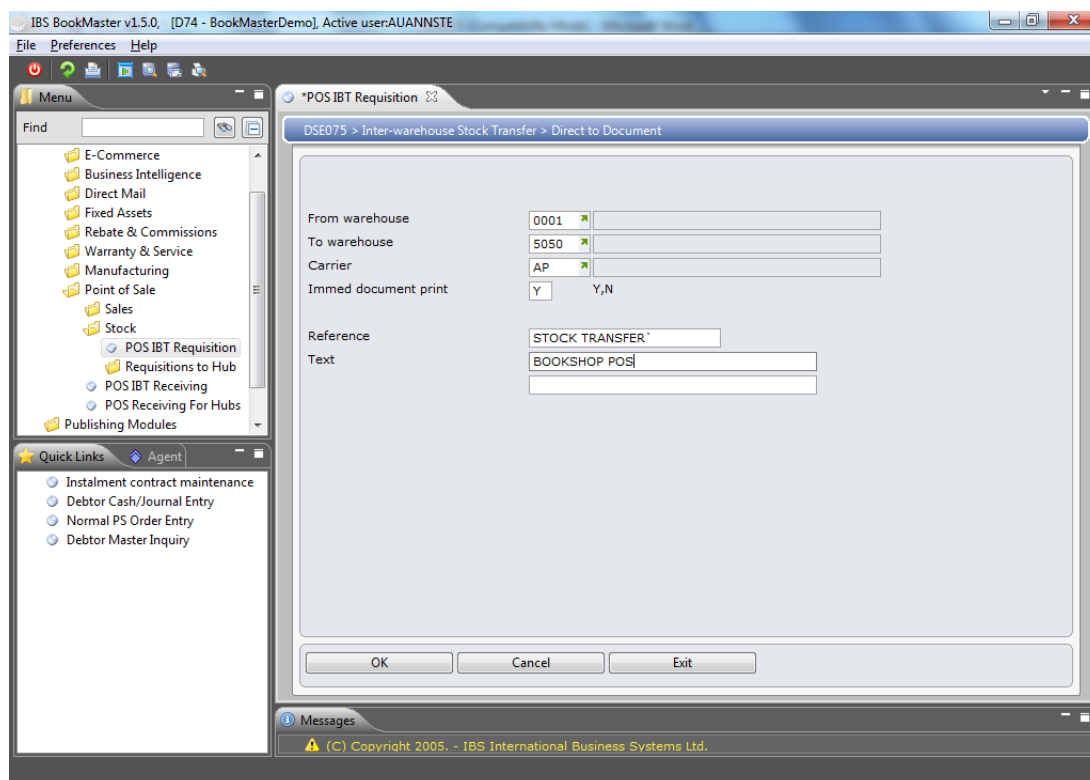
The Volume, Volume Weight and Gross Weight of an ISBN is computed and displayed on the screen as the items are entered so that the volume and weight of the units being transferred between warehouses is known when the transactions are being created. The figures are computed based on the number of units being transferred, unit of measures and conversion factors defined in **TMSWH/CNV-DIMN**.

## Example 2: IBT Requisitions

This example describes how to transfer stock between warehouses.

1. Select menu option POS IBT Requisitions from menu Point of Sale.

**DSE075 Inter-warehouse in transit Stock** panel is displayed.



### Relevant Fields

|                        |   |
|------------------------|---|
| <b>From warehouse</b>  | The warehouse the goods are being requested from.   |
| <b>To warehouse</b>    | The warehouse the goods are being transferred to.   |
| <b>Carrier</b>         | The carrier carrying the goods from one warehouse to another.   |
| <b>Immed doc print</b> | When processing a Stock Transfer, Yes instructs the system to print invoices immediately, No prints invoices in the next batch run. |
| <b>Reference</b>       | A reference given to the transfer to assist in tracking the transfer.   |
| <b>Text</b>            | Any text relating to the transfer of goods.   |

**Note:** When transferring goods from one warehouse to another both warehouses must have the same company code.

2. Key in required fields and click **OK**.

**DSE075 Inter warehouse Stock Transfer Direct to Document** panel is displayed.

3. Click **OK** and the goods are then transferred.

---

### Example 3: Display Stock

This example describes how to transfer stock between warehouses.

1. Repeat Steps 1 and 2 as in [Example 1: To Transfer Stock between Warehouses](#)
2. Select a record and click **Display Stock**.

**DSI020 Item Stock Inquiry** panel is displayed.

Please refer DSI020 for the further details.