

---

# DSE053 Analyse Store Order Maintenance

---

## Overview

After the requisitions have been completed, the hub produces a store order report to be reviewed and maintained. The report provides suggested stock transfers between hubs and satellites based on the requirements and current stock availability.

When the ordered stock arrives, each hub receives the items and allocates the stock to the satellites and to the hub itself by running the store order report to either produce a suggested order allocation or to automatically generate a stock transfer.

The update option is used to automatically generate the stock transfers.

---

## Examples

This section illustrates examples concerning:

[Example 1: Addition of Suggested Order for an Item](#)

[Example 2: Maintain Store Orders](#)

[Example 3: Delete a Suggested Order](#)

[Example 4: Print a Report](#)

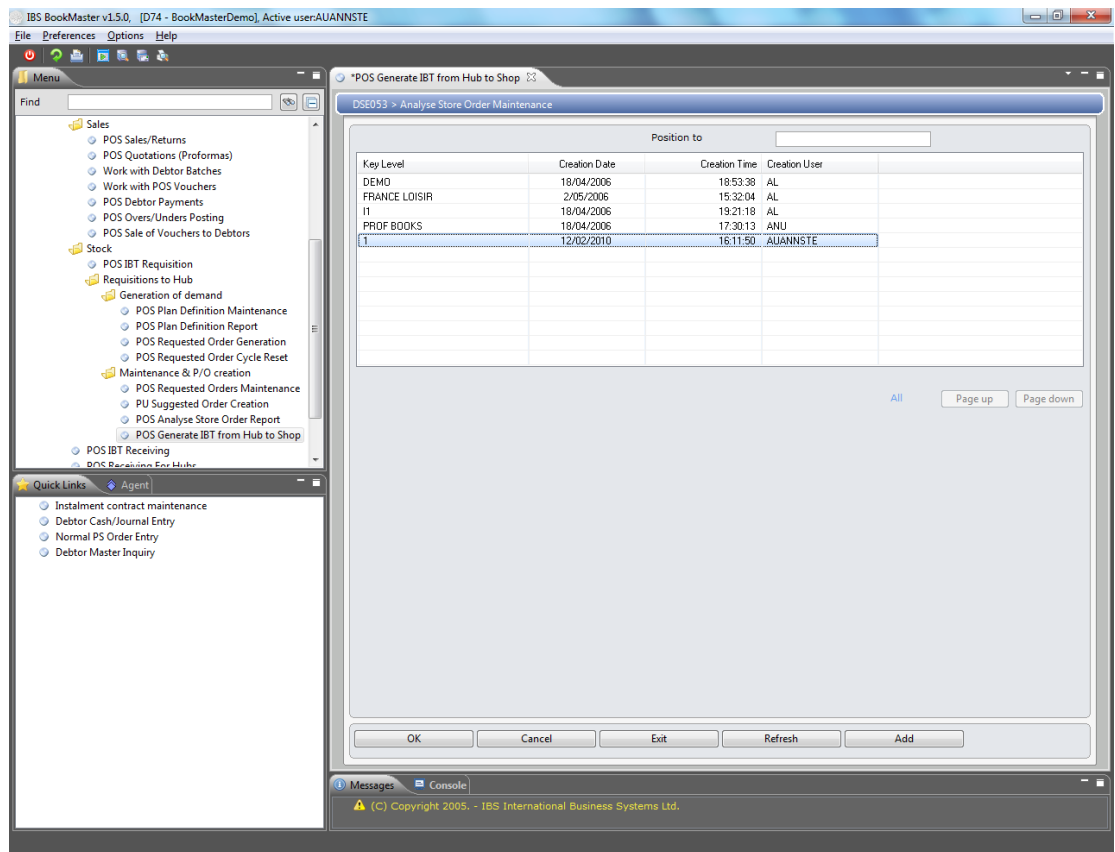
[Example 5: Update the Transfer](#)

---

### Example 1: Addition of Suggested Order for an Item

This example describes how to add suggested order for an item.

1. Select menu option Generate IBT from HUB to Shop from POS: Requisitions menu.
2. DSE053 Analyse Store Order Maintenance main panel is displayed.



## Options

### Print

Access DSO147 Analyse Store Order Maintenance to print the report. The report displays the selected levels for each Title, the suggested stock transfer quantity, the requested quantity, outstanding order quantity, forward order quantity, reserved quantity, on-hand quantity, transfer quantity, on board quantity and on order quantity.

### Update

Access DSO149 Retail Stock Transfer to generate the stock transfer.

### Change

Access DSE051 Analyse Store Order Requisition to maintain store orders.

### Delete

Delete is used to delete the suggested order.

## Functions

### Add

Access DSO147 Analyse Store Order Maintenance to add a suggested order for a item or range of items to do a stock transfer

3. Click **Add**.
4. DSO147 Analyse Store Order Maintenance panel is displayed.
5. Please refer DSO147 for the further details.

## Example 2: Maintain Store Orders

This example describes how to maintain store orders.

1. Repeat step 1 as in [Example 1: Addition of Suggested Order for an Item](#)
2. Select a record and click **Change**.

**DSE051 Analyse Store Order Requisition** panel is displayed.

Please refer DSE051 for the further details.

---

### Example 3: Delete a Suggested Order

This example describes how to delete a suggested order.

1. Repeat step 1 as in [Example 1: Addition of Suggested Order for an Item](#)
2. Select a record and click **Delete**.

Selected suggested order is deleted.

---

### Example 4: Print a Report

This example describes how to print a report.

1. Repeat step 1 as in [Example 1: Addition of Suggested Order for an Item](#)
2. Select a record and click **Print**.
3. DSO147 Analyse Store Order Maintenance panel is displayed.
4. Please refer DSO147 for the further details.

---

### Example 5: Update the Transfer

This example describes how to update the transfer.

1. Repeat step 1 as in [Example 1: Addition of Suggested Order for an Item](#)
2. Select a record and click **Update**.
3. DSO149 Retail Stock Transfer panel is displayed.
4. Please refer DSO149 for the further details.