

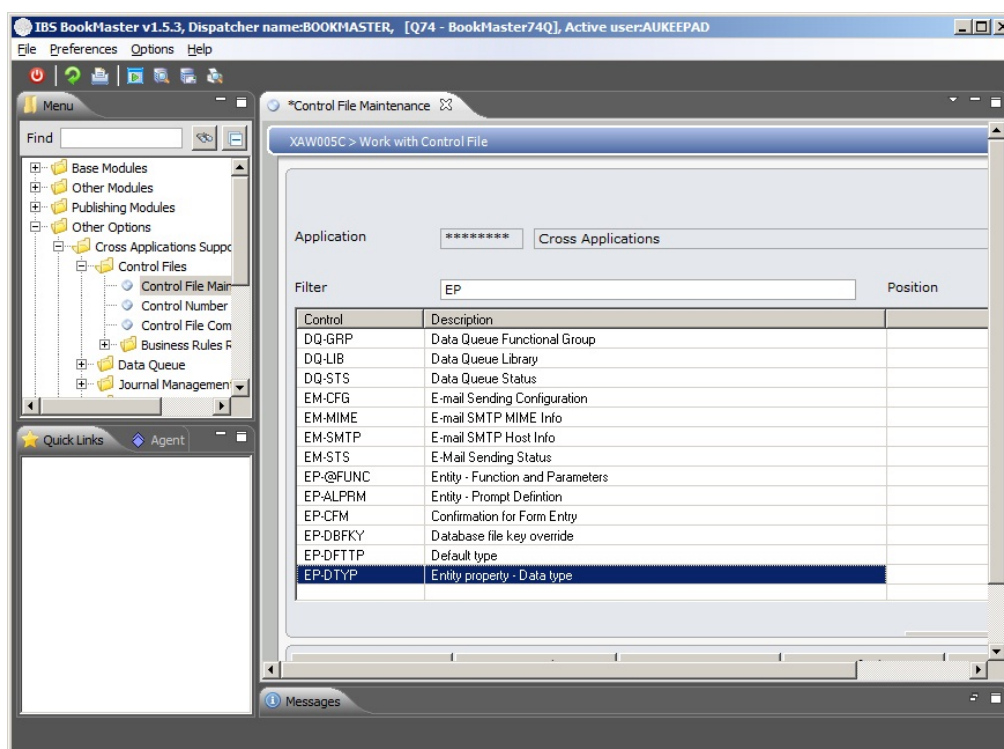
---

# Basic Control File & Control Number Setup

---

## Explanation

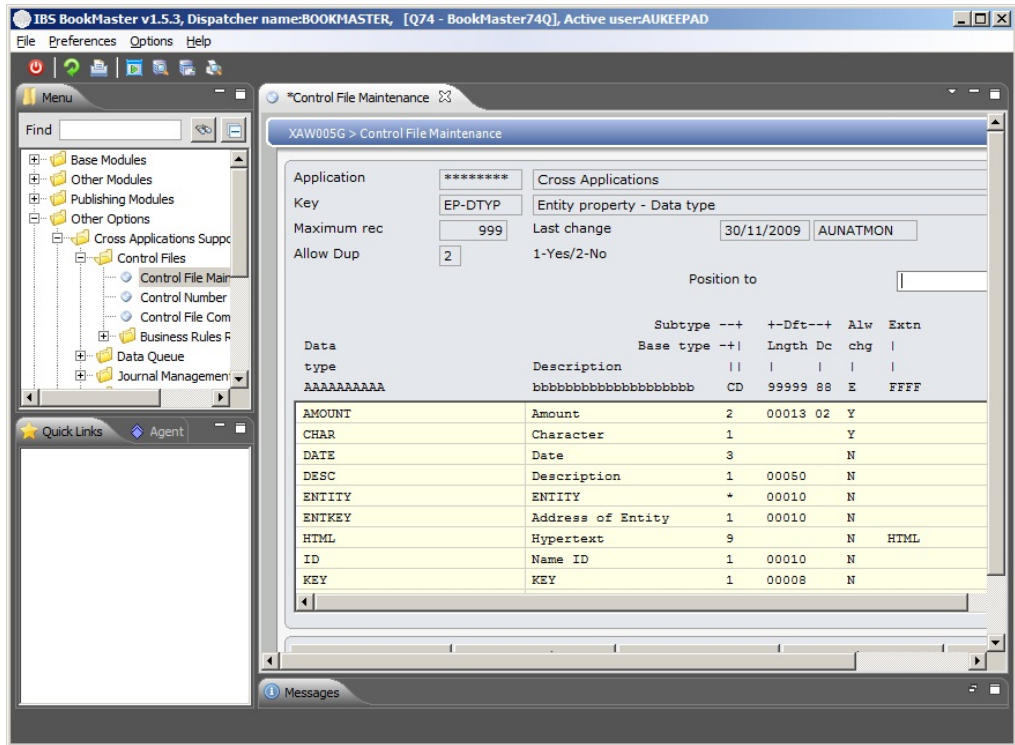
\*\*\*\*\*/EP-DTYP



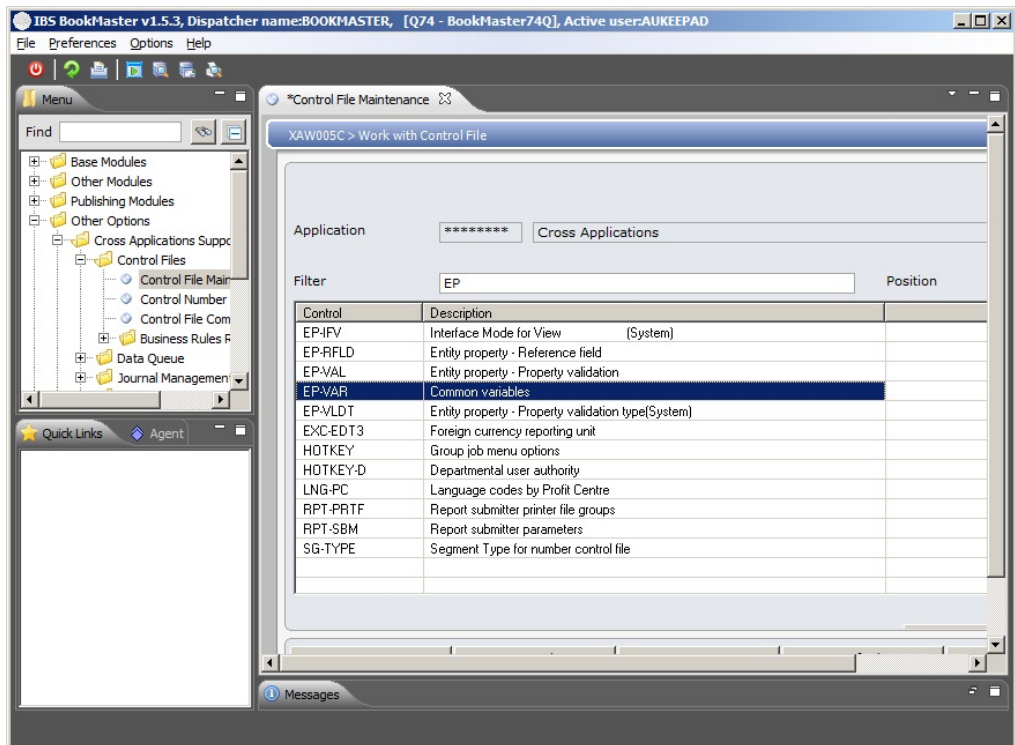
The control File \*\*\*\*\*/EP-DTYP sets the available data types that can be used on UDF Properties. You may modify this table and create their own entries.

You may wish to review entries to change default lengths, create links with PC Applications, or perhaps setup up more entries with default attributes that they think will be utilised commonly on UDF properties.

**Note** : Don't go overboard creating a lot of data types with similar attributes, but different lengths. Probably better to 'allow change' and override lengths for each specific UDF property.



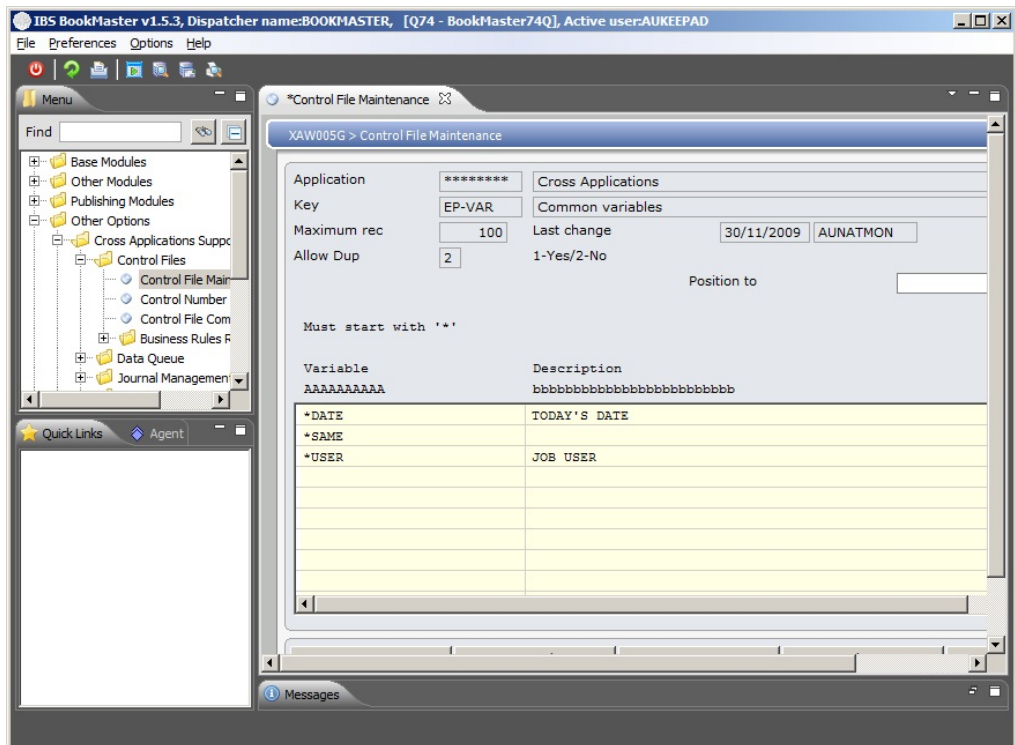
\*\*\*\*\*/EP-VAR



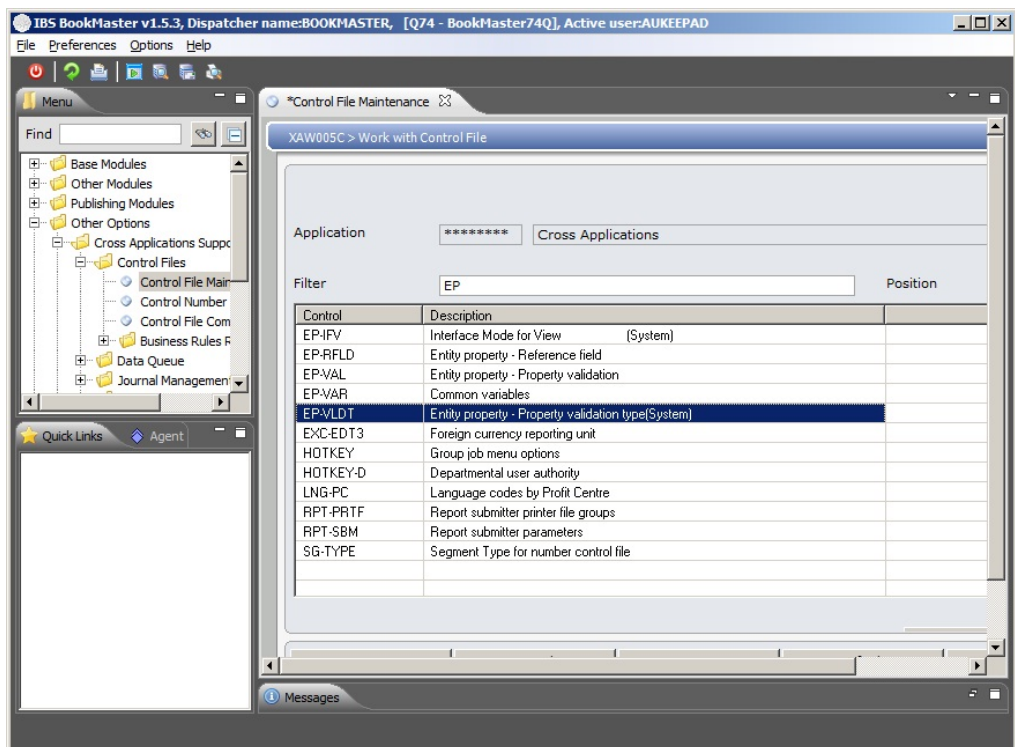
This Control File \*\*\*\*\*/EP-VAR contains the system defined variables that may be used within UDF forms and views.

\*SAME = Pass current property value as variable to function/form.

This is the only variable that is currently used.

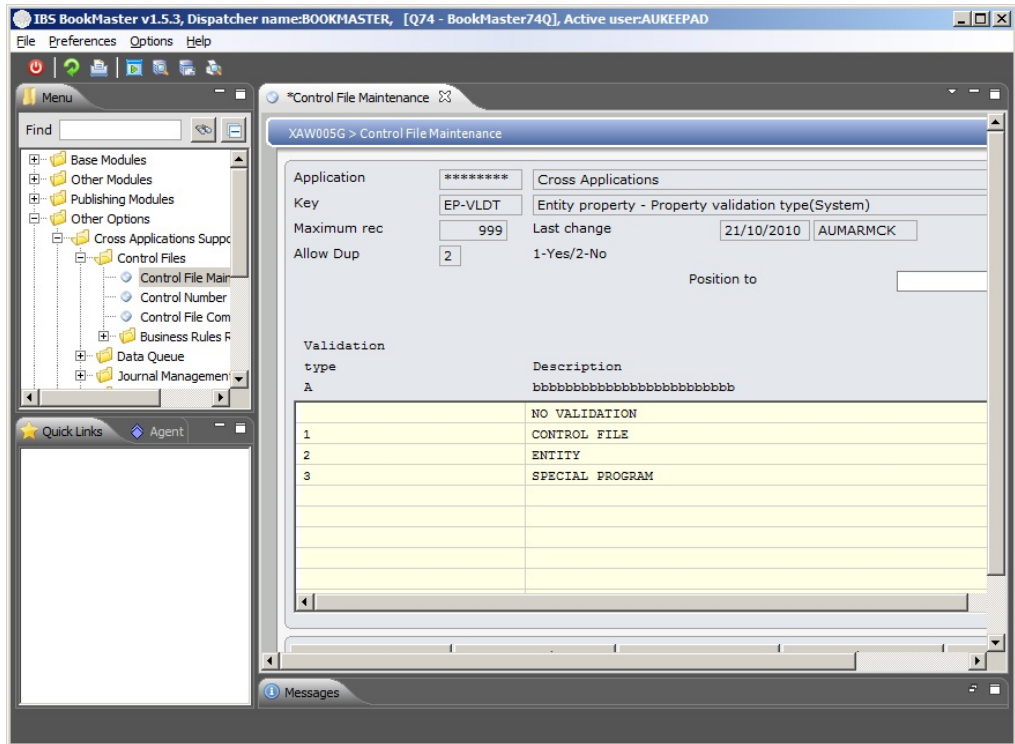


\*\*\*\*\*/EP-VLDT

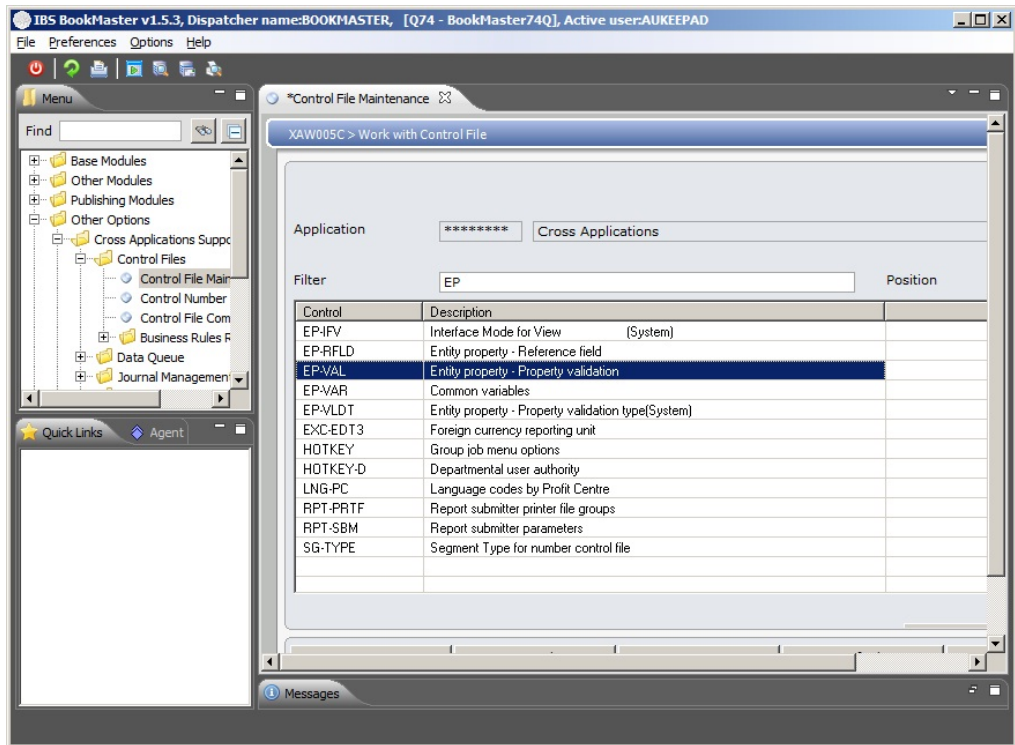


This Control File \*\*\*\*\*/EP-VLDT are system define validation types to be used in creating the entity.

For validation type 3 (Special Program), the validation code must be setup up in Control file \*\*\*\*\*/EP-VAL to determine the link to the special program.



\*\*\*\*\*/EP-VAL



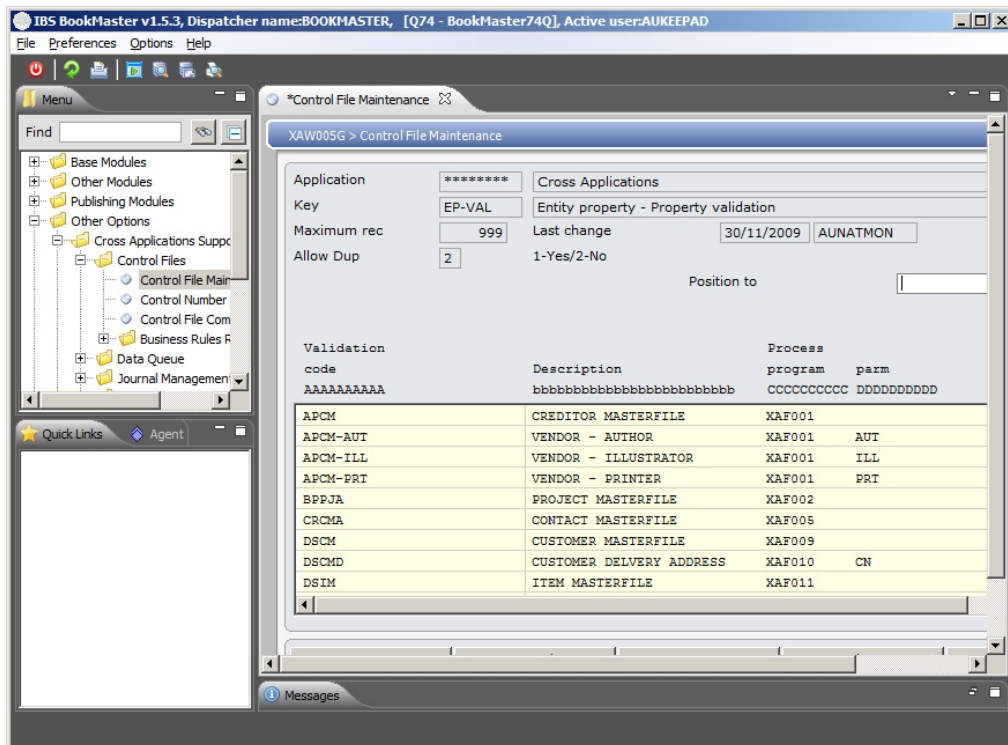
This control File \*\*\*\*\*/EP-VAL defines the special validation programs that may be used on properties.

These programs typically perform two functions.

1. Provide Search list functionality when end-user is positioned on a property.
2. Validate data entered in this property (usually verifying that the record key exists in a master file).

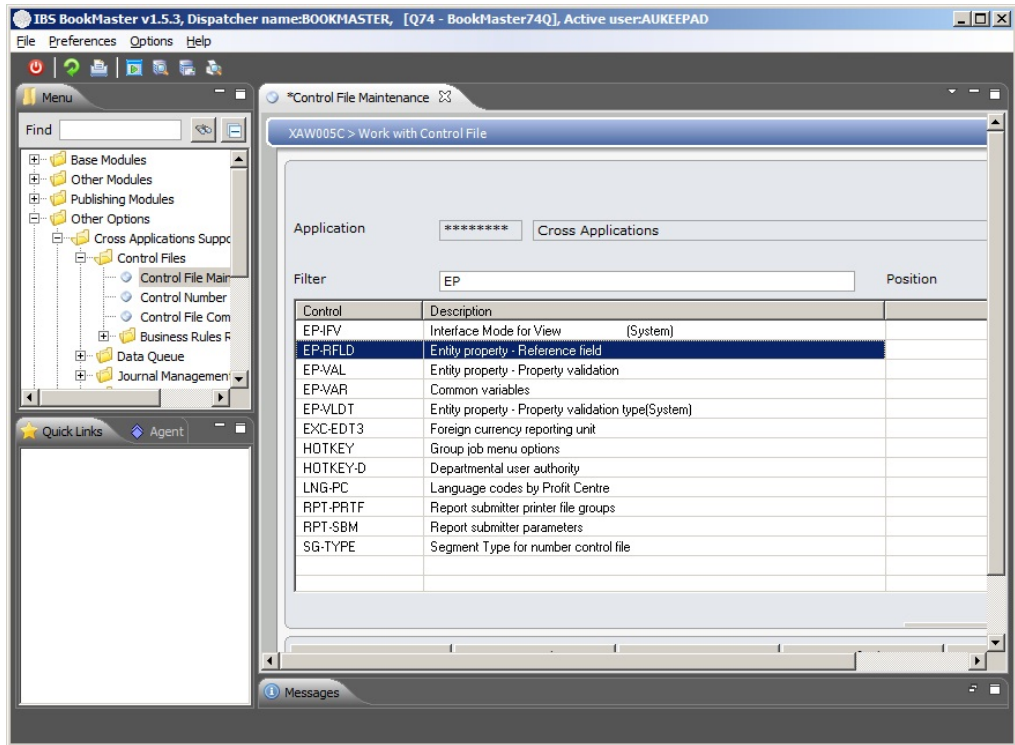
**Note** Pre-supplied System defined validation programs are supplied, but you can add your own.

You may add new entries if you write you own validation programs. These programs will need to conform to entry parameters used in the Bookmaster supplied programs (Mode, Parm, Prop, code, Desc, Sts).

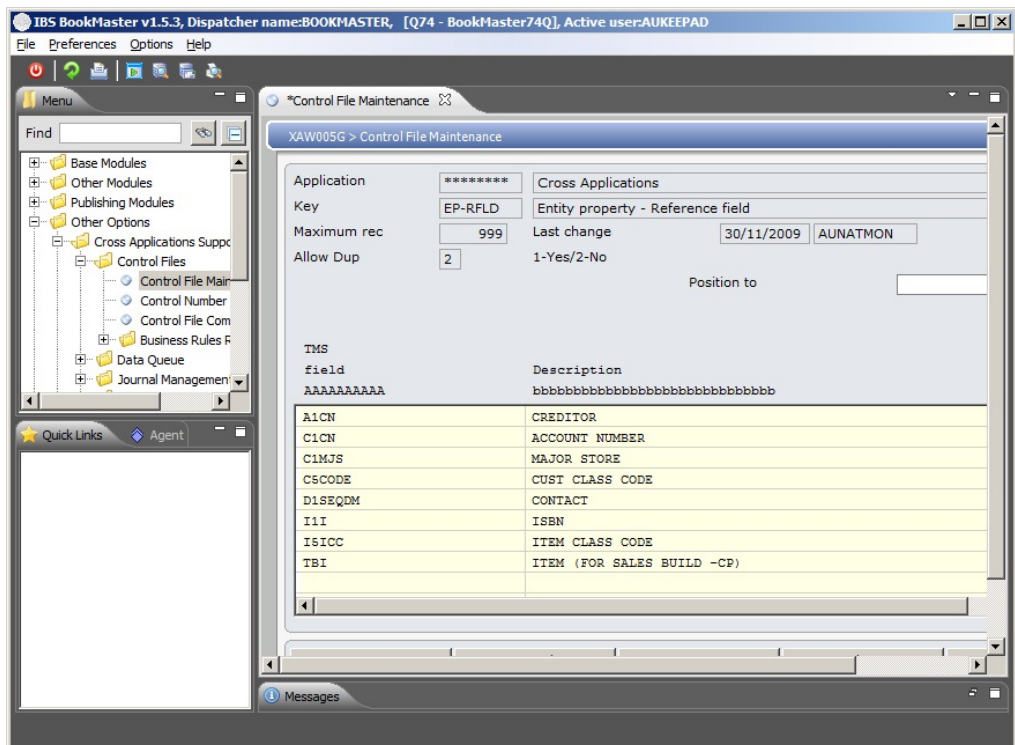


\*\*\*\*\*/EP- CFM

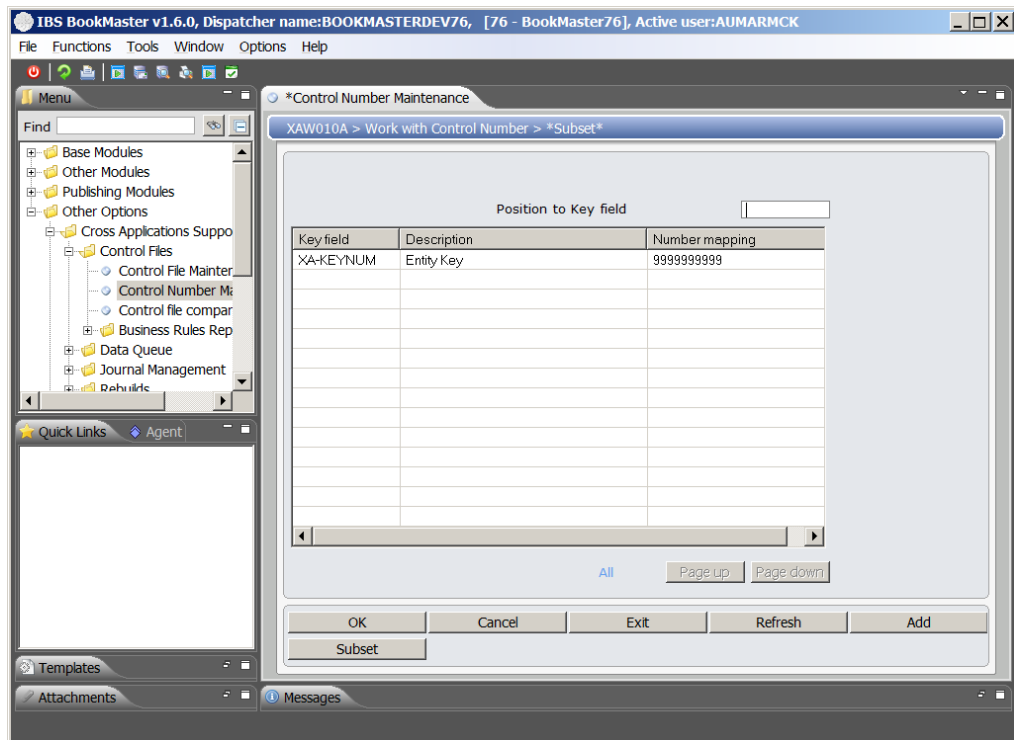




This Control File \*\*\*\*\*/EP-RFLD Is used to link UDF properties with the BI Module. Refer to the Business Intelligence Module for more information.



Control Number \*\*\*\*\*/XA-KEYNUM



This Control Number file is used to assign unique keys for storage of user defined data on XAEV\* files. Each time data is created for a new UDF entity key, the next available number is obtained from this control file.

**Without this number control, no-one will be able to save UDF data!**

Storage of UDF data works on the 'Foreign Keys's concept.

The following steps assume a first time set up of UDF where no data already stored in XAEV\* UDF files. It is important that the next control number does not coincide with existing data in these XAEV\* files!

1. Select option for Control Number Maintenance form Cross Application Support main menu.
2. **Key Field** must be **XA-KEYNUM** and **Description** should be **Entity Key**.
3. The following fields should be set as given below.
  - **Number length** is **10**
  - **Number mapping** is **9999999999**
  - **Key definitions 1-3** should be left blank.
4. Press **<Enter>** to create the control.
5. Now use Add function to add a key value,
  - **Key ID** must be **\*\*\*\*\***
  - **Current value** should be set to **0000000001**.
  - **Lower limit** should be set to **0000000001**
  - **Upper limit** should be set to **9999999999**
- 6.
7. Press Enter to create the Key ID.

8. Now use F6 function to create key rules for this id.
  - **Sequence** should be **10**.
  - **Key ID** should be **\*\*\*\*\***
9. Press enter to confirm creation of this rule.