
APM000 AP Data Queue Processor Manager

Overview

This program displays current job status, process number and library the status applies. This program maintains data queue status.

Examples

This section illustrates examples concerning:

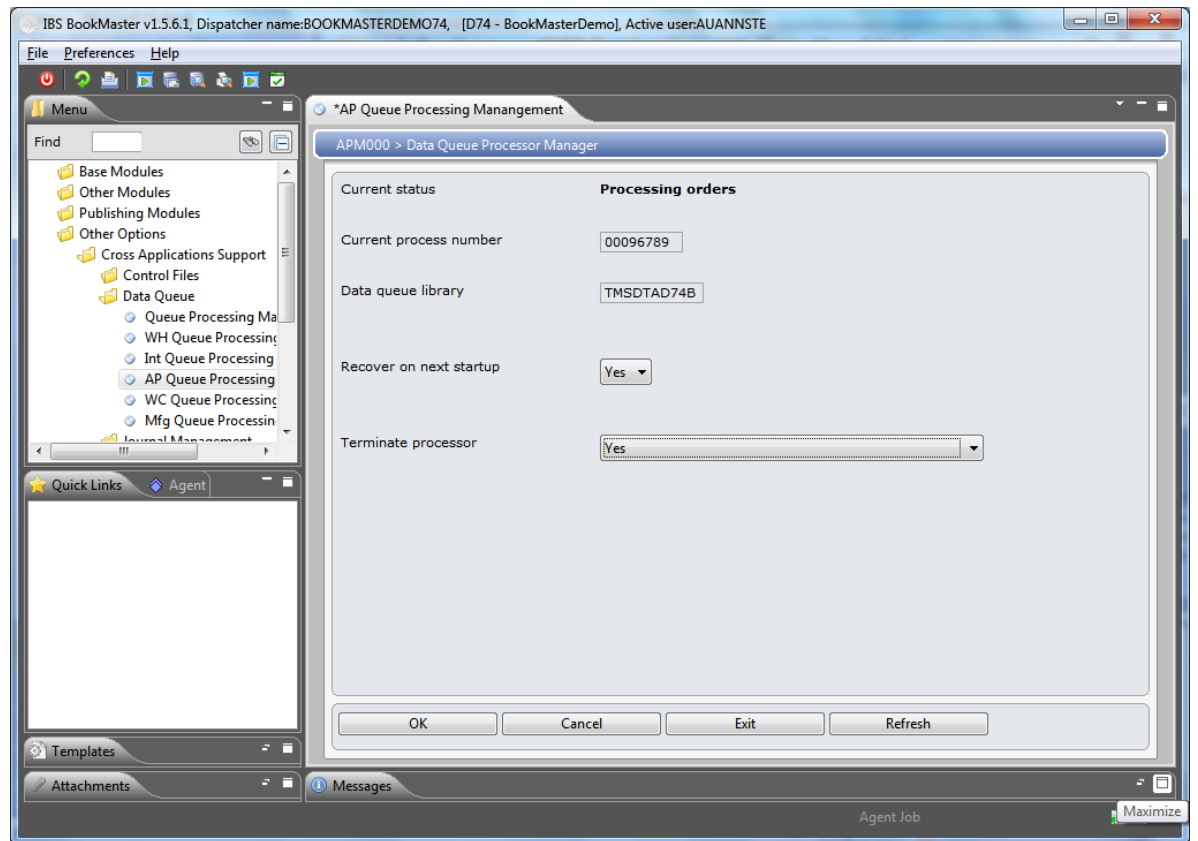
[Example 1: Activation/deactivation of data queue processor.](#)

Example 1: Activation/deactivation of data queue processor

This example describes how to activate or deactivate data queue.

1. Select option **AP Queue Processing Management** from Other Options> Cross Application Support> Data Queue menu.

APM000 Data Queue Processor Manager panel is displayed.



2. Set Activate processor as Yes and click **OK**. Data Queue Processor is activated.