

---

# SMW015 Subscription Order Selection

---

## Overview

The subscription order selection program allows you to select and work with subscription list orders.

---

## Examples

This section illustrates examples concerning:

[Example 1: Subscription order selection](#)

[Example 2: Add subscription order](#)

[Example 3: Subscription list inquiry](#)

[Example 4: Change subscription order](#)

[Example 5: Display details of subscription order](#)

[Example 6: Subscription transaction inquiry](#)

[Example 7: Differed revenue inquiry](#)

---

### Example 1: Subscription order selection

This example describes subscription order selection.

1. Select menu option **Work with Sub Lists** from Publishing Modules>Subscription Management>Maintenance menu.

**SMW005 Subscription List Selection** main panel is displayed.

2. Click **OK** to display all the Subscription Lists in the system.
3. Select a list item and click option **Orders**.

**SMW015A Subscription Order Selection** panel is displayed

## Relevant fields

### Customer no

Enter the valid customer number for the customer to be added or registered to the Subscription List. This is the ship to account number rather than the bill to account number. If the account entered is Closed, the system does not allow the order to be created.

When in the Points Maintenance program this is the customer you are allocating points to.

### Delivery no

A customer can have multiple Delivery Addresses. Each Delivery Address is given a code or number. If this field is left blank the system takes the default.

### Billing no

This is the billing number for the selected customer. The billing number defaults to the billing number set up on the Customer masterfile for the selected customer. If the multiple billing numbers exist for the selected customer prompt and select the correct billing number.

### Subscription order status

For a new subscription, the status is A. When the current term of the subscription expires, the system changes the subscription status to under renewal (B=Renewal). A manual instruction is given to change the status to Active when payment has been received

### Customer reference

The Customer Reference given when the customer was added to a Subscription List via Subscription Order Maintenance.

### Subscription

This is the key for Subscriptions processing. In the Deferred

## reference

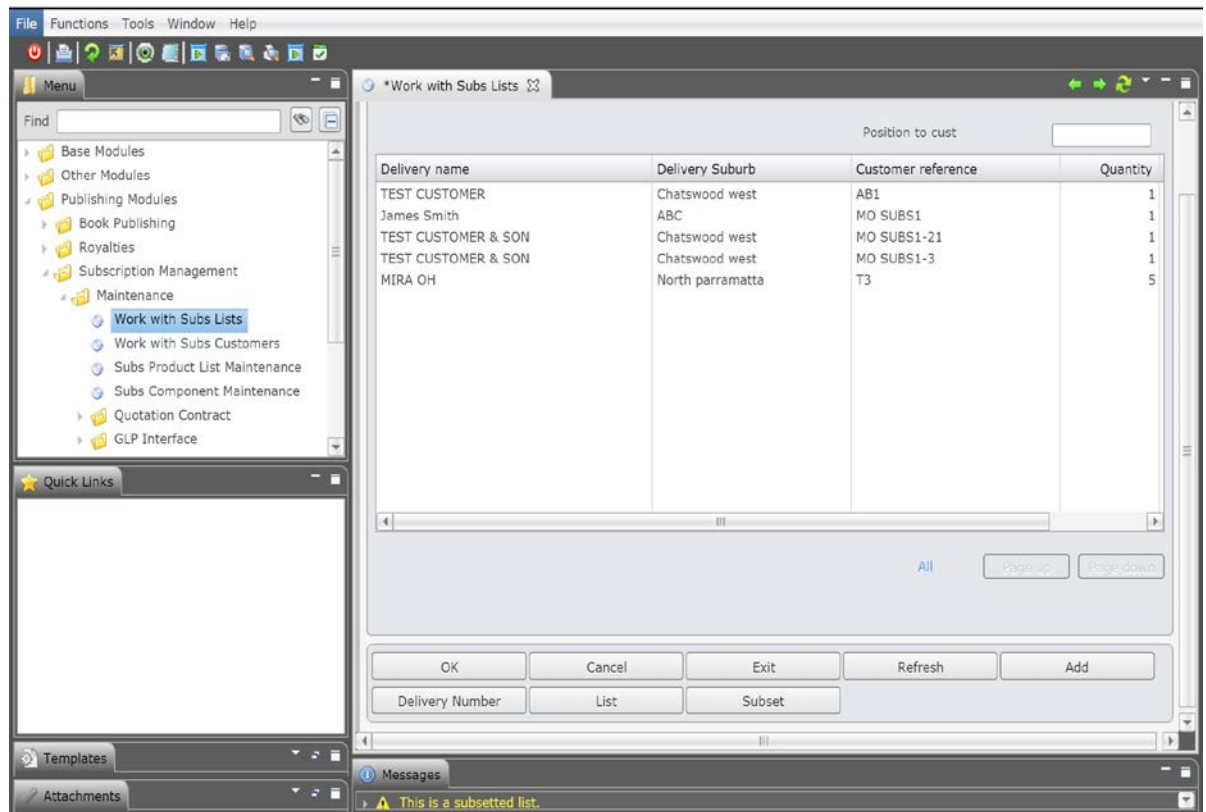
Revenue Inquiry the reference number is system generated. This is established in the Number File SM-SBRF. This reference number can be viewed after the Subscription Run Release option has been taken.

## Gratis code

If this ISBN is being supplied free of charge, indicate the reason why.

4. Enter required fields and Click **OK**.

**SMW015A Subscription Order Maintenance** panel is displayed



## Function

### Add

Access Subscription Order Maintenance - Add panel to add

### Delivery Number/Customer Reference Format

DLVN/CREF function key toggle between Delivery no and Customer reference.

Displays the customer number/name, subscription source and cancellation code/text or the Delivery name/address details.

### List

Access Subscription List Maintenance panel for inquiry of list

### Subset

Access Subscription Order Selection panel.

## Option

### Change

Access Subscription Order Maintenance panel to change the Subscription order details.

### Display details

Access Subscription Order Maintenance panel for inquiry of the Subscription order.

Customer	Provides access to CRM using the CRM option in control file TMSSM/SMW015-C.
Dsp releases	Access Subscription Transaction Inquiry panel for inquiry of Subscription transaction.

5. Click **OK** to complete the order selection.

---

### Example 2: Add subscription order

This example describes how to add subscription order.

1. Repeat steps 1 to 4 as in [Example 1: Subscription order selection](#)
2. Click **Add** to add.

**SMW020A Subscription Order Maintenance** panel is displayed in add mode.  
Please refer **SMW020A Subscription Order Maintenance** for further details.

---

### Example 3: Subscription list inquiry

This example describes how to display subscription list.

1. Repeat steps 1 to 4 as in [Example 1: Subscription order selection](#)
2. Click **List**.

**SMW010A Subscription List Maintenance** panel is displayed in inquiry mode.  
Please refer **SMW010A Subscription List Maintenance** for further details.

---

### Example 4: Change subscription order

This example describes how to change subscription order

1. Repeat steps 1 to 4 as in [Example 1: Subscription order selection](#)
2. Select order and click option **Change**.

**SMW020A Subscription Order Maintenance** panel is displayed in change mode.  
Please refer **SMW020A Subscription Order Maintenance** for further details.

---

### Example 5: Display details of subscription order

This example describes how to display details of subscription order

1. Repeat steps 1 to 4 as in [Example 1: Subscription order selection](#)
2. Select order and click option **Dsp details**.

**SMW020A Subscription Order Maintenance** panel is displayed in inquiry mode.  
Please refer **SMW020A Subscription Order Maintenance** for further details.

---

### Example 6: Subscription transaction inquiry

This example describes how to display details of subscription transaction.

1. Repeat steps 1 to 4 as in [Example 1: Subscription order selection](#)

2. Select order and click option **Dsp releases**.

**SMW025 Subscription Transaction Inquiry** panel is displayed.

---

### Example 7: Deferred revenue inquiry

This example describes how to defer revenue inquiry.

1. Repeat steps 1 to 4 as in [Example 1: Subscription order selection](#)
2. Select order and click option **Def revenue**.

DSM423A Work with Deferred Revenue panel is displayed.

---

## Cross Reference

- DSE005A - OPB - Order entry.
- SMW005A - Subscription list selection.
- SMW050B - Subscription maintenance by customer - By Sub list.