

---

# SMW009 Subscription/Item Link Maintenance

---

## Overview

This Entry/Maintenance program is used to maintain the subs list and ISBN link file. A subscription list range can be selected for display.

This program can also be called from Subscription List Maintenance.

---

## Examples

This section illustrates examples concerning:

[Example 1: Add subscription/item link](#)

[Example 2: Change subscription/ item link](#)

[Example 3: Copy subscription/ item link](#)

[Example 4: Display subscription/ item link](#)

[Example 5: Delete subscription/ item link](#)

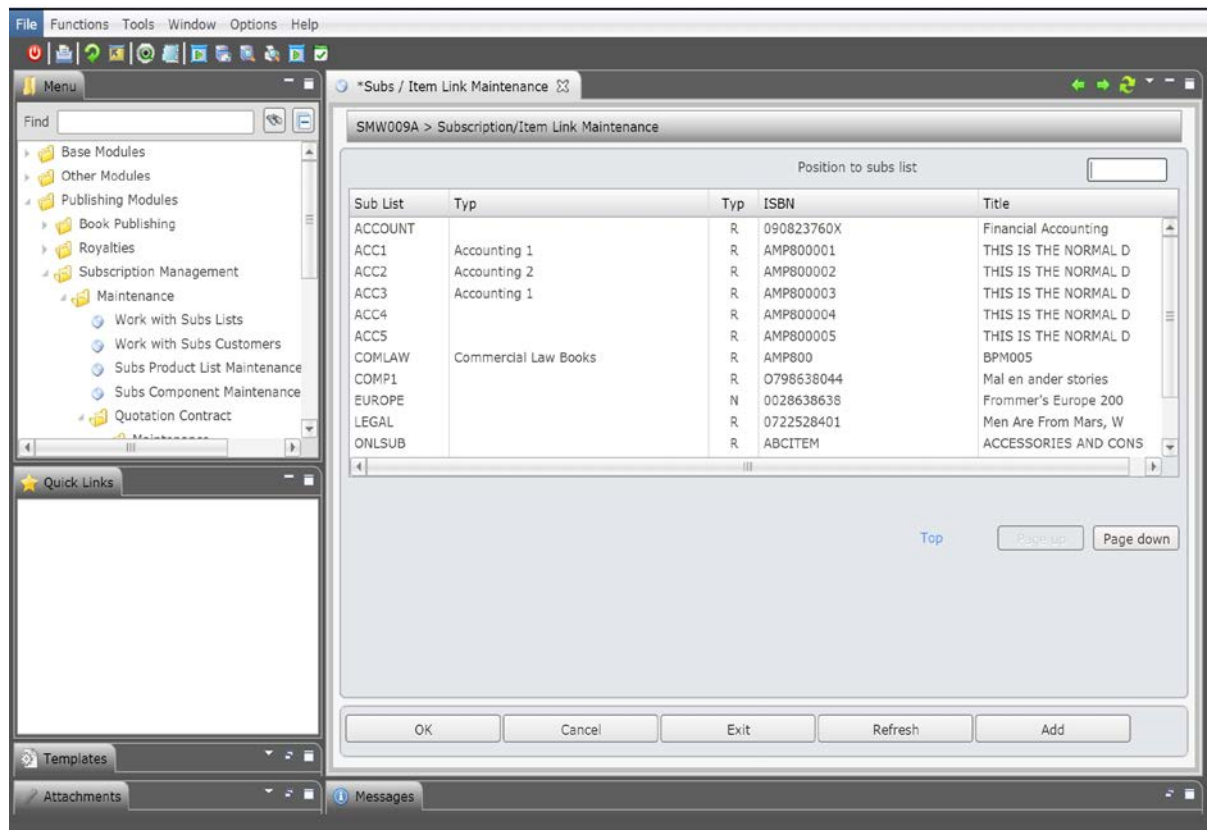
---

### Example 1: Add subscription/item link

This example describes how to add subscription/item link

1. Select menu item **Subs/Item Link Maintenance** from Publishing Modules>Subscription Management>Maintenance>Quotation Contract>Maintenance menu.

**SMW009A Subscription/item link maintenance** main panel is displayed.



## Function

### Add

Access Subscription/item link panel to add subscription/item link.

## Option

### Change

Access Subscription/item link panel to change subscription / item link.

### Copy

Access Subscription/item link panel to copy subscription/ item link.

### Delete

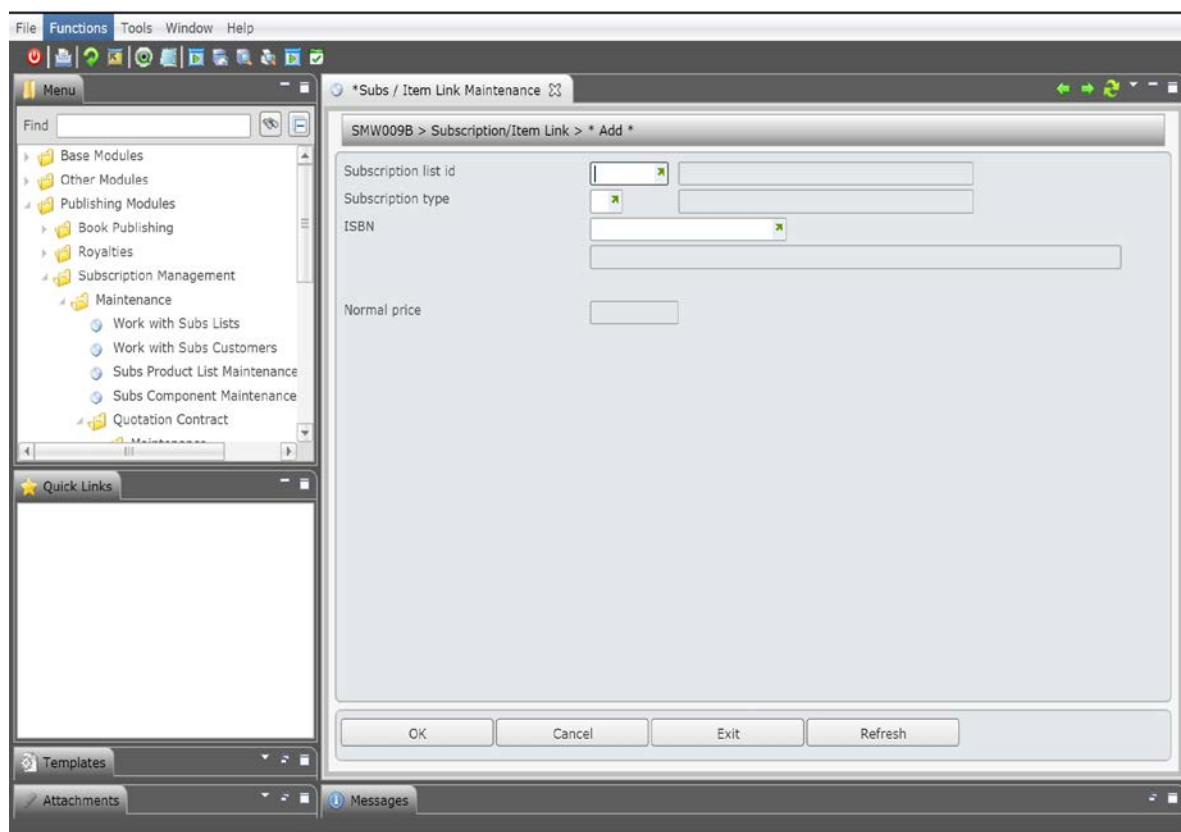
Access Subscription/item link panel to delete subscription / item link.

### Display

Access Subscription/item link panel to display subscription/ item link.

2. Click **Add** to add subscription / item link.

**SMW009B Subscription/item link** panel is displayed in add mode.



## Relevant field

### Subscription list ID

A name or code to be used to identify this Subscription List (Sub List) is required. This name usually relates to the title being subscribed to and if the title comes in a number of formats like CD, tape, hardcover, softcover, etc. a Subscription List for each one of these titles needs to be created. This is not the ISBN set up on the Title Masterfile but rather a similar code to easily identify the products being supplied. The actual ISBN can be used as a Subscription List Identification if it is the company preference. To denote the format options, the same core number can be used with a suffix of say C for CD and O for On-line, etc. This Sub List ID code can be a maximum of 8 alphanumeric characters.

*For example: SIMC for Simms Court Practice*

*In Release Run Management, if a specific Subscription List is required the List Id can be entered. Leave the field blank to select all Subscription Lists.*

When releasing subscription orders, enter the Subscription List to be used for the release. Multiple Subscription Lists can be used with one Product List.

### Subscription type Item

Enter a Quotation contract subscription list type code

A Product List can have a number of ISBNs linked to it. Prior to a bulk run, ISBNs for a specific run can be added to or deleted from the Product List.

If this Product List is being prepared for a Renewal run, select

the Renewal ISBN for the publication being renewed, not the stock Item number. One Renewal ISBN is usually established per subscription ISBN. The Invoice text can be used to advise the customer of the renewal details like the period for which they are renewing.

**Normal price**

Defaults the normal price from the Price file for the ISBN selected.

3. Enter required field and click **OK** to add subscription/ item link.

---

### Example 2: Change subscription/ item link

This example describes how to change subscription/item link

1. Repeat step 1, and 2 as in [Example 1: Add subscription/item link](#)
2. Click **Change**.

**SMW009B Subscription/item link** panel is displayed in change mode.

3. Make required changes and click **OK** to confirm changes.

---

### Example 3: Copy subscription/ item link

This example describes how to copy existing subscription/item link details to new subscription/item link.

1. Repeat step 1, and 2 as in [Example 1: Add subscription/item link](#)
2. Click **Copy**

**SMW009B Subscription/item link** panel is displayed in copy mode

3. Enter new Subscription list id in which to copy details and click **OK** to confirm.

---

### Example 4: Display subscription/ item link

This example describes how to display subscription/item link

1. Repeat step 1, and 2 as in [Example 1: Add subscription/item link](#)
2. Click **Display**.

**SMW009B Subscription/item link** panel is displayed in display mode

3. Click **OK**.

---

### Example 5: Delete subscription/ item link

This example describes how to delete subscription/item link

1. Repeat step 1, and 2 as in [Example 1: Add subscription/item link](#)
2. Click **Delete**.

**SMW009B Subscription/item link** panel is displayed in delete mode

3. Click **OK** to delete.

---

## Cross Reference

- SMW007C - Quotation contract entry/maintenance.