
SMR040 Subscription Cancellation Report

Overview

This program displays customer, subscription list ID, quantity multiplier, cancellation codes and phone & fax for the selected subscription ID or all subscription IDs

Examples

This section illustrates examples concerning:

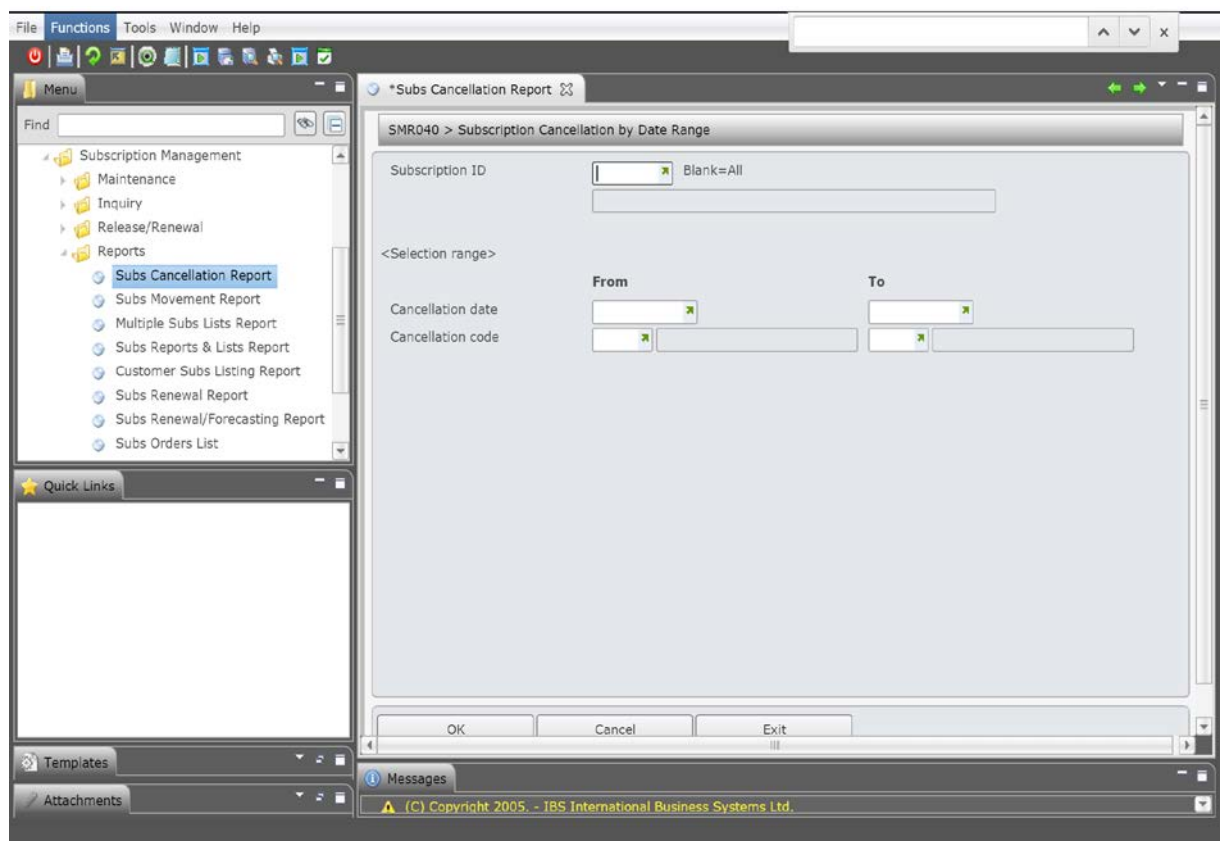
[Example 1: Subscription cancellation report](#)

Example 1: Subscription cancellation report

This example describes how to run subscription cancellation report.

1. Select menu item **Subs Cancellation Report** from the Publishing Modules>Subscription Management>Reports menu.

SMR040 Subscription Cancellation by Date Range Report panel is displayed.



2. Enter the subscription ID and the selection range for the cancellation date and the code.
3. Click **OK** to produce the report.

The report displays the following information:

- Customer
- Quantity
- Telephone
- Fax
- Reason
- Text

