
SMO151 Subscriptions Renewal Forecast Extraction

Overview

This program extracts the forecast subscription order figures for the deferred revenue process.

Explanation

TMSSM/SMO151 defaults the subscription forecast renewal file extraction path/name.

TMSSM/SMO151-S defines item suffix for the items in the classification 'IC-SUBSL' that the suffix is to be replaced by the code in this control file. On most customers sites this control file will be blank.

Examples

This section illustrates examples concerning:

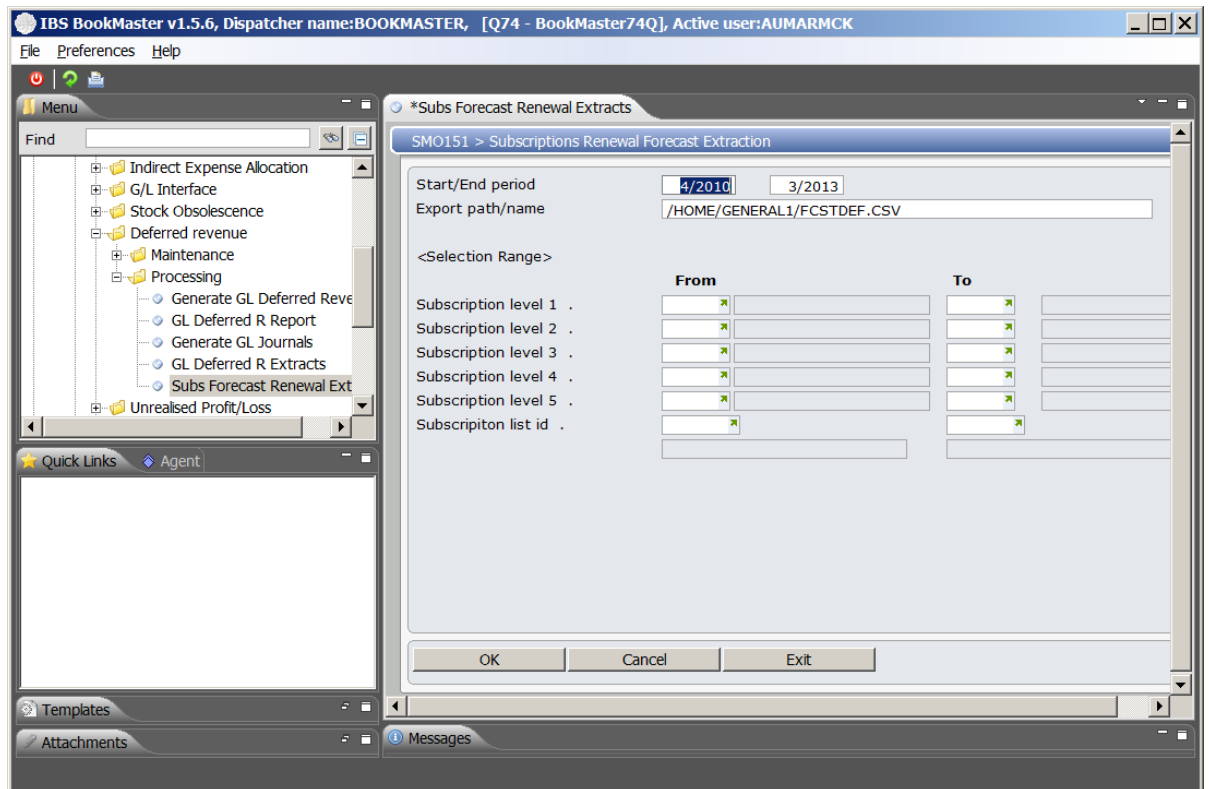
[Example 1: Subscriptions Renewal Forecast Extraction](#)

Example 1: Subscriptions Renewal Forecast Extraction

This example describes how to perform subscriptions renewal forecast extraction.

1. Select menu option **Subs Forecast Renewal Extracts** from **Base Modules>General Ledger>Other>Deferred Revenue>Processing menu**.

SMO151 Subscriptions Renewal Forecast Extraction panel is displayed.



Relevant Fields

Start/End period

Start/end period

In Subscriptions Renewal Forecast Extraction entry of the start/end period is defaulted by the system and may be overridden.

Period

In GL Budget Generation the current period is retrieved.

From period

In GL Budget Generation in the Fist, from Actuals section, the From Budget for Actuals and Budget is also selected.

Export path/name

This is the path and name of the file you are exporting the information to. This path name comes from TMSDS/DSO427 and may be overridden.

2. Select Subscription levels as required and enter period and path name and click **OK**.

Path/naming convention should be setup on respective PC. Follow the normal transfer process from IBM POWER SYSTEM to PC.