
GLW105 Report Writer Parameter Maintenance

<i>Overview</i>	This panel allows you to maintain the report writer parameter file.
<i>Purpose</i>	This panel allows you to: Create and Maintain report groups.

Examples

This section illustrates examples concerning:

[Example 1: To Add R/W Parameter File Details](#)

[Example 2: To Change R/W Parameter File Details](#)

[Example 3: To Copy R/W Parameter File details](#)

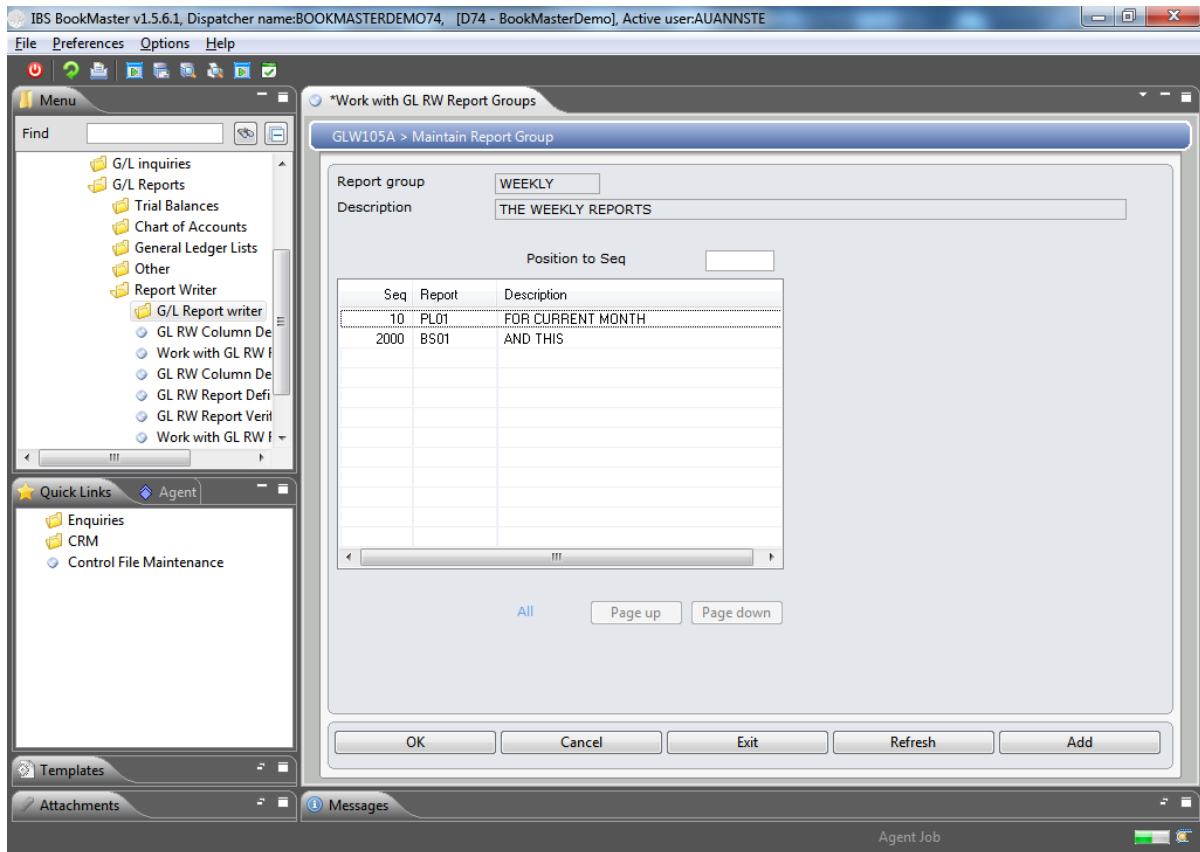
[Example 4: To Delete R/W Parameter File Details](#)

[Example 5: To Display Parameter File Details](#)

Example 1: Add R/W Parameter File Details

This example describes how to add new report writer parameter file for selected report group.

1. Select menu **Report Writer** from menu **General Ledger>GL Reports>Report Writer**. Select menu option **Work with GL RW Report groups**. Following panel is displayed.



Functions

[Add](#)

This function is to create new report writer parameter file for selected report group.

Options

[Change](#)

This option is used to maintain report writer parameter file details for the selected report group.

[Copy](#)

This option is used to create new report writer parameter file details with similar attributes as that of selected parameter file.

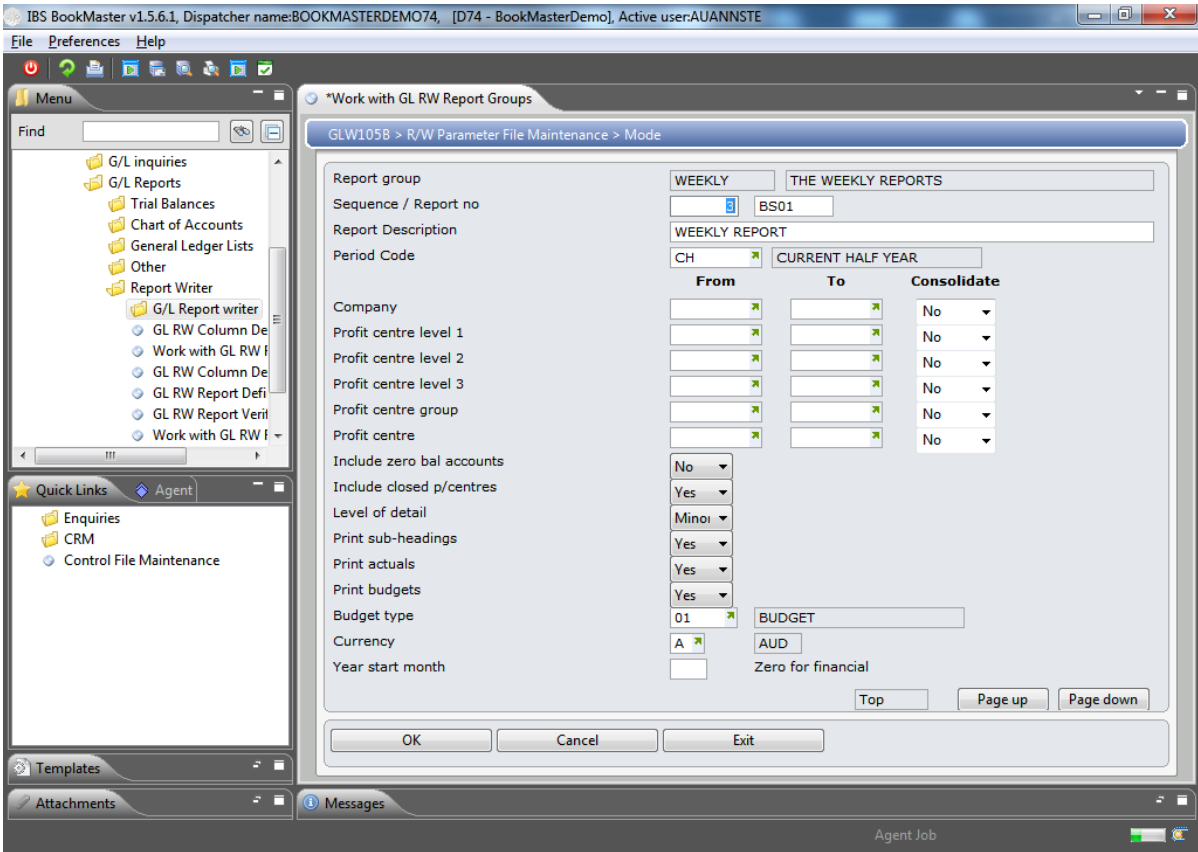
[Delete](#)

This option is used to remove selected report group's report writer parameter file from the system.

[Display](#)

This option is used to view particular report group's report writer parameter file details.

3. Click function **Add** to add new report writer parameter file details. Following panel is displayed.



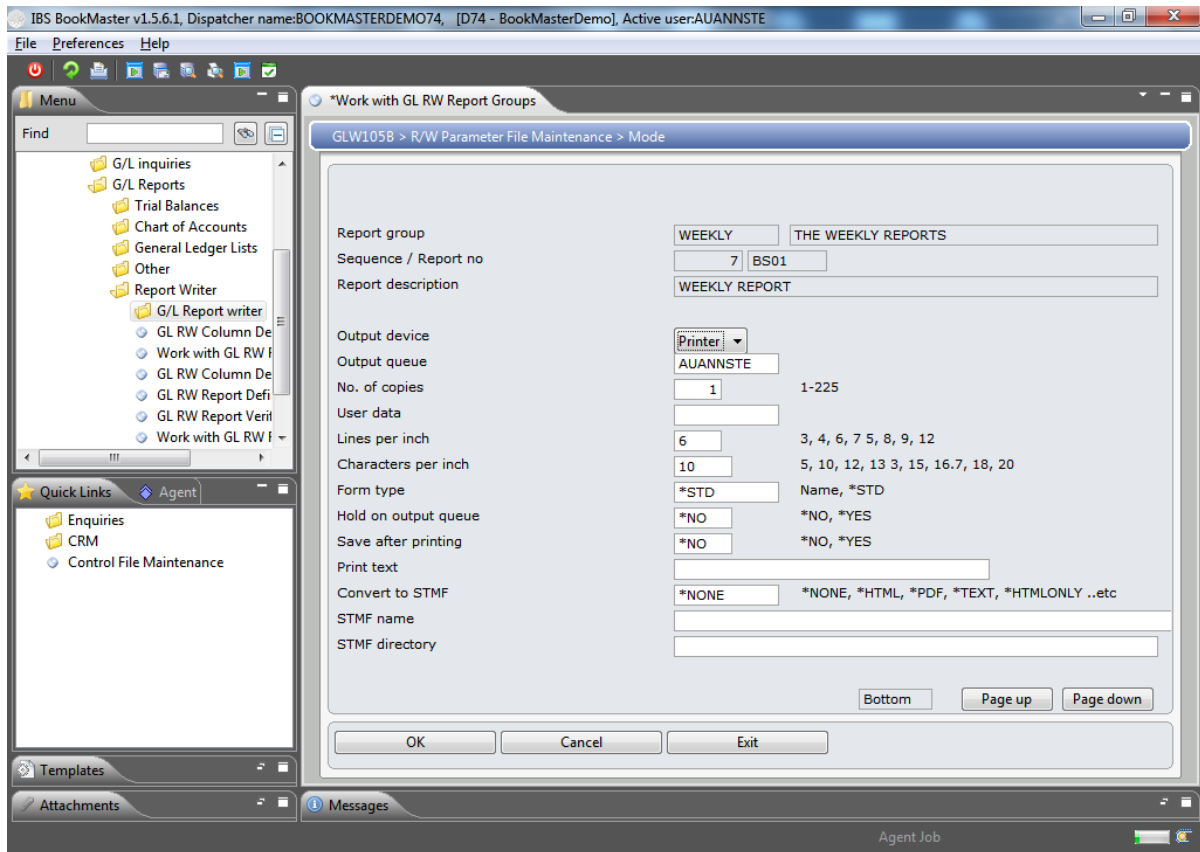
Relevant Fields

Report group

This is name of the report group. It must be unique in the system.

Key in all required fields

Page Down

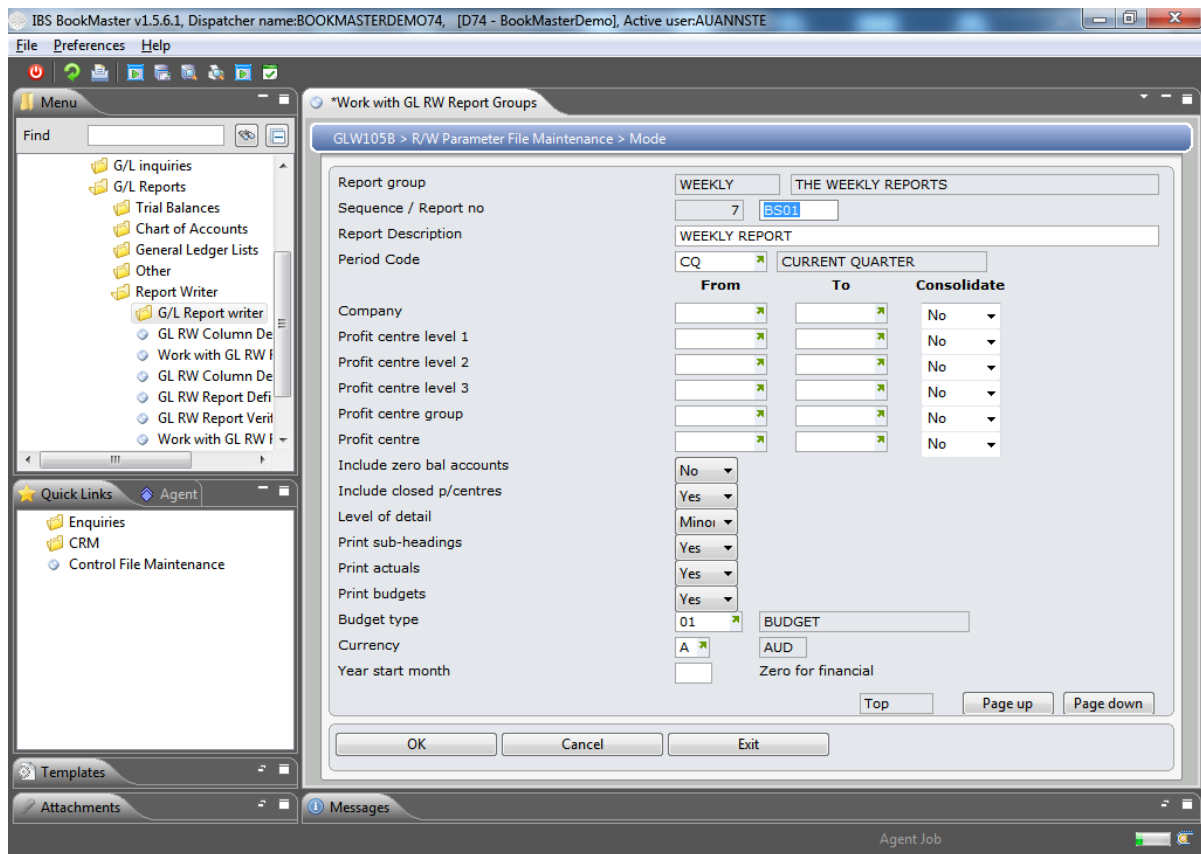


4. Key in all required fields and click **OK** to confirm the entries. New report writer parameter file has been added.

Example 2: To Change R/W Parameter File Details

This example describes how to change details of particular report writer parameter file.

1. Repeat steps 1 and 2 from [Example 1: To Add R/W Parameter File Details](#). Select report writer parameter file which is to be maintained and click option **Change**. Following panel is displayed.

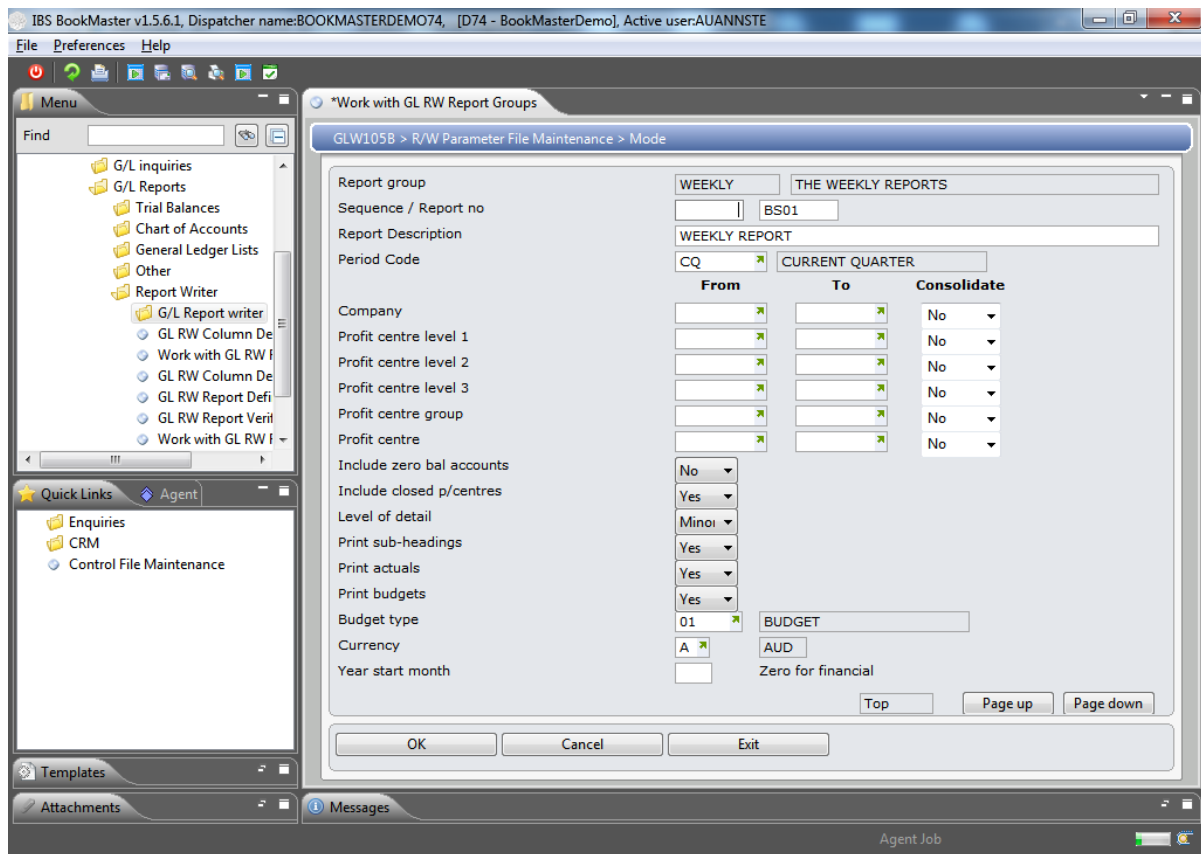


2. Make the necessary changes to the parameter files and click **OK** to confirm the changes. Report writer parameter file is updated.

Example 3: To Copy R/W Parameter File details

This example describes how to copy report writer parameter file details to the new definition of parameter file.

1. Repeat steps 1 and 2 from [Example 1: To Add R/W Parameter File Details](#). Select report writer parameter file for which definition details are to be copied as definition. Click option **Copy**. Following panel is displayed.

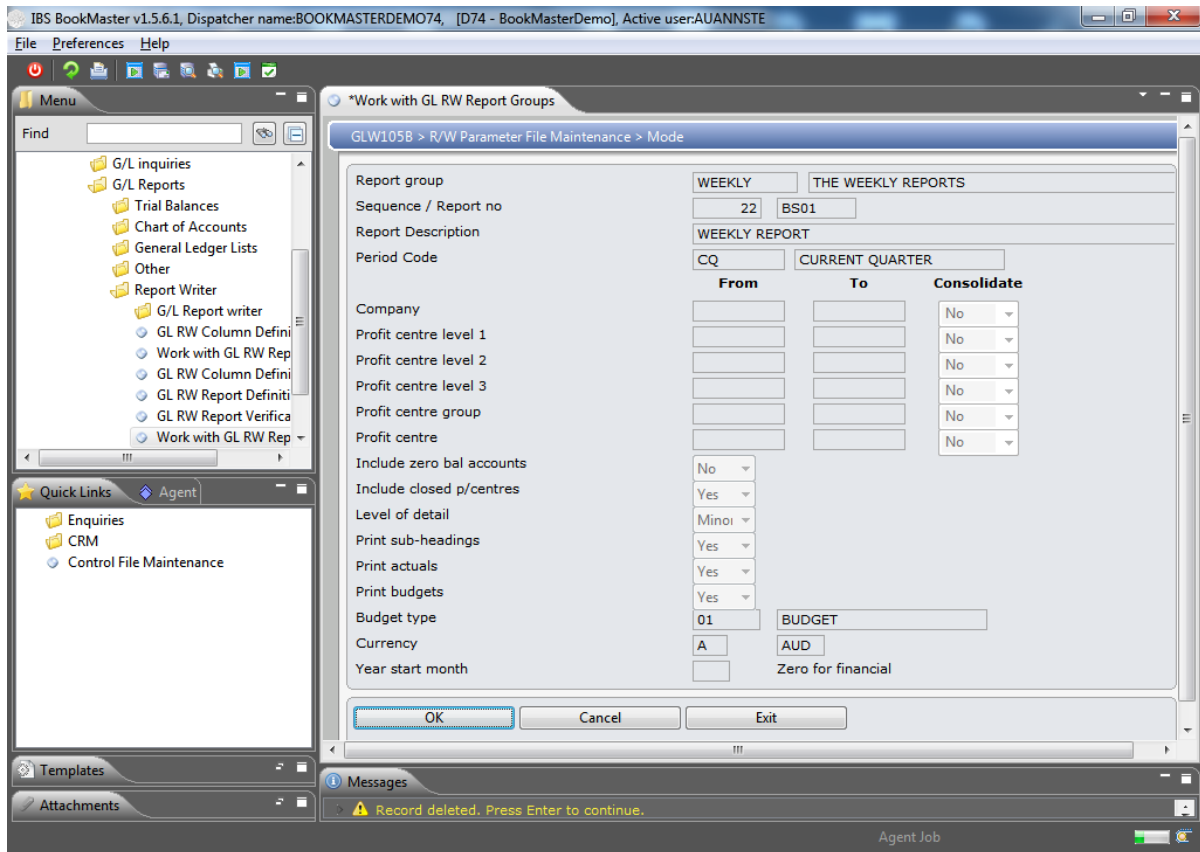


2. Make the necessary changes to the definition details and click **OK** to confirm. New definition of parameter file is created.

Example 4: To Delete R/W Parameter File Details

This example describes how to delete particular report writer parameter file.

1. Repeat steps 1 and 2 from [Example 1: To Add R/W Parameter File Details](#). Select report writer parameter file which is to be deleted. Click option **Delete**. Following panel is displayed.

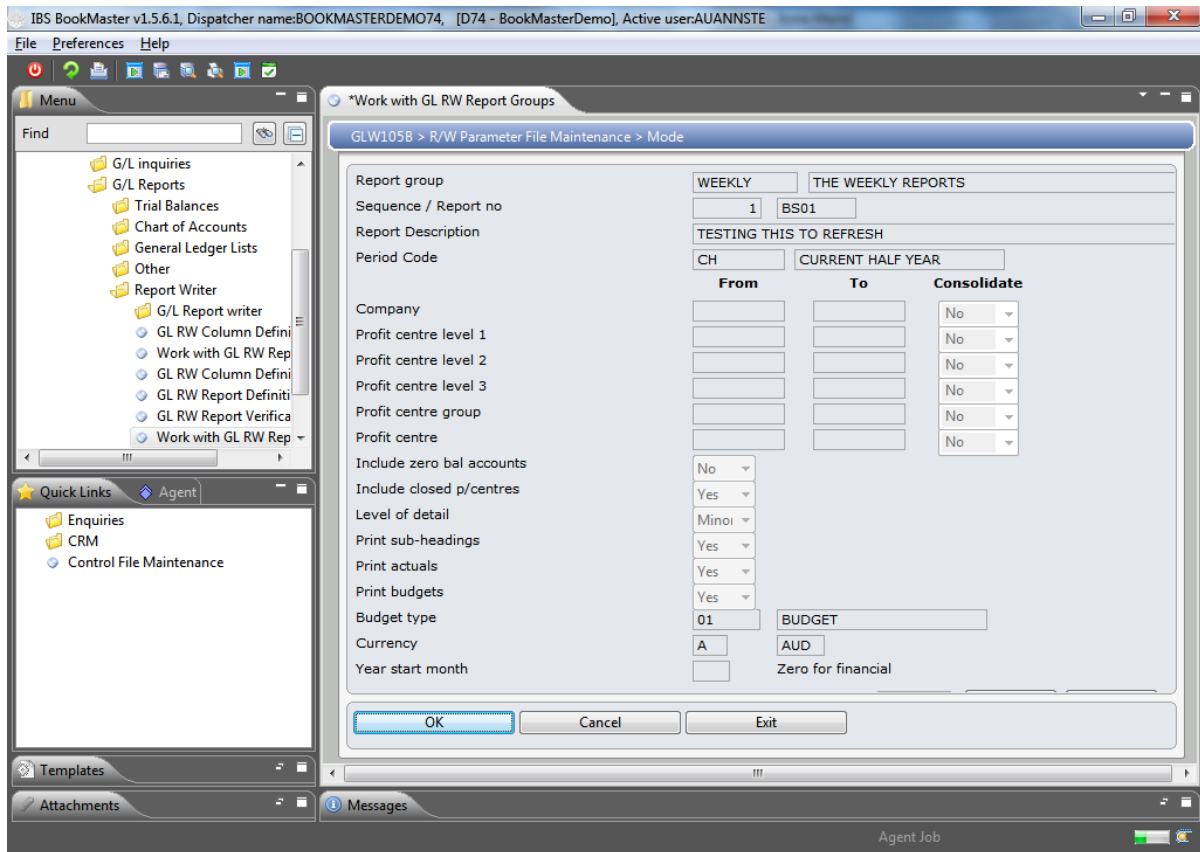


2. Click **OK** or press **F15** to confirm the deletion. Selected report writer parameter file is deleted.

Example 5: To Display Parameter File Details

This example describes how to view details of particular report writer parameter file.

1. Repeat steps 1 and 2 from [Example 1: To Add R/W Parameter File Details](#). Select report write parameter file for which details are to be displayed. Click option **Display**. Following panel is displayed.



Report writer parameter file details are displayed.

Related Tasks

Control Files Required

Following control files are applicable to **GLW105 Maintain Report Group**. Please refer to menu Control File Maintenance in Cross Applications module for more details.

Application	Key	Description
*****	EXC-DSC	Foreign currency exchange codes
*****	PAGE	Page scrolling keywords
*****	RPT-SPLD	Default directory and filename for spool file
TMSG	BTYP	Budget types
TMSG	BTYP-DFT	Default budget type
TMSG	RW-PDCD	Report writer period codes

Cross Reference

- GLW100 Work with report groups