
GLO300 Indirect Expenses Allocation

<i>Overview</i>	This program is run to distribute an indirect expense from one profit centre to one or several other profit centres, based on user defined allocation expenses. A reversing journal will be created against the original G/L account, and allocation journals are generated for various profit centres. This entry will always be created, distributing current balance of an account to its various profit centres.
<i>Purpose</i>	<p>This panel allows you to:</p> <p>Distribute indirect expense from one profit centre to one or several other profit centres.</p>

Follow up

Printouts

There are printout programs available with this routine. An audit report is generated showing any errors. All errors must be corrected before proceeding with the next step.

There are two types of errors: Either the general ledger account has not been activated against the selected profit centre or the Journal Type has not been defined in the Number Range File.

Final message of "*** Error (s) occur, indirect expense allocations not generated **" for errors.

Final message of "*** No error, indirect expense allocations generated """" for no error.

2 types of reports are generated.

1. Error report
2. Audit report

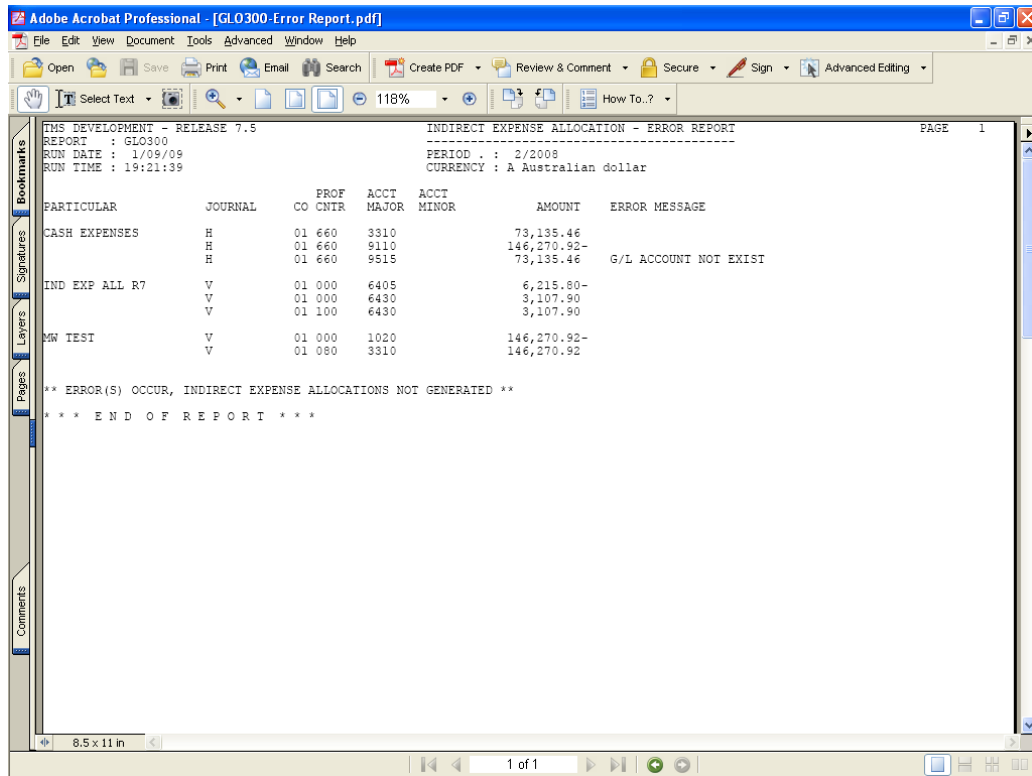
Selection of the following is required:

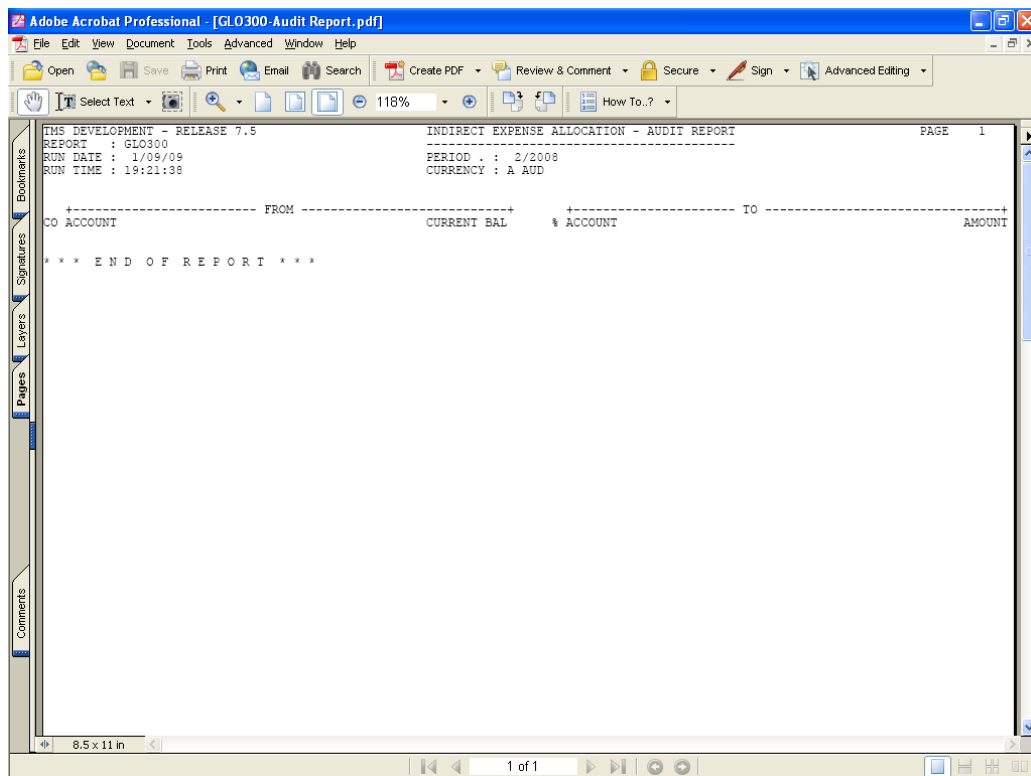
- Period
- Currency
- Sequence
- Level

Reports display the following information:

- Period
- Currency
- Particulars
- Journal

- Company
- Profit centre
- Major account
- Minor account
- Amount
- Error message per line





Examples

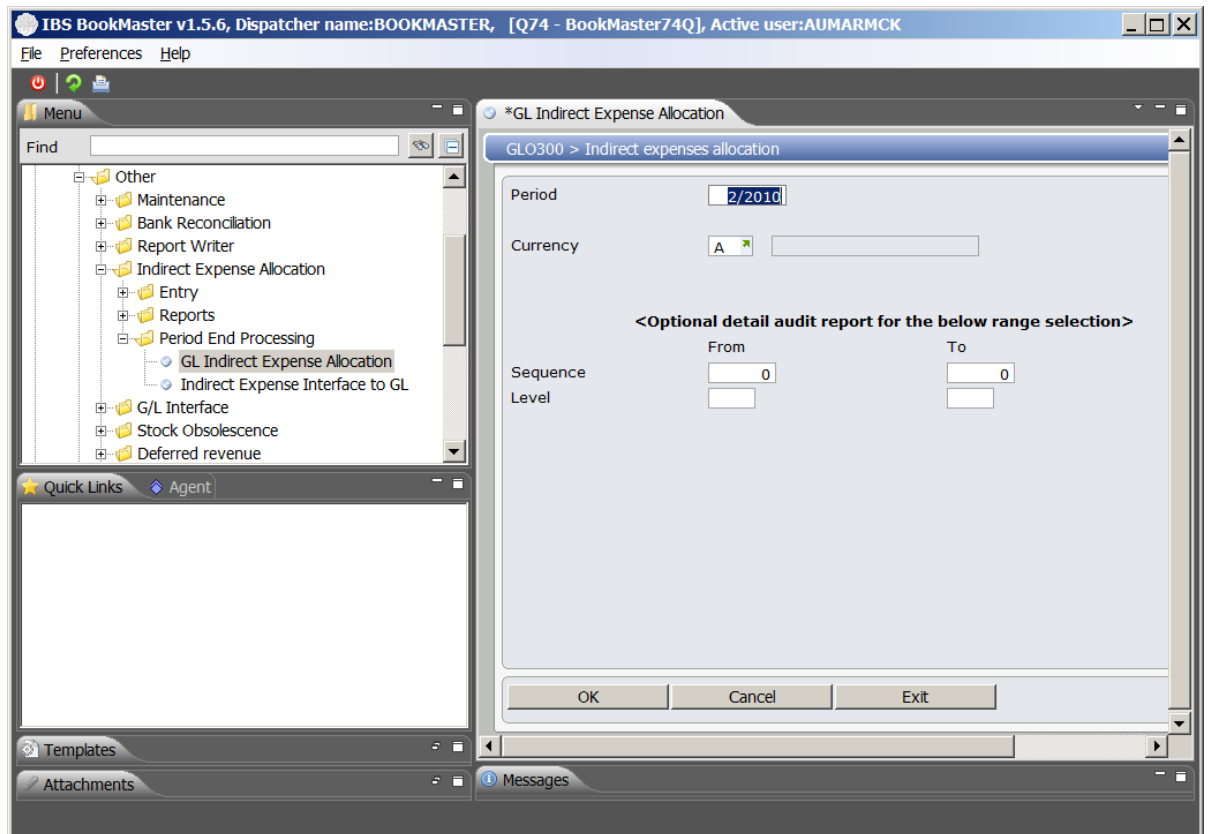
This section illustrates examples concerning:

[Example 1: To Distribute Indirect Expenses](#)

Example 1: To Distribute Indirect Expenses

This example describes how to distribute indirect expenses from one profit centre to one or more other profit centres.

1. Select menu **GL Indirect Expense Allocation** from Base Modules>General Ledger>Other>Indirect Expense Allocation>Period End Processing menu. Following panel is displayed.



2. Key in all required fields and click **OK** to confirm the selection. Job processing panel is displayed.
3. Change the job queue if required and select to run the process in batch or real time.
4. Click **OK** to confirm the selection. Indirect expenses are allocated from one profit centres to one or several other profit centres. 2 reports, one displaying errors and other displaying audit trail are generated. The next step is run when End of Day process is run. This is to update interface files into the General Ledger files.

Cross Reference

- GLM150 – Indirect Expense Allocation Maintenance